



Official



Program

THE BOARDWALK BOWL

NCAA Atlantic Coast Region Football Championship

INDIANA, PA., UNIVERSITY vs. UNIVERSITY OF DELAWARE

The Nation's First NCAA Football Title Game Indoors

ATLANTIC CITY, N. J.

SATURDAY, DEC. 14, 1968



*Welcome to the World-Famous
Atlantic City Convention Hall
and the World's
Largest Auditorium . . .*

It took four years of building to open the Atlantic City Convention Hall on Memorial Day, 1929, and it took \$5 million and two years more to modernize it in the early Sixties, so that today it has ultra modern lighting, is fully air-conditioned, and has additional facilities such as escalators and an under-the-Boardwalk tunnel vehicle entrance.

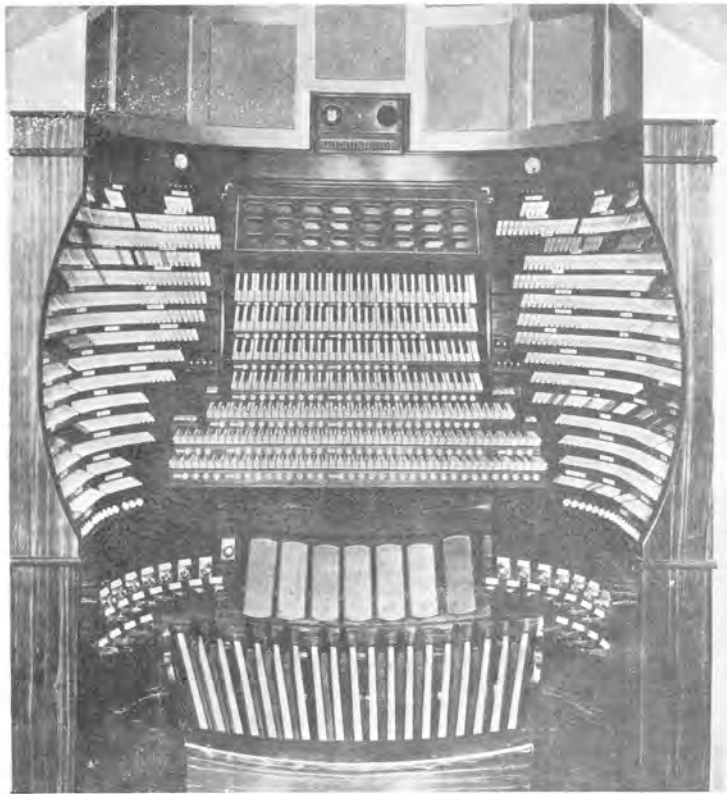
A 13-story building could be set upon the floor of the main auditorium without touching the roof. It occupies four city blocks on some seven acres of sand and its interior space amounts to more than 9,500,000 cubic feet.

The Main Hall, site of the 1968 Boardwalk Bowl game, is 488 feet long, 288 feet wide, 137 feet high at its curved roof peak and has no pillars — making it the largest room of its kind in the world.

The 350,000 square feet of exhibit space on the main floor has service centers throughout with gas, water, sewerage, electricity, steam and compressed air. The main hall is set up for football now, but in January will be completely converted into a capacity display of china and glassware.

The main auditorium also houses the world's largest pipe organ with seven manuals. There are 1225 speaking stops and 33,000 pipes ranging from three-sixteenths of an inch to 64' in length. The wiring used would girdle the earth twice.

Ground will be broken next month for an addition to the present building, an architect's drawing of which appears below. It will occupy all but 3,000 square feet of another four block area adjacent to the present Hall and will be connected directly with it. The new addition will add an additional 200,000 square feet of space, plus storage facilities and be ready for use by September, 1970.



BOARDWALK BOWL HIGHLIGHTS 39 YEARS OF SPORTS EVENTS IN AUDITORIUM . . .

No one would ever believe it possible at the time, but on October 25, 1930, Lafayette played Washington and Jefferson INDOORS in a regular-season football game. That same Fall, Miami played Temple on November 8th.

To go even further from the traditional, the nation's first indoor soccer game was also played in 1930 when the University of Pennsylvania faced the Chalfonte soccer team.

Since then practically every sport with the exception of swimming and baseball has been played in the Big Hall, and even baseball had its day when the New York Yankees trained here during World War II and were allowed by the U. S. Air Force (which occupied the Hall at the time) to work out in inclement weather.

There have been two world championship fights, intercollegiate and scholastic basketball games, ice hockey, box lacrosse, six-day bicycle races, National AAU Jr. Women's track and field championships, National fencing championships, wrestling, pro and amateur tennis, softball, dog races, midget auto races and the American Bowling Congress.

Today's Boardwalk Bowl game will be followed on Sunday the 15th, with the first annual Holiday Indoor Soccer Festival with five games featuring midget, junior and high school championship teams, climaxed with a sixth game between two collegiate clubs — the Delaware Valley All Stars and the Pennsylvania United Soccer League All Stars.

The first annual Boardwalk Bowl was made possible through the combined efforts of the City and A. C. Special Events, when City Commissioner William Somers and Special Events prexy Michael Fiore headed a delegation that went to New Orleans to appear before the NCAA site committee and present a formal invitation to stage the 1968 Atlantic Coast Region NCAA football championships in Atlantic City.

On hand at the meeting was a delegation from Orlando, Florida, who had sponsored the NCAA regional championship since it was inaugurated by the NCAA in 1964, when the country was divided into four sections, with regional titles in various sports being held in each.

Orlando had been staging bowl games since 1946 under the sponsorship of the local Elks Club, calling it the Tangerine Bowl with all net proceeds going to charity. In 1964 the Tangerine Bowl was the site of the first Atlantic Coast Regional Conference Championship game, and was awarded the title game for the next three years. Losing out to Atlantic City this year in their bid for the NCAA game, they are still staging the Tangerine

Bowl, but have reverted back to their pre-1964 status by inviting two outstanding teams from various parts of the country.

Over the first four years, the competing teams by years were: the University of Massachusetts and East Carolina with East Carolina winning 14-13. The 1965 game saw East Carolina again against the University of Maine whom they whitewashed 31-0. It was Morgan State over West Chester State 14-6 in 1966 and last year saw Tennessee U. of Martin beating West Chester by a 25-8 score.

In all there will be four regional championship games played today — the Boardwalk Bowl here in Atlantic City, the Grantland Rice in Tennessee, the Pecan Bowl in Texas and the Camelia Bowl in California representing the title games in the Atlantic Coast, Mideast, Midwest and Pacific Coast regions respectively.

Other than sports, the Atlantic City Auditorium and Convention Hall has been the site of the Miss America Pageant since 1946, the National Democratic Convention in 1964, and more major conventions and trade shows than any other building or city in the country.

It is interesting to note that Indiana U. was scheduled to play a game indoors in the Auditorium back in 1963 against Montclair State College of New Jersey. However, it was

(Continued on Page 19)

BOARDWALK BOWL PROGRAM

Back Cover by:

TOM "PAP" PAPROCKI

Compiled and Edited by:

MALL DODSON

In Conjunction with:

AL SHRIER, Temple University

LARRY A. JUDGE, Assistant Director
Public Relations, Indiana University

JOHN M. MORRIS, Delaware University

DAVID M. NELSON, Athletic Director
University of Delaware

R. B. "SCOTTY" DUNCAN
Assistant Athletic Director
University of Delaware

CHARLES L. KLAUSING, Athletic Director
and Head Football Coach of
Indiana University of Pennsylvania

HERE'S HOW CONVENTION HALL LOOKS WHEN IT IS TRANSFORMED INTO A FOOTBALL STADIUM



PHOTO SHOWS THIS FALL'S PMC - U. S. COAST GUARD ACADEMY IN THE "LITTLE ARMY - NAVY" GAME

How Bowl Game Teams Are Selected By NCAA

Selection of teams for the College Football Championships are made by the NCAA College Football Committee, assisted by four regional selection committees who serve in an advisory capacity.

The committee uses three criteria to select the two teams in each of the four regions that include won and lost record, strength of schedule, eligibility of student-athletes for NCAA College Division Regional Championship Football competition.

Ernest C. Casale, Director of Athletics of Temple University, is chairman of the



ERNEIE CASALE
Director of Athletics, Temple University



RICHARD S. JACKSON
MAYOR

CITY OF ATLANTIC CITY
NEW JERSEY 08401
EXECUTIVE DEPARTMENT



CITY COMMISSION
MEREDITH B. KERSTETTER
KARLOS R. LA SANE
ARTHUR W. PONZIO
WILLIAM T. SOMERS

GREETINGS TO ALL OUR GUESTS:

I am sure you will be thrilled by a most excellent contest today in this the first Atlantic City NCAA Boardwalk Bowl, as well as by the members of the two bands from Indiana University of Pennsylvania and the University of Delaware in the pre-game and half-time pageantry.

The Boardwalk Bowl game this year is the first of what we all hope will become a traditional championship event in Atlantic City. I welcome and commend those whose work has made the game possible, and those who will participate in the game itself, as well as the citizens of our own City and the officials and students of the two competing schools.

To the players: Good Luck!
To the Bands and Queens: Thank you!
To the Fans: See you at the kick-off!

A handwritten signature in cursive script that reads "Richard S. Jackson".

Richard S. Jackson
MAYOR

Atlantic Coast region. Other members are Harry Arlanson of Tufts College, George Hansell of PMC College, William T. Jones of the Central Intercollegiate Athletic Assn., Thomas McDonough of Emery U., William McHenry of Lebanon Valley College and Joseph Scannella of C. W. Post College.

Today there are four other Bowl games being played across the country. These are: The Grant Rice Bowl in Murfreesboro, Tenn.; Pecan Bowl in Arlington, Texas; and the Camelia Bowl in Sacramento, California.

Host for the Atlantic Coast Regional Championship is Temple University in Philadelphia; Middle Tenn. State U., the Mid-east region; University of Texas, the Mid-west Region, and Sacramento State College, the Pacific Coast Region.



The NCAA – Athletic Voice of the Nation's Colleges and Universities

Sports fans in America are most likely to become acquainted with the National Collegiate Athletic Association in the fall while watching a college football game on television. Yet, while its Television Committee is an important group within the Association, it is just one of 37 NCAA committees and the televising of grid contests is a comparatively small item in the myriad services the NCAA performs annually.

The NCAA also conducts 23 national championships in 13 sports each year. It undertakes the monumental task of keeping each of its 692 colleges, universities, conferences and affiliated associations informed of changes in the Association's legislation and of the rules governing competitions in 12 different sports. Formation of legislation and rules is another demanding and completely different area of activity.

The NCAA evolved from a meeting of 13 institutions called in early December, 1905, to bring about reforms in football playing rules. At a second meeting December 28 in New York, the Intercollegiate Athletic Association was founded. It was officially constituted on March 31, 1906, and took its present name in 1910.

A discussion group initially, the Association undertook one of its most vital functions shortly after World War II when the membership voted itself legislative and executive powers. Since that time, the NCAA has become an important and vital force in the conduct and administration of intercollegiate athletics. It has progressed from pondering primarily over playing rules to considering and acting upon any athletic problem which has spread across regional lines and become national in character.

Another of the items inclined to bring the NCAA before the public, the enforcement program is a cooperative undertaking by the member institutions and allied conferences designed to assure compliance with the legislation they adopt. The effort is founded on the proposition that institutions of higher learning, holding membership in the NCAA, are obligated to observe the rules and regulations to which they subscribe.

In other areas, as well as enforcement, the NCAA is simply the nation's colleges and universities, themselves, speaking of and acting on athletic matters at the national level.

Hence the statement that the NCAA is the athletic voice of the nation's colleges and universities.

The most thorough manner in which to examine the over-all NCAA program is to list the basic facets of the Association's activities. The NCAA:

- ... conducts 23 national championships in 13 sports. Two championship (College And University Division) are held in baseball, basketball, cross country, golf, gymnastics, swimming, tennis, track and field and wrestling. One meet is sponsored in fencing, ice hockey, indoor track, skiing and soccer. The National Collegiate Championship series dates back to 1883 and over this 86-year span, more than 60,000 student-athletes have competed in these events with 4,261 earning the coveted title, "National Collegiate Champion."

- ... maintains 12 rules committees to formulate, copyright and publish rules of play for the government of collegiate sports. Members of these committees are elected by representatives of member institutions at the NCAA's annual Convention in January.

- ... publishes annually "Official Guides" for nine sports through the College Athletics Publishing Service in Phoenix, Arizona.

- ... collects, compiles and distributes to the press and college officials the official statistics of college football, basketball, baseball and track. National Collegiate Sports Services of New York City performs these and other functions commonly associated with a record-keeping agency.

- ... maintains a national headquarters staff in Kansas City, Missouri, under the supervision of Executive Director Walter Byers.

- ... conducts studies as a means of developing solutions to athletic problems. Recent surveys have been made on television, postseason events, length and time of playing and practice seasons, participation and budgets for intercollegiate baseball, activities and facilities of member institutions, etc.

- ... participates in the U. S. Olympic and Pan American Games movements as the administrative agency for the colleges in fund raising, sports organization and the providing of coaches and athletes for the United States' teams.

- ... enacts legislation to deal with athletic problems when they spread across regional lines and member institutions concur that national action is needed.

- ... administers group insurance programs whereby member colleges can provide catastrophe medical coverage for student-athletes injured in practice, play or transport. More than 85,000 persons are enrolled annually in the athletic medical and travel accident programs.

- ... maintains a central clearing and counseling agency in the field of college athletic administration.

- ... provides financial and other assistance to various groups interested in the promotion and encouragement of intercollegiate and intramural athletics; actively assists the various national coaches associations in projects which provide better teaching, better competition and sounder administration.

- ... maintains a large film library, covering play in national meets and tournaments. This library of more than 300 titles includes films on baseball, basketball, boxing, gymnastics, ice hockey, swimming, track and field and wrestling.



MARCUS L. PLANT
University of Michigan
President, NCAA



WALTER BYERS
Executive Director, NCAA



ERNEST B. MCCOY
Pennsylvania State University
Secretary-Treasurer, NCAA



John Sutton Hall, the first and for a time the only building on campus, built in 1875 and now a women's dormitory, has come to be the symbol of Indiana. That part of the building pictured, the original structure, is soon to become an administration building.

GENERAL INFORMATION AND HISTORY

Indiana University of Pennsylvania, the only totally state-owned and state-controlled university in Pennsylvania, was founded as a normal school in 1875, became a state teachers college in 1927 and a state college in 1960. It was designated as the state university December 16, 1965, by Act 430 of the legislature and two days later was fully accredited as such by the Middle States Association.

The university is operated by a nine-man Board of Trustees appointed by the Governor of Pennsylvania, with the President of the university elected by the Board subject to approval of the Governor and charged with administration of the affairs of the university.

The annual budget of nearly \$13 million is provided from state allocation and student fees; the proposed budget for the current 1968-69 academic year calls for a state allocation of \$6.8 million.

Approximately 50 to 60 per cent of the total cost of operation has been provided by the Commonwealth of Pennsylvania up to the present time, although it is hoped that this will increase further as the university expands both in terms of enrollment and of program.

Indiana — the State University

CAMPUS AND BUILDINGS

The university campus is presently comprised of 185 acres of ground, well landscaped and dotted with more than 200 oak trees, and is regarded as one of the most beautiful campuses in Pennsylvania. There are 58 buildings on the campus along with the new athletic area development.

A total of approximately 25 campus buildings and dormitories have been added to the Indiana campus within the past decade, while nine more buildings involving a total cost of approximately \$15 million as well as several privately constructed dormitories to be maintained by the university should be completed by 1970.

THE STUDENTS

Of the nearly 7500 undergraduate students now enrolled at the university, nearly 75 per cent of them come from the top fifth of their high school classes and virtually all others from the second fifth. With increasing enrollments, Indiana has at the same time seen a corresponding increase in quality of students.

For the most part, students of the university come from working class and middle income homes whose families represent a cross section of social and cultural life.

Indiana has always prided itself in being able to make available to these students a quality education at a reasonable cost; the great majority of the students find it easily possible to finance the total costs of their education at just a little more than \$1250 per year.

THE ACADEMIC PROGRAM

Organized into seven different undergraduate schools offering preparation in more than 40 academic areas, Indiana University of Pennsylvania offers bachelor of arts, bachelor of science and bachelor of fine arts degrees in a variety of fields.

The seven schools are the School of Education, School of Arts and Sciences, School of Business, School of Fine Arts, School of Home Economics, School of Health Services and School of Continuing and Nonresident Education. These schools are organized into 34 specialized departments.

Among newer academic offerings are those offered by the newly created departments of Geo-Science and Allied Health Professions, the latter stressing medical technology, as well as a four year baccalaureate program in nursing sponsored in cooperation with Latrobe Hospital, distributive education and computer-related majors in both mathematics and business.

In addition, the university now sponsors several pre-professional training programs in cooperation with other institutions of higher learning or with more specialized post-graduate schools, and several more such programs are planned. There is also a trend toward increasing interdisciplinary study.

In 1957 the then Indiana State Teachers College was authorized to give graduate study courses leading to a master of education degree as the first of the 14 state teachers colleges in Pennsylvania to offer work on the graduate level.

Graduate degrees are now offered by the Graduate School in elementary education as well as 17 specialized areas of elementary and secondary education. Masters of arts programs in geography, English, counseling services and history are offered; master of science degrees are offered in geography, mathematics, physics, chemistry and biology.

Indiana's first doctoral level offerings are being initiated this year, with an initial program leading to a doctorate of education in elementary education, and next September, with a program leading to a doctorate of philosophy in English.

With its elevation to the status of a university in 1965, Indiana University of Pennsylvania has maintained its traditionally excellent reputation for the training of teachers while at the same time introducing new academic programs for the training of members of a great many more professions.

Coach Chuck Klausing Completes Fifth Year at Indiana University In Atlantic City Boardwalk Bowl

With today's game against the University of Delaware, Charles L. "Chuck" Klausing, completes his fifth year as head coach and athletic director at Indiana University of Pennsylvania. Until today's game, he has directed the Big Indians to 39 victories against eight defeats.

Before coming to Indiana, Klausing had most recently been an assistant football coach at the U. S. Military Academy at West Point under Paul Dietzel and prior to that freshman coach at Rutgers University on the staff of John Bateman.

But he is no doubt best remembered by football fans throughout Pennsylvania as the man who from 1954 to 1959 as head football coach at Braddock High School guided that school to six undefeated seasons and as many Class A WPIAL

championships, chalking up 55 consecutive victories over the years.

Klausing had graduated from Slippery Rock State College in 1948 after also attending Pennsylvania State University for two years 1943-45. Although weighing only 162, Klausing achieved All-East as a sophomore at Penn State in 1944, All-State his junior and senior years and the All-Time Slippery Rock team.

His first teaching assignment came at East Pittsburgh High School for one semester, after which he became head football coach at Pitcairn High School. Serving there from 1949 through 1953, Klausing posted an overall 30-7-1 mark before moving to Braddock.

During World War II he served for 33 months with the



U. S. Marine Corps. Then assigned to the V-12 program at Penn State, Klausing was commissioned a second lieutenant in 1945 and was appointed athletic officer at the Marine Barracks in Norfolk.

Over the course of the years, Klausing has received many richly deserved honors. During the period 1954-59, he received the Pittsburgh Curbstone Coaches Scholastic Coach of the Year Award annually; in both 1955 and 1959 he was given the Dapper Dan Club Award for Outstanding Achievement in Sports.

A native of Wilmerding, where his father, Charles, has been mayor for six terms and his uncle, Martin, a 26 year veteran of the school board and president of council, Klausing is married to the former Joan Wit of nearby Swissvale. They have five children — Patricia Ann, 18; Mary Lou, 16; Thomas, 15; Nancy Jane, 12; and Kathleen Ann, ten.



Sharon Leslie Cowan, Queen Evergreen V

Sharon, age 19, lives at RD No. 2, New Florence, Pa., and is a sophomore, majoring in English Education, at the Indiana University of Pennsylvania. Daughter of Mr. and Mrs. Raymond Cowan, Sharon was crowned May 25, 1968, at the Christmas Tree Festival's Coronation Ball, which was sponsored by the Indiana County Tourist Promotion Agency.

Indiana, in addition to being the home city of the University, is also famed for its claim of being the Christmas Tree Capital of America, producing millions of trees annually.

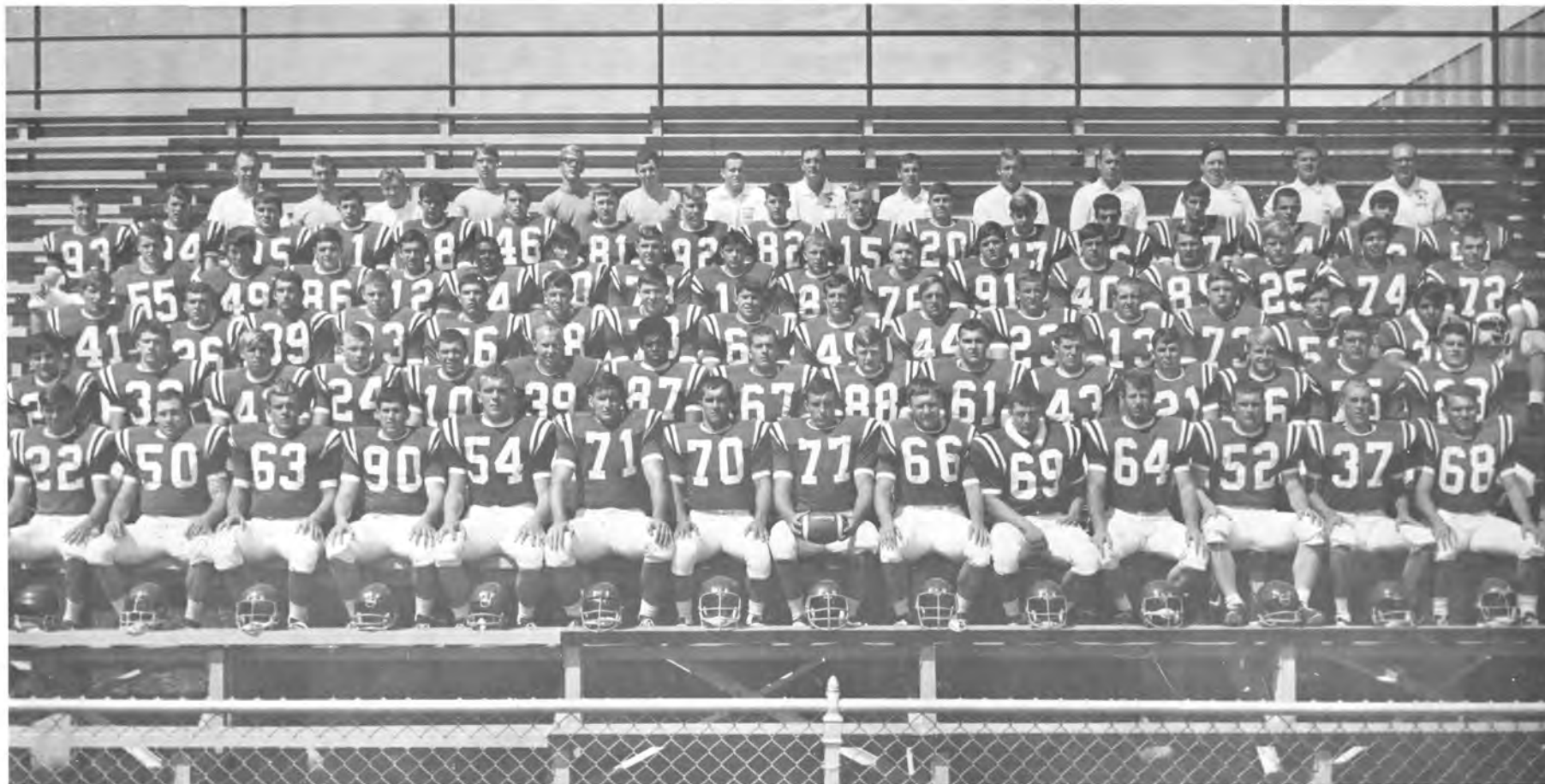
Sharon will grace the Auditorium gridiron in the Boardwalk Bowl game when she presents a live Christmas tree to the Delaware team.



THE FAMOUS INDIANA, PENNSYLVANIA UNIVERSITY BAND

Dan DiCicco, Director of University Bands for Indiana of Pennsylvania University, has arranged a special program of four different popular tunes for the half-time entertainment. Included in the half-time program will be "What Now, My Love?", rapidly becoming a standard if not already; "Cabaret" from the Broadway show of the same name; "This Guy's In Love With You," first made popular by Herb Alpert as a vocalist; and "Mission: Impossible," theme song of the popular TV show. During the football season DiCicco and Gary Olmstead, associate director of bands, have presented a variety of programs — each different for each game. DiCicco likes to think of his marching band as a show band rather than military, emphasizing the import-

ance of good music as good entertainment. New drum major this year is Gary Johnson of Allison Park, Pa., a junior majoring in music. Featured twirler is again Larry Kuntz, of Punxsutawney, Pa., and Charles A. Dabis of the university's music faculty acts as music arranger. They appeared in 1967 on national TV when they played for the half-time show of the Colt-Green Bay Packers game in Baltimore. Complete sponsorship of the band is provided by the Student Cooperative Association in terms of uniforms, music, meals and transportation. A complete set of uniforms alone costs \$15,000, with the complete set of band instruments valued at an estimated \$150,000.



1968 INDIANA UNIVERSITY OF PENNSYLVANIA VARSITY FOOTBALL TEAM

First Row, (left to right): Jerry Clark, Joel Heimlich, Gene Pawlowski, Dave Buzzelli, George Stair, Harry Harvey, Bob Tate, John Henry, Al Dellavechio, Mike Nixon, Bob Strouse, Stan Gutshall and Dale Hall.

Second Row: Greg Persichetti, Mike Priest, Barry Ruffner, Wally Blucas, Dick Draganac, Chuck Frederick, Dave Smith, Tony Ferrari, Jim Dotson, Walt Poleski, Jim Scahill, Don Rinchuse, Paul Noonan, Chuck Kelley and Paul Grice.

Third Row: John Dobies, Steve Moley, Skip Rosso, Jim Stepling, Sam Patti, Harry Kaufman, Joe Kovalchick, Bob LaCivita, Bob Murphy, Dan Ferguson, Dan Cox, Monroe Smith, Neil Gordon, John Wilcox and Tom McCracken.

Fourth Row: James Vogt, George Stark, Jack Neptune, Carmine Cortazzo, Tom Pipkins, Dave Weber, Andy Brill, John Brochetti, Robert Cosgrove, Steve

Cernak, Bob Pastine, Jack Yanni, Augie Hoffman, Dave Smith, Al Deep and Paul Gelacek.

Fifth Row: Bob Lasser, Ted Oleson, John Paul, Robert Barto, Mike Finnerty, Donald Corey, Bill Rapuk, Jim Kantner, Robert Gerhart, John Ziegler, Robert Basehore, Charles Hasse, John Butera, Michael Barry, Dave McGarvey, Dave Charley and Joe Volpe.

Sixth Row: Head coach Chuck Klausing, student trainer Tim Kerin, student trainer Jim Patalsky, student trainer Bob Cochran, manager John Bean, manager Terry Getner, team trainer Dave Lueking, offensive coordinator William McDonald, assistant freshman coach Bill Mitchell, quarterback coach Mickey Watson, defensive end and linebacker coach Fred Chase, defensive coordinator Owen Dougherty, defensive interior line coach Ed Receski and head freshman coach Dr. Chuck Godlasky.

1968 INDIANA SQUAD ROSTER

No.	Player	Class	Pos.	Ht.	Wt.	Age	High School/Hometown
47	Michael Barry	So.	SE	6-0	170	19	Freeport/Freeport
11	Robert Barto	So.	K	5-7	150	19	Penns Manor/Clymer
20	Robert Basehore	So.	DB	6-0	190	19	Butler/Butler
24	**Wally Blucas	Jr.	QB	6-1	205	20	Jenners-Boswell/Boswell
19	John Brochetti	So.	SE	5-9	170	19	Shannock Valley/Yatesboro
36	John Butera	So.	FB	5-10	185	19	Elk County Christian/Johnsonburg
90	Dave Buzzelli	Sr.	TE	5-10	200	21	Blairsville/Blairsville
76	Steve Cernak	So.	G	5-8	175	18	United/Seward
62	Dave Charley	So.	LB	6-10	180	19	Ford City/Ford City
22	**Jarry Clark	Sr.	CB	5-11	170	21	Punxsutawney/Punxsutawney
12	Carmine Cortazzo	Jr.	QB	5-8	165	20	Hempfield Area/Darragh
60	Robert Cosgrove	So.	G	5-7	185	19	Shannock Valley/Yatesboro
23	**Dan Cox	Jr.	HB	5-10	185	20	Latrobe/Latrobe
74	Al Deep	So.	T	6-3	240	19	New Castle/New Castle
69	**Al Dellavechia	Sr.	MG	5-9	195	21	Latrobe/Latrobe
57	John Dobies	So.	C	6-2	215	19	S. Allegheny/McKeesport
88	**Jim Dotson	Sr.	DE	6-0	186	21	Hopewell/Aliquippa
10	**Dick Draganac	Sr.	SE	5-7	180	21	Monaca/Monaca
44	Dan Ferguson	Jr.	DHB	5-8	180	19	Wilkinsburg/Wilkinsburg
67	**Tony Ferrari	Jr.	DT	5-11	220	21	Hempfield Area/Youngwood
48	Mike Finnerty	So.	DE	6-3	200	18	Chartiers Valley/Carnegie
72	Paul Gelacek	So.	DT	6-2	210	19	Kittanning/Kittanning
82	Robert Gerhart	So.	TE	6-0	180	19	Bishop Guilfoyle/Altoona
73	Neil Gordon	Jr.	T	6-0	220	20	Gen. Catholic/Pittsburgh
29	Paul Grice	So.	SE	5-10	170	18	Moon/Moon
37	**Stan Gutshall	Sr.	CB	5-11	175	21	N. Catholic/Pittsburgh
68	**Dale Hall	Sr.	G	5-10	190	21	Westinghouse Memorial/N. Versailles
17	Charles Hasse	So.	CB	5-8	168	19	Bishop McCort/Johnstown
50	**Joel Heimlich	Sr.	DE	5-10	190	21	Serra Catholic/McKeesport
66	*John Henry	Sr.	G	5-11	205	22	Chartiers-Houston/Houston
28	Harry Kaufman	So.	DHB	5-11	180	19	West Mifflin South/West Mifflin
75	Chuck Kelley	Sr.	T	6-0	210	21	Albert Gallatin/Point Marion
78	*Joe Kovalchick	Jr.	T	6-0	220	19	Shannock Valley/Sagamore
65	Bob La Civita	So.	G	5-9	185	18	Serra Catholic/East McKeesport
58	Bob Lasser	So.	G	5-10	190	19	Churchill Area/East Pittsburgh
26	Steve Moley	So.	SE	5-9	160	18	Red Lion/Red Lion
30	Tom McCracken	Jr.	FB	5-10	190	20	Central Catholic/Pittsburgh
34	Dave McGarvey	So.	K	5-10	185	20	Kittanning/Kittanning
45	*Bob Murphy	Jr.	CB	5-9	175	19	Greensburg-Salem/Greensburg
86	*Jack Neptune	Jr.	DE	5-10	195	20	Bishop McCort/Johnstown
64	*Mike Nixon	Sr.	LB	5-11	190	21	Homer-Center/Indiana
16	Paul Noonan	Sr.	DHB	5-9	170	21	Leechburg/Leechburg
81	Ted Oleson	So.	LB	6-0	190	19	Springdale/Springdale
79	Bob Pastine	Jr.	DT	6-0	220	20	Aliquippa/Aliquippa
56	*Sam Patti	Sr.	DE	5-10	190	21	Indiana Area/Indiana
95	John Paul	So.	T	5-10	190	19	Central Cambria/Ebensburg
63	**Gene Pawlowski	Sr.	G	5-10	210	21	West Mifflin North/West Mifflin
27	Greg Persichetti	So.	HB	5-10	175	20	Blairsville/Blairsville
14	Tom Pipkins	So.	QB	5-7	170	18	Clairton/Clairton
61	*Walt Poleski	Sr.	DT	6-0	215	21	Kiski Area/Vandergrift
33	Mike Priest	Jr.	CB	6-1	190	21	Churchill Area/Swissvale
77	**Bob Prokay	Sr.	T	6-1	220	21	West Mifflin North/West Mifflin
71	Bill Rapuk	So.	G	5-10	195	19	Sharon/Sharon
21	**Don Rinchuse	Sr.	TB	5-9	175	21	Greensburg-Salem/Greensburg
89	Skip Rosso	Jr.	TE	6-1	205	21	Langley/Pittsburgh
42	*Barry Ruffner	Jr.	DHB	6-1	195	20	Latrobe/Latrobe
43	Jim Scahill	Sr.	CB	6-1	185	21	Kittanning/Kittanning
87	Dave Smith	Sr.	FLB	6-2	205	21	Boys/New York, N. Y.
54	George Stair	Sr.	C	6-8	240	21	Bishop McDevitt/Harrisburg
85	George Stark	Jr.	TE	6-0	210	21	Westinghouse Memorial/E. McKeesport
83	Jim Steppling	So.	DE	6-1	195	19	Beaver/Beaver
52	*Bob Strouse	Sr.	C	6-0	198	20	Williamsport/Williamsport
70	**Bob Tate	Sr.	LB	5-8	190	21	Bishop Guilfoyle/Altoona
55	James Vogt	So.	C	6-4	190	18	Fort Le Boeuf/Waterford
51	Joe Volpe	So.	MG	5-10	200	20	Serra Catholic/McKeesport
38	Dave Weber	So.	LB	5-10	185	18	Brentwood/Brentwood
53	John Wilcox	So.	MG	5-10	205	19	Wellsboro/Wellsboro
40	*Jack Yanni	Jr.	DT	5-11	215	20	Springdale/Springdale
15	John Ziegler	So.	SE	6-0	180	19	Juniata/Mifflintown

** Number of Letters Earned

Indiana

INDIANA OFFENSE

(10) Dick DraganacLE
(77) Bob ProkayLT
(66) John HenryLG
(52) Bob StrouseC
(63) Gene PawlowskiRG
(78) Joe KovalchickRT
(85) George StarkRE
(24) Wally BlucasQB
(23) Dan CoxLH
(87) Dave SmithRH
(30) Tom McCrackenFB

INDIANA DEFENSE

(88) Jim DotsonLE
(61) Walt PoleskiLT
(69) Al DellavechioMG
(67) Tony FerrariRT
(50) Joel HeimlichRE
(70) Bob TateLB
(81) Ted OlesonLB
(22) Jerry ClarkCB
(37) Stan GutshallCB
(42) Barry RuffnerDHB
(17) Charles HasseDHB

INDIANA SQUAD

(1) Carmine CortazzoQB
(15) John ZieglerSE
(20) Robert BasehoreDB
(21) Don RinchuseTB
(33) Mike PriestCB
(36) John ButeraFB
(53) John WilcoxMG
(54) George StairC
(56) Sam PattiDE
(60) Robert CosgroveG
(74) Al DeepT
(75) Chuck KelleyT
(79) Bob PastineDT
(86) Jack NeptuneDE
(90) Dave BuzzelliTE
(28) Harry KaufmanAlt. DHB
(38) Dave WeberAlt. LB
(40) Jack YanniAlt. DT
(45) Bob MurphyAlt. CB

THE COACHES

CHARLES L. "Chuck" KLAUSING
(Penn State '56) Athletic
Director and Head Coach

OWEN DOUGHERTY (Penn State)

WILLIAM McDONALD (Cinn. U.)

ED RECESKI (Lycoming College)

MICKEY WATSON (Indiana '66)

FRED CHASE (Purdue)

THE BOARDWALK

ATLANTIC COAST REGIONAL NCAA

Presents

INDIANA UNIVERSITY OF PENNSYLVANIA

ATLANTIC CITY, NEW JERSEY



STATISTICS OF THE BOARDWALK BOWL

(A toss of the coin made Indiana the home team)

Records: Indiana (9-0)

INDIANA (9-0)

	Indiana	Opp.
Points Scored	360	82
First Downs	155	92
Yards Gained Rushing	2258	1067
Yards Lost Rushing	207	417
Net Rushing	2051	650
Times Carried	482	369
Passes Attempted	210	218
Passes Completed	100	102
Passes Intercepted	7	17
Passing Percentage	.48	.47
Yards Gained Passing	1552	1107
Fumbles	25	24
Fumbles Lost	13	19
Total Plays	751	653
Kickoff Returns	20	61
Kickoff Return Yards	366	1215
Punts	34	69
Punt Yardage	1225	2203
Punt Average Yards	36	31.9
Punts Returned By	43	8
Yards Punts Returned	337	15
Total Yards Gained	3603	1757
Yards Penalized	430	445

1968 SCHEDULE AND SCORES

Indiana	Opponent	Place
16- 0	Delaware State	Home
75-13	Northwood Inst.	Home
24-14	Shippensburg State	Away
19- 0	Edinboro State	Away
48-28	Brockport State	Home
18-13	Clarion State	Away
44-15	Slippery Rock State	Away
41- 0	California State	Home
35-13	C. W. Post	Away

BOARDWALK BOWL

RefereeEdward G. Myer (Temple)
UmpireJames J. Reilly, Jr. (Holy Cross)
Head LinesmanJames W. McGuckin (Dickinson)

WALK BOWL

CAA FOOTBALL CHAMPIONSHIP

...iana vs. DELAWARE UNIVERSITY

SATURDAY, DECEMBER 14, 1968

WARDWALK BOWL CLUBS

...iana today's "home" team)

...D); Delaware (7-3)

DELAWARE (7-3)

	Delaware	Opp.
Points Scored	288	156
First Downs	247	176
Yards Gained Rushing	3446	1552
Yards Lost Rushing	288	351
Net Rushing	3158	1201
Times Carried	639	473
Passes Attempted	199	290
Passes Completed	78	124
Passes Intercepted	11	25
Passing Percentage392	.428
Yards Gained Passing	1261	1652
Fumbles	27	12
Fumbles Lost	27	12
Total Plays	878	591
Kickoff Returns	29	53
Kickoff Return Yards	658	1090
Punts	48	70
Punt Yardage	1700	2578
Punt Average Yards	35.4	36.8
Punts Returned By	32	29
Yards Punts Returned	144	153
Total Yards Gained	5450	4563
Yards Penalized	327	442

1968 SCHEDULE AND SCORES

Delaware	Opponent	Place
35-0	Hofstra	Home
10-16	Villanova	Away
28-23	Mass. U.	Home
17-29	Buffalo U.	Away
28-0	West Chester	Home
50-27	Temple U.	Away
14-23	Rutgers U.	Away
37-13	Lehigh	Away
41-13	Boston U.	Home
38-12	Bucknell	Home

Delaware

DELAWARE OFFENSE

(86) Pat Walker	TE
(72) Joe Sheltzler	LT
(63) Hank Vollendorf	LG
(54) Chip Vaccarino	C
(65) Conway Hayman	RG
(70) Yancy Phillips	RT
(81) Ron Withelder	SE
(19) Tom Di Muzio	QB
(22) Dick Keller	LHB
(44) Sam Brickley	RHB
(32) Chuck Hall	FB

DELAWARE DEFENSE

(80) Jim Scelba	LE
(74) Paul Camp	LT
(78) Pete Cornelius	RG
(84) Bruce Hanley	RE
(67) Roy Holcomb	LLB
(64) John Favero	MLB
(60) Bob Novotny	RLB
(89) Joe Purzyki	CB
(29) Bob Masin	Safety
(36) Dick Keller	Safety
(41) Ron Klein	CB

DELAWARE SQUAD

(10) Jeff Lippincott	K
(12) Bob Buckley	QB
(16) Sonny Merkel	QB
(17) Mark Blair	E
(30) Chuck McCallion	HB
(33) Nick Donofrio	HB
(43) Bruce Fad	HB
(45) Pete Sundheim	HB
(47) Don McGee	HB
(48) Jim Lazarski	HB
(52) Jon Geisler	E
(62) Mike Barbieri	LB
(63) Dale Hall	RG
(66) Mickey Kwiatkowski	G
(75) Chuck Avery	T
(77) Jack Ruch	T
(79) Carmine De Rubeis	T
(85) Ted Gregory	E
(87) Mark Lipson	E

THE COACHES

HAROLD R. "Tubby" RAYMOND
(Mich. '50) Head Coach

DAVID M. NELSON
Athletic Director

RAYMOND "Scotty" DUNCAN
Assistant Director Athletics

ED MALEY (Delaware '57)

IRV WISNIEWSKI (Michigan '50)

JIMMY FLYNN (Delaware '56)

MICKEY HEINECKEN (Del. '61)

DON HARNUM (Maine '62)

PAUL BILLY (Muhlenberg '57)

GAME OFFICIALS

Field Judge.....Marlin B. Brandt (Ursinus)

Back Judge.....James V. Egan (Georgetown)

Electric Clock Operator.....Edward J. Cave



1968 DELAWARE UNIVERSITY VARSITY FOOTBALL TEAM

Front Row: (left to right) Chuck McCallion, Bill Laughlin, Jim Foster, Henry Vollendorf, Jim Scelba, captain Bob Novotny, coach Tubby Raymond, John Baumann, Paul Camp, Carmine DeRubeis, Jeff Lippincott, Scott Campbell.

Second Row: Bob Masin, Bob Vaughan, Yancy Phillips, Joe Shetzler, Reagan Beck, Larry Rolfes, Pete Cornelius, Doug Hunt, John Cipriano, Jeff Smith, John Favero, Mike Barbieri, Ron Whittington, Pat Walker.

Third Row: Jack Ruch, Tony Puken, Bob Krzanowski, Jon Geisler, Mike Kwiatkowski, Ray Holcomb, Ron Withelder, Chuck Avery, Conway Hayman, Ted Gregory, Eric Holle, Bruce Hanley, Chip Vaccarino.

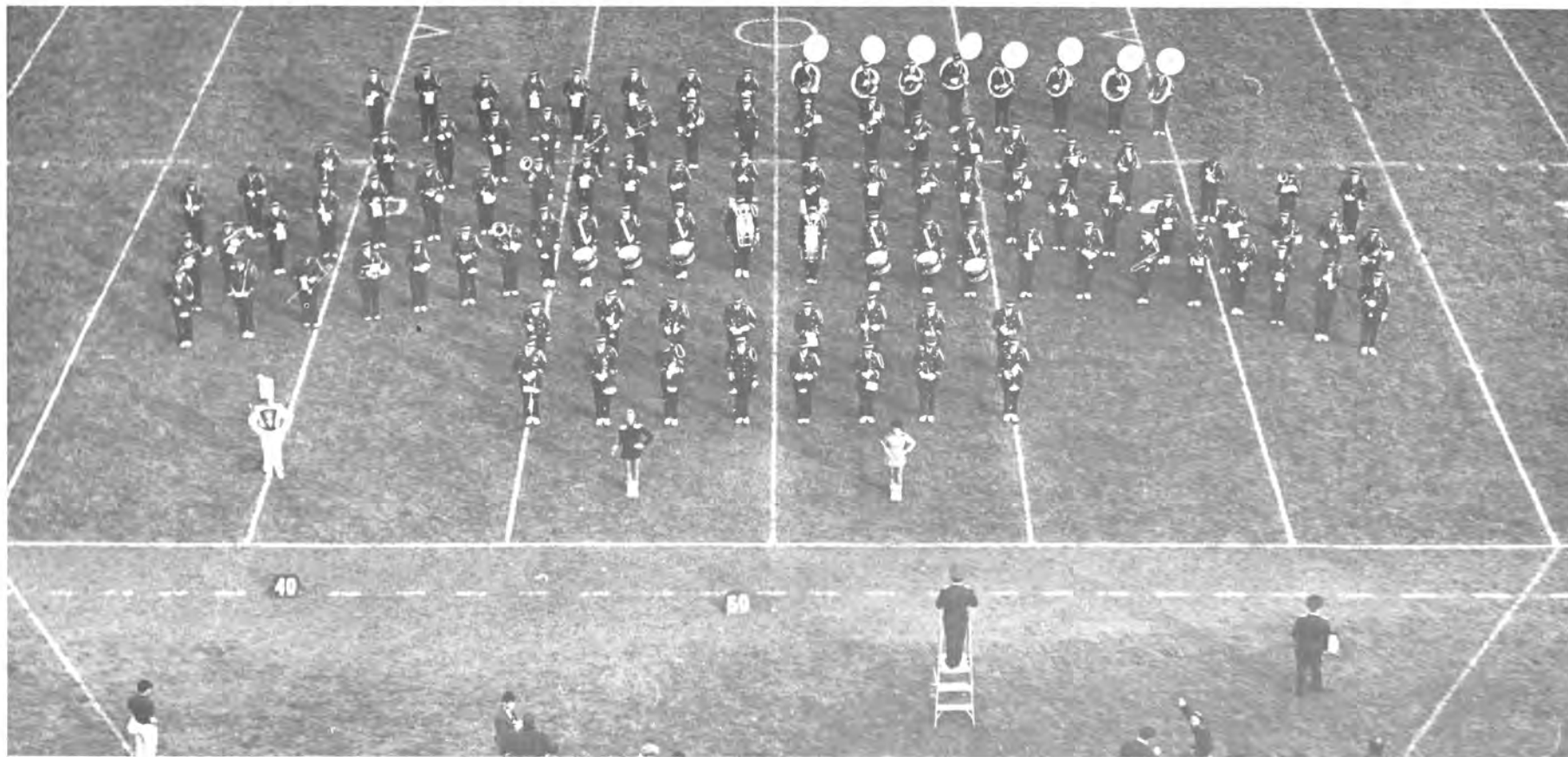
Fourth Row: George Lacsny, Dick Keller, Jim Lazarski, Skip Shiflett, Bob Buckley, Bill Suplee, Sonny Merkel, Mark Blair, Gerry Hotaling, Dick Smith, Sam Brickley, Bruce Fad, Chris Spicer, Joe Purzycki, Mark Lipson.

Fifth Row: Dave Smith, Dick Kelley, Nick Donofrio, Tom Leonard, Dan McGee, Pete Sundheim, Ron Klein, Jim Albertson, Chuck Hall, Lee Emmons, Carmen Infante, Tom Williams, Tom DiMuzio.

Back Row: Backfield coach Jimmy Flynn, end coach Ted Kempfski, freshman coach Paul Billy, end coach Don Harnum, line coach Ed Maley, line coach Irv Wisniewski, backfield coach Mickey Heinecken, graduate assistant Frank Linzenbold, assistant trainer Dick Leach, trainer Roy Rylander, graduate assistant Joe Mowrer, student trainer Keith Handling.

1968 DELAWARE ROSTER

No.	Player	Class	Pos.	Ht.	Wt.	Age	High School/Hometown
88	Jim Albertson	Jr.	E	6-0	205	20	Kinnelon/Kinnelon, N. J.
75	Charles Avery	So.	T	6-3	220	19	Toms River, N. J./Sonoma, Calif.
62	Mike Barbieri	So.	LB	6-2	213	19	Bishop Neumann/Philadelphia, Pa.
42	John Baumann	Sr.	HB	5-9	175	21	Kimball/Royal Oak, Mich.
58	Reagan Beck	So.	LB	6-0	206	19	Lower Merion/Wynnewood, Pa.
17	Mark Blair	So.	E	6-0	190	19	Windber Area/Windber, Pa.
44	*Sam Brickley	Jr.	HB	5-8	175	19	Lock Haven/Lock Haven, Pa.
12	Bob Buckley	So.	QB	5-10	175	19	Penn Charter/Philadelphia, Pa.
74	*Paul Camp	Sr.	T	5-10	210	20	Alexis I. Du Pont/Newark, Del.
50	John Cipriano	So.	LB	6-3	230	19	Delsea Regional/Vineland, N. J.
78	*Pete Cornelius	Jr.	T	6-0	204	20	Notre Dame/Trenton, N. J.
79	Carmine De Rubeis	Sr.	T	5-11	206	21	Memorial/E. Paterson, N. J.
19	*Tom Di Muzio	Jr.	QB	6-1	200	20	Bishop Neumann/Philadelphia, Pa.
33	Nick Donofrio	So.	HB	5-9	180	19	Mt. Pleasant/Wilmington, Del.
37	*Lee Emmons	Jr.	K	5-10	198	20	Palmyra/Cinnaminson, N. J.
43	Bruce Fad	So.	HB	6-0	195	20	Upper Dublin/Ft. Washington, Pa.
64	*John Favero	Jr.	LB	6-0	215	19	Paramus/Paramus, N. J.
52	Jon Geisler	So.	C	6-2	200	19	Lenape Reg./Moorastown, N. J.
85	Ted Gregory	So.	E	6-3	210	19	De La Warr/New Castle, Del.
32	Chuck Hall	So.	FB	5-10	198	19	Springfield/Springfield, Pa.
84	Bruce Hanley	Jr.	E	6-0	200	20	Toms River/Beachwood, N. J.
65	Conway Hayman	So.	G	6-3	240	19	Newark/Newark, Del.
67	Ray Holcomb	So.	LB	6-0	210	19	Wayne Valley/Wayne, N. J.
82	Eric Holle	So.	E	6-4	240	21	Bordentown Mil./Cincinnati, Ohio
90	Gerry Hofaling	So.	E	6-0	190	19	Card. Dougherty/Philadelphia, Pa.
11	Carmen Infante	Jr.	QB	5-10	177	20	Chichester/Linwood, Pa.
36	*Dick Keller	Jr.	HB	6-0	184	20	Columbiana/Columbiana, Ohio
22	Dick Kelley	So.	HB	5-10	175	19	Newark/Newark, Del.
41	Ron Klein	So.	HB	5-11	170	19	Clifford Scott/E. Orange, N. J.
66	Mike Kwiatkowski	Sr.	G	5-11	195	21	Clifton Hts./Clifton Hts., Pa.
34	George Lacsny	So.	FB	6-0	190	19	Central Catholic/Pittsburgh, Pa.
61	*Bill Laughlin	Sr.	K	6-0	195	21	Central Catholic/Pittsburgh, Pa.
48	*Jim Lazarski	Jr.	HB	5-10	163	21	Coughlin/Wilkes-Barre, Pa.
26	Tom Leonard	So.	E-HB	6-0	180	19	William Penn/New Castle, Del.
10	*Jeff Lippincott	Sr.	K	6-0	175	22	Manasquan/Belmar, N. J.
87	Mark Lipson	Jr.	E	6-3	205	19	Central/Philadelphia, Pa.
29	Bob Masin	Jr.	HB	5-7	189	20	Columbia/S. Orange, N. J.
30	*Chuck McCallion	Sr.	HB	5-10	175	20	De La Warr/New Castle, Del.
47	Dan McGee	So.	HB	6-1	187	19	St. Joseph's/Cinnaminson, N. J.
16	Sonny Merkel	So.	QB	6-1	170	19	Middletown/Middletown, Del.
60	*Bob Novotny	Sr.	LB	5-10	195	21	Columbia/Maplewood, N. J.
70	Yancy Phillips	So.	T	6-0	220	19	Carlisle (Pa.)/Ft. Benning, Ga.
68	Tony Puken	Jr.	T	6-2	203	20	Florence Township/Roebling, N. J.
89	*Joe Purzycki	Jr.	E-HB	5-11	185	21	Our Lady of the Valley/Newark, Del.
56	Larry Rolfes	So.	C	6-0	212	20	De Matha Cath./Beltsville, Md.
77	Jack Ruch	Jr.	T	6-1	206	20	Pottsville Area/Pottsville, Pa.
80	*Jim Scelba	Sr.	E	6-2	215	22	Southern Reg./Beach Haven, N. J.
72	Joe Shetzler	So.	T	6-2	215	19	William Penn/New Castle, Del.
28	Skip Shiflett	So.	HB	5-10	155	18	Poly/Baltimore, Md.
46	Dave Smith	So.	HB	5-9	161	19	Conrad/Newport, Del.
83	Dick Smith	So.	E	6-2	190	19	Wilson/Reading, Pa.
69	Jeff Smith	Jr.	G	6-2	195	20	Henderson/West Chester, Pa.
15	Chris Spicer	Jr.	QB	6-2	192	20	Haddonfield/Haddonfield, N. J.
45	Pete Sundheim	So.	HB	5-10	190	19	Sparta Cheshire Acad./Sparta, N. J.
24	Bill Suplee	So.	FB	5-11	190	19	Mainland Reg./Linwood, N. J.
25	*Jack Tracey	Jr.	HB	6-0	180	20	Beaver Falls/Beaver Falls, Pa.
54	*Chip Vaccarino	Jr.	C	6-0	225	22	Lafayette/Brooklyn, N. Y.
51	Bruce Vaughan	So.	T	6-2	220	19	Wilson/West Lawn, Pa.
63	*Hank Vollendorf	Sr.	G	5-10	195	21	Upper Dublin/Maple Glen, Pa.
86	Pat Walker	So.	E	6-5	205	20	Newark/Newark, Del.
14	Tom Williams	So.	QB	6-0	185	19	Lackawanna Trail/Dalton, Pa.
81	*Ron Withelder	Jr.	E	5-10	178	20	Ridley Twp./Folsom, Pa.



ATLANTIC CITY WELCOMES THE UNIVERSITY OF DELAWARE MARCHING BAND

The University of Delaware Marching Band is composed of 104 playing members, representing all of the colleges in the University and most of the disciplines. David Appleby is the drum major and Miss Jeanne Adelman and Miss Nancy Northrup are the majorettes. The band is under the co-direction of Professor J. Robert King and Mr. David P. Blackinton, Instructor of Brass Instruments. The format of the marching band shows at Delaware is essentially of a pageant nature, with dance routines, concert numbers and some precision drill worked in for variety. The Delaware Marching Band has taken an active part in the improvement of high school and college marching bands in the Delaware area by setting a fine standard of performance and by assisting band directors with problems relating to charting, budget, recruitment, and other facets of the marching band program.

The Delaware Marching Band has prepared a show for the Boardwalk Bowl entitled "Highlights of 1968." Opening with a trolley formation from our "Discovering America" show, the band will play "San Francisco" and move the trolley uphill. This will be followed by a concert formation and the per-

formance of "Thoroughly Modern Millie" from the "Roaring 20's" show. The "Spiritual" show finds the band re-enacting the famous Battle of Jericho. From the show on musical instruments, the band has chosen the Grand Piano formation and the theme from the "Warsaw Concerto." To finish the entertainment for the afternoon, the band will perform a dance routine to "Old Folks at Home" by Stephen Foster.

THE DELAWARE BAND BOWL PROGRAM — The music being used in the pre-game and half-time show today will be: "D" Fanfare, written and arranged by John Anderson of our staff; Orange Bowl March by Henry Fillmore; Delaware Fight Song by Kelly; Alma Mater by Anthony J. Loudis; Great Day by Vincent Youmans, arrangement by Yoder; San Francisco, arrangement by Bill Moffitt; Thoroughly Modern Millie by James Van Heusen, arrangement by Glenn Osser; Joshua Fit the Battle of Jericho, arrangement by John Anderson; Warsaw Concerto, arrangement by Jackboice; Old Folks at Home by Stephen Foster, arrangement by John Anderson.

Harold R. (Tubby) Raymond, Delaware's Head Football Coach

Harold R. (Tubby) Raymond is in his third season as head football coach at the University of Delaware.

Raymond, who served as Dave Nelson's backfield coach for 12 years, became the head coach in the spring of 1966 when Nelson resigned to devote full-time to his duties as athletic director. The new Hen mentor took up where his illustrious predecessor left off — directing the 1966 Blue Hens to a 6-3 record and the Middle Atlantic Conference championship. The Hens were 2-7 last year.

Long recognized as a brilliant football tactician and strategist, Raymond served as both a line coach and a backfield coach during his career

as an assistant. He was the line coach at the University of Maine before joining the Delaware staff in 1954.

A native of Flint, Mich., and a 1950 graduate of the University of Michigan, Raymond was a guard and quarterback on the Wolverine eleven and captained the 1949 baseball team. He played two years in the New York Yankees' organization and was head football coach at University High School in Ann Arbor, Mich., before going to Maine.

Tubby served as Blue Hen baseball coach for nine years and compiled the best coaching record in the history of the sport at Delaware with a record of 141 wins and 56 losses. He left the baseball post before



the 1965 season to become a full-time football assistant. Six of Raymond's nine teams qualified for the NCAA District II playoffs.

As Nelson's backfield coach at Delaware, Raymond played a major role in developing the powerhouse 1959, 1962 and 1963 Blue Hen teams which won the M.A.C. title and the Lambert Cup, symbolic of eastern small college supremacy. The 1963 squad also won United Press International recognition as the top small college team in the country.

Raymond helped develop two first team Little All-American players in quarterback Don Miller and halfback Mike Brown. Tackle-linebacker Herb Slattery was a first team Little All-American in Raymond's first season as head coach.

The Blue Hen coach is a skilled bridge enthusiast and a very fine artist. He and his wife Sue, a Delaware graduate, have three children and reside in Windy Hills, a Newark suburb.

Delaware's Queen Bids for National Title

Meet Brenda Shrum, 19-year-old Delaware U. coed, who not only is the Delaware U. Queen at the Boardwalk Bowl, but is also one of 14 finalists in the Miss College Football Centennial Queen Contest. She has made two national television appearances in the past two weeks and her picture appears in last week's issue of Life Magazine. On TV she appeared on the Joey Bishop Show and at halftime of the USC-Notre Dame game.

The contest is sponsored by the National Collegiate Athletic Association and Chevrolet. The eventual winner will be crowned at the East-West Shrine Game in San Francisco on Dec. 28, and will reign over the 100th anniversary celebration of college football during all of 1969, receive a \$1,000 scholarship and use of a Chevy sports car during her reign.

Miss Shrum, a University of Delaware sophomore, is a 5-foot-8 brunette and represents nearly 200 colleges and universities as one of the finalists. She is officially College Division East Queen and represents all of the NCAA College Division institutions east of the Mississippi River.

Eleven of the finalists come from the NCAA's major conferences. One represents the nation's major independents and the other two from the East and West College Division schools.

The daughter of Mr. and Mrs. Robert F. Shrum, 1122 Jamaica Road, Lancaster, Pa., Brenda is majoring in elementary education.



The University of Delaware



OLD COLLEGE

In 1738, when George II was on the throne of England, the members of the Presbytery of Lewes, Delaware, expressed in old-fashioned words a very modern thought. They felt that there was need for the academic training of divinity students, whose talents "for want of being improved are marred of their usefulness with a formidable train of sad consequences."

Accordingly, the Presbyterian Synod at Philadelphia was sent a petition asking that candidates for the ministry be examined by an appropriate committee before being licensed to preach. The petition was favorably received, and in 1743 it was agreed to establish a school. The scholarly Reverend Francis Alison had just opened a private school in his manse at New London, Pennsylvania, and this school was taken over by the Church. In the course of the next two hundred years this small school developed into the University of Delaware.

In 1765, the school came to Newark, and in 1769 it was chartered by Thomas and Richard Penn, and known from then on as Newark Academy. Instruction was interrupted during the Revolutionary War when the Academy building was converted to a shoe factory to supply the Continental Army.

During the early years of the Nineteenth Century sentiment in favor of establishing an institution of higher learning in Delaware had been growing. An act of the Legislature on February 5, 1833, created Newark College, a degree-granting institution, with which Newark Academy was merged in 1834, the year that the building now known as Old College was erected. The Academy continued as the College's preparatory department until 1870, when work below the collegiate grade was dropped.

Meanwhile, in 1862 President Lincoln signed the Morrill Land-Grant Act of Congress that created colleges in the various states "to promote liberal and practical education . . . in the several pursuits and professions of life." An act of the Delaware General Assembly, March 14, 1857, brought Delaware College into the family of the Land-Grant colleges.

In 1913, the Women's College, affiliated with Delaware College was established, and it opened in 1914. In 1921, Delaware College and the Women's College were combined under the name of the University of Delaware. Separate classes for men and women were held until September, 1944, when the two institutions

were completely merged into the present university structure.

By charter, control of the University is vested in a Board of Trustees of twenty-eight members chosen from the three counties of the State. The President of the University, the Governor of the State, the Master of the State Grange, and the President of the State Board of Education are ex-officio members of the Board of Trustees.

The major administrative units of the University include the College of Arts and Science, the College of Agricultural Sciences, the College of Business and Economics, the College of Nursing, the College of Education, the College of Engineering, the College of Home Economics, the College of Graduate Studies, the Division of Physical Education and Athletics, University Extension Service.

The University of Delaware is fully accredited by the Middle States Association of Colleges and Secondary Schools, the accrediting agency for this region. Professional programs are given surveillance by appropriate associations such as the Engineers Council for Professional Development and the American Chemical Society.

INDIVIDUAL STATISTICS OF THE BOARDWALK BOWL CLUBS

Indiana

RUSHING	TC	YGR	YLR	NYR	AVG	TD
Cox, hb	165	657	17	640	3.9	10
McCracken, fb	86	483	16	467	5.4	4
Blucas, qb	83	485	81	404	4.9	2
Rinchuse, fb	53	239	5	234	4.4	4
Butera, fb	33	198	0	198	6.0	1
Cortazzo, qb	35	130	56	74	2.1	3
Pipkins, qb	21	60	32	28	1.3	1
Gerhart, te	2	1	0	1	0.5	0
Persichetti, hb	1	0	0	0	0.0	0
Totals	476	2243	207	2046	3.6	25

PASSING	PA	PC	INT	YDS	TD	Pct
Blucas, qb	141	65	5	899	9	.46
Cortazzo, qb	42	23	1	463	4	.55
Pipkins, qb	27	12	1	200	3	.44
Totals	210	100	7	1562	16	.48

INTERCEPTION RETURNS	NO	YDS
Ruffner, dhb	5	140
Hasse, cb	3	39
Clark, cb	3	31
Gutshall, cb	2	0
Priest, cb	1	52
Dellavechio, mg	1	11
Weber, lb	1	6
Basehore, dhb	1	0
Totals	17	279

PUNTING	NO	YDS	AVG
Basehore, dhb	27	975	36.1
Nixon, lb	5	198	39.6
Yanni	2	52	26.0
Totals	34	1225	33.9

PASS RECEIVING	NO	YDS	TD	AVG
Smith, flb	33	552	7	16.7
Brochetti, se	16	280	2	17.5
Draganac, se	15	223	2	14.9
Stark, te	17	221	2	13.0
Ziegler, se	9	172	2	19.1
Buzzelli, te	5	71	1	14.2
Rosso, te	1	20	0	20.0
Rinchuse, fb	1	19	0	19.0
Cox, hb	1	10	0	10.0
Butera, fb	1	8	0	8.0
McCracken, fb	1	1	0	1.0
Totals	90	1577	16	

SCORING	TD	PAT	FG	Pts
Cox, hb	10	0-0	0-0	60
Tate, lb	0	33-36	6-12	51
Blucas, qb	7	0-0	0-0	42
Smith, flb	4	1-1	0-0	26
McCracken, fb	4	0-0	0-0	24
Rinchuse, fb	4	0-0	0-0	24
Stark, te	4	0-0	0-0	24
Brochetti, se	3	0-0	0-0	18
Cortazzo, qb	3	0-0	0-0	18
Draganac, se	3	0-0	0-0	18
Ziegler, se	2	0-0	0-0	12
Barto	0	7-9	0-0	7
Butera, fb	1	0-0	0-0	6
Buzzelli, te	1	0-0	0-0	6
Hasse, cb	1	0-0	0-0	6
Pipkins, qb	1	0-0	0-0	6
Ruffner, dhb	1	0-0	0-0	6
McGarvey, k	0	1-1	1-3	4
Totals	49	42-46	6-15	358

Delaware

RUSHING	TC	YGR	YLR	NYR	AVG	TD
Hall, fb	193	1067	48	1019	5.3	9
Kelley, hb	146	840	36	804	5.5	2
Brickley, hb	64	472	32	440	6.9	5
Di Muzio, qb	117	522	147	375	3.2	9
Lazarski, hb	32	161	6	155	4.8	0
Donofrio, fb	20	109	0	109	5.5	0
McGee, hb	24	105	4	101	4.2	1
Buckley, qb	17	62	2	60	3.2	2
Tracey, hb	14	62	7	56	4.0	0
Lacsny, fb	8	42	0	42	5.3	0
Infante, qb	2	3	-2	1	5.3	0
Emmons, fb	1	0	-2	-2	-2.0	0
Laughlin, k	1	0	-2	-2	-2.0	0
Totals	639	3446	288	3158	5.0	28

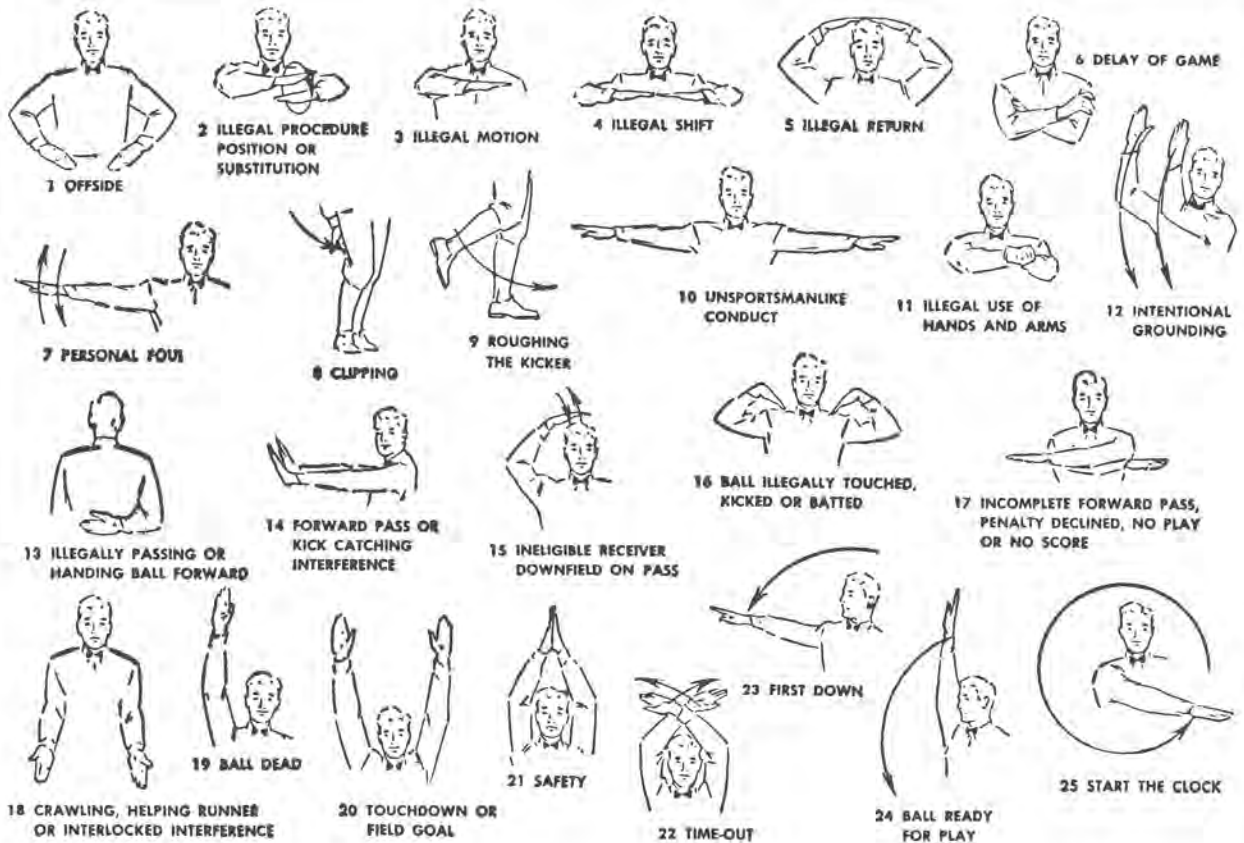
PASSING	PA	PC	INT	YDS	TD	Pct
Di Muzio, qb	191	76	10	1221	10	.398
Buckley, qb	7	2	1	40	2	.286
Kelley, hb	1	0	0	0	0	.000
Totals	199	78	11	1261	12	.392

PASS RECEIVING	NO	YDS	TD	AVG
Withelder, e	34	626	7	18.4
Kelley, hb	11	187	2	17.0
Lipson, e	7	109	0	15.6
Brickley, hb	6	90	1	15.0
Hall, fb	6	84	1	14.0
Lazarski, hb	5	59	0	11.8
Walker, e	5	59	0	11.8
McGee, hb	1	15	1	15.0
Albertson, e	1	12	0	12.0
Lacsny, fb	1	12	0	12.0
Tracey, hb	1	-2	0	-2.0
Totals	78	1261	12	

INTERCEPTION RETURNS	NO	YDS
Klein, hb	6	11
Keller, safety	5	107
Purzycki, hb	3	45
Favero, lb	3	16
McCallion, hb	2	14
Merkel, hb	2	7
Sundheim, safety	1	25
Masin, safety	1	4
Hanley, e	1	0
Holcomb, lb	1	0
Totals	25	229

PUNTING	NO	YDS	AVG
Emmons, fb	47	1667	35.5
Laughlin, k	1	33	33.0
Totals	48	1700	35.4

SCORING	TD	PAT	FG	T
Hall, fb	10	0-0	0-0	60
Di Muzio, qb	9	2-2	0-0	56
Lippincott, k	0	34-37	4-10	46
Withelder, e	7	0-0	0-0	42
Brickley, hb	6	0-0	0-0	36
Kelley, hb	4	0-1	0-0	24
Buckley, qb	2	0-0	0-0	12
McGee, hb	2	0-0	0-0	12
Totals	40	35-40	4-10	288



PENALTIES

1. OFFSIDE. by either team; Violation of scrimmage or free kick formation; Encroachment on neutral zone — loss of Five Yards.

2. ILLEGAL PROCEDURE, POSITION OR SUBSTITUTION — Putting ball in play before Referee signals "Ready-for-Play"; Failure to complete substitution before play starts; Player out-of-bounds when scrimmage begins; Failure to maintain proper alignment of offensive team when ball is snapped; False start or simulating start of a play; Taking more than two steps after Fair Catch is made; Player on line receiving snap; Free kick out-of-bounds — Loss of Five Yards.

3. ILLEGAL MOTION — Offensive player illegally in motion when ball is snapped — Loss of Five Yards.

4. ILLEGAL SHIFT — Failure to stop one full second following shift — Loss of Five Yards.

5. ILLEGAL RETURN of ineligible substitute — Loss of 15 yards.

6. DELAY OF GAME — Consuming more than 25 seconds in putting the ball in play after it is declared ready for play; Interrupting the 25-second count for any reason other than a free or excess time out granted by Referee; Failure to remove player for whom excess time out was granted; Crawling — Loss of Five Yards. Team not ready to play at start of either half — Loss of 15 Yards.

7. PERSONAL FOUL — Tackling or blocking defensive player who has made fair catch; Piling on; Hurdling; Grasping face mask of opponent; Tackling player out of bounds, or running into player obviously out of play; Striking an opponent with fist, forearm, elbow or locked hands; Kicking or kneeing — Loss of 15 Yards. (Flagrant offenders will be disqualified.)

8. CLIPPING — Loss of 15 Yards.

9. ROUGHING THE KICKER or holder — Loss of 15 Yards.

10. UNSPORTSMANLIKE CONDUCT—Violation of rules during intermission; Illegal return of suspended player; Coaching from side lines; Invalid signal for Fair Catch; Persons illegally on field — Loss of 15 Yards. (Flagrant offenders will be disqualified.)

11. ILLEGAL USE OF HANDS AND ARMS by offensive or defensive player — Loss of 15 Yards.

12. INTENTIONAL GROUNDING of forward pass — Loss of Five Yards from spot of pass plus Loss of Down.

13. ILLEGALLY PASSING OR HANDING BALL FORWARD — Loss of Five Yards from spot of foul Plus Loss of Down.

14. FORWARD PASS OR KICK CATCHING INTERFERENCE—Interference with opportunity of player of receiving team to catch a kick — Loss of 15 Yards. Interference by member of offensive team with defensive player making pass interception — Loss of 15 Yards Plus Loss of Down. Interference by defensive team on forward pass — Passing Team's ball at Spot of Foul and First Down.

15. INELIGIBLE RECEIVER DOWNFIELD ON PASS — Loss of 15 Yards.

16. BALL ILLEGALLY TOUCHED, KICKED OR BATTED—Forward pass being touched by ineligible receiver beyond the line of scrimmage — Loss of 15 Yards from Spot of Preceding Down and Loss of a Down. Eligible pass receiver going out-of-bounds and later touching a forward pass — Loss of Down; Illegally kicking a free ball — Loss of 15 Yards.

17. INCOMPLETE FORWARD PASS — Penalty declined; No play or no score.

18. HELPING THE RUNNER, or interlocked interference — Loss of 15 Yards.

Meet the Official Hostesses to the Boardwalk Bowl Teams



MISS ATLANTIC CITY — Kathie Gribbin, will be rooting for Indiana's "Big Indians."



MISS ATLANTIC COUNTY — Paulajane D'Amato, will be rooting for Delaware's "Fighting Blue Hens."

Boardwalk Bowl Highlights 39 Years of Sports Events in Auditorium

(Continued from Page 1)

cancelled with the death of President Kennedy since the game had been scheduled for that Saturday, and the nation was in mourning. It was that same year that the present Indiana coach, "Chuck" Klausning, took over the reigns as athletic director and head coach.

So, it is with justifiable pride, that 39 years after the nation's first indoor football game, we are hosts today to the first indoor NCAA football championship. We are grateful to the NCAA, to the two competing schools, and especially to you, who have come here to see them play.



DR. WILLIS E. PRATT
President, Indiana University of Pennsylvania

*Welcome
Mr.
President*



DR. EDWARD ARTHUR TRABANT
President, University of Delaware

Boardwalk Bowl Committee

OUR THANKS TO . . .

The Boardwalk Bowl Boosters, members of the Atlantic City Special Events, Inc., the American Broadcasting Co., the officers and officials of the NCAA, Mr. Ernest Casale of Temple University, the NCAA Site and Selections Committees, and the administrative executives, the coaches, teams and student bodies of the University of Delaware and Indiana of Pennsylvania University for their help in making the first NCAA Boardwalk Bowl Game a success from every standpoint.

COMMISSIONER WILLIAM T. SOMERS

MICHAEL A. FIORE

Co-Chairmen of Boardwalk Bowl Committee



COMMISSIONER WILLIAM T. SOMERS
Co-Chairman



MICHAEL A. FIORE
Co-Chairman

AND WE SALUTE THE BOARDWALK BOWL BOOSTERS —

THE FIRMS, ORGANIZATIONS AND INDIVIDUALS WHO SUPPORTED THIS EVENT

FIRMS

Abbotts Dairies
L. C. Adams & Son
Acacia Mutual Life Ins. Co.
Alfred's Villa
John E. Allen
Anchor Savings & Loan Assn.
Angelo's Barber Shop
Arrow Savings & Loan,
Newark
A. C. Board of Trade
A. C. Coat Co.
A. C. and County Board
of Realtors
A. C. Optimist Club
A. C. Parking Lot Assn.
A. C. Press
A. C. Race Course
A. C. Raceway
A. C. Restaurant Assn.
A. C. Transportation Co.
Atlantic Beverage Co.
Atlantic Coast TV Cable Co.
Atlantic Packing Co.
Augustine's
Avoda Club
Beach Front Gardens Motel
Beachview Nursing Home
Berk's Gift Ware
Boardwalk National Bank
Joseph Boyle, Realtor
Brick Lumber Co.
Brooks & Idier
Capitol Furniture Co.
Calvi Electric Co.
Carroll's Tavern, Inc.,
Manahawkin
Casel's Super Market
Chalfonte-Haddon Hall
Boardwalk Div., Chamber
of Commerce
Petti Cherubino & Co., Inc.
Clarendon Hotel
Coast News Distributors
Colonial Frozen Foods
Colony Motel
Colton Manor Hotel-Motel
Commonwealth Land Title
Insurance Co.
Concours Supply Co.
Crillon Motel
Dealers Liquor Co.
Dennis Hotel-Motel
Dunes Motel
Electro Sign Displays, Inc.
Fairmount Inn, Cardiff
Fischer Flowers
Freund Brothers
Guardian Savings & Loan
Assn.
Guarantee Bank & Trust Co.
A. M. Greenfield & Co., Ins.
Hackney's Restaurant
E. J. Harrold, Inc.
Holiday Inn
Howard Johnson's
Motor Lodge
Inlet Social & Athletic Club
Ivens Pharmacy, Inc.
Junior's Restaurant
Kay Electric Supply Co.
Kay's Service Center
Kents Restaurant & Baking
Co.

Kimberley, Ltd.
Lake Lenape Land Co.
Lashman & Kuopperman
McCarthy Ford, Inc.
Mack Equipment & Machine
Co.
Maine Paper & Janitor
Supply Co.
Marlborough-Blenheim
Mathis & Co.
Mechanics Supply Co.
Midget Auto Races
The Neptune Shop
Newark Evening News
N. J. Bell Telephone Co.
Orsatti's Restaurant &
Lounge
James Otton, Realtor
Peterson's Brick Work
The Philadelphian
Poli's Dress Shop
Price Waterhouse & Co.
Rachael's
Ranch House
John G. Reutter Assoc.
Liber Rich & Sons, Inc.
Schiff-Charney
Schoopy Jewelers
Sheburne Hotel
Shore Motor Corp.
Historic Smithville Inn
Society Studio
Soble Construction Co.
South Jersey Distributors
Southern Jersey Airways
Steel Pier
Steelman's Laundry
Steelman, Graves & Waters,
Inc.
S. B. & B. H. Strouse
Superior Enclosures,
Woodbury
Terminal Market
Traymore Hotel
Tuckahoe Inn
United Convention
Decorators
Ventnor-Margate Lions Club
Volk Corp.
Walker-Rogge Co.
Wall High School
WMID
WOND
WFPG

INDIVIDUALS

Adams, R. Stanley
Adler, John
Allen, John E.
Angelo, Alan
Antell, Len
Badger, Bob
Beaupit, Douglas
Beltz, Paul
Berger, Howard
Bergman, Sidney
Berke, Stanley
Blair, Richard
Blank, Fred
Boyle, Joseph
Bray, Alfred; Newark
Brick, J. Benjamin
Britten, Albert
Broadnix, Mrs. James
Brown, Vernon

Buckman, Ray
Budd, Herbert A.
Busshell, R. J.
Callan, James
Calvi, Frank
Campanozzi, Anthony;
Babyion, N. Y.
Carroll, A. W.
Carroll, John
Casper, Martin
Chapman, Fred
Chester, J.; Ocean City
Chew, John
Ciambrone, Joseph
Clunn, Roberta
Cohen, Charles
Cohen, Mike
Cohn, Stanley
Collins, William
Connelly, Benjamin
Cook, George
Cooper, Mrs. David
Corcoran, George
Cross, Henry
Curtin, Joseph
De Luca, Camillo
Dempski, Pete; Woodstown
Donovan, William
Doucette, Paul
Duoor, Melvin
Ewing, Mark
Farley, Senator Frank S.
Fetter, George
Fiore, Mrs. Carl
Fiore, Michael A.
Fischer, Charles
Fisher, Robert
Fisher, Wm.; Stone Harbor
Flink, Louis
Floriani, Chief Mario
Flynn, E. C.; W. Keansburg
Fox, Ben
Freund, E. M.
Gaffney, Mary
Gallen, Joseph
Gassman, David
Giordano, Frank
Gravatt, Frank P.
Graves, George
Green, Ralph
Hamid, George Jr.
Haneman, Howard
Harp, Ted
Harrold, E. J.
Hartman, Mrs. Edna
Harvat, Mrs. Martin
Hayne, Mrs. John
Hedelt, Al
Hermann, Joseph
Hollander, Leonard
Hinman, Robert
Hurst, Stanley
Ivens, Robert W.
Jackson, Alfred
Jakovics, Ray; Newark
Jobin, Mrs. Adalide
Johnson, Albert
Karp, Jack
Katz, Samuel
Kay, Howard
Kean, Larry
Kisby, Fred
Klinghoffer, James
Krasney, Maurice
Laquer, Dr. U. J.
Lee, Reginald

Lenz, Peter A.
Levy, Robert
Lippincott, John H.
Lynch, Joseph
Lynde, Howard
Marsh, Raymond R.
Mason, Ida
Mathis, L. Edison
Maxium, Mrs. James
Meyers, Mrs. Kathy
Miller, H. S.
Mitchell, Neill
Morris, Morgan
Mullohy, John J.
Murphy, Thomas
McCarthy, D. J.
McCullough, James
McGinley, Bernard
McNellis, Edward
Naame, Dr. John M.
Neustadter, Max
Neustadter, Milton
Noyes, Fred and Ethel
Okonou, Richard
Oliver, Fred
Orsatti, Arnold
Otton, James
Oxford, Charles; New York
Pacula, Mike
Penman, Charles
Pengan, John
Peterson, Lawrence
Petti, Cherubino, Jr.
Pickens, Sid
Pietrano, Thaddeus;
Roselle, N. J.
Potter, Harold
Prager, Joseph
Previti, Anthony
Quirk, Jim; Long Branch
Reed, Thomas B.
Reutter, John G.
Rey, Anthony
Rich, Liber
Rishel, Fred
Ritson, Warren
Roberts, Davie;
Brielle, N. J.
Rogge, John A.
Rosenblit, Sidney
Ryan, Elliot S.
Salzman, Bernard
Schmelzkoff, Herman
Schoppy, William
Schusterman, Arnold
Syracusa, John J.
Snell, James
Stanbough, J.
Stark, Ray
Steel, Paul; Cherry Hill
Steelman, Harold
Stockinger, George
Strouse, Bernard
Stuenkel, Elton E.
Taylor, Ralph
Taylor, Ronald G.
Toomey, James
Tunney, Richard
Usry, Jim
Volk, Harry, Jr.
Walker, Joseph
Walton, K. B.
Weeks, William
Weinstein, Gerald
Wood, Raymond
Young, Curt

AUDITORIUM

Frank McGue
Herb Foster
Thomas Finnegan

TICKETS

Leo Caramma
Angelo Frascone
Thomas McDonough
Clinton Newsom

PRESS BOX

Ed Nichterlein
Tom Paparocki
Al Shrier, Temple U.
Jon Foley, NCAA

SPEAKERS BUREAU

Walt Clark
William Flatley
Al Owan
Mall Dodson

AREA TEAMS AND BANDS

Charles Donaway
Jack Eisenstein
William Faunce
Donald Hayes
William Hesketh
Seymour "Pinky" Kravis
Dr. Luther G. Shaw

PUBLICITY

Howard Berger
Bob Badger
Lou Cunningham
Mike Elliott
Charles Seel

PUBLIC RELATIONS AND PROGRAM PRODUCTION

Mall Dodson
John Morris, U. of Delaware
Larry Judge, Indiana U.

COMMITTEE SECRETARIES

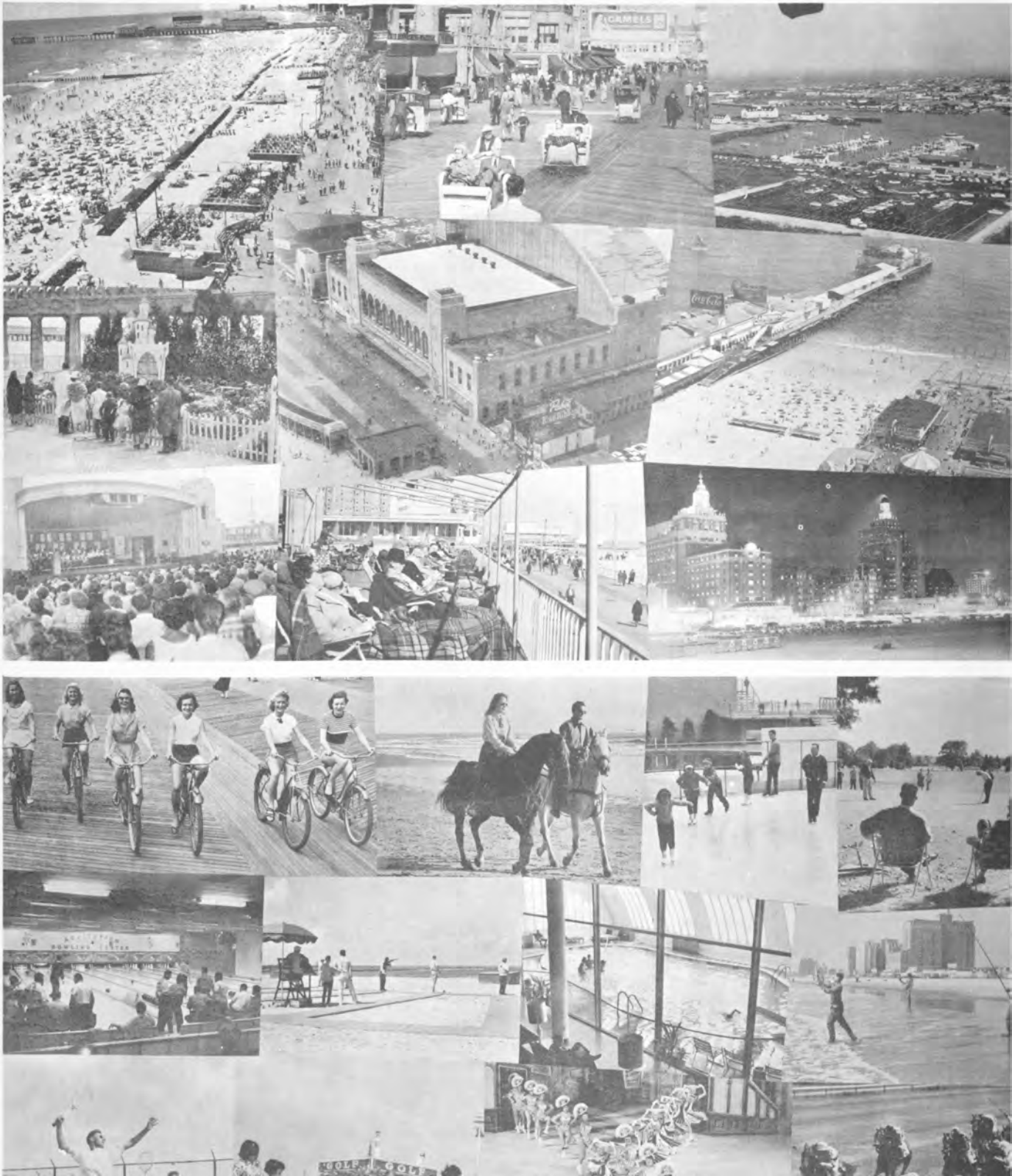
Elaine Frayne
Lucille Marranzini

Health and Recreation...

Atlantic City

Fun and Frolic...

Take Your Choice

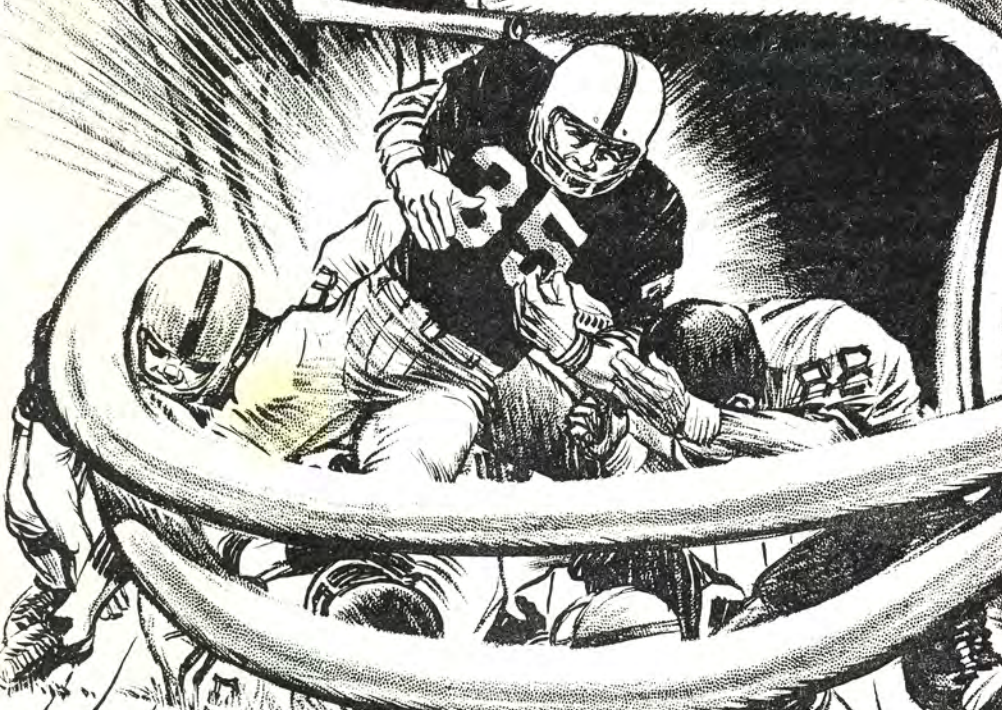


THE CLASH BETWEEN
INDIANA (PA.) STATE
UNIVERSITY and
THE UNIVERSITY
OF DELAWARE
FOR THE NCAA ATLANTIC
COAST CHAMPIONSHIP
ADDS AN EXCITING
CHAPTER TO
CONVENTION HALL'S
BRILLIANT
HISTORY

CONVENTION HALL

THE KICK-OFF

-THE FIRST INDOOR
INTERCOLLEGIATE
FOOTBALL GAME
-BETWEEN LAFAYETTE
AND WASHINGTON and
JEFFERSON - WAS
PLAYED IN ATLANTIC CITY'S
CONVENTION HALL ON
OCTOBER 25, 1930



BOARDWALK BOWL

THE FAMOUS
CONVENTION
HALL SHOULD
ROCK WITH
CHEERS FOR
THE INDIANS
AND THE BLUE
HENS

DAD