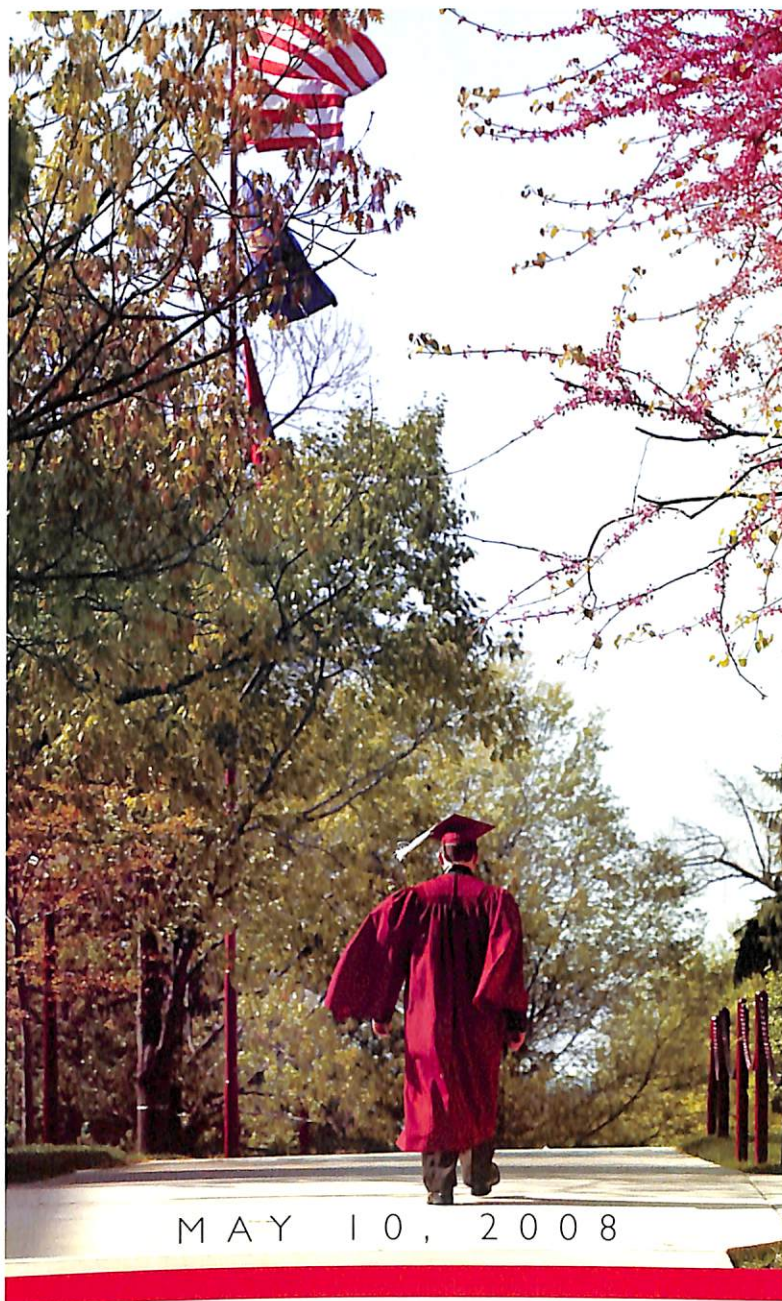
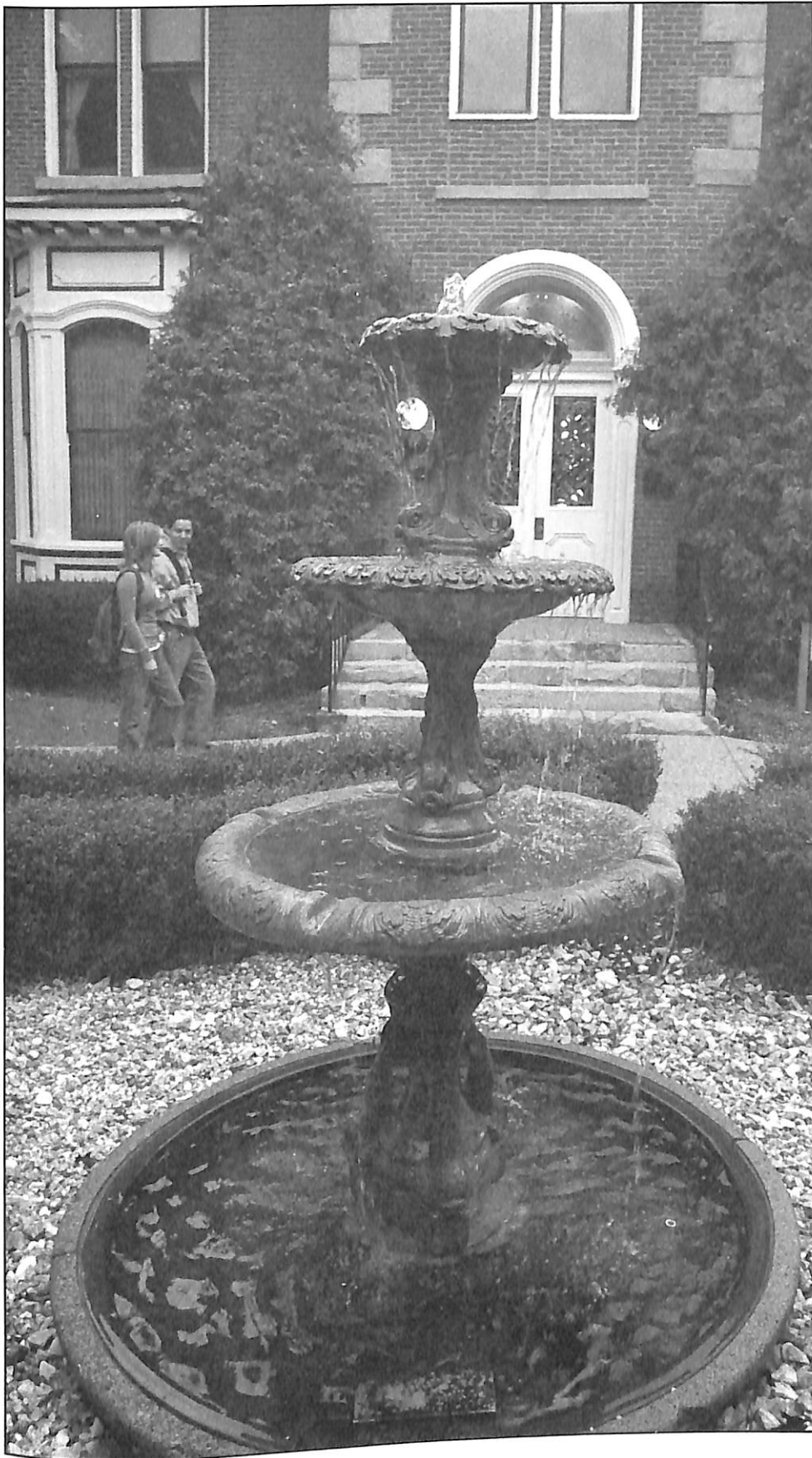


COMMENCEMENT



 Indiana University
of Pennsylvania



Photography: Keith Boyer
Printed by University Printing

Welcome

The IUP community extends a warm welcome to the families and friends of a very distinguished graduating class. Over the past several years, the class members have worked and studied and are now ready to begin a new chapter in their lives. For some, this will mean a job and the responsibilities of a family. For others, it will mean graduate or professional school. Whatever course their future takes, we hope that our graduates will look back on their years here as having prepared them to meet and deal with the challenges that life will present.

In today's ceremony, we recognize more than one thousand undergraduate and graduate students for their academic achievement. The university joins parents, spouses, relatives, and friends in congratulating the graduates on their accomplishments and in wishing for them the happiness of a productive life, the respect of their fellow human beings, and the love of their families.

Best of luck and
congratulations.

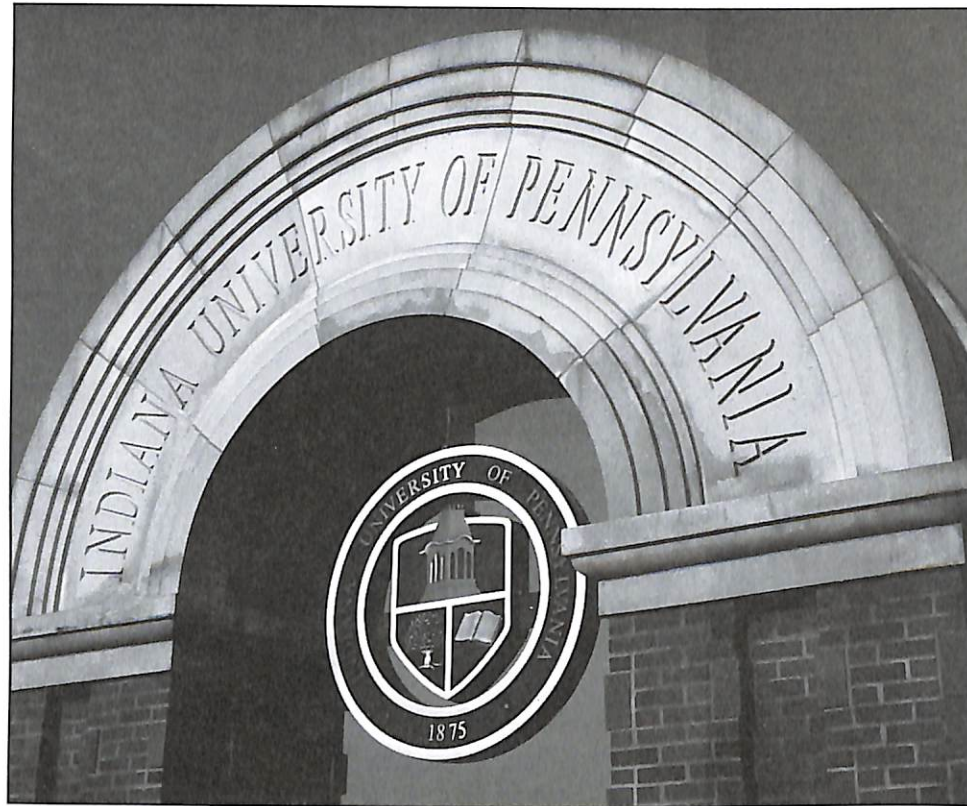
Commencement

Indiana
University of
Pennsylvania

George P. Miller
Stadium

Eleven O'Clock

Saturday, May
Tenth, Two
Thousand and
Eight



The Star-Spangled Banner

O Say! Can you see, by the dawn's early light,
What so proudly we hail'd at the twilight's last gleaming,
Whose broad stripes and bright stars, thro' the perilous fight,
O'er the ramparts we watch'd were so gallantly streaming
And the rocket's red glare, the bombs bursting in air,
Gave proof thro' the night, that our flag was still there.

O, say, does that Star-Spangled Banner yet wave
O'er the land of the free and the home of the brave.

Alma Mater

To our noble Alma Mater's name
We, her children, sing a joyful lay
And to her a new allegiance pledge,
That lives beyond a day.

Refrain: Sing, O Sing, Our Alma Mater's praise,
Hail, O Hail, her colors' gleaming hue!
Give to her our homage and our love
And to her name be true.

Tony Atwater, President

President's Executive Council

David Werner, interim provost and vice president for Academic Affairs
Susanna Sink, interim vice president for Administration and Finance
Rhonda H. Luckey, vice president for Student Affairs
Robert O. Davies, vice president for University Relations
Jimmy A. Myers, director of Social Equity and Civic Engagement
Robin A. Gorman, executive assistant to the President

Deans

Yaw A. Asamoah, dean, College of Humanities and Social Sciences
Robert C. Camp, dean, Eberly College of Business and Information Technology
Nicholas E. Kolb, associate provost and dean, School of Continuing Education
Mary Ann Rafoth, dean, College of Education and Educational Technology
Michael J. Hood, dean, College of Fine Arts
John S. Eck, interim vice provost for Research and dean of Graduate Studies
Carleen C. Zoni, dean, College of Health and Human Services
Gary S. Stoudt, interim dean, College of Natural Sciences and Mathematics
Phillip J. Zorich, interim dean, Libraries
Valarie J. Trimarchi, dean, Punxsutawney Campus
Patricia D. Scott, dean, Northpointe Campus

Department Chairs

Germain P. Kline, chairperson, Accounting
Gary J. Dean, chairperson, Adult and Community Education
Cathy Dugan, chairperson, Advising and Testing
Phillip D. Neusius, chairperson, Anthropology
Richard Ciganko, chairperson, Art
Francis J. Condino, chairperson, Athletics
Carl S. Luciano, chairperson, Biology
John C. Woolcock, chairperson, Chemistry
Kurt P. Dutt, chairperson, Communications Media
William W. Oblitey, chairperson, Computer Science
Claire J. Dandeneau, chairperson, Counseling
Kim Weiner, chairperson, Counseling and Psychological Services
Dennis M. Giever, chairperson, Criminology
Albert S. Wutsch, director, Academy of Culinary Arts
Carmy Carranza, chairperson, Developmental Studies
Nicholas Karatjas, chairperson, Economics
Edward M. Levinson, chairperson, Educational and School Psychology
Gail I. Berlin, chairperson, English
Ibrahim J. Affaneh, chairperson, Finance and Legal Studies
Susan S. Dahlheimer, chairperson, Food and Nutrition
Charles R. McCreary, chairperson, French/German
John E. Benhart, chairperson, Geography and Regional Planning
Steven Hovan, chairperson, Geoscience
Elaine A. Blair, chairperson, Health and Physical Education
Xi Wang, chairperson, History
Stephen B. Shiring, chairperson, Hospitality Management
Mary E. Swinker, chairperson, Human Development and Environmental Studies
Jennie K. Bullard, chairperson, Industrial and Labor Relations
Randy L. Jesick, chairperson, Journalism
Sandra L. Janicki, chairperson, Library/Media Resources
Prashanth B. Nagendra, chairperson, Management
Varinder Sharma, chairperson, Marketing
Gary S. Stoudt, chairperson, Mathematics
Major Charles W. Ziegenfuss, interim chairperson, Military Science
Kustim Wibowo, chairperson, MIS/Decision Sciences
Lorraine P. Wilson, chairperson, Music
Michele A. Gerwick, chairperson, Nursing and Allied Health Professions
Sherrill J. Begres, chairperson, Philosophy
Devki N. Talwar, chairperson, Physics
Steven F. Jackson, chairperson, Political Science
Jennifer Rotigel, chairperson, Professional Studies in Education
Mary Lou Zanich, chairperson, Psychology
Stewart Chandler, chairperson, Religious Studies (Fall)
Theresa Smith, chairperson, Religious Studies (Spring)
Lon H. Ferguson, chairperson, Safety Sciences
D. Alex Heckert, chairperson, Sociology
Laura L. Delbrugge, chairperson, Spanish (Spring)
Joseph W. Domaracki, chairperson, Special Education and Clinical Services
Ronald Lunardini, chairperson, Student Affairs in Higher Education
Linda M. Szul, chairperson, Technology Support and Training
Barbara S. Blackledge, chairperson, Theater and Dance
Karen S. Rivoecchi, chairperson, Vocational Personnel

President,
Vice Presidents,
Deans, and
Chairpersons

2007-2008
Academic Year

The Program*
 Dr. Tony Atwater,
 President of the
 University,
 Presiding

Prologue

IUP Wind Ensemble Jack E. Stamp, Conductor
 "Flourish for Wind Band" Ralph Vaughan Williams
 "Irish Tune from County Derry" Percy Grainger
 "America the Beautiful" Ward/Dragon

The Processional

"Procession of the Nobles" Rimsky Korsakov
 "March Processional" Clare Grundman
 "Pomp and Circumstance" Elgar/Grundman
 "Concert Fanfare" Eric Ewazen

The Wind Ensemble Trumpet Section

"Sine Nomine" Vaughan Williams/Reed

Grand Marshal: Daniel C. Shively

Column Marshals: Anita C. Henry
 James D. Hooks
 Ronald Lunardini
 Ray L. Winstead

Alumni Greeters: IUP Alumni Association Board of Directors

Welcome

Tony Atwater

National Anthem**

Joseph M. Moeller
 Graduating Vocal Performance Major

Invocation

Melvin A. Jenkins M'92
 Pastor, Victory Christian Assembly Ministry

Introduction of Guests

Tony Atwater

Student Speaker

Beth E. Christy
 College of Natural Sciences and Mathematics
 Shelocta, Pennsylvania

Conferral of Honorary Degree

John J. Kopchick, Ph.D., M.D.
 Director, Growth/Obesity/Diabetes Section
 Edison Biotechnology Institute at Ohio University
 Athens, Ohio

Commencement Remarks

Dr. Kopchick

Conferring of Degrees

Tony Atwater

David Werner

Interim Provost and Vice President for Academic Affairs

John S. Eck

Interim Vice Provost for Research and Dean of Graduate Studies

Granting of Military Commissions

Major Charles W. Ziegenfuss

Presentation of Senior Class Gift

Craig D. Faish
 President, Student Government Association

Alumni Association Greetings

David L. Reddecliff '82
 President, IUP Alumni Association

Alma Mater***

Mr. Moeller

The Recessional

"Crown Imperial" Walton/Duthoit

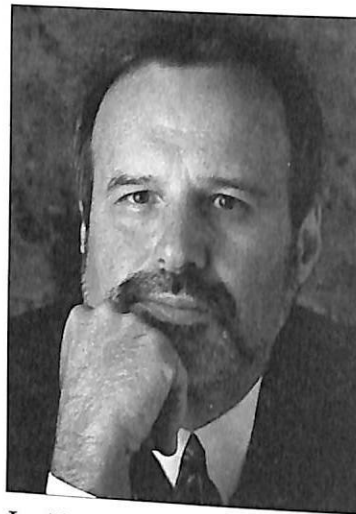
Graduates and Guests: Please remain seated until the platform party and faculty have recessed. At the conclusion of this program, please proceed to the department ceremony you wish to attend. The location of each department ceremony and a campus map can be found at the back of this program.

* Please do not walk onto the field to take pictures during the program.

** Graduates, guests, and faculty are requested to join in the singing of the National Anthem.

*** Graduates, guests, and faculty are requested to join in the singing of the Alma Mater.

Commencement Speaker John J. Kopchick



John J. Kopchick '72, M'75, is an internationally recognized leader in the growth hormone (GH) field. Since 1987, he has held the Milton and Lawrence H. Goll Eminent Scholar Professorship in Molecular and Cellular Biology and directs the Growth/Obesity/Diabetes Section of the Edison Biotechnology Institute at Ohio University in Athens. He also is professor in the Biomedical Sciences Department in the College of Osteopathic Medicine at Ohio University.

In 1989, Dr. Kopchick and his group were the first to discover and characterize the molecular aspects of GH antagonists, an accomplishment for which he and Ohio University were awarded several U.S. and European patents. He was instrumental in founding a company, Sensus, that applied his laboratory discovery to development of a drug that has been evaluated in clinical trials for acromegaly, a chronic disease caused by excessive secretion of GH by a pituitary adenoma. Dr. Kopchick has been involved in the start-up of two additional biotechnology companies.

Born in Punxsutawney, Pennsylvania, Dr. Kopchick spent most of his early years in Indiana, Pennsylvania. He received both his bachelor's degree in biology and master's degree in biology and chemistry from Indiana University of Pennsylvania. In 1975, he enrolled in the Graduate School of Biomedical Sciences, University of Texas System Cancer Center in Houston and began research under the supervision of Dr. Ralph Arlinghaus, professor and chairman of M. D. Anderson Cancer Center's Department of Molecular Pathology. He was awarded his Ph.D. in 1980.

After completing his Ph.D., Dr. Kopchick continued research training as a postdoctoral fellow at the Roche Institute of Molecular Biology. He then spent almost five years at Merck Sharp & Dohme Research Laboratories. At Merck, he developed a system built around cloning and expression of GH genes, which he continues to study as director of the Edison Biotechnology Institute.

In 2005, Dr. Kopchick, in collaboration with the AMVETS, set up a Diabetes Research Institute in the Edison Biotechnology Institute at Ohio University. The project is devoted to training undergraduate students in the diabetes research area. The students must have either served in the armed forces or have had parents or grandparents who served in the armed forces. To date, fourteen students have been trained or are currently being trained. Of the ten students who have graduated, four are in medical school, four are in graduate school, one is in nursing school, and the other is applying to graduate school.

Dr. Kopchick has published more than 240 scientific articles and 220 published abstracts in the area of growth, obesity, and diabetes. Twelve patents have been granted based on his work, with several more pending.

Before becoming president of Indiana University of Pennsylvania, Tony Atwater served as provost and vice president for Academic Affairs at Youngstown State University in Ohio. In this capacity, he oversaw academic programs, academic policy, and academic assessment, while providing leadership and strategic direction to approximately 750 faculty members serving six academic colleges, the School of Graduate Studies and Research, and the Library. He earned a Ph.D. degree in communication research from Michigan State University (1983), where he was the recipient of a competitive doctoral fellowship. He completed postdoctoral study in the Department of Communication at the University of Michigan (1989). President Atwater earned a Bachelor of Arts degree in mass media arts (*magna cum laude*) from Hampton University (1973). He is the recipient of three graduate certificates in higher education administration from the Harvard Graduate School of Education.

President Atwater is a Ford Foundation Postdoctoral Fellow, and the focus of his research has been news selection behavior in the mass media. He has published approximately thirty refereed journal articles on the subject. Earlier administrative assignments included roles as dean of the College of Professional Studies and Education at Northern Kentucky University, chairperson of the Rutgers University Department of Journalism and Mass Media, and special assistant to the provost at the University of Connecticut. He also served as associate vice president for Academic Affairs at the University of Toledo.

President Atwater has assumed significant community leadership roles throughout his career. These efforts have included serving on the (Kentucky) Governor's Task Force on Youth and Substance Abuse Prevention, on the Board of Trustees of the Northwest Ohio Public Television Foundation, and as a member of the 2000-2001 delegation of Leadership Cincinnati. He also served as a member of the Advisory Board of KeyBank (Northeast Ohio Region) and as a board member of the Youngstown Business Incubator. He is a past president of the Association for Education in Journalism and Mass Communication.

During his tenure at IUP, President Atwater has assumed several leadership roles. He is a member of the Pennsylvania Economy League of Southwestern Pennsylvania Board of Directors, the International Student Exchange Program Board of Directors, and the American Council on Education's Commission on Lifelong Learning. He is a member of the Indiana County Chamber of Commerce Board of Directors, the Indiana County Center for Economic Operations, Rotary Club of Indiana, the Greater Indiana Revitalization Steering Committee, and the Indiana County Tourist Bureau Board.



President Tony Atwater



President Atwater's wife, Dr. Beverly Roberts-Atwater, received both Ph.D. and medical degrees from Michigan State University and is in private practice as a psychiatrist.

Distinguished Faculty Award for Teaching

Richard Lamberski

For some twenty-seven years, Richard Lamberski, recipient of the 2008 Distinguished Faculty Award for Teaching, has distinguished himself as an exemplary mentor and teacher. A professor in IUP's Department of Communications Media, Dr. Lamberski has earned a reputation as an innovative educator, trusted advisor, and valued colleague.

As the driving force behind the department's successful internship program, Dr. Lamberski has worked tirelessly to connect student academic studies with real-world experiences. He has cochaired the University Task Force for Internships and Experiential Education and has been broadly called upon to share his expertise in this area, including work with the university's Council of Trustees.

During his tenure at IUP, Dr. Lamberski has been active with various fraternal organizations and student professional societies, utilizing the royalties from his own workbook and manual sales to create and support recognition awards for student professional achievement and meritorious service.

As noted by one colleague, "He changes lives, creates a desire for learning, and develops a love for the discipline within the department's students. Richard is without peer...an encourager and an enabler."

Distinguished Faculty Award for Research

Lynn Botelho

The recipient of this year's Distinguished Faculty Award for Research believes that undergraduate education must be provided by a scholar who is on the cutting edge of research. Throughout her eleven years at IUP, Lynn Botelho has fulfilled this role by maintaining an active and innovative research agenda with her work on the elderly in early modern England and the trans-Atlantic world. She has published numerous monographs, essays, peer-reviewed articles, notes, and reviews. Because of her scholarly activities, Dr. Botelho is honored with the 2008 Distinguished Faculty Award for Research.

Dr. Botelho has served in the History Department at IUP since 1996. While maintaining her teaching and service activities, she has published six books and ten articles, presented papers at professional conferences every year, organized professional conferences, pursued and received numerous research awards and grants, and served on an editorial board. One of her most profound works is her book *Old Age and the English Poor Law, 1500-1700*. This is the first book to examine the elderly in early modern England. She found that it was not the intent of the poor laws to provide complete support for the aged poor, so they had to devise their own financial initiatives to survive through their final years. Dr. Botelho has and continues to publish various works related to this research interest, including a coauthored book entitled *The History of Old Age*. This book has been simultaneously published in England, North America, and Germany, where it was a Book of the Month Club selection.

Dr. Botelho furthers her scholarship by mentoring IUP honors students, who are now pursuing "fully funded" doctoral degrees at the University of Wisconsin, Ohio State University, and Yale University. Her strong commitment to research and her impact on students and peers make her more than deserving of the Distinguished Faculty Award for Research.

Patricia Villalobos-Echeverría

Patricia Villalobos-Echeverría, recipient of the 2008 Distinguished Faculty Award for Creative Arts, has achieved national and international recognition for her creative output.

Over the past eighteen years, Professor Villalobos-Echeverría has been included in more than sixty group shows and has been featured in seventeen solo exhibitions. Many of these exhibitions have been of an international status, with Professor Villalobos-Echeverría representing Nicaragua in the V Bienal de Artes Visuales/Biennial of Visual Arts Nicaragua in 2005, as well as in Cuerpos sin Bordes, Ecuador, in 2007.

Professor Villalobos-Echeverría has also been the recipient of numerous awards and fellowships, including two Pennsylvania Council for the Arts Individual Artist Fellowships, in 2000 and 2002. She has been awarded five residencies: from Carnegie Mellon University, the University of Iowa, the Vermont Studio Center, and MacDowell Colony in Peterborough, New Hampshire, and a Creative Heights residency at Artist Image resource in Pittsburgh.

In addition, Professor Villalobos-Echeverría has taken part in numerous academic conferences as a presenter and panelist, most recently speaking at the "Altering Substrates" panel presentation at the ninety-fifth annual College Art Association Conference in New York, N.Y. She has been an invited lecturer and/or panelist at more than fifteen universities and art centers and has been included in three books currently in print.

Calvin Masilela

Calvin Masilela, recipient of the 2008 Distinguished Faculty Award for Service, has provided IUP with ten years of outstanding service activities.

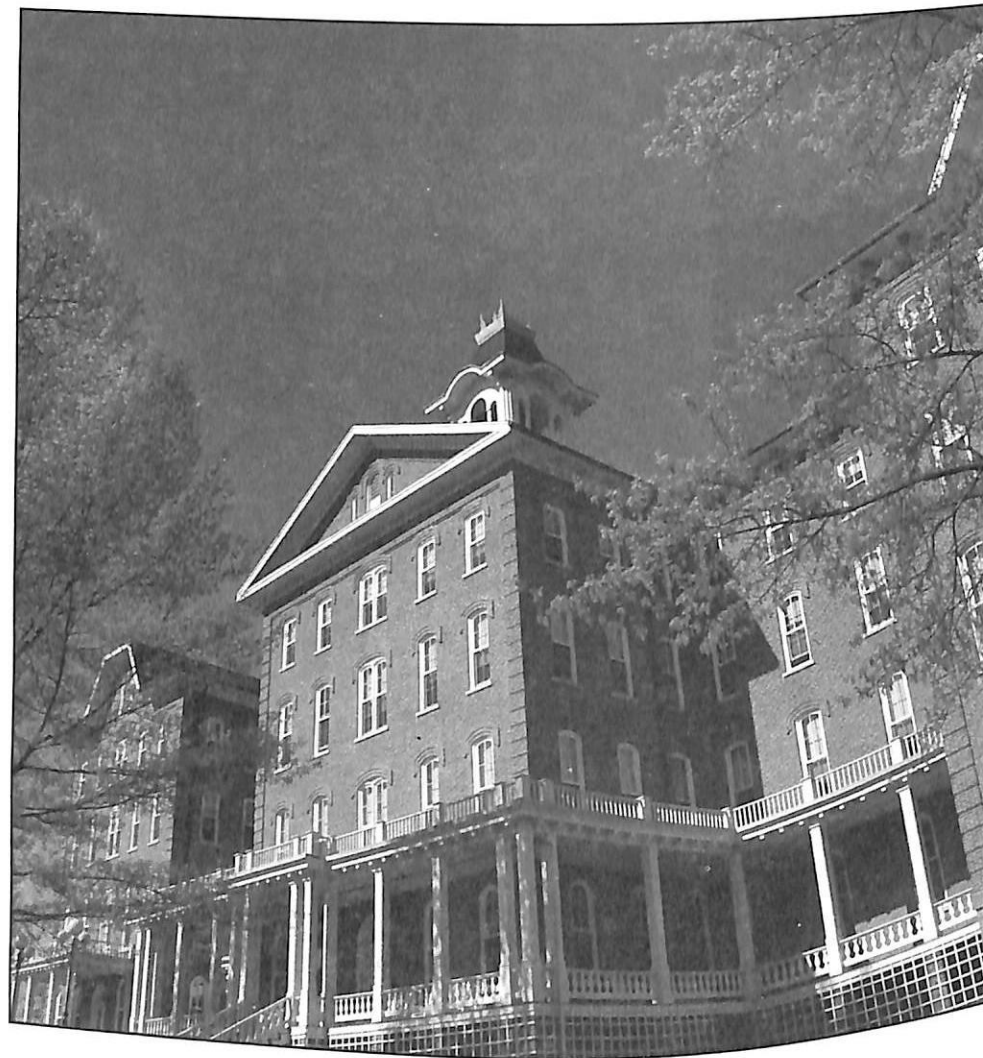
Since Spring 2005, he has served as chairperson of the Student Cooperative Association Board, which disburses \$6.2 million a year to support Co-op Services and facilities, including the student union, intercollegiate athletics, the *Penn*, and OnStage, just to name of a few. As chairperson of the Co-op board, he has overseen the overhaul of human resources policies and bylaws and completion of an economic impact study on the local and regional level.

Dr. Masilela has also served on the University Planning Council since 2004 and was a member of the Enrollment and Management subcommittee analyzing enrollment trends at IUP. In August 2003, Dr. Masilela obtained a competitive grant, funded at \$220,000 per year, that made IUP one of three universities in the commonwealth to host the Ronald McNair Postbaccalaureate Achievement Program. The purpose of the McNair program is to prepare academically promising undergraduate students who come from low-income, first-generation, and minority backgrounds for graduate studies so that they can eventually earn doctoral degrees. Since IUP's first cohort was selected in 2004, a total of seven McNair scholars have participated in the program. Of program alumni, eleven are in master's programs, four are in M.A./Ph.D. programs, one is pursuing a J.D., and six are enrolled in Ph.D. programs. His original proposal was again funded in 2007.

Distinguished Faculty Award for Creative Arts

Distinguished Faculty Award for Service

The University



With its original 1875 building still standing at the heart of its campus, Indiana University of Pennsylvania has a long tradition of academic excellence and receives frequent accolades, including designation as one of *The Best 366 Colleges* in the 2008 edition of a Princeton Review book by that name. The university provides an intellectually challenging experience to fourteen thousand students at three campuses, all easily accessible from Pittsburgh and the Middle Atlantic region. IUP is the largest member institution of the Pennsylvania State System of Higher Education and the only one authorized to confer doctoral degrees.

Academic offerings include more than one hundred undergraduate majors with a variety of internship and study abroad programs, more than forty master's degree programs, and ten doctoral degrees. Unusual opportunities for research at all levels and the Robert E. Cook Honors College provide special challenges for academic growth. The variety and quality of instruction are characteristic of a big university, yet at IUP, close, one-to-one relationships develop within the teaching framework, and a strong sense of community prevails.

Indiana University of Pennsylvania is an equal opportunity/affirmative action employer committed to excellence through diversity.

Asterisks denote Latin honors for first-time bachelor degree candidates as follows:

- *** Summa Cum Laude 3.75 to 4.00
- ** Magna Cum Laude 3.50 to 3.74
- * Cum Laude 3.25 to 3.49

Asterisks denote non-Latin honors for associate degree candidates as follows:

- *** With Highest Honor 3.75 to 4.00
- ** With High Honor 3.50 to 3.74
- * With Honor 3.25 to 3.49

Graduation honors are tentative and are based upon the cumulative grade-point average after conclusion of the student's next-to-last semester. Final honors for these graduates will be noted after final cumulative grade-point averages have been calculated.

Averages are determined on the basis of the following: 4=A; 3=B; 2=C.

The appearance of a name on this program is not a valid indication of graduation. The diploma of the university and an official transcript, signed and sealed by the proper officers, provide authentic testimony to the conferring of a degree.

The following students have completed their first bachelor's degree program with a perfect 4.0 grade point average:

Kari Lynn Andren
Shannon Noelle Baldwin
Jordan Luke Berkebile
Brenden M. Burkholder
Cheryl Ann Cercone
Rebecca M. Chamberlin
Wee Liang Chew
Diana Cochran
Samantha Erin Collinash
Ashley Brooke Covert
Kacee Erin Dale
Catherine Laura deCoen
Liesel Ann Dorrow
Susan Marie Dotts
Jeanna Froud
Megan J. Genchur
Danielle Marie Glass
Erin Lynn Greenawalt
Olivia Fay Halo
Janelle Leigh Hegland
Gabrielle Rhea Hoffman
Erica Allison-Brawnallynn Hogan

Jessica Cara Hohman
Laura B. Kingsbury
Wilma Loreen Link
Tegan Jean Medico
Jarib G. Misosky
Ryan S. Montgomery
Jennifer Lindsay Moore
Kristin Ann Nasser
Elizabeth Grace Parks
Mark A. Petersen
Katilyn Marie Reed
Rebecca Lynn Schock
Chad Shelly
Kristen Nicole Sinisi
William R. Smith
Kristen J. Taddie
Nicole Denise Talento
Michelle Marie Ulanowicz
Lauren B. Venturino
Sarah A. Wennogle
Bobbie Jo Zapor
Rebecca Lee Zimmerman

Candidates for Degrees

4.0 Grade Point Average Bachelor's Degree

Eberly College of Business and Information Technology

Robert C. Camp, Dean (beige tassels)

Accounting

Bachelor of Science

Sean Michael Barber
Jessica Ray Blackwell *
Stacey Ann Brehun **
Sharon Lee Brozewicz *
Courtney M. Budosh
Kristina Mari Callan
Nathan Robert Coleman
Chishamiso Dube
Jamie Jason Fischer
Jeanna Froud ***
Erin Elizabeth Gressick ***
Lindsey Nicole Grove **
Eric R. Hamme ***
Ryan M. Hutzler
Lisa Marie Kinter
Amie R. Lake *
Roxanne Lee Lanning
Chelsea Melissa Lee **
Kristine Nicole Mershimier *
Melissa Sue Mikeska *
Joseph G. Mussey *
Matthew Thomas Nicholson **
Mark A. Petersen ***
Thea Penny Pyle
Xavier A. Sanchez
Nicole Elizabeth Schlegel
Christopher Anthony Scianna *
Lisa Janelle Shaffer *
Sean Thomas Strauman **
Dara Elinor Swank *
Kristeen D. Toy
Jeffrey Joseph Uveges
Ryan Patrick Wall ***
Monica Elaine Watt *
Brittany Marie Wilson ***
Rachel Dawn Wingert

Accounting/Pre-Law

Bachelor of Science

Theresa Lynn Bolsover

Business Education

Bachelor of Science in Education

Kellin Ann De Master ***
Jared Arthur Lombardi
Jessica A. Schneider **

Business Technology Support

Bachelor of Science

William Edward Collins
Bryan Michael Oxendale
Zachary E. Panchik

Business/Accounting

Associate of Arts

Deborah Lynne Miller **

Finance

Bachelor of Science

Aaron Christopher Brochetti
Bethany Dianne (Metz) Buzard
Dylan Michael Dluhos
Jonell Eve Feulmer ***
Bryony Leah Foltz **
Samira A. Hassan ***
Luke Solon Park Hingson
Allison M. Kuhn
Andrew James McCombie
Melissa Sue Mikeska *
Bradley M. Miller *
Carissa M. Morris
Joseph G. Mussey *
Anthony Edward Panizzi
Robert Patrick Roche
Erin J. Sweeney
Matthew P. Ulkins *
Adam K. Unrue **
Hansen Dharma Wijaya
Jennifer Marie Witherow ***

Finance/Pre-Law

Bachelor of Science

David M. Ober

Human Resource Management

Bachelor of Science

Scott Yoshi Bryson **
Gregory Ryan Crossland
Amaechi Ubaka Ezekoye
Lacy Lee Manges *
Kimberly Rae Robertson *
Michael John Rozum *
Zachary L. Smith
Ashleigh Joy Stutzman *

International Business

Bachelor of Science

Ryan S. Gallagher *
Janelle Leigh Hegland ***
Lilia Kisluk ***

Management

Bachelor of Science

Kurt W. Frank

Management/Entrepreneurship and Small Business

Bachelor of Science

Pierino Delli Bovi, Jr.
Eric Michael Bowers **
Matthew Edward Conlon
Kathryn Beam Dagnal *
Jay D. Giraldo
Vincent Angelo Minella
Joshua Bema Ratmoko *
Lydia E. Robinson
Holly Nicole Souden
Daniel Paul Staerk
Aaron Michael Stewart
Andrea Christine Stracione
Paul C. Valdiserri **
Nicole Marie Watson
Evan William Wright

Management/General

Bachelor of Science

Anthony Almond IV
Aimie Christine Altieri *
Tyler C. Auker *
Mallory Renee Blaniar
Diane L. Christian **
Mark Alan Duddy
Ian C. Fearon
Robert E. Ferraro **
Shea E. Frola
Kimberly Ann Giebel
Rochelle Lee Groholski
Amanda Lea Grove
Joshua J. Herlinger
Patrick James Hildebrand
Jennifer Ann Hornyak *
Micah Jeffrey Kelley ***
Jessica Anne Long
Marc R. Matsey
Ashley Marie Molanick *
Michael Henry Noss **
Christine M. Padula *
Anthony Joseph Pascarella
Jamie Lynn Pierson
Thomas Andrew Polenik
Brian Richards
Jaime L. Russo *
Brian J. Scalise
Christan Renee Shaffer *
Lucas D. Stewart
Brienn Thomas
Christopher F. Williams
Bryan Micheal Wurst
Caitlin Marie Zollner ***

Management/General/Pre-Law

Bachelor of Science

Corey Allen Heiks

Management/Operations

Bachelor of Science

Robert Wilson Chilton III *

Ryan Michael Hill

Management Information Systems

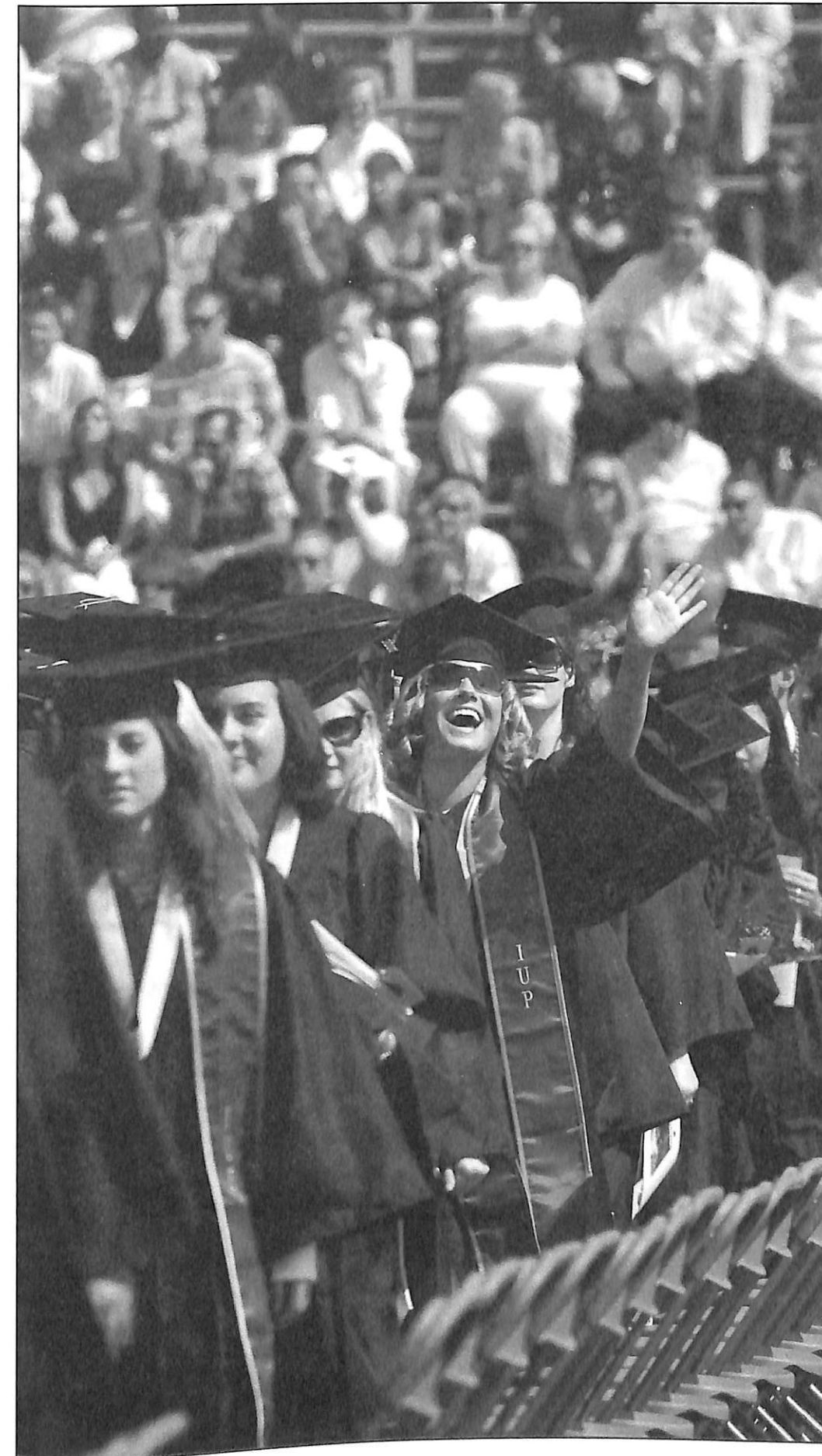
Bachelor of Science

Wee Liang Chew ***
Eric Joseph Cuddy ***
Ryan Christopher Easton ***
Max Ray Houseknecht, Jr. *
Nikolas R. Knueven
Garrett J. Liebenguth
Brian Michael McCormick
Robert W. Robshaw
Tabitha G. Wiest **

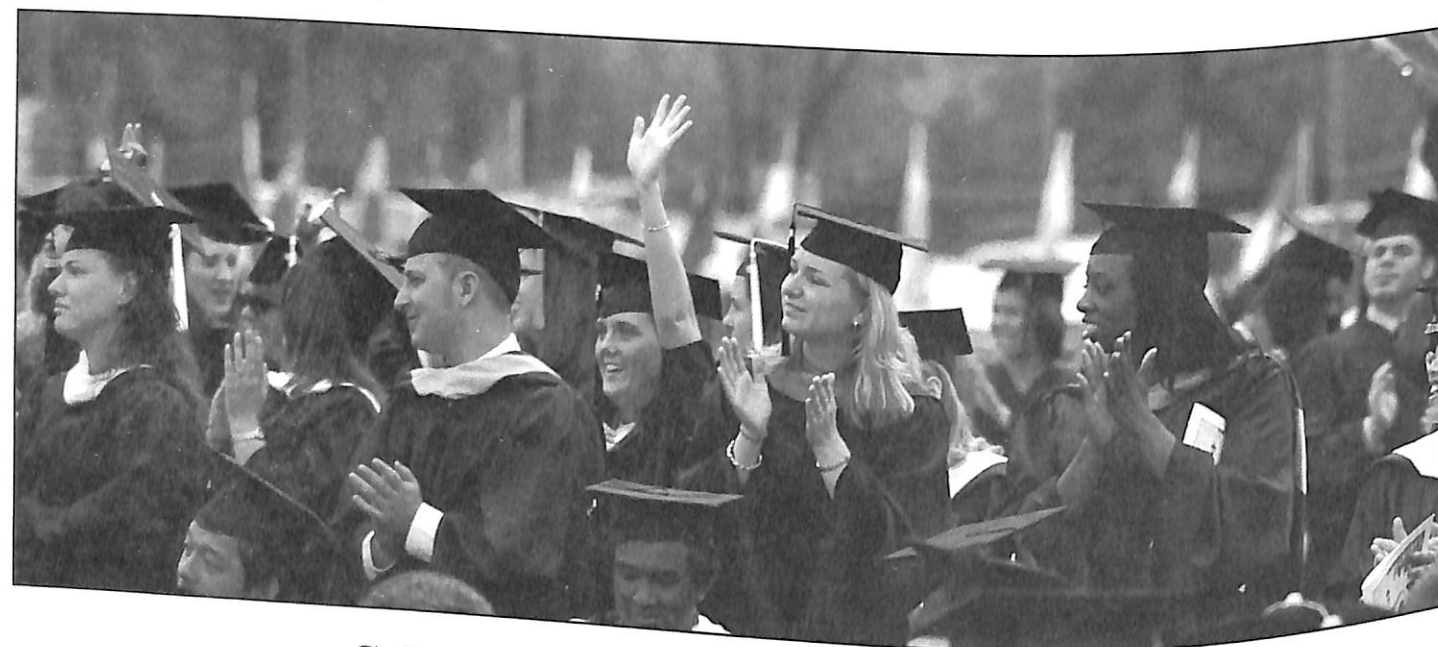
Marketing

Bachelor of Science

Lindsay Kaetlin Albrecht
Douglas E. Bannon, Jr.
David Carville Bennett, Jr.
Patrick Daniel Blasi
Jillian Kate Brennecke
Thomas Edward Brighton III
Alexandra Marie Buckman
Nathan Luke Bunyak
Kelly Anne Carpenter *
Elizabeth Jane Casey
Nicole Alenn Colombo **
Ronda Sue Craig **
Jennifer Ann Csanyi
Samuel Vincent DeBona *
William L. Dinsmore, Jr.
Ashleigh M. Dunaway
Daniel Bradford Dunlap **
James Walter Endlich
Daniel Quinn Flanagan
Lyndsey Fredericks *
Camille Jo Galmarini
Sharmaine L. Gamble
Robert Leonard Gates, Jr. *
Marissa Ann Gillespie **
James Coleman Green III **
Jason R. Greene
Richard M. Havrilla *
Brittany Yvette Jeffries
Jana Elizabeth Kalish *
Christopher Alan Kanski **
Lesa Danette Kendall **
John Celestine Lang, Jr.
Lindsey Joy Laughlin *
Stephanie Anne Lockcuff ***
Shawn Michael Maloskey ***
Jill Melissa Marron *



Andrew Michael Melhorn **
Jennel Renee Mitchell **
Davena Marie Monstrola **
Nicole Ann Mort
Jeffrey Michael Murlatt
Jerome Stuart Myers
Gary Andrew O'Data
Katelyn Rose O'Leary
Anthony Joseph Pascarella
Lisa Rose Payton
Kyle J. Ranney *
Amber Louise Ream
Casey J. Robinson *
Clifford John Schademan *
David R. Schumacher *
Dustin Alexander Slezickey
Jessica Lynn Stavinski **
Shannon Marie Stormer **
Matt Sullivan
Brett Allen Supan
Matthew Brandon Vandervort
De Anna J. Vaughn
Lakin Nicole Walp
Audrese L. Zimmitt
Lindsey Marie Zofchak



School of Continuing Education

Nicholas E. Kolb, Dean (white tassels)

General Studies

Associate of Arts

Cory Paul Brocious
Joseph A. Cuffia
Adam Gregory Hartwick
Elizabeth Rae Hauser ***
Clayton M. Meals †

General Studies

Bachelor of Science

Joshua David Adamchik *
Bridget Dawn Burkholder
William Henry Donnelly *
Cole R. Fernandez *
Sharlmaine April Franklin
Jennifer Renee Hause
Tamera F. Meyer *
John P. Price III
Angela Renee Rich
Robert Edward Siock
Lindsey Dawn Tapper-Anderson
David Samuel Williams *

† Awarded Posthumously

College of Education and Educational Technology

Mary Ann Rafoth, Dean

(light blue tassels)

Communications Media

Bachelor of Science

Matthew Robert Allen
Nicky J. Allison ***
Timothy A. Becker
Megan Ashley Berner
Adam M. Borodach ***
David Edwin Coffey *
Jack Finigan Davis
Mark Dushok †
Anne Kathleen Egan ***
Nicholas A. Fedinick *
Edmond J. Flocco
Nell Elizabeth Fultz
Jennifer L. Helman
Robert Conrad Kozletsky
Lori Lynn Lamberski ***
Mallorie Alyssa McRea
Stephanie Jo Miller
Ryan S. Montgomery ***
Laurel Anne Moore
Erica Lauren Petruk *
Sean Brian Riffle
Amber Nicole Schulman **
Carolyn Marie Sigg
Lauren Alexandra Spitzer
Stuart Justin Steimer *
Courtney Brooke Tokarczyk
Robert John Vecchiolli, Jr.

Disability Services

Bachelor of Science

Jason E. Clabaugh *
Lily Nicole Giancola *

Early Childhood Education

Bachelor of Science in Education

Shannon Noelle Baldwin ***
Carrie Lynn Bellas ***
Jessica L. Denkowski *
Amanda Freeman *
Megan J. Genchur ***
Breanna Lynn Genevro **
Laura Louise Kitchen ***
Jaime Rebecca Moyer ***
Angela Mae Myers ***
Katilyn Marie Reed ***
Jessica Catherine Severo **
Kelly J. Shaffer **
Kelly Lorain Shusko **
Kristen Ann Straub ***
Kristina Marie Swarts **
Brittany Nicole Taylor ***
Cynthia Eileen Collins Wilson **

Education of Deaf and Hard of Hearing Persons

Bachelor of Science in Education

Amy Elizabeth Fiedler **
Kimberly Jean Giaquinto *
Allison Leigh Paruch *
Dana Jaclyn Spohn *

Education of Exceptional Persons

Bachelor of Science in Education

Kacee Erin Dale ***
Patricia E. Kozimer **
Nicole Lang **
Jasmine Celia Ruigrok **
Tyler R. Stokes *
Linda A. Stupic **
Tomi Lynn Yost *

Elementary Education

Bachelor of Science in Education

Aaron David Allen *
Jordan Luke Berkebile ***
Dustin H. Best *
Amber Maree Bottaro **
Stacey L. Brozell ***
Danielle Lynne Butera **
Wendi C. Cappel *
Cheryl Ann Cercione ***
Rebekah Ann Clark ***
Diana Cochran ***
Ashley Brooke Covert ***
Joan Marie Darno ***
Erin Marie DeStefano *
Bernadette Padilla Donnelly ***
Susan Marie Dotts ***
Meridith Bethany Doyle ***
Ashley Adaire Duncan *
Connie L. Edmiston **
Melissa Anne Edmunds ***
Danielle Lindsay Elliott ***
Lindsay Marie Fondrk
Christine Noel Galbraith **
Danielle Marie Glass ***
Lee A. Hagan **
Olivia Fay Halo ***
Jan M. Harangozo ***
Melissa Faye Higgins ***
Erica Allison-Brawnallynn Hogan ***
Lori Prim Howe ***
Danielle Nicole Hutton ***
Julie A. Joyce **
Brian Carl Kehm ***
Trisha Anne Kempf **
Patrice A. Krug **

Greta Mae Kuzilla ***
Courtney Louise Lamb ***
Kara Renette Laux ***
Baron Ty Leonard *
Anelia Theresa Litavish ***
Michelle Catherine McDonough *
Kelly A. McKee ***
J. Mark McLaren, Jr. **
Michael B. McMahon *
Erik Thomas Meredith ***
Danielle M. Milchak *
Christopher M. J. Miller
Amanda K. Moreton ***
Maria Lillian Myers *
Kristin Ann Nasser ***
Regina Marie Natale ***
Tasha M. Pascarella *
Rebecca May Petro ***
Dawn Michelle Pfahl **
Melissa A. Prilla ***
Lindsay Nicole Rahl **
Sheena Marie Ricci ***
Christie Lee Rodgers ***
Ashley Nichole Roudybush ***
Crystal L. Sachs ***
Jessica Lee Santoro *
Rebecca Lynn Schock ***
Amanda Lyn Schubert **
Robert K. Sherretz **
Jeremy Paul Shock ***
Mandi Leigh Shoemaker **
William R. Smith ***
Kayla Marie Snyder ***
Leigh Janette Spudich *
Katie Marie Stegman **
Daniel Reed Steinhilber ***
Heather Ann Szallay ***
Nicole Denise Talento ***
Alexandra A. Titov ***
Allison Sue Tremblay ***
Barbara Louise Uebing **
Michelle Marie Ulanowicz ***
Jessica Lynn Varner ***
George Walter Vogetley **
Jammie Lynn Welton **
Julie Anne Westrick ***
Jessica Lynn Wolf *
Christina V. Wood ***
Angela L. Wynn *
Rebecca Lee Zimmerman ***

Elementary Education/Urban

Bachelor of Science in Education

Michael Vincent Beal *
Zachary Leigh Benkovitz **
Hali Ann Bowser ***
Lauren Ann Brittingham *
Joshua Neal Brown ***
Catherine Laura deCoen ***
Laura Nicole Friedlander *
Kelley Marie Jonnet **
Kelly Lynne Lambrecht **
Amanda Katherine Lee *
Jennifer C. Violi ***

Speech-Language Pathology and Audiology

Bachelor of Science in Education

Sarah Wells Benson *
Brittany Lee Breitweiser ***
Julia Anne Churba ***
Jamie Lynn Finelli *
Melissa Anne Flacinski *
Erin Lynn Greenawalt ***
Jaime Lynn Hersh ***
Ashley Lynn Keene *
Kristen Nichole Laszlo **
Nicole J. Lombardo
Holly Elizabeth McMillan ***
Amanda B. Morningstar **
Courtney Lynn Neal *
Anne Alyssa Popovich ***
Laura Elizabeth Salwocki **
Lora Jean Saxfield ***
Sara E. Schell
Justine Claire Tanner **
Kelly Patricia Tirney
Lyndsey Nicole Uhron **
Janelle A. Ulrich **
Sarah Beth Weiss *

Vocational-Technical Education

Bachelor of Science in Education

George Patrick Kirk
Aaron Jacob Kline
Vincent P. Speer *

† Awarded Posthumously

College of Fine Arts

Michael J. Hood, Dean (brown tassels)

Art Education Bachelor of Science in Education April Mae Fallon * Katie E. Hanlon * Danielle Nicole Hewston *** Eric Raymond Hoover ** Michelle Renee Lasko ** Rebecca Ann Lebda * Desiree Marie Palermo *** Bridget Anne Quirk *	Music Bachelor of Arts Jessica Cara Hohman *** Joseph Michael Moeller Scott Michael Pribanich * Jason L. Shaffer, Jr. *
Art Studio Bachelor of Fine Arts Jason Thomas Brown Aimee Michelle Manion ** Alisha Rae McCurdy * Bridget Lee Nowik Rhonda Jean Parker Pegg ***	Music Education Bachelor of Science in Education Matthew Allan Anderson Eric Michael Bentz * Mitchell Theodore Custer ** Michael Ryan Dooley ** Liesel Ann Dorrow *** Courtney Anna Durlin * Jolanda Honri Estes ** Emily Susanne Goll ** Rachel Lyn Griffin *** Sarah Lynn Heim ** Keith Kuckenbrod *** Holly Joanna Lehman * Cheryl Leone Medley *** Brett Allen Rynhart ** Larry Jonathon Sarvey ** Timothy Brandon Sarvey ** Charles Michael Shipman, Jr. *** Andrea Dorothy Strong * Andrew Whisler *
Art/History Bachelor of Arts Joanna April Martinec ** Chad Robert Santik	Music Performance Bachelor of Fine Arts Justin James Beish
Art/Studio Bachelor of Arts Nicole Lindsey Adams Richard Raymond Decker Jessica Kay Evans *** Kyle Allen Huggins ** Nathaniel Ross Ibarguen Kaitlin Renee Kapustik Heather Rose Klenke Lauren Ashley Lippello Peter John Martin Stephen Anthony Nachreiner Stephanie A. Strazdus Amanda Avery Walter ** Bryan Thomas Welsh	Music/Theory and Composition Bachelor of Arts Michael Ryan Dooley ** Gregory Charles Macfarlane ***
Interdisciplinary Fine Arts/ Music Theater Bachelor of Arts Anita Louise McFarren **	Theater Bachelor of Arts Caitlin R. Antram *** Sarah C. Fritz * Seth Ryan Golden Walter Clay Gray IV * Bridget Claire Halloran Natalia Maria Kaniasty * Kelly Nicole McCaughan Rachel L. Nelson *** Andrew M. Osborne Jason Anthony Singer ** Ashley Victoria Tait * Ashley Rose Valente Timothy C. Zeddies **

College of Health and Human Services

Carleen C. Zoni, Dean (green tassels and maroon tassels)

Child and Family Studies Bachelor of Science Nichole Marie Antonucci Marlene Bayer * Rachel K. Crossan Meghan Marissa Gardner Brooke Gusst Amanda Michelle Hedash ** Jennifer Renee Hine Katelyn Elaine Ickert ** Wilma Loreen Link *** Jason Michael Mangold *** Stephanie Elizabeth McClellan Aimee Beetlestone Nevin ** Kristin Nicole Nosel Lindsay April Olivieri ** Randi Katherine Pequignot ** Renee M. Pritchard ** Bobbie Jo Rice Nicole S. Sensabaugh Richelle A. Watkins Anna Marie Woodcook Ashley Nicole Worthly Elizabeth Joyce Wright	Samantha K. Jones * Nicole Marie King Jonathan Robert Koestel ** Tyler Gerard Kopta Justin Andrew Kreger * Joshua James LaFleur Jeffrey James LeCorchick Edward J. Lyons Peter Alward Makstutis Brandy Nicole May *** Ryan David McConnell * Shawn Timothy McMickle Aaron M. Mehall ** David Andrew Moreau Mandy D. Moser *** Shaun Louis Murphy Jennifer Rose Muzika * Matthew J. Nave Colin Macon O'Shea ** April Lyn Otto *** Casey Adam Pagliarini Ashley Marie Pampena Joseph Michael Peters Samantha Jo Pistorius Stephen Michael Renwick * Matthew D. Restori Emily Sumner Rice * Giani Nicholas Ruffo Ralph George Rush, Jr. Michael Jay Santeck Jonathan Lawrence Sarazen Carli Nicole Schmidt * Thomas Christopher Schneider Douglas Matthew Schreiber ** Kelly L. Scott Brent Gregory Shaffer Brennon Anthony Shall Andrew Peter Shaub *** Michael G. Shields ** Seth Matthew Siniawski Paul J. Staso * Brandon Robert Stevanus Jason David Sunseri Derek Floyd Swope *** Robert J. Trimble Lindsey June Wall ** Dane Adam Watt Jeremiah David Weiland Brandon Micheol Zubasic **	Alyssa J. Bassaro *** Daniel Thomas Coulehan * Sara Elizabeth Craft * Viktoria Troy Fox * Bridget Anne Gaffney Timothy Joseph Giles ** Jonathan Andrew Guthrie Craig J. Leichter Joseph D. Link ** Timothy W. Martin, Jr. * Elena R. Mazzoni ** Amber Marie Noel Melissa R. Parelli * Kevin David Pickering Colin Wayne Scott ** Kristen Nicole Sinisi *** Justin Burr Sprinkle Jennifer Ann Steiner Thomas Peter Voorhees II
Criminology Bachelor of Arts Chad Daniel Allen Michael Q. Appolonia * Michael B. Bakaysa, Jr. Ashley Lyn Baun Rachel Alyse Bayer ** Todd C. Beas ** Cassandra L. Belschner Sarah Beth Bird * Margaret L. Brandle Justin Allan Calisti Michael James Cavaliere Christopher Emory Crooks Mark Vincent DeCaria Kevin Robert Dehn Adam Mack Dobies Megan A. Eilrich Lawrence Anthony Eyrolles Steven John Fagan *** Andrew J. Ferguson Lauren Marie Fischl Kristi Lynn Flannery Scott Lewis Garland ** Caleb P. Geidel Michelle Renee Harrington Jarred S. Hetrick Omari Manu Jackson Jared J. Janocha ***	Family and Consumer Sciences Education Bachelor of Science in Education Rachael Gjerde Dausch ** Mary Beth Edmiston ** Sasha L. Gregory *** Alison R. Hess ** Whitney Anne Hile ** Gabrielle Rhea Hoffman *** Larissa Christine Lucas ** Megan D. McNaughton * Ann Elizabeth Moncrief * Chelsea Danielle Rawlings ** Ashley Elizabeth Rubal Kathryn Ella Shortuse *** Leah J. Soroka *** Jessica Lynne Stintzi ** David Bruce Weikel * Tara L. Wenrich **	Health and Physical Education Bachelor of Science in Education Chelsea M. Beach Nicholas R. Buterbaugh Nicole Danielle Decker * Brenton T. Ditchcreek * Kristen Mary-Alissa Engle *** Vanessa Iacobucci * Michael Andrew Kelly ** Joshua M. McGoun ** Jeffrey R. Peters Brittany Anne Pikur *** Dominique Marie Righi ** Cory Randal Rowe ** Laura J. Soha *** Carrie Elizabeth Stork * Hilary Lauren Tutrani *
Criminology/Pre-Law Bachelor of Arts David Bradford Ball *** Lucas D. Bark	Fashion Merchandising Bachelor of Science Monica Nicole Baker Lauren Nefesha Fisher Jamie Renee Flati Tessa Kate Handling * Laura Anne Hasenmayer * Meredith Leigh Hollandsworth Tara Janelle Jones * Adrienne R. Kerlin ** Jessica R. Lehner Brittany Dawn Mayfield Nicole Jean Mears ***	Hospitality Management Bachelor of Science Natalie Rose Barbi * Ashlee Rae Boylan * Tyler D. Bridge David J. Burch ** James Richard Cessna Sara Danielle Cortina Allen Joseph Deep Morgan Rose Dillon Adam Joseph Ereditario Brandon Gilbert Fisher Mark Christopher Gorshin Brendan John Houck Meghan Marie Houseal James August Johnston Brad Joseph Kluchurosky James F. Krobot *** Amanda J. Kurp Julie Lynn Markowski ** Amy Lynne Olinger Thomas M. Phifer * Jeanette May Rowello Amanda Leigh Rupert *** Anna Marie Rush ** Sara Lavenia Sacharov ** Timothy Christian Sams ** Jonathan Joseph Schoenberger

Joseph Paul Shandor
Michael Sidorovich **
Cindy Marie Snow *
Cody Brandon Wilbert
Matthew James Young

Interior Design
Bachelor of Science
Danielle Lynne Bigler *
Melissa Lynn Blair *
Joanna Bourlogianis
Amber Lee Boyer
Kari L. Byers ***
Megan Christine Coggeshall
Kelly Ann Collins
Ashley A. Cook **
Heather M. Crawford *
Jillian Rae Eisenhart *
Jamie Rose Essick ***
Nicola Elizabeth Farrer *
Nicole Fontaine Feathersen
Kristin Renee Fisher **
Julie A. Graf ***
Desiree M. Grushecky *
Annettia L. Ison ***
Julie Marguerite Jack *
Dana Marie Joseph
Michelle Christine Karner *
Sarah K. Kearney **
Erica Diane Kelly ***
Heather Lynn Kreisher
Jenna Lynn Kurtz ***
Rachael Paige Latas
Sonja R. Leszek
Adelai Virginia Lewis **
Erica Lane Makela **
Kimberly S. Martin ***
Jessica L. McPherrin **
Matthew E. Mihalko *
April Marie Milchak
Jennifer M. Rodfong **
Crystal Ann Spangler *
Brittany N. Winebark
Holly Nicole Winters ***

Nuclear Medicine Technology
Bachelor of Science
Justin Thomas Smith

Nursing
Bachelor of Science
Ashley Nicole Alberico
Constance Lynne Alexander **
Matthew Thomas Barnes
Mackenna Kay Bechelli
Tiny Kwanele Bechtel
Chanda Jo Beck *
Brady Lyn Bennardo *
Ashlee Daneane Bennett-McCoy
Courtnei Renee Bittner

Stephanie Marie Bobby *
Ashley Jennifer Buck
Cassie Ann Buzzard
Bristy Lauren Byich *
Brienne Jennifer Carpinello **
Annale Renee Chieffe *
Danelle Marie Claar
Bethany Lynn Cole *
Melissa Renee Coombs *
Brandi Lea Cory
Kelly Marie Cowan
Stephanie Jean Dalnekoff
Nicole Lynn Davis
Sarah Ann Droelle
Leah Bobbi Earnest
Lindsey R. Evans ***
Melissa Ann Fox *
Lauren Amber Franks
Kimberly Ann Fugate *
Kasey Rae Gamble
Heather Renee Gardner *
Kristy Lynn Garrity
Aeden Hailemichael Ghebreselassie **
Greanne Gallardy Gramling **
Julie Ann Green **
Amber Rae Harman
Margaret S. Harper ***
Amanda Jo Harrison *
Justin David Hensal
Alisha Marie Henzler
Leigh Anne Hetrick *
Lisa R. Hopkins *
Jenna Michele Horton
Regina M. Brunetti Kirk **
Ashley Marie Konitsky *
Lindsay Katherine Krumins
Lindsey Anne Laurie
Mara Elizabeth Lindberg ***
Julie Loftus **
Kimberly Ann Louis
Danielle M. Lukehart
Christine Malin
Gretchen Marie Marshall
Jessica A. Marson
Kelly Ann Mayer **
Chelsi Lee McClellan **
Kelly Lynn McClelland ***
Angela F. McCullough
Danielle Marie Mitchell
Heidi Lynn Mitskavich **
Shawna Lee Montgomery *
Gina Lynn Nardello
Jennifer L. Naugle
Rebecca Lynn Nguyen
Regina S. Paronish **
Tracy Jo Pebley
Victoria Angel Perla
Megan Renee Ramsey **
Alana Marie Rizzo **
Erin Michelle Rock

Julie Elizabeth Ross
Jennifer Lynn Roundtree *
Tiffany Rose Sarnese
Ellen Elizabeth Schick
Jenna Lynn Sekowski
Elizabeth Jean Sifinski *
Katie Lynn Simpson
Kara Ann Smail **
Christine Renee Sosnowski
Tracey Lee Spicuzza
Holly L. Spotts
Karla Renee Stevens
Kelly Rebecca Stewart *
Erin Elizabeth Stoltz **
Karen D. Sturgeon
Lauren Anne Swigart **
Courtney Marie Tims
Matthew McBride Veith
Kimberly Jean Voegler
Stephanie Rose Vrabel **
Matthew J. Walkovich
Jamie Lee Webster
Todd Ryan Wentz **
Allison Kay Weston
Darlene Denise Zelnak *
Rachel L. Zepp **
Alex John Zimmerman

Nutrition
Bachelor of Science
Heather Marie Marone

Nutrition/Dietetics
Bachelor of Science
Trisha Ann Allison
Natalie Michelle Austin *
Sharon Lee Bachman **
Kayla S. Bair
Latonia Lynn Beitzel
Amy Beth Brumbaugh
Rebecca M. Chamberlin ***
Kelli A. Curtiss
Sara M. Dennis ***
Danielle Helene DiMezza
Erin Savilla Frank
Angela Marie Giron *
Jeffrey D. Hildebrand, Jr.
Emily Susan Jones *
Kimberly Alice Jones *
Amanda Victoria Marie Loscar
Carly J. McLendon
Tegan Jean Medico ***
Terri Marie Rinaldi **
Jill K. Wanchisn ***
Sarah A. Wennogle ***
Leah Marie Zeman **

Physical Education and Sport
Bachelor of Science
Leah Marie Gross *
Elizabeth Marmer

Physical Education and Sport/Athletic Training
Bachelor of Science
Mindy Jo Burnosky *
Angeline R. Davis **
Ashlee Carmel Jones ***
Rebecca Sara McFeaters
Stephanie K. Rodgers *

Physical Education and Sport/Exercise Science
Bachelor of Science
Stacie Adams **
Charles Jay Anderson
Elaine Therese Bernat ***
Anastacia Marie Frank ***
Kevin Eugene Gehman
Jessica M. Giblock *
Julianne Gillespie **
Laura Elizabeth Henderson *
Kishana Dilisa Johnson
Michael Dennis Bridges Lattimore
Joseph C. Myers
William James Nowak, Jr.
Anthony Michael Piroli **
Jillonna M. Rekich *
Maiya Satchell
Alan David Smith **
Mark Nelson Southworth
David J. Tegethoff
James Daniel Waechter, Jr.
Megan Elizabeth Woodley

Physical Education and Sport/Sport Administration
Bachelor of Science
Evan Richard Bianchi *
Kari Lyn Caldwell
Gretchen Michelle Colwell **
Robert L. Conrad
Carl R. Driscoll
Paul Michael Fair
Kelly A. Frascatore
Jeremy Lin Geesaman
Crystal Lee Heder
Andrew Douglass Hood
Joseph Michael Ladisic *
Katharine Kelly Lee
Krista Marie Nordby **
Daniel Joseph Pickens
Adam John Potts
Chase M. Rosenbayger
Matthew Steven Scott
Andrew Scott VanHorn

Respiratory Care
Bachelor of Science
Hallie Beth Barno
Brittany Nicole Bayer *
Mitchell Duane Bjerke
Andrea Susan Bumbarger *
Carla Adair Conrad *
Samuele T. Dejene
Jayme Lynn Hartig
Laura Marie Kolodick
Raymona Cynthia Marieno
Michael David Martino *
Justine Marie Mosley
Emily May Price *
Janelle Mae Reed
Kilie Jo Tompkins
Katie Alise Williams

Safety Sciences
Bachelor of Science
Nicholas R. Braun
Kyle David Bruno *
John Colin Bugosh
Daniel Mark Chimino *
Dustin Ronn Fleeeger
Alisa Rae Greene
Jason L. Kawa
John R. Montgomery ***
Maureen Alexa Patterson **
William Alexander Sabo
Clinton Lee Shinsky
Matthew G. Skebeck
Timothy Michael Vodopivec
Shawn William Wilson
Matthew Aaron Wireman

College of Humanities and Social Sciences

Yaw A. Asamoah, Dean

(white tassels)

Anthropology
Bachelor of Arts
Melissa Christine Anderson *
Carla Marie Bossler *
Kathryn Rebecca Gompers **
Virginia Leigh Mesko
Sarai Ann Raffensperger
Katharina Tamara Smith

Anthropology/Applied Anthropology
Bachelor of Arts
Brandie Alyce George **
Yumi Ishikawa

Anthropology/Archaeology
Bachelor of Arts
Erica Leigh Ausel ***
Leland Geletka **
Audrey Sue Lilley
Susan M. Lukowski **
Samuel Clayton Williams III **

Economics
Bachelor of Arts
Brandon Bassett *
Samantha Erin Collinash ***
Bryrony Leah Foltz **
Rona Lynette Green
Pamela J. Keefe
Patrick Ryan McCulley
Maureen Elizabeth McGrory **
Amy J. Menhart **
Karyn Lynell Perkins
Daniel Neil Shapero
William Michael Shapiro
Audrey Tetu **
Jonathan Reed Thompson
Lauren B. Venturino ***
Craig Robert Andrew Wilson
Mason Robert Young ***

Economics/Mathematics
Bachelor of Arts
Carrie Elizabeth Hall ***

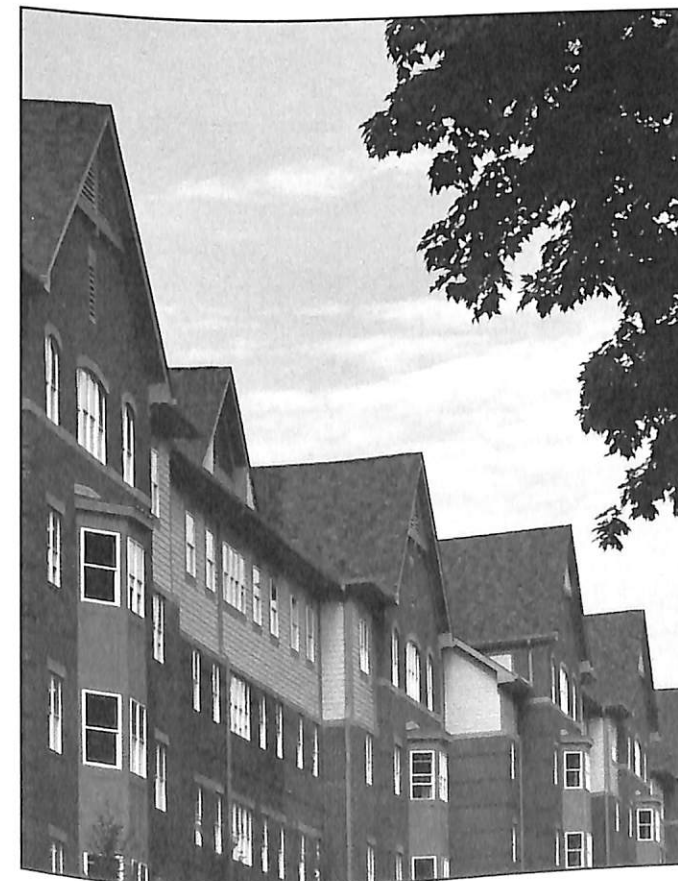
Economics/Pre-Law
Bachelor of Arts
Justin Edward Eppley ***
Jarib G. Misosky ***

English
Bachelor of Arts
Mary Lynn Barron
Christopher Scott Bell *
Hannah S. Caldwell ***
Melissa Lynn Couch ***
Stefania Patrice Demczak
Megan Jenna Doney
Donald Circe Fisher ***
Erin D. Haney *
Katie R. Hoffer *
Kimberly Ruth Hondos
Michael James Horrell
Kyle Lee Hufnagel
Eric Andrew Janoski
Anthony Stephan Johnson
Sara Jo Elizabeth Marmo ***
Amanda Mae O'Brian
Cindy Pierre-Louis
Rebecca Suzanne Reynolds
Loren Rae Stephenson
Todd Michael Triplett
J. Dustin Williams **
Elizabeth Lee Witherite ***
Timothy C. Zeddies **

English /Pre-Law
Bachelor of Arts
Jessica Lynn Legg *
Julie Marie Lomb **

English Education
Bachelor of Science in Education
Gionni Marie Houser ***
Kristin Kunkle **
Laura Rita Mainiero ***
Laura Kathleen Nearhood ***
Justin Michael Palmisceno
Ashley M. Quinn ***
Jenna Lynne Reed ***
Laura Christine Yevchak ***
Jennifer L. Yuhas **

Geography
Bachelor of Arts
Holly Marie Diehl **
Kyle W. Goisovich
Paul Joseph Holub, Jr.
Samuel L. Veltre ***



**Geography/Environmental
Geographer**
Bachelor of Arts
Eric Jesse Hull ***
Kara Marie Kasper ***
Douglas J. A. Olsavsky
Cassidy Robert Rhea **
Kevin Patrick Vogt

**Geography/GIS and
Cartographer**
Bachelor of Arts
Alex Anderson **
Hallie A. John
Gregory Stuart Kuckuck *
Anthony James Pologruto, Jr.

Government and Public Service
Bachelor of Arts
Corey J. Tolan
Kylie Shannon Wolfe-Fee ***

History
Bachelor of Arts
Albert J. Battaglia
Lynette Marie Becker
Stephen J. Callahan
Brian Connor
Abigail Ann Jacobsen ***
Stephen Ralph Logan, Jr. ***
Amy Rae Mata **
Brendan Michael McPeak
Robb Wilson Myers
Christina Lea Orangis
Annelise Marie Powell *
Gina Anne Russo ***
Bobbie Jo Zapor ***
Jeffrey James Zearfoss **

History/Pre-Law
Bachelor of Arts
Jonathan James Good **
Daphne Jean Ingalls
Vanessa Ann Pecze

International Studies
Bachelor of Arts
Heather Marie Beichler *
Troy L. Conrad
Kristopher G. Conway †
Levi Daniel Kovacs ***
Edda Alexandra Moneak Prado
Katherine Anne Visco

Journalism
Bachelor of Arts
Diana Rae Alcorn *
Kari Lynn Andren ***
Holly C. Bernard
Nathan Brown
Somer L. Bruce *
Derek Daniel Buck
Timothy G. Bugaile ***
Shayne Alexander Busti
Kristina Marie DeVito
Katie Lynn Drozynski
Kara Lyn Dubnansky
Elizabeth R. Gaffron **
Brittany M. Giberti
Corey Thomas Hess
Ashley M. Hileman
Katie Jean Killmeyer **
Laura B. Kingsbury ***
Ashley Nicole Maday
Allison Jill Margulies
Renee Alexis Martin ***
Rachel Michele McGreal *
Stephanie Lynn Mlot *
Amanda Mae O'Brian
Leslie A. Orlando *
Jade Marie Peterson
Kari Elizabeth Randall
Curtis Robert Rosler
Brooke Allishia Schreiber
Mary Elizabeth Shepherd *
Rebecca Elise Walsh
Keri Lynn Warren
Clinton Scott Williamson
Nicole Lindsey Wolford **
Mariah Magdalene Zajac ***

Philosophy
Bachelor of Arts
Michael Louis Aaronson *
Jessica Rikki Armstrong **
James William Pool *

Philosophy/Pre-Law
Bachelor of Arts
Samantha J. Bredl

Political Science
Bachelor of Arts
Justina Ruth Allen
Kyle Bradford Angell
Alyson Rebecca Derk *
Luke Allen Healey
Maureen Catherine LaNoce *
Pranesh Madhavan
Lauren Elizabeth McDermott ***
Justin Michael Roberts *
Jaci Anne Rodgers ***
Timothy Paul Shoemaker **
Michael James Simon

Political Science/Pre-Law
Bachelor of Arts
Amanda Leigh Davis
Georgia Louise Fabina
Karin Lea Judge *
Jason J. Kramer *
Patrice Ann Maddox ***
Jennifer Lang Woods ***

Regional Planning
Bachelor of Science
Jonathan Caleb Bookamer

**Regional Planning/Environmental
Planner**
Bachelor of Science
Kimberly Sue Diamond *

**Regional Planning/GIS and
Cartographer**
Bachelor of Science
Dain Joseph Frantz

Religious Studies
Bachelor of Arts
Bobbie Jo Zapor ***

Social Studies Education/History
Bachelor of Science in Education
Scott Allen Bennett ***
Carla Marie Bossler *
Steven William Davis **
Christopher Tor Gooding ***
Christian P. Hauslein ***
Michael N. Hill ***
Erika Lynn Nati *
Liam Walter O'Donnell *
Jessica Lane Oliver ***
Elizabeth Grace Parks ***
Chad Joseph Phares
Casey Daniel Sandrock ***

Sociology
Bachelor of Arts
Shayna Nicole Bennett
Jodi L. Blackwell ***
Jacob Michael Brink
Sara Jeanne Brown
Jennifer Lynn Cranston
Amanda Kathryn Crooks ***
Shelsi Eazor
Nyssa Lynn Finnefrock
Christopher Alan Frech
Meghan J. Gregorakis **
Khadijatu Shantel Kalay
Heather Jane Kaufman **
Sasha Marcia King **
Lindy Liane Kopicki *

Michael William Leedecke *
Carly Jeanne Martin **
Victoria Leigh McCurdy
Sarah K. Miller
Kasie M. Pletcher
Matthew Eric Reinbold
Nicole Renee Reott
Kaitlyn Rose Sagely *
Jamie Lynn Schwab
Kayla Louise Stewart
Molly Sullivan
Holly J. Troutman
Erica Leigh Vandevort *
Robin M. Veshosky ***
Rachel Kathleen Yamber **
Loni Kay Yatsko **

Sociology/Human Services
Bachelor of Arts
Lindsey Marie Arrimour **
Michael Angelo Carnicella
Kira Jean Gillespie-Hill *
Emily Ann Janoski
Abbey Leigh Lion *
Lauren A. Nedimyer
Lauren M. Spelman
Gregory Shawn Troup

Spanish
Bachelor of Arts
Kalie Rae Contres ***
Debbie D. Medaglia *
Harold Jose Salazar

Spanish Education
**Bachelor of Science in
Education**
Megan Renee Bullers **
Laura Anne Halbedl **
Brian Kenneth Henninger ***
Christopher S. Showers ***

Spanish for International Trade
Bachelor of Arts
James J. Emery III

College of Natural Sciences and Mathematics

Gary S. Stoudt, Interim Dean

(gold tassels)

Applied Physics/Electro-Optics
Bachelor of Science
Joseph L. Baccanti
Andrew David Visnansky

**Applied Physics/
Nanomanufacturing**
Bachelor of Science
Joseph L. Baccanti

Biochemistry
Bachelor of Science
Brittany Lynn Baird ***
Robert John Bauer **
Kaycie Marie Butler ***
Jeffery Matthew Layton
Antonio J. Scatena *

Biology
Bachelor of Science
Courtney D. Gilstrap
Amber Brittany Manack *
Stephanie Helen Nickolas ***
Michael Paul Shank
Justin Allen Tressler
Robert L. Troyan II
Andrea Sue Wheeler **
Teghan Renee Woodruff

Biology Education
Bachelor of Science in Education
Jessica Dawn Campbell *
Amanda Dawn Englert
Jill Marie Mitchell
Chad Shelly ***
David Nathaniel Vogel *

Biology/Cell and Molecular
Bachelor of Science
Kathryn Louise Brunecz *

Biology/Pre-Medical
Bachelor of Science
Olu W. Barbar
Michelle Charae Brock
Dominic Robert Luciano ***
Marc J. Ofchinick ***
Sarah M. Ronk
Jon Robert Skupaka ***
Kalpana Suresh ***

Biology/Pre-Veterinary
Bachelor of Science
Korrin R. Lucas **

Chemistry
Bachelor of Arts
Jane Calvert ***
John Patterson Crandall

Bachelor of Science
Cassidy Mark McCurdy
Nicole L. Morozowich **

Chemistry Education
Bachelor of Science in Education
Michael John Deible *
Amy Jean Trexler

Computer Science
Bachelor of Arts
Mark Alexander Walters
J. Dustin Williams **

Computer Science/Applied
Bachelor of Science
Nick Conroy ***
Gregory Dorian Frazier
Donald James Spade **
Brian Zemba

**Computer Science/
Information Assurance**
Bachelor of Science
Waylon Joshua Coulter *
Bryan Mark Keller
Melissa Lynn Peters
Robert J. Trimble

**Computer Science/
Languages and Systems**
Bachelor of Science
Andrew Steven Long
Daniel C. Saylor

Earth and Space Science
Education
Bachelor of Science in Education
Nathan Lewis Dell *

Electro-Optics
Applied Associate in Science
Ruth Y. Filippini
Tanner Curtis Hutchings *
Peter D. Kazunas ***
Jacob George Visnesky

Geology
Bachelor of Science
Matthew Philip Bolyn
Jeremy J. McCombie
Benjamin F. Schupp **
Nicholas Matthew Welsh **

Mathematics
Bachelor of Science
Richard David George
Christine Kester
Nadia Man *

Mathematics Education
Bachelor of Science in Education
Heather Diane Kistler **
Jeffrey Adam Lyons *
Julie Ann O'Hara *
Justin M. Pagni *
Mark Alton Reddecliff
Megan Jo Sheeler **
James Michael Slane *
Derek Allen Stiffler **
Jillian Danielle Tira **

Natural Science
Bachelor of Science
Brenden M. Burkholder ***

**Natural Science/
Pre-Chiropractic**
Bachelor of Science
Darcee Ann Schmidt ***
Lauren M. Sharpless

**Natural Science/
Pre-Dentistry**
Bachelor of Science
Thomas M. DiMarco *
Casey D. Heckman

**Natural Science/
Pre-Optometry**
Bachelor of Science
Lisa Ann Henry
Carolyn Elizabeth Majcher ***
Zoe Rose Phillips ***
Diana Marie R. Royandoyan
Kristen J. Taddie ***

**Natural Science/
Pre-Pharmacy**
Bachelor of Science
Lindsay Ruth Dachille **
Justin Robert Foreman
Nicole M. Gleockner
Neika Diane Vendetti *

**Natural Science/
Pre-Physical Therapy**
Bachelor of Science
Beth Erin Christy ***
Kyle P. Dumpert ***
Joshua P. O'Link
Katie Leigh Shields
Benjamin J. Wolff

Physics
Bachelor of Science
Frank James Frederick, Jr.
Robert William Steinman **

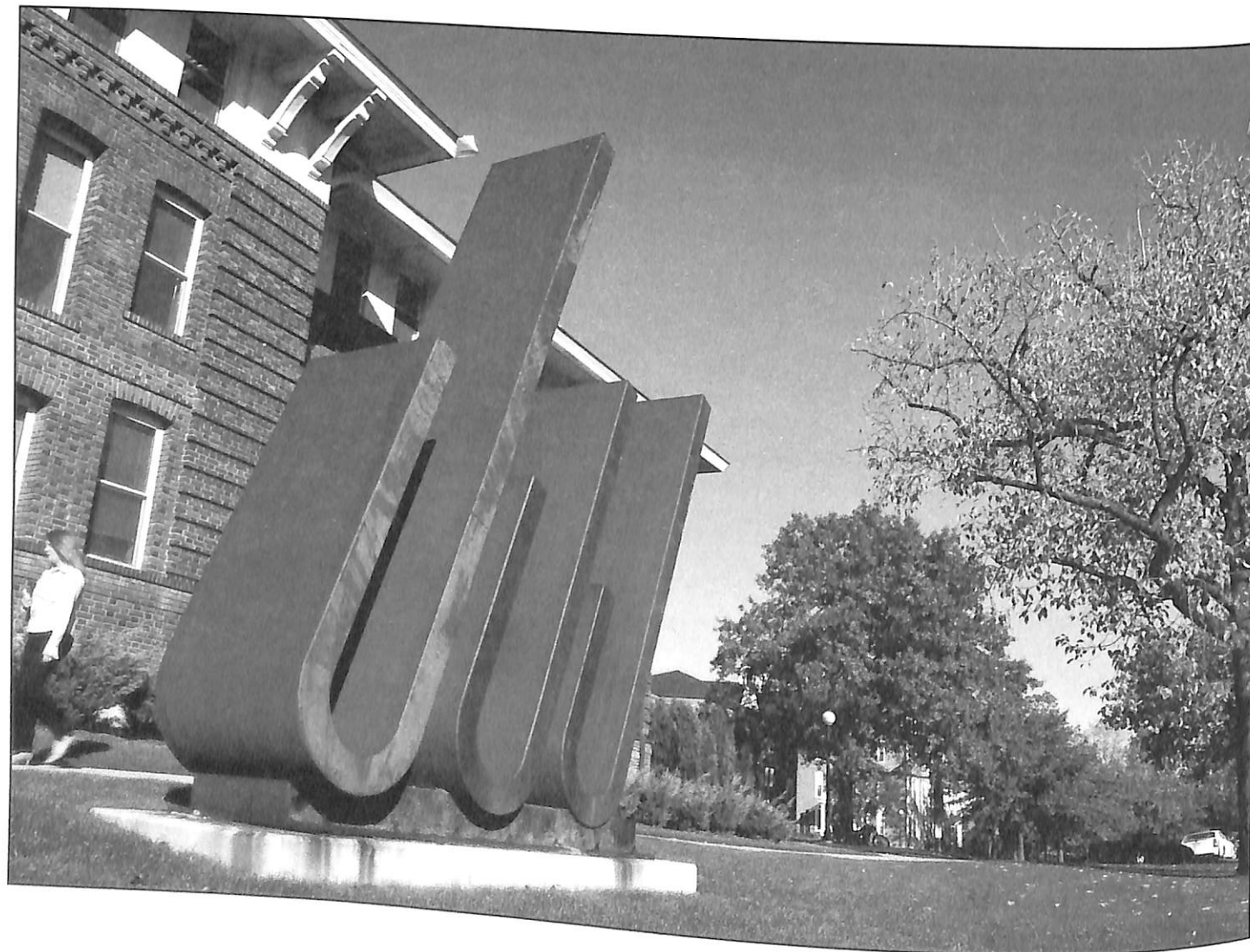
Physics Education
Bachelor of Science in Education
Cassandra Lyn Allman *
Frank T. Battick *
Evan James Willkomm **

Psychology
Bachelor of Arts
Stephanie Marie Bajorek ***
Eric Michael Bell *
Stephanie J. Boccella
Ashley Pamela Brady
Katherine Noel Chorik
Christina T. Ciervo
Lisa Claiborne
John Patterson Crandall
Douglas Earl Cravener
Amanda M. Deptula *
James Edward Eller **
Nicole A. Ferdinand
Matthew Hargett
Dominique A. Harrison
Donald E. Henry III
Kathleen Kelsey Hicks
Heather Marie Hood
Stacey L. Hood
Shawn Jones
Natalia Maria Kaniasty *
Lisa M. Kass *
Ashley Ann Keaton
Thomas Scott Keen
Jessie Lee Kessler *
Audra Michelle King ***
Lindsey Kirland
Justin S. Landers
Jeffrey Alexander Mattocks
Lynn Marie McCullough **
Amy Anne Metelsky

† Awarded Posthumously

Erin Marie Mitchell
 Abiodun Ofuje Omo-Ogun
 Mark Raymond Peterson
 Antoinette Rasheem Elizabeth Pinckney
 Tariq Nadir Queen
 Darcee Ann Schmidt ***
 Amanda J. Smith *
 Eunjung Helen Tayman
 Stacy Lynn Thomas
 Helena A. Tisinger
 Katherine Lucia Treter
 Staci Ann Turkily
 Alexandra Louise Vallieres
 Vanessa Isabel Varacalli
 Joseph Victor Vesnesky, Jr.
 Lance Otis Waltman *

Honors Program in Psychology
Bachelor of Arts
 Lindsay Ruth Dachille **
 Nicole Megan Fenstermaker **
 Brett M. Goshe ***
 Jennifer Lindsay Moore ***
 Erica Lynne Morgan ***
 Nabina U. Pant ***
 Lisa Ann Plowman ***
 Denise Marie Real **
 Chrystal R. Shawley **



Department of Military Science

Major Charles W. Ziegenfuss, Interim Chairperson

Upon conferral of the degree, the following students will be commissioned as second lieutenants in the United States Army:

Kyle Bradford Angell
 Brandi Lea Cory
 David Patrick Crowley
 James Michael Hawthorne
 Eugene Patrick Ingalls
 Joshua James Lafleur
 Shawn Timothy McMickle
 Robb Wilson Myers
 Maria Lillian Myers
 Giani Nicholas Ruffo
 Joseph Victor Vesnesky, Jr.

Kristy Lynn Notestine Sociology	Erica Rae Smith Clinical Psychology	Master of Education Ryan Christian Abel School Counseling	Diane M. McNeill Elementary Education	Michael Siuniak School Counseling	Craig L. Burnham Geography	Mary Beth Kennedy Nursing	Angela Mary Sodano Speech-Language Pathology
Nicola Joseph Pagano Criminology	Kelly L. Smith History	Renee A. Amendola School Counseling	Kristen Marie Meharra Elementary Education	Angie Marie Smith Elementary Education	Tracie Ann Clarke Food and Nutrition	Joan Marie Krug Nursing	Lisa M. Stockley-Patalune Nursing
Carleen M. Pallante Student Affairs in Higher Education	Su Jin Son Adult and Community Education	Gina C. Badger Elementary Education	Patrick Shawn Moorhead School Counseling	Sheena Marie Smith Business	Sarah Elena Combs Food and Nutrition	Paula J. Kustenbauder Nursing	Talayne K. Suder Speech-Language Pathology
Robyn Leigh Parker Community Counseling	Caitlin Start English	Theresa Marie Banas School Counseling	Patrick D. Mulroy Business	Michele L. Sonney School Counseling	Karen Ann Day Nursing	Mary M. Lady Nursing	Dan Sui Information Technology
Linda Slivoskey Payne Community Counseling	Timothy Francis Stevenson Music	Jeremy Meredith Bracken School Counseling	Lance L. Myers Elementary Education	Kristin Nicole Soulier School Counseling	Carrie Ann Derco Geography	Adam D. Lint Geography	Amy Rebecca Sutara Nursing
Jennifer A. Polosky Community Counseling	Courtney M. Stone Student Affairs in Higher Education	Shona C. Brown Elementary Education	Timothy P. O'Rourke, Jr. Business	Laurie Beth Sweitzer Education of Exceptional Persons	Dwight Lamont Dupree Sport Science	Elaine B. Little Nursing	Sandra J. Toy Nursing
Stacy Lynn Pound Adult and Community Education	Heather Ryan Storck Student Affairs in Higher Education	Jennifer Lynn Buchkovich Elementary and Middle School Mathematics	Carol Louise Paskovitch Education of Exceptional Persons	Mohammad Hasan Tanvir Business	Julia Ecklar Biology	Melissa Ann Mancini Speech-Language Pathology	Ashlee Marie Weakland Speech-Language Pathology
Jennifer Nicole Pruzinsky Student Affairs in Higher Education	Jill Elizabeth Sturges Criminology	Lisa Anne Cubellis Elementary Education	Jeannie M. Petrocelli Elementary Education	Christina Thomas School Counseling	Lindsay Marie Espy Speech-Language Pathology	Kathryn H. McAdoo Food and Nutrition	Matthew Baxter White Biology
Dana M. Puglisi Student Affairs in Higher Education	Donald Lee Swanson, Jr. English	Julia Ann Damico Elementary Education	James Andrew Phillips School Counseling	Shannon Renee Wasicki Education of Exceptional Persons	Vivian S. Evans Nursing	Michael Jay McGarvey Safety Sciences	Faith D. Willinsky Nursing
Matthew John Rainey Industrial and Labor Relations	John W. Tabacchi Adult and Community Education	Maribeth Domonkos School Counseling	Shannon Yvonne Pope School Counseling	Katelyn M. Waterhouse Education of Exceptional Persons	Stephanie Lynn Ference Speech-Language Pathology	Cassie R. Meneely Speech-Language Pathology	Dongmei Zhang Chemistry
Rachel Lynn Raymond English	Emily J. Tamosauskas Student Affairs in Higher Education	Bryan Dull Health and Physical Education	Heather Judine Rhine Education of Exceptional Persons	Jessica Wenner Elementary and Middle School Mathematics	Donna (Smouse) Ferguson Nursing	Elizabeth A. Mudrey Speech-Language Pathology	Hailiang Zheng Sport Science
Kadia Laurel Reid Student Affairs in Higher Education	Chun Lim Gerald Tang Student Affairs in Higher Education	Emily Sue Felix Elementary Education	Robin Lynn Ribarich School Counseling	Abigail Elizabeth White Elementary Education	Kimberly A. Forst Nursing	Elizabeth Meckley Myers Nursing	Education Specialist Certificate Paula D. Adair School Psychology
R. Courtney Riffer Sociology	Kristina Taylor-Porter Sociology	Desiree Andrea Grant School Counseling	Sean-Paul J. Richman Elementary Education	Clare A. Yaksich Elementary Education	Vincent J. Frary Biology	Terri L. Myers Nursing	Jessica Bowser School Psychology
Shannon R. Rogers Criminology	Russell G. Thomas Industrial and Labor Relations	Melanie Lynn Halsted Elementary Education	Tracey Lynn Rothrauff School Counseling	Aimee Lynn Zottola School Counseling	Earl K. Gardner III Nursing	Heather Renee Najduch Speech-Language Pathology	Erin Elizabeth Brady School Psychology
Jonathan Edward Rogosky History	Stephen George Tsikalas Geography	Ian N. Hatcher Business	Ariana M. Ruffing Elementary Education	Abigail Elizabeth White Elementary Education	Donna Marie Hajduk Nursing	Pamela S. O'Harra Nursing	Cara Marie Ciccolella School Psychology
Justine Katherine Rowles English	Noelle C. Turner Clinical Psychology	Linda J. Hilling Business	Jonathan Andrew Rutledge Education of Exceptional Persons	Clare A. Yaksich Elementary Education	Ronald P. Hannah Nursing	Judith Portante Pallone Nursing	Peggy Ann Feldstein School Psychology
Sean P. Shields Industrial and Labor Relations	Christopher Mark Wengert Music	Benjamin Thomas Huber Elementary Education	Kecia Jayne Scott Education of Exceptional Persons	Aimee Lynn Zottola School Counseling	Janessa Petro Hardesty Sport Science	Amber Marie Pangallo Speech-Language Pathology	Caitlin S. Flinn School Psychology
Cathyann Simmons Community Counseling	Jason R. Wysocki Criminology	Jill B. Huffman School Counseling	Elizabeth Helen Shevock Elementary Education	Darlene A. Ardary Nursing	Ashley Marie Harpster Speech-Language Pathology	David Thomas Pudder Physics	Christian David Giannone School Psychology
Jennifer L. Simon Student Affairs in Higher Education	Rebecca Lynn Zabel Student Affairs in Higher Education	Aysia M. Hunter School Counseling	Laurie A. Shipley School Counseling	R. Brent Baird Sport Science	Katelyn Lee Hayden Geography	Jennifer Marie Robison Speech-Language Pathology	Angela J. Hughes School Psychology
Christine Marie Smith Student Affairs in Higher Education	Alexis Loy Zellefrow Criminology	Nikolaus James Koch School Counseling	Christa M. Shutty Education of Exceptional Persons	Johanna E. Boothby Nursing	Eugene Hunter Hurst IV Geography	Jeffrey William Rupert Chemistry	Sarah Anne Napolitan School Psychology
		Cynthia Hutchins Long Elementary and Middle School Mathematics	Mary-Elizabeth Silvia Elementary Education	Tricia L. Bosnik Speech-Language Pathology	Steven Michael Jackson Sport Science	Heather Ann Schmaus Speech-Language Pathology	Christina A. Sylvester School Psychology
		Nancee Magill McCune School Counseling		Carolyn Damato Broyles Geography	Amy Lorraine McDonnell Johnson Nursing	Corrie Elizabeth Smichnick Speech-Language Pathology	Mary Ellen Whitner School Psychology
				Kimberly Ann Buchanan Speech-Language Pathology	Diane Lynn Yobp Jones Nursing	Sean D. Smith Chemistry	

Certificate of Recognition
J. Brooks Broadus
Criminology

Roger J. Charnesky
Criminology

Rebecca A. Creasey
Criminology

Daniel V. Delgado
Criminology

James M. Doherty
Criminology

Daniel R. Einhaus
Criminology

Henry S. Everett
Criminology

Jason W. Freed
Criminology

Mark J. Ormsby
Criminology

Michael F. Paul
Criminology

John G. Perren
Criminology

Pamela A. Piersanti
Criminology

Harry J. Ronsisvalle
Criminology

Steven T. Shepherd
Criminology

John Edmund Terrall
Safety Sciences

Antonio Vargas
Criminology

Stephanie M. Viegas
Criminology

John R. Woodill
Criminology

Master of Fine Arts

J.R. Sherburne
Thesis: *Ani-Clay-Matic: An Investigation into the Narrative Vessel*
Art

Doctorates and Dissertations

Boldface denotes awarding IUP major.

Doctor of Education

Kristine Marie Zaragoza Anderson
Dissertation: *Emerging Health Trends and Behavior Risk Factors for Chronic Disease Risk in Rural and Urban Pennsylvania: Implications for Health Education*
Curriculum and Instruction

Alfonso Angelucci
Dissertation: *The Role of the Elementary Principal in Promoting Parent Involvement: Evidence from Rural, Blue Ribbon Elementary Schools in Pennsylvania*
Administration and Leadership Studies

Sherlynn Catherine Bessick
Dissertation: *Improved Critical Thinking Skills as a Result of Direct Instruction and Their Relationship to Academic Achievement*
School Psychology

Janet Lee Brennan
Dissertation: *A Comparison of Four-Year Teacher Preparation Programs in Secondary Mathematics Education*
Administration and Leadership Studies

Elizabeth Buzzelli-Clarke
Dissertation: *The Academic Environment of One Junior High School In Northeastern Pennsylvania as Perceived by the Administration and the English, Mathematics, and Music Faculty: An Ethnography*
Administration and Leadership Studies

Megan Leigh Edwards-Gass
Dissertation: *A Study of School Psychologists' Knowledge of and Experience with Bullying and Relational Aggression in Students from Kindergarten through Twelfth Grade*
School Psychology

Robert James Gregory
Dissertation: *Tier I Response to Intervention: Elementary School Preparedness Factors*
School Psychology

Kathleen McDonnell Gulbin
Dissertation: *Transformational Leadership: Is It a Factor for Improving Student Achievement in High Poverty Secondary Schools in Pennsylvania?*
Administration and Leadership Studies

Marjorie Anne Mattis
Dissertation: *Academic Aspirations and Expectations: High School Guidance Counselor Perceptions of the Benefits Students Receive by Participating in Dual Enrollment Programs*
Administration and Leadership Studies

Mark A. Nevill
Dissertation: *The Impact of Reading Self-Efficacy and the Regulation of Cognition on the Reading Achievement of an Intermediate Elementary Sample*
School Psychology

Paula Grace Purnell
Dissertation: *The Collaboration of Teacher/Artist Teams: A Qualitative Analysis of Selected Interpersonal Components Influencing a Partnership-Model Artist Residency*
Curriculum and Instruction

Mary E. Armstrong Rauch
Dissertation: *Possible Predictive Factors for the Greater Johnstown School District's Pennsylvania System of School Assessment Reading Results*
School Psychology

Rebecca Dawn Rockey
Dissertation: *An Observational Study of Pre-Service Teachers' Classroom Management Strategies*
Curriculum and Instruction

Brandon Kyle Schultz
Dissertation: *Teacher Behavior Ratings of Adolescents with Attention-Deficit Hyperactivity Disorder (ADHD): Interrater Reliability and Sources of Rater Bias*
School Psychology

Susan Marie Sibert
Dissertation: *A Case Study of Effective Staff Development Practices in a Small Pennsylvania Junior-Senior High School with Inclusive Practices*
Administration and Leadership Studies

Janice Hostler Stewart
Dissertation: *The Effect of Foreign Language Study in Elementary Schools in Pennsylvania on Achievement in Reading and Math*
Curriculum and Instruction

Rodney R. Troutman
Dissertation: *University/K-12 Partnerships: How One University Impacted High School Career Decision-making Programs*
Administration and Leadership Studies

Joseph Weis
Dissertation: *Reading Assessment Practices of School Psychologists with Beginning Readers: A National Survey*
School Psychology

Doctor of Philosophy

Adel Hassan Al-Omrani
Dissertation: *Perceptions and Attitudes of Saudi ESL and EFL Students toward Native and Nonnative English-Speaking Teachers*
English

Kyung-shick Choi
Dissertation: *Structural Equation Modeling Assessment of Key Causal Factors in Computer Crime Victimization*
Criminology

John Emory Dean
Dissertation: *Travel to Identity in the Mid-Nineteenth-to-Mid-Twentieth-Century Contact Zone of New Mexico: Knowledge Claim Tests and Platonic Quests*
English

Dale L. Ferguson
Dissertation: *The United States Postal Service: A Case Study of Large Scale Government Transformation*
Administration and Leadership Studies

Eun Hee Han
Dissertation: *Challenges of the Intercultural Classroom: A Qualitative Study of the Perceptions of International Teaching Associates and their American Students*
English

Burgsbee Lee Hobbs
Dissertation: *Expatriate Spaces, Ex-Soviet Places: Narratives of Americans Abroad in Turn-of-the-Millennium Post-Communist Europe*
English

Elaine M. Kelly
Dissertation: *In Search of One's Pack: A Narrative Study of a Working-Class Woman in the Academy*
English

Paul Michael Klenowski
Dissertation: *"Other People's Money": An Empirical Examination of the Motivational Differences Between Male and Female White Collar Offenders*
Criminology

Bradley Joseph Lint
Dissertation: *Teaching College Literature: Educational Alignment and Literature Pedagogy*
English

Krystia Nora
Dissertation: *"A New Lease on Life": A Narrative Case Study of an Older Adult, Participant Design Writing Group*
English

Stephen Mark Swartz
Dissertation: *Composition and Identity: A Theoretical Approach to First-Year Composition*
English

Doctor of Psychology

Candice Jean Dunn
Dissertation: *Reducing the Premature Termination of Children from Psychotherapy through Research Based Program Evaluation*
Clinical Psychology

Distinguished Faculty Awards

For Teaching

The primary mission of IUP is to teach, and it is because of the quality and dedication of the faculty that the university has received national and international acclaim. In appreciation of outstanding teaching ability, IUP presents this award. Past recipients include Mohammed E. Ghobashy, 1978; Irwin Marcus, 1979; Frank Viggiano, Jr., and Mark A. Plivelic, 1980; Robert A. Patsiga, 1982; Ronald M. Weiers, 1983; Howard E. Tompkins, 1984; Conrad J. Gates, 1985; Ronald L. Marks, 1986; Francis W. Liegey, 1987; Joann E. Walthour, 1988; Robert J. Stonebraker, 1989; Mary Lou Zanich, 1990; Terry T. Ray, 1991; John W. Kuehn, 1992; Barbara A. Kraszewski, 1993; Gary J. Olmstead, 1994; Hilary L. DeMane, 1995; Rebecca A. Stoudt, 1996; Mary Ann Cessna, 1997; Sherrill J. Begres, 1998; William McPherson, 1999; Ronald A. Juliette, 2001; Laurence D. Kruckman, 2002; Linda J. McPherson, 2003; Thomas R. Lord, 2004; James J. Jozefowicz, 2005; Sally M. McCombie, 2006; and Dan J. Tannacito, 2007.

For Research

Research endeavors frequently culminate in the publication of scholarly articles and books which reflect favorably both on the individual faculty member and on the university. It is for these scholarly contributions and for the institutional recognition they invoke that IUP presents this award. Past recipients include Joseph C. Clark, 1978; Vincent Miller, 1979; June K. Phillips, 1980; W. Wayne Smith, 1981; Arthur C. Hulse, 1982; Martin J. Morand, 1983; Donald A. Walker, 1984; Thomas R. Schaub, 1985; Patrick M. Hartwell, 1986; Gopal S. Kulkarni, 1987; Robert J. Ackerman, 1988; Charles D. Cashdollar, 1989; James M. Cahalan, 1990; Mary H. Micco, 1991; Devki N. Talwar, 1992; Edward W. Gondolf, 1993; Abbas J. Ali, 1994; Stephen K. Sanderson, 1995; Edward M. Levinson, 1996; Krys Kaniasty, 1997; Charlene Plegier Bebeko, 1998; Patrick D. Murphy, 1999; C. Thomas Ault, 2000; Prashanth Bharadwaj Nagendra, 2001; John Zhang, 2002; Terry L. Peard, 2003; Alicia V. Linzey, 2004; Xi Wang, 2005; Narayanswamy Bharathan, 2006; and Gawdat Bahgat, 2007.

For Creative Arts

There are many avenues for scholarly or learned expression, and the creative arts provide, perhaps, the most visible of these avenues. Through public performances and exhibitions, IUP faculty members have brought acclaim and recognition to the university as well as to their particular media. It is for this dedication to quality in the arts that the university annually considers candidates for this award. Past recipients include Charles A. Battaglini, 1977; Ned O. Wert, 1978; Thomas J. Dongilla, 1980; Paul Ben-Zvi, 1981; Christopher L. Weiland, 1982; Ronald A. Juliette, 1983; John J. Dropcho, 1984; W. Delight Malitsky, 1986; Christopher L. Weiland, 1987; Donn W. Hedman, 1988; Carol A. Teti, 1989; Rosaly Roffman, 1990; James G. Staples, 1991; Jean J. Slenker, 1992; Ronald F. Smits, 1993; Mary Beth Leidman, 1994; Sarah J. Mantel, 1995; Dominic J. Intili, 1996; Maurice A. Kilwein-Guevara, 1997; Ed Simpson, 1998; Holly R. Boda, 1999; Annie-Laurie Wheat, 2001; Edward K. Simpson, 2002; Daniel J. Perlongo, 2003; Stanley L. Chepaitis, 2004; Chauna Craig, 2005; and John E. Stamp, 2007.

For Community Service

This award recognizes either significant and sustained contributions to the university community or to the community at large. Service may be part of an extension of professional responsibilities which exceed the nominee's nominal job description or may be distinguished service to the local, state, national, or international community. Past recipients include Isadore R. Lenglet, 1982; John E. Merryman, 1983; Richard D. Magee, 1984; Warner E. Tobin, 1985; Daniel DiCicco, 1986; J. Merle Rife, 1987; Lorrie J. Bright, 1988; Mark J. Staszkiwicz, 1989; Anthony G. DeFurio, 1990; Marlin E. Hartman, 1991; Charles D. Cashdollar, 1993; Connie J. Sutton, 1994; Melvin R. Woodard, 1995; Donna L. Streifthau, 1996; Darlene S. Richardson, 1997; Mary Ann Cessna, 1998; Fran Pollock Prezant, 1999; Jerry L. Pickering, 2000; Steven F. Jackson, 2001; Veronica Toombs Watson, 2002; Mary E. Sadler, 2003; Linda S. Nelson, 2004; Gail S. Sechrist and Ramesh G. Soni, 2006; and Caleb P. Finegan, 2007.

Since its creation on July 1, 1983, the State System of Higher Education has developed a reputation for service, achievement, and vision. Strong student demand for the academic offerings at the fourteen public universities in the State System is evidenced by the growth in head count enrollment to more than 110,000 for 2007-2008. The State System universities are working to fulfill their potential as one of the largest human resource development infrastructures in the commonwealth.

Kenneth M. Jarin, chairman
Rep. Matthew E. Baker
Paul S. Dlugolecki
Daniel P. Elby
Ryan Gebely
Rep. Michael K. Hanna
Sen. Vincent J. Hughes
Marie Conley Lammando
Kim E. Lyttle

Joshua A. O'Brien
Christine J. Toretti Olson
Joseph M. Peltzer
C.R. "Chuck" Pennoni, vice chair
Guido M. Pichini
Gov. Edward G. Rendell
Sen. James J. Rhoades
Aaron A. Walton, vice chair
Gerald L. Zahorchak

State System of Higher Education
Chancellor Judy G. Hample

David Osikowicz, chairperson
Susan S. Delaney, vice chairperson
James C. Miller, secretary
Robert M. Hovanec, treasurer
Judy G. Hample, *ex-officio*
Chad E. Buckwalter
Mark A. Holman
David L. Johnson
Colleen M. Kopp
Rep. Samuel H. Smith
Carolyn P. Snyder
Gealy W. Wallwork

President:
Vice President:
Secretary:
Treasurer:
Directors:

David L. Reddecliff '82, Harrisburg
Suzanne M. Teele '82, Pittsburgh
Rep. James Wansacz '92, Taylor
Michael A. Staub '80, Harrisburg
Marcia L. Arena '85, Naples, Florida
Lewis C. Brindle '75, New York, New York
Cynthia Carter- Wedgewood '80, Wilmington, Delaware
Thomas E. Costello '88, West Chester
Sandra J. Diefenderfer '67, Great Falls, Virginia
Sandra M. Koepl '87, Pittsburgh
Matthew H. Konetschni '95, Washington, D.C.
Rep. Dave Reed '00, Indiana
Ellen S. Ruddock '66, Indiana
Elaine Sheetz '71, Great Falls, Virginia
Pamela Sledge-Coley '97, Houston, Texas
Gregory A. Steve '88, Pittsburgh

The Pennsylvania State System of Higher Education

Board of Governors

Council of Trustees

Alumni Association Board of Directors

The Symbols
of Learning

Participants in the commencement procession are attired in regalia that reflects a history and heritage that can be traced to the medieval universities of the eleventh and twelfth centuries. Modern academic regalia evolved from the kinds of apparel worn by monks and students in the Middle Ages to keep warm in the medieval castles and halls in which they studied.

Academic life as we know it today began in the Middle Ages, first in the church, then in the guilds. The teaching guild was the Guild of the Master of Arts, and the Bachelor was the apprentice of the Master; their dress was the outward sign of stature and responsibility. Academic regalia was thus a visible manifestation—in color and pattern and design—that unified those of common discipline and like purpose.

In later centuries, to preserve the regalia's dignity and meaning, universities set rules of academic dress. American universities agreed on a definite system in 1895 establishing a code of approved attire. In 1932 the American Council on Education revised this code, which, for the most part, governs the style of academic dress today. The principal features of academic dress are three: the gown, the cap, and the hood.

The Gown. The flowing gown dates to the twelfth century. Many think it was worn as protection against the cold of unheated buildings. It has become symbolic of the democracy of scholarship, for it completely covers any dress of rank or social standing. It is (with a few institutional exceptions) black for all degrees. Pointed sleeves indicate the bachelor's degree; long closed sleeves with a slit in the arm, the master's degree; and round open sleeves, the doctor's degree. The gown for bachelor's or master's degrees has no trimmings; the gown for the doctorate degree is faced down the front with velvet and has three bars of velvet across the sleeves, in the color distinctive of the faculty or discipline in which the degree pertains.

The official colors of the college may also appear in the gown or its decorations. The trustees and some administrators of IUP wear gowns of slate trimmed in crimson velvet.

The Cap. The freed slave in ancient Rome won the privilege of wearing a cap, and so the academic cap is a sign of the freedom of scholarship and the responsibility and dignity with which scholarship endows the wearer. Old poetry records the cap of scholarship as square, symbolizing the book, although other authorities claim that it is a mortar board, the symbol of the masons, a privileged guild. At the baccalaureate level the color of the tassel on the cap denotes the discipline. The tassel is moved from the right side of the cap to the left side upon conferral of the degree.

The Hood. In regalia, the hood is an inverted shield with one or more chevrons of a secondary color on the ground of the primary color of the college. The color of the facing of the hood denotes the discipline represented by the degree; the color of the lining of the hood designates the university or college from which the degree was granted.

The Mace is a ceremonial staff carried by the chief university marshal, who is the most senior faculty member. The chief university marshal opens and closes all academic convocations, such as Honors Convocation and Commencement. Artist and metalsmith Walter J. Kipp designed and constructed the mace for IUP in 1967. The design was created around the state seal, which was placed at the top of the mace. The large keystone which comes next symbolizes the state emblem, and on this keystone the letters IUP are placed. The handturned shaft is made of native Pennsylvania walnut.

The President's Medallion is worn by the president of Indiana University of Pennsylvania during academic convocations as a symbol of the leadership responsibilities vested in that office. The previous medallion, designed and created by professor emeritus Robert W. Hamilton, featured the university seal in a jeweled setting. Professor Hamilton fabricated that medallion in 1998 to replace the original medallion crafted by Walter J. Kipp in 1968 for the fifteenth president, William W. Hassler. The current medallion was crafted at Wendell August Forge. President Tony Atwater was the first president to be inaugurated with the current medallion.

- Eberly College of Business and Information Technology – beige tassels
- School of Continuing Education – white tassels
- College of Education and Educational Technology – light blue tassels
- College of Fine Arts – brown tassels
- College of Health and Human Services – green tassels and maroon tassels
- College of Humanities and Social Sciences – white tassels
- College of Natural Sciences and Mathematics – gold tassels

The following is a list of colors established by the Intercollegiate Code to represent the different departments of learning:

Maize	Agriculture
Lilac	Dentistry
Copper	Economics
Light blue	Education
Orange	Engineering
Brown	Fine Arts, Architecture
Russet	Forestry
Maroon	Home Economics
Peacock blue	Public Administration
Crimson	Journalism
Purple	Law
Lemon	Library Science
Green	Medicine
Pink	Music
Apricot	Nursing
Silver gray	Oratory (Speech)
White	Arts, Letters, and Humanities
Olive green	Pharmacy
*Dark blue	Philosophy
Sage green	Physical Education
Salmon pink	Public Health
Gold yellow	Science
Citron	Social Work
Gray	Veterinary Science
Scarlet	Theology or Divinity
Sapphire	Business Administration

*Includes Doctor of Philosophy degree in all fields except those listed here

- Dr. Allan Andrew, Biology, 32 years at IUP
- Dr. Gary Bird, Music, 36 years at IUP
- Chef Timothy Brown, Culinary, 7 years at IUP
- Dr. Gerald Buriok, Mathematics, 37 years at IUP
- Dr. Victor Drescher, Spanish, 35 years at IUP
- Dr. Judith Duffy, College of Education and Educational Technology, 22 years at IUP
- Dr. Mohamed Ghobashy, Accounting, 31 years at IUP
- Dr. Jerry Gebhard, English, 22 years at IUP
- Dr. Kenneth Hershman, Physics, 35 years at IUP
- Dr. Foster Jones, French/German, 35 years at IUP
- Dr. Ronald Lunardini, Student Affairs in Higher Education, 35 years at IUP
- Dr. Barbara Marquette, Psychology, 30 years at IUP
- Dr. Gordon Thornton, Psychology, 36 years at IUP
- Dr. Frank Viggiano, Human Development/Environmental Studies, 33 years at IUP

New
Faculty Emeriti

Honorary Degree Recipients

Commencement Committee 2007-2008

Albert E. Diem (deceased)	Doctor of Letters	1968	
Agnes Sligh Turnbull (deceased)	Doctor of Letters	1974	
James Stewart (deceased)	Doctor of Letters	1974	
Samuel R. Loboda (deceased)	Doctor of Letters	1975	
Jean Daugherty	Doctor of Letters	1976	
James Schlesinger	Doctor of Laws	1976	
George M. Leader	Doctor of Laws	1977	
Patrick F. McCarthy (deceased)	Doctor of Laws	1978	
Arthur J. Rooney (deceased)	Doctor of Laws	1978	
S. John Davis	Doctor of Laws	1980	
Frank Gorell (deceased)	Doctor of Letters	1980	
Willis E. Pratt (deceased)	Doctor of Letters	1981	
Steve R. Domen	Doctor of Laws	1981	
Charles J. Potter (deceased)	Doctor of Laws	1982	
Andre Previn	Doctor of Letters	1982	
Ralph W. Cordier (deceased)	Doctor of Letters	1983	
Dick Thornburgh	Doctor of Laws	1983	
Samuel W. Jack, Jr. (deceased)	Doctor of Letters	1984	
Lawrence A. Cremin (deceased)	Doctor of Letters	1984	
Malcolm Cowley (deceased)	Doctor of Letters	1985	
William G. Kegel	Doctor of Laws	1986	
E. James Trimarchi (deceased)	Doctor of Laws	1987	
John Campbell Bruce (deceased)	Doctor of Letters	1988	
Tito Capobianco	Doctor of Letters	1988	
Lorin Maazel	Doctor of Letters	1989	
Ernest L. Boyer (deceased)	Doctor of Laws	1989	
Sandra Day O'Connor	Doctor of Laws	1989	
Richard C. Wallace, Jr.	Doctor of Letters	1990	
David McCullough	Doctor of Letters	1991	
Paul A. Volcker	Doctor of Laws	1991	
Fred McFeely Rogers (deceased)	Doctor of Humane Letters	1992	
Clifton R. Wharton, Jr.	Doctor of Laws	1992	
Paul A. Samuelson	Doctor of Letters	1993	
Robert P. Bozzone	Doctor of Public Service	1993	
Oscar Arias	Doctor of Laws	1994	
Charles R. Fuget	Doctor of Public Service	1995	
Abraham J. Twerski	Doctor of Laws	1995	
John P. Murtha	Doctor of Laws	1996	
Gilbert M. Grosvenor	Doctor of Laws	1998	
Robert E. Cook	Doctor of Laws	2000	
Christine J. Olson	Doctor of Laws	2002	
Admiral James M. Loy	Doctor of Science	2005	
A.T. (Tim) Cejka	Doctor of Science	2005	
Daniel A. Griffith	Doctor of Science	2006	
Richard W. Macedonia	Doctor of Laws	2006	
Robert C. Wilburn	Doctor of Laws	2007	
Randall Silvis	Doctor of Letters	2007	
Andrea L. Alsippi			Donna M. Griffith
Jeannie M. Broskey			Nicholas E. Kolb
Kyle M. Campbell, cochairperson			J. Douglas Miller
Jessica E. Carson			John A. Mills
Kenneth E. Ciroti			William P. Montgomery
Katie M. Cook			Fred J. Owens
Todd D. Cunningham			Eugene F. Pounds
Robin A. Gorman			Robert J. Simon, cochairperson
Mary F. Greb			Shari A. Trinkley
			Paula Witherow

Flute	
Christine Douglass*	
Jess Hohman	
Kari Hunter	
Erin Moscony	
Adrienne Radesky	
Angie Sollenberger	
Dave Verno	
Oboe	
Amy Leonard (English horn)	
Nicole Neidlinger	
Katelyn Olsen	
B-flat Clarinet	
Lindsay Barker	
Amanda Crane	
Diane Cihonski	
Lauren Delesky*	
Andrew Gross	
Lauren Koharchik	
Peter Tresky	
Mark Yochum	
E-flat Clarinet	
Elizabeth Mahovsky	
Bass Clarinet	
Tracey Baker	
Cody Parker	
Bassoon	
Brad Behr*	
Jason Maholic (contra bassoon)	
Scott Ziegler	
Alto Saxophone	
Justin Canzano	
Justin Polyblank*	
Tenor Saxophone	
Ami Bensinger	
Baritone Saxophone	
Will Gillespie	
Trumpet	
John Byron	
Andy Giles	
Jim Johnson	
Jeremy Leidhecker	
John Powlison*	
Nate Sloyer	

Horn	
Katye Clogg*	
Elissa Davis	
Kim DelVecchio	
Christopher McAllister	
Nina Russo	

Trombone	
Greg Chenoweth	
Andy Klick*	
Tim Knickerbocker	
Nick Lenio	

Euphonium	
Dan Kerstetter	
Grant Shearer	

Tuba	
Justin Beish*	
Steve Fassnacht	
Jon Wylie	

Percussion	
Sarah Benson	
Jeremy DeLuca	
Tiffany Gump	
Kevin Haile	
Meghan Johnson	
Dave Stockton	
Vince Wallace	
Christopher Wengert*	

Piano	
Jennifer Barton	

String Bass	
Mike Majurski	

Band Staff	
Amanda Crane	
Katye Clogg, Graduate Conducting Associate	
Vincent Du Beau, Graduate Conducting Associate	
Dan Kerstetter	

*Indicates section leader

Members are listed in alphabetical order to emphasize each individual's importance to the ensemble.

IUP Wind Ensemble

Department Ceremony Locations Spring, 2008

Accounting.....	Eberly Auditorium - 8:00 a.m.
Adult/Community Education.....	Refreshments, Eberly 1st Floor Atrium/Patio 7:30 a.m. - 9:45 a.m.
Anthropology.....	Friday, May 9, Stouffer Auditorium - 6:00 p.m. to 10:00 p.m.
Applied Mathematics (B.S. and M.S.).....	HUB - Susquehanna Room - 2:15 p.m.
Applied Physics.....	Stright Hall, Rooms 226 & 229 - 8:30 a.m.
Art Education.....	Weyandt 32 - 8:30 a.m.
Art.....	McVitty Auditorium, Sprowls Hall - 2:15 p.m.
Biochemistry Program.....	McVitty Auditorium, Sprowls Hall - 2:15 p.m.
Biology and Biology Education.....	Keith Hall, Room 134 - 9:00 a.m.
Biology Family Medicine.....	HUB - Susquehanna Room - 8:45 a.m.
Biology Pre-Med.....	HUB - Susquehanna Room - 8:45 a.m.
Biology Pre-Vet.....	HUB - Susquehanna Room - 8:45 a.m.
Chemistry.....	HUB - Susquehanna Room - 8:45 a.m.
Communications Media.....	Weyandt 208 - 9:00 a.m.
Computer Science.....	Zink Hall, Gym A - 8:30 a.m.
Counselor Education.....	HUB - Allegheny Room - 2:30 p.m.
Criminology.....	Beard Auditorium, Stouffer Hall - 2:15 p.m.
Disability Services.....	HUB - Ohio Room - 2:30 p.m.
Earth Science.....	Zink Hall, Gym B - 2:15 p.m.
Economics.....	Planetarium, Weyandt 134 - 9:00 a.m.
Education of Exceptional Persons.....	Sally Johnson Auditorium - 8:00 a.m.
Education of Deaf and Hard of Hearing Persons.....	Zink Hall, Gym B - 2:15 p.m.
Educational and School Psychology.....	Zink Hall, Gym B - 2:15 p.m.
English.....	Stouffer Hall, Room 138 - 8:30 a.m.
Environmental Health.....	Crimson Event Center - 2:15 p.m.
Finance and Legal Studies.....	HUB - Susquehanna Room - 8:45 a.m.
Food and Nutrition.....	Alumni Auditorium, Eberly College of Business - 9:00 a.m.
French.....	Refreshments, Eberly 1st Floor Atrium/Patio 7:30 a.m. - 9:45 a.m.
General Science Education.....	Zink Dance Studio - 8:30 a.m.
Geography.....	Pierce Hall F-5 - 2:30 p.m.
Geology.....	Planetarium, Weyandt 134 - 9:00 a.m.
Geoscience.....	HUB - Delaware Room - 8:00 a.m.
German.....	Planetarium, Weyandt 134 - 9:00 a.m.
Government and Public Service.....	Planetarium, Weyandt 134 - 9:00 a.m.
Health and Physical Education.....	Pierce Hall F-5 - 2:30 p.m.
History.....	Keith Hall, Room 130 - 9:00 a.m.
Hospitality Management.....	Zink Hall, Gym A - 2:15 p.m.
Human Development and Environmental Studies.....	Pratt Auditorium, Pratt Hall
Human Resource Management.....	8:00 a.m., Refreshments; 8:30 a.m., Ceremony
Industrial and Labor Relations.....	Allenwood, Ackerman 3 & 4 - 8:30 a.m.
Interdisciplinary Fine Arts.....	Zink Hall, Gym B - 8:30 a.m.
International Studies.....	Memorial Field House, Main Gym - 2:15 p.m.
Journalism.....	Refreshments, Eberly 1st Floor Atrium/Patio 7:30 a.m. - 9:45 a.m.
MBA.....	Foster Dining Hall East - 8:30 a.m.
Management.....	McVitty Auditorium, Sprowls Hall - 2:15 p.m.
Marketing.....	Keith Hall, Room 130 - 9:00 a.m.
Math Education in Elementary and Middle School Education.....	Mainstage, Waller Hall - 2:30 p.m.
Math Education (Secondary).....	Memorial Field House, Main Gym - 2:15 p.m.
Mathematics.....	Refreshments, Eberly 1st Floor Atrium/Patio 7:30 a.m. - 9:45 a.m.
Military Science.....	Memorial Field House, Main Gym - 2:15 p.m.
MIS and Decision Sciences.....	Refreshments, Eberly 1st Floor Atrium/Patio 7:30 a.m. - 9:45 a.m.
Music and Music Education.....	Memorial Field House, Main Gym - 2:15 p.m.
Natural Science.....	Refreshments, Eberly 1st Floor Atrium/Patio 7:30 a.m. - 9:45 a.m.
Nursing.....	Stright Hall, Rooms 226 & 229 - 8:30 a.m.
Philosophy.....	Stright Hall, Rooms 226 & 229 - 8:30 a.m.
Physics.....	Stright Hall, Rooms 226 & 229 - 8:30 a.m.
Physics Electro Optics.....	Veterans Park (If rain - Historical & Genealogical Society of Indiana County, 621 Wayne Ave.) - 8:00 a.m.
Political Science and Political Science Pre-Law.....	Alumni Auditorium, Eberly College of Business - 2:15 p.m.
Professional Studies in Education.....	Refreshments, Eberly 1st Floor Atrium/Patio 7:30 a.m. - 9:45 a.m.
Psychology.....	Gorell Recital Hall, Sutton Hall - 8:15 a.m.
Regional Planning.....	Weyandt 107 - 8:30 a.m.
Religious Studies.....	Memorial Field House - Main Gym - 4:00 p.m.
Safety Sciences.....	McElhaney 101 - 2:30 p.m.
Social Science Education.....	Weyandt 32 - 8:30 a.m.
Sociology.....	Weyandt 32 - 8:30 a.m.
Spanish.....	Keith Hall, Room 130 - 9:00 a.m.
Speech-Language Pathology and Audiology.....	HUB - Ohio Room - 9:00 a.m.
Student Affairs in Higher Education.....	Crimson Event Center - 8:15 a.m.
Technology Support and Training.....	HUB - Delaware Room - 8:00 a.m.
Theater.....	Sutton, Room 437 - 2:30 p.m.
	Friday, May 9, HUB - Ohio Room - 6:00 p.m.
	Pratt Auditorium, Pratt Hall
	8:00 a.m., Refreshments; 8:30 a.m., Ceremony
	McVitty Auditorium, Sprowls Hall - 8:15 a.m.
	Friday, May 9, 4th Floor Sutton Hall, Spanish Department - 5:00 p.m.
	Zink Hall - Gym B - 2:15 p.m.
	Pratt Auditorium, Pratt Hall - 2:30 p.m.
	Eberly Room 409 - 8:30 a.m.
	Refreshments, Eberly 1st Floor Atrium/Patio 7:30 a.m. - 9:45 a.m.
	Mainstage, Waller Hall - 8:30 a.m.

