



**Special Collections and University Archives**

---

**Preface to Manuscript Collection #7  
The Fausold Family Collection**

**For Scholarly Use Only  
Last Modified November 9, 2018**

---

**Indiana University of Pennsylvania  
302 Stapleton Library  
Indiana, PA 15705-1096  
Voice: (724) 357-3039  
Fax: (724) 357-4891**

**Preface**  
**Fausold Family Collection, MG#7**  
**Indiana University of Pennsylvania**  
**Special Collections and Archives**  
**42 Boxes, 15 linear feet**

This project has been so organized as to give the reader, family member or scholar, quick access to various and specific components, as follows:

- Bio. Note, Scope, Provenance, Annotation, pp. 2-3
- General Table of Contents of Boxes, pp. 4-7
- Highly Annotated Container List of 42 boxes and their enclosed folders, pp. 8-118
- Epilogue and Rationale, Martin L. Fausold (II), son of former President of Indiana State Teachers College, 1936-39, pp. 120-121

*“I am often able to put together historical events with my knowledge of my ancestors. Lives pass quickly and our country is young. These two themes are constantly suggested to me.”*

John J. Driscoll, Judge, Ct. of Common  
Pleas, 10<sup>th</sup> Judicial District of PA,  
Greensburg, Pennsylvania  
Great Grandson of Mary Fausold Welty

*“It’s not fame that makes the family, it is the salt of the earth that grows its members—some are leaders; some also serve who only stand and wait.”*

Attributed to musings of Steven Mowers,  
husband of Marti Fausold Mowers and to  
Martin L. Fausold (II)  
Grandson of MLF (I); and grandnephew of  
Mary Fausold Welty



Driscoll & Fausold

M.L.F. (II) expresses gratitude to colleague, SUNY Distinguished Service Professor of Education Emeritus, Wayne Mahood, who encouraged the development of this annotated bibliography. In 2002 he traveled to IUP to help family thank the University for their efforts.

The Fausold Family is grateful to Indiana University of Pennsylvania and its Archival staff, especially Director Phillip Zorich, for their extreme archival efforts, nineteen years in the case of the latter.

**Fausold Family Collection, MG#7**  
**Indiana University of Pennsylvania, Special Collections and Archives**  
**42 Boxes; 14.5 linear feet**

Biographical Note:

The Fausold Family has long been associated with western Pennsylvania, especially Westmoreland County, where Samuel Fausold was born and educated. His experience in education included the following positions: Principal of East Huntingdon High School, Alverton, PA, 1910-14; Supervising Principal of the Irwin, PA schools, 1914-22; Superintendent of Ambridge, Pa. schools, 1922-30; Superintendent of schools at Monessen, Pa., 1930-35; Deputy Superintendent of Public Instruction, 1935-36; and President of Indiana State Teachers College, 1936-39. Although Fausold's tenure as President was marred by political machinations and was cut short by illness, major construction projects as well as significant changes in faculty, administration and curriculum occurred during his presidency.

Hon. John Fausold, grandfather of Samuel Fausold, was a public servant whose fifty-five year career, beginning in 1829, included five terms in the Pennsylvania House of Representatives, seven terms as Justice of the Peace in Westmoreland County and service as Revenue Commissioner of Indiana, Westmoreland, and Somerset counties in 1863, Sequestrator of the Somerset-Mt. Pleasant Turnpike, pioneer in Pennsylvania public education, and active school board member. Martin L. Fausold, son of John Fausold and father of Samuel Fausold, served as auditor, Westmoreland County Justice of the Peace, school board member and church leader.

Scope and Content:

The collection is primarily the papers of Samuel Fausold (1888-1948), but includes papers and documents of other various institutions, which he served. The files of his wife and sons, family biographies and genealogies, and the diaries of Samuel and his father are all included. Itemized inventories are available for the correspondence of George M. B. Fausold and Martin L. Fausold II and later additions of photographs. These inventories are located at the beginning of each section. The Fausold Family collection is separated into three series: Fausold family, Allied families, and photographs. The collection contains family letters, diaries, ledgers, scrapbooks, photographs, cassette tapes, books and memorabilia.

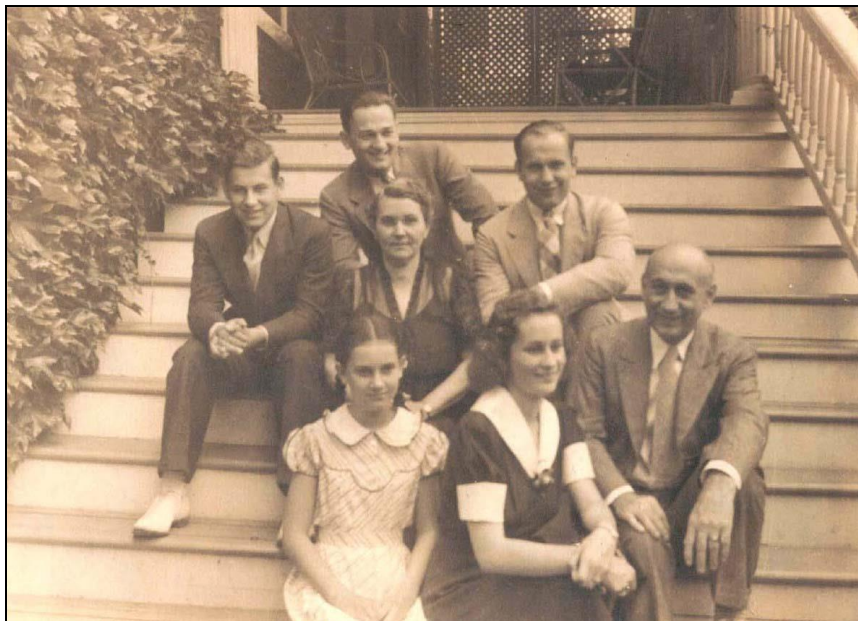
Provenance:

The Fausold Collection was created in 1984 when Martin L. Fausold II donated the papers of his father, Samuel, to the IUP library. Since that initial donation, many other gifts have followed from various family members. The Fausold Family Collection now represents an extended family and includes important contributions from the Fry family and from the Welty family. The collection has evolved into an experiment in family history that serves well to document the history of western Pennsylvania from the colonial era to the present.

Beyond the archival material, the family's efforts have extended to the donation of the portraits of John and Samuel Fausold, which hang in the Fausold Alcove in Stapleton Library. The foresightedness of the family includes the creation of an endowment to provide support for the collection and associated activities.

Annotation:

The collection has been annotated by Martin L. Fausold II, State University of New York Professor of History and Distinguished Service Professor, both as Emeritus. Martin Fausold also offers a "Table of Contents," and at the conclusion an Epilogue, "Rationales" for the "Collection."



*S. Fausold Family (Descendants of Martin L. Fausold I)  
Martin L. Fausold II, Samuel F. Jr., George MB, Edna Breegle,  
Alice Boyd, Patrice F, Samuel Fausold.*

Table of Contents of Boxes  
Box (partial) descriptions

Box 1      Genealogical charts; Genealogies: Weltys, Fausold/Fausold;  
Biographies: Samuel Fausold, Philip Freeman, Casper Fausold,  
Charles D. Fausold, Mary Fausold Welty, DAR application  
(This paragraph represents the work of Florence Weltys little  
but rich biography of her mother, Mary Fausold Welty.)

*The parlor in Mary's home for over forty years had only windows. From neither could Mary look up the road towards the mailbox, which was several hundred yards away and just past the Hones place. Mary's boys finally awoke to this deficiency, and placed a new window on the Weltytown side of the room. Mary's rocker sat near it, where she could sit with her sewing, her Bible or a magazine on her lap. She looked out of the window for the mailman, to keep tabs on the neighborhood, or see the rain or snow forming on Chestnut Ridge. A heating vent was in the floor near her feet and made it comfortable even on wintry days. That window went a long way to make her final years enjoyable.*

*The first stop for visitors was to see Mary, who if not in the kitchen, was probably in the rocker by her window.*

*When she died, she was laid out in the parlor, near her window.*

*- Florence Welty*



*Family Portrait of Roger Sherman Welty and Mary Fausold Welty and their children on the front steps of their second home in Weltytown on Welty Road in Weltytown, Pa.*

*On the top step, sitting next to Roger Sherman is a neighbor girl who was sitting in for the oldest daughter Ellen, who was married and not available for the picture.*



*Welty Brothers, Sons of Mary Fausold, in Blissfield, Mi.*

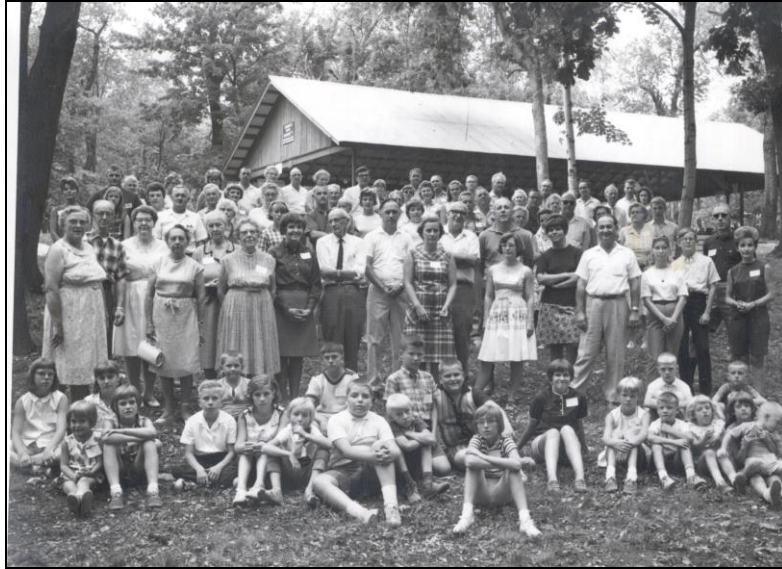
*Left to Right*

*Maurice, George, Bill, Cecil, Frank*

Box 2-3

Genealogies: Martha Fry Valentine Fausold, Reunions and programs: Welty/Fausold, 1966; Keuka College, 1985; Greensburg, 1991; Geneseo, 1995; Dedication of John and Samuel Fausold Alcove, IUP, 1995; IUP, 1998; IUP program, "From Normal Schools to Universities . . ." 2000, IUP





*Welty Fausold Family Reunion, 1966*



*(From Left to Right)  
Jane, Charles, William, Ciddy, George (Mac), Chuck, Margie, Samuel Fausold Jr.  
(Descendants of Martin L Fausold I)*

- Box 4 Books: M. L. Fausold and Samuel Fausold (mostly political); Harry Fausold (educational); Miscellaneous
- Box 5 Miscellaneous family: Ada Hays Fausold, Ada Fausold, Alice Fausold, Charles F. Fausold (handwritten letter), Charles D. Fausold, Charles J. Fausold (important article by), Cynthia Lynn Fausold (letters home from Columbia, S. A.), Edna Breegle Fausold (many letters to, on death of Samuel, etc.)
- Box 6-7 Very important correspondence of George M. B. Fausold (only family member away from home when Samuel Fausold was President of I.S.T.C.). Large MSS: family, lovers, friends, business (Fausold Dairy Co.), courtship (with Anne Shank). Very important rough typed conversation of George (Mac) with Maggie Slonacher descendant of Katherine, sister of John Fausold.
- Box 8 Miscellaneous of Harry and John Fausold; Miscellaneous: Charles R. Fausold letter home from France, WWI; John Fausold, Eulogy; 1817 Lutheran Church book (These are portions of sketches of John Fausold and his son, published by the American Historical Society in 1918.)



*John Fausold*

#### Sketch 1

*The son (of Casper Fausold) was the Hon. John Fausold, who was born in Bedford County, Pennsylvania, 1808. He came with his parents to Mt. Pleasant Township, and at the age of twenty years joined the Donegal Evangelical Lutheran church. He was a farmer by occupation, but served in public life for fifty-five years and held numerous offices of trust and responsibility. He was sequestrator of the Mt. Pleasant and Somerset turnpike; served creditably as a member of the Pennsylvania House of Representatives in 1846-1847-48, 1856, and 1857, and was appointed revenue commissioner in 1863 for the judicial district of Westmoreland, Indiana, and Armstrong counties. He served as a school director for twenty-one years and held the office of justice of the peace for the last thirty-one years of his life. As a public official he commanded alike the respect of his political friends and foes. In 1853 he married Ellen Freeman, who died ten years later. They were the parents of seven children, of whom Martin Luther Fausold was one. The Hon. John Fausold died November 14, 1884, at the age of seventy-six years, and a vast concourse of people were gathered to witness the entombment of his remains in Ridge Church Cemetery. An impressive and able funeral discourse upon that sad occasion was delivered by the Rev. A. D. Potts, D. D.*



*Harry Fausold & Anne Overly*

Sketch 2:

*Harry F. Fausold, a successful farmer of Mount Pleasant township and a highly respected member of the Evangelical Luther church, is a son of Hon. John and Ellen (Freeman) Fausold and was born on the homestead farm in which he now resides in, Mount Pleasant township, Westmoreland county, Pa., ----.*

*Harry F. Fausold owns the home farm of his father and has always been successfully engaged in farming and stock raising. Politically he is a Democrat and is serving his township as a school director. He and his wife are members of St. Paul's Evangelical Lutheran church, of which he is a deacon.*

*On October 26, 1882, he married Anna Overly, daughter of J. G. Overly. They are the parents of two children: Lucien Clyde, born September 1, 1888, and Charles Royce, born August 18, 1896. Subsequently, daughter, Josephine was born, 1900.*

- Box 9 John Fausold law book, General Laws of PA, 1846; PA House of Rep.; John Fausold Justice of Peace (Dockets), (mid-19<sup>th</sup> Century)
- Box 10 John Fausold Justice of Peace Dockets (continued): Marti Fausold-Mowers, doctoral dissertation
- Box 11 Martin L. Fausold diaries, 1873-1911 (transcribed), ONLY picture of John Fausold's children (Martin, Harry, Mary, Martha), MLF handwritten diaries, 1873-1910
- Box 12 Typed transcriptions of diaries in Box 11
- Box 13-15 Martin L. Fausold early 20<sup>th</sup> Century miscellaneous goods, 1880-1895
- Box 16 Fausold, Martin L. (II), son of Samuel, letters, scrapbooks, research materials: MLF (II), WWII; letters home WWII (nearly all theatres); Research materials (his invasion of S. France, 1944); MLF (II) research materials for 125 Anniversary, IUP, 2000; Diaries, 1998-2002 (topical notations on side): wife's Alzheimer's, some national current events; MSS: MLF (II), Professor of History, SUNY Cortland, 1952-1958; SUNY Geneseo, 1958-1992; MLF (II) statement to IUP 125Anniversary
- Box 17 Important letter from IUP regarding "substandard (ISTC) teachers, including Jeanne Ackerman," who was to have retired, 1936, six months before Fausold became President of ISTC. Her removal in 1938 was cause to celebrate, which led to "political" removal of Fausold as President, ISTC, 1939; Newsclippings, MLF (II), MLF (II) 1954 political campaign; correspondence MLF (II) NEH Seminar, 1979
- Box 18 MLF (II) scrapbooks, WWII (on loan to Cynthia Lynn F. Schwanz) and as President, Blairsville Kiwanis Club, 1949
- Box 19 Books by MLF (II): biographies of Gifford Pinchot, J. W. Wadsworth, Jr., Herbert Hoover, and U.S. Const. Re. Presidency, Presidency of C. Hoover.

- Box 20 MLF (II) materials: yearbooks, scrapbook, tribute to MLF (II), MSS, S. F. Jr.
- Box 21 Boxes 21-30 are the heart of the Fausold Collection and cover of mostly the professional career of Samuel Fausold, 1911-1939, where he served in several western PA superintendence's (Irwin, Monessen, Ambridge) and Deputy Superintendent, PA, and President, Indiana State Teachers College. (He had been candidate for Presidency, Slippery Rock State Teachers College, and Supt., PA Dept. of Public Instruction). Important here in Inaugural Address as Pres., ISTC (to be lead article in School and Society), etc.
- Box 22 Important information on "Ambridge Plan," intended to have public school students learn at their own pace, in the tradition of John Dewey. Other such national plans were the Winnetka and Dalton. Bio. Material; S.F. correspondence, pre-1930, 1930-1935, bio. of protégé of S. F.: C. Harmon Grose.
- Box 23 Pre-1936, 1936-1939 correspondence, S. F. Mostly professional correspondence. Includes correspondence regarding Jennie Ackerman. Her removal as head of Training School was "cause celebre" (Fausold removal as Pres., ISTC)
- Box 24 S. F. correspondence and MSS, largely during pres. Period and post-presidency period, ISTC
- Box 25 S. F. financial materials, 1940-1950 and Gettysburg College Bulletin, 1932-1938
- Box 27 S. F. Presidential Bulletin to ISTC faculty members. Included here Petition, Class of '38 defending S. F. against charges of partisan politics
- Box 28 S. F. marriage send off. More important are political efforts of S. F. to become Supt. Of Dept. of Public Instruction. Also, S. F. Ph.D. dissertation, "A Study of the Comparative Effectiveness of Single and Double Classes when Taught by an

Individualized Technique.” News accounts of S. F. Pres., I.S.T.C.

Box 29 Over 500 pages of Pa. Ed. Costs (Survey Commission, largely overseen by S. F. in 1936)

Box 30 Difficult to read diaries of Berkey Boyd, Uncle of Edna Breegle, who gave niece away in wedding. Important Republican, Gov. Gifford Pinchot’s Sec. Of Properties and Supplies. Some materials on Westmoreland County Judge, John Driscoll, great grandson of Mary Fausold Welty.

Box 31 Imp. Fry (Martha Fausold Wing) bio. materials. Imp. correspondence of Anne Shank, ISTC student who married G. M. B. Fausold (Mac)



*Martha Fausold (Daughter of John F.) Family*

*(Reading Left to Right)*

*Leo, Father Jonathan Baldrige, Mother Martha Fausold Fry,  
Baby Nevin Fry, Effie Fry, Grandmother Lydia Shields, Emma Jane Fry,  
Mary May Fry, Ellen (Nellie) Fry, John Edward Fry,  
Standing on the porch: Man Jacob Lisbon and Lady Mary Craner.*





*1<sup>st</sup> girl on right- Nettie Overly Marshall, 4<sup>th</sup> girl from right- Anna Overly Fausold. John Fausold's Children – Boy in front row with hat is Harry. Fourth boy from right in back is Martin L., Girl right end, second row is Mary. Fourth girl from Right, 2<sup>nd</sup> Row is Martha.*



*Only Image of four children of John Fausold*



## **Box 1**

### **General Fausold Family- Introductory Box (Chart and Genealogies of four branches of family, those of Mary, Martha, Martin Luther, Harry)**

(Because of confusion, occasional abbreviation as follows:

Martin L. Fausold = MLF

Martin L. Fausold II = MLF II (grandson of MLF)

#### **Folders:**

1. Genealogical charts of Fausold's (six generations), 18<sup>th</sup>-20<sup>th</sup> Centuries;
2. Fausold ancestors and their lineage. A timeline researched by M.L. Fausold II, January 2000. Chart of southwestern Pennsylvania.
3. Frank Welty and His Ancestors (1989) by Paul Welty, son of Frank Welty, grandson of Mary Fausold Welty. Important descriptions of Welty family members. (Prepared by Martin L. Fausold II)

(Partial comment of Paul Welty about his grandmother, Mary Fausold Welty [1854-1948] and relationship of grand nephew MLF (II) to both.)

\* \* \*

*Of all the descendants of the Honorable John Fausold – hundreds such by 2002 – none has attracted the attention, as does the long life of his daughter, Mary, excepting her father. And, for all the adoration poured out on John Fausold, Mary, in the family's long history, seemed to be the most beloved. Martin Luther Fausold (2<sup>nd</sup>), her grand nephew, learned the same from his own remembrance over his lifetime. Most especially, grand nephew Martin Luther learned about Mary Fausold Welty from his late 1900s organization of Fausold/Welty family conclaves; from his placement of family papers in the archives of the Indiana University of Pennsylvania; and, by his contact with many of Mary Welty's descendants, especially, Paul, Robert and Duane "Buck" Welty; Lucy Newhouse and John Driscoll.*

*- Paul Welty*



*Sally F Jones, Paul Welty, Martin Fausold,  
Descendants respectfully of Harry, Mary, Martin L.*

3A. 2002 typed conversation, Judge J. Driscoll & MLF (II)

*"I am often able to put together historical events with my knowledge of my ancestors. Lives pass quickly and our country is young. These two themes are constantly suggested to me." – John J Driscoll*

4. The Fausold/Fausold Family in America (1989) by Priscilla Fausold Weir, 86 pp. (Newspaper account of Charles D. Fausold at his death at age 80. He was the son of MLF.)



*Charles D. Fausold, Son of Martin L. Fausold I*

WATKINS EXPRESS – September 2, 1970

*Charles Fausold Dies at 80*

*Charles D. Fausold of Valois, retired Schuyler County Social Services commissioner, died Sunday at Schuyler Hospital in Montour Falls after a short illness.*

*Mr. Fausold was a schoolteacher and administrator for 33 years and also peace justice for the Town of Hector during his career.*

*He was born in 1880 at Latrobe, Pa., graduating from Gettysburg College in 1912 and receiving his master's degree from Syracuse University in 1922.*

*Mr. Fausold taught from 1913-14 at the former Starkey Seminary which became the Lakemont Preparatory School and later served as principal at schools in Elizabethtown, Perry and Manlius.*

*After his retirement from education, Mr. Fausold presided at a . . . retired as social services commissioner after a 11-year career in that post. He had been scheduled to step down a year earlier but was asked to stay on until an approved successor could be named.*

*Besides his widow, the former Miss Eleanor Gillmor of Hector, Mr. Fausold is survived by a daughter, Mrs. William Weir of Chalfont, Pa., a son, William Fausold of Seneca Falls, and four grandchildren.*

*Contributions in his memory may be made to the Schuyler Hospital Building Fund or the Hector Presbyterian Church Memorial Fund.*

5. Supplement 1 to #4
6. Philip Freeman of Westmoreland County (1999) by Paul Welty and Rebecca Welty Kaminsky, daughter of Welty genealogist, Paul Welty; thorough and lengthy and important supplementary biography.
7. Biography of Philip Freeman, Revolutionary war fame, two typescripts and associated documentation by Rebecca Kaminsky.
8. "A Synthesis of Hyacinths and Biscuits," by Patricia Fausold Sheaffer; charming, illustrated, abbreviated biography of Samuel Fausold family; also covers time of Samuel Fausold retirement in Scottdale, PA. (This is a delightful short part of the biography.)



*Patricia Howell  
Fausold*

*Daughter of Samuel Fausold*

*HYACINTHS as lovely as sharing confidences with dear Mother; or a rowboat ride on Lake Seneca, alone with the sunset; or the face of new Baby Alice in the arms of Mother who rocked at the window of the first-floor bedroom in Scottsdale; or a biggest brother who would pay me unexpected visits at the Indiana college dormitory and generously give me a \$5 bill, a small fortune then, for my pleasure; or a big Brother Mac who would hear my girlish secrets with understanding heart; or a “near twin” brother with whom I could share the joy of outdoor play on lengthening summer evenings or with whom I could share an afternoon movie in the days of silent film when I was proudly able to read to him the subtitles he could not yet understand; or a day in Scottsdale in our later years when both Mother and Father were well enough at one time to share the joy of their first grandchild.*

*- Patricia H. Fausold*

9. Casper Fausold, handwritten account by Samuel Fausold. 3 leaves.  
(Portion of handwritten biography of Casper Fausold written by great grandson, Samuel Fausold.)

*Casper Fausold, by Samuel Fausold, great grandson*

*Casper Fausold (Fausold) was born in the upper Rhine Valley in the Palatinate . . . He probably came from the region near Badeu, Germany or from Badeu itself. This is a fertile region. The name Fausold is spelled variously. It never has the u in the old German records. It would appear that Casper or John inserted the u in order to retain the German pronunciation of the name. The name Fausold appears in Wagner’s Opera*

*(the Hiebelungen). In this opera, Fasoldt is a giant. This is in keeping with American tradition as Casper and John were both big men. The Fausold's of the 19<sup>th</sup> century were often referred to as big Fausold's. The 19<sup>th</sup> century Fausold's would include Casper, his son John, and John's two sons, Martin Luther and Harry Foster. – Samuel Fausold*

10. Bio, Martin Luther Fausold I by Samuel Fausold, 1945. Six typed pages.



11. Charles D. Fausold--Typed, lengthy transcript of conversation with MLF II, 1965, Geneseo, NY. Very strong (2 days of conversation) (Small portion of lengthy Charles D. Fausold – MLF (II) transcription, largely about home on the Lycippis, Pa. Farm and later. This portion is regarding the “death scene” of Samuel Fausold. Thus, the reader can catch the depth.)

*The Death Scene of Samuel Fausold I*  
*By Charles D. Fausold*

*We got him home and he wouldn't lie down. He said, "I can't lie down, daren't lie down." Of course, he was uneasy and I can see him yet. He stood by the dining room table and with his hands on the edge of the table, he kept raising himself on his toes up and down, up and down. He did that for a couple hours. He was apparently afraid to sit down. That's where he could get the best relief, in that position. And of course he didn't look a bit well, and so finally, though he just got so tired he had to sit down. We put a cushion in a big chair right by the table and he sat down right there, right where he'd been standing, and he sat there the rest of the night. And*

*next morning I came in, he was still sitting there, and he spoke to me and asked me about going to work. I was out at Sampson—the bookstore—and I said, “I’m not going today. I don’t need to go. I’m due some vacation.” And he didn’t talk much—but some—and didn’t eat anything; and Edna sat there in a little rocker right next to him. She was all worn out. She had sat up all night, too. And we called the doctor, and the doctor said he would be up—or his wife did—that she’d get word to him and he’d be up within an hour. Well, he didn’t get there for longer than that and, meantime, Alice was sitting on the couch, right next to a chair. Sam got up out of his chair and motioned to Alice to get away; and he sat down on the edge of the couch. He lay down, but he didn’t even have strength to lift his feet off the floor, and he passed away right there. – Charles D. Fausold*

12. Mary Fausold Welty, memoir by daughter Florence Welty of her mother at time of her death, c1948, entitled, “Grandma Welty.” 13 pp. typed. Mary Fausold Welty, daughter of John Fausold. (This is only a portion of the memoir. Florence wrote glowingly about her mother.)

*I sat in the third pew of my mother’s church, my body numb with the depressing melancholy which enveloped me, and listened to her minister say of her: “Grandma Welty has attended this church for over eighty-seven years. . . . She lived with courage on the brink of eternity.”*

\* \* \*



*Florence Welty*



*Mary Welty*

*It required almost superhuman endurance and great courage to live and serve as she did, but mother must have had both to have endured the hardships and still live to be ninety-three years of age. She rose long before daylight every morning to kindle the fires that the house would be warm before the small children awakened. She not only cooked the meals for her large family, but for “hirfed hands” as well.*

*There was never quite enough money for food in those days but she always managed. She could whip up a batch of biscuits to go with a kettle of beans. She could “throw” a flapjack when the bread ran low, and a pot of sauerkraut and dumplings appeared as if by magic. She baked her own bread and cakes and cookies; she often picked the cherries and gathered the apples, which went into her famous pies. She worked her own garden, raising vegetables to put up for winter. She was always proud of her rows of gleaming jars, filled with every kind of fruits and vegetables. – Florence Welty*

13. DAR Application (American Revolutionary) of Grace Fausold Horner. Documents Fausold Philip Freeman roots.

### **Box 1A**

1. Samuel Fausold: The Influence of Politics, Religion and Education on the Professional Life of a Pennsylvania Educator (1992) by Margaret Fausold Mazon, granddaughter of Samuel and great-granddaughter of MLF; University of WV doctoral dissertation (Margaret Fausold Mazon conclusion of dissertation on Samuel Fausold.)



*About what does this dissertation on the life of Samuel Fausold inform us? Essentially, it is about an amalgamation of religion, career and personal relations. Perhaps, more basically, Fausold’s life reflected a sense of spirituality, professional education and public service, and these tenets as specifically manifested by his practice of German Lutheranism, progressive education and political life, in the service sense of that latter term. Because these tenets were so naturally interdependent in the life of Samuel Fausold, they explain the manner of his career’s influence, in the center of which was, broadly speaking, curriculum. One must believe that the efforts of people like Samuel Fausold resonated in various places and in*



*various ways; they questioned and sought to re-create change. This call for change in education is an integral part of the mosaic that is public education in the United States.*

2. Genealogy, Fausold family, by Priscilla Fausold Wier, 1985
3. Script and extensive accompanying MSS of Welty family
4. Massive IUP Home Page, Computer, Fausold family, by Martin Luther Houser, daughter of Alice B. Fausold & godson of Martin L. Fausold (II)
5. Very important W.E. Pritts I, re: Pritts family development and involvement in Pa. feed business in 20<sup>th</sup> century, descendants of Martha Fausold, daughter of John Fausold (Summary statement by William Pritts III, 2003. Here included also is conversation of MLF (II) and Charles F. Fausold with the brothers Pritts.)

The Pritts Feed Business by William Pritts II, 2003



*(From left to right, beginning with top row)  
Esthar Pritts Newlin (83), Clarence Skip Pritts (89), Baldrige “Bud” Pritts  
(91), William Pritts (92),  
Ferne Pritts Deceased (86), Dorthy Pritts Coffman (80)*



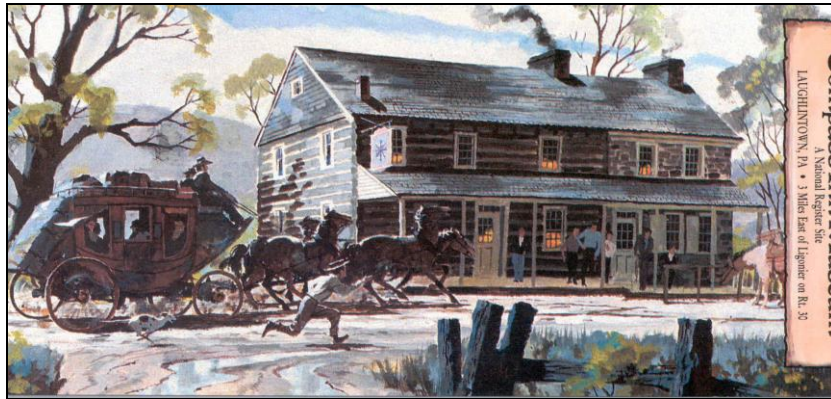
*The John Hart Pritts family has been heavily involved with the animal feed and supply business in southwestern Pennsylvania since the early part of the 20<sup>th</sup> century. It began when John (J. H.) and Ellen (Nellie) Fry Pritts and their baby son William moved to Iron Bridge, just south of Mount Pleasant, about 1912. At that time J. H. joined Bill Bungard, his brother-in-law, in a general merchandising store adjacent to a double house, which the Pritts and Bungard families shared. J. H. later took over Bungard's interest in the store. About 1926 he established a livestock and poultry feed business in the stable behind the store building which he operated with his oldest son William Eugene (Bill) Pritts. They were able to get feed delivered in boxcars since they were located adjacent.*

*Today, Pritts Feed has added a large grain processing and storage operation just east of Mount Pleasant. The company is the largest purchaser of grain in southwestern Pennsylvania. It is the oldest business in Mount Pleasant and is currently managed by William D. Pritts, Bill's grandson. It has been under the ownership of only two families for over 157 years and is the oldest continually operated business in Mount Pleasant. In 1988, at the age of 78, Bill bought the feed mill in Berlin, Pennsylvania and operated it for ten years when he sold it to Dale White, one of his employees. At age 91, Bill still goes into the feed mill six days a week. He told a newspaper reporter in 2001, "After 60 years of doing this, what am I supposed to do? Stay home in bed? This is like my second home."*

*- W. E. Pritts II*

### **Box 2 & Box 3, Genealogical Materials**

1. Martha Fry Genealogy, by William E. Pritts, I, descendant of Martha Fausold Baldrige Fry. Brief but very thorough account of Pritts Fred, business.
2. Genealogy of Valentine Fausold and his descendents compiled by Rev. John Calvin Fausold. Harrisburg, Pa: United Evangelical Church, 1915. Also five page typescript of the preface and introductory material and photocopy.
3. Bible record of Samuel Fausold, marriages, births, deaths, misc., n.d.
4. Compass Inn material--Laughlintown, PA, built by Philip Freeman in 1799. Inn important home of John Fausold family friends, Freemans.



### *Compass Inn*

John married Ellen Freeman, great granddaughter of Philip Freeman-- Philip Freeman fought in four American Revolution battles, including Stony Point (viewed as most well executed battle in the Revolution.) P. Freeman seems clearly to have been with Washington at Valley Forge.

5. Family conversation – Grandchildren of MLF, knew family homestead--George M. Fausold, Fred Daniels, and Priscilla Fausold Weir--Cousins here talk about family life in Lycippis, PA. (Fred Daniels literally grew up in Lycippis home.) July 13, 1978, 9 pages and July 26, 1981, five pages.
6. Important miscellaneous family--Lineage materials: Welty pictorial (important identifications, all but one a Welty, c1930s); origin of Doty name in Charles D. Fausold; charts and images, descendants of Valentine and Casper Fausold, respectively to Elizabeth Plonk and MLF II, fellow parishioners in Central Presbyterian Church, Geneseo, NY, in 2002.

### **Fausold Reunions**

7. Welty Family Reunion, August 7, 1966. Mamouth Park, Westmoreland County. Group photo and identifications.
8. Welty-Fausold Reunion, 1996, program and invitation.

9. Keuka College, NY--family reunion, etc.--Descendants of Martin L. Fausold I, Harry Fausold and Mary Fausold Welty, 1985. Many MSS, guest book, (letters, “scriptures”, important family documents selectively compiled by MLF II. Lengthy video discussions of Harry Fausold children--three branch spokespersons of two families (see Box 41). 1<sup>st</sup> such family reunion since 1968. See also next item for photos.

MLF (II) musings, GFR, Keuka College, 1985: (Posted here are MLF (I) partial musings about Great Fausold Reunion, Keuka College, 1985, the time descendants appeared together in reunion since the 1960s.)

*Is one a fool or a romantic to make as much as I do of some fifty souls having gathered together because in one way or another they were related to a gentleman who nearly two centuries ago was born and in time established our lineage? I think not.*

*During this Season, 1985, I ponder words for a Christmas greeting to express, in short, what I feel – the meaning to me of what I affectionately call, to my wife’s quizzical wonderment, The Great Fausold Reunion.*

*We met in Penn Yan, New York, at a college on Lake Keuka, on August 9, 10, and 11, a location named for Pennsylvania Germans who emigrated to places, such as upstate New York and western Pennsylvania, from Philadelphia where John’s father, Casper, landed in 1781. The original German settlers on Keuka Lake named the place for themselves and when they came, thus Penn Yan, short for Pennsylvania Yankees. Pennsylvania Germans, according to descendants of Valentine, Casper’s brother, came to William Penn’s commonwealth from the Palatinate in western Germany, the rich Rhine Valley, perhaps the most fertile in Europe. The Valley was rich in soil but far less in tranquility, having for decades been subject to the trials of war and the oppressions of leaders, including religious persecutions, causing tens of thousands to flee to the New World, most by way of the port of Philadelphia.*

*Casper left brother Valentine in eastern Pennsylvania and crossed the Allegheny Mountains, and began his family in Bedford, a frontier way station to the west. John, a son, and our forebear, was born in 1808 and rose to prominence in various capacities in Westmoreland County, “the first American frontier west of the Appalachian Mountains.” Most notably, John represented Westmoreland in the Pennsylvania legislature. He fathered four children, three of whom were represented by descendants at the GFR.*

*Time stood still at the GFR. For a moment we were a link to past and future. We spoke warmly of the children of John – as young ones present a half century hence may speak of us, in the presence of their children and grandchildren. So, the GFR spanned almost a quarter of a millennium, no little portion of the time of Christendom; and a time of changes wrought, without parallel in history.*

*- Martin L. Fausold II*

10. Photo album of two reunions. Greensburg, 1991 MLF descendants at home of G.M.B. Fausold “Mac”). See folder 8A for well-identified images. Fine photography by Charles J. Fausold. Also includes photos of the 1985 Great Fausold reunion at Keuka College.
11. Reunion. Geneseo, NY--Descendants of MLF and Harry Fausold; had reception at Hartford House, home of the Wadsworths, who first settled the valley, 1995; MLF II wrote biography of James W. Wadsworth, United States Senator, early 20<sup>th</sup> century.

### **Box 3 Folders**

1. Indiana University of Pennsylvania (Descendants of MLF and Harry Fausold and Mary Fausold Welty) 1998. Transcripts of talks at banquet, etc. (See Box 41.) MSS were exhibited in Archives. Rich materials. Fine group picture of 54 family members
2. Core Committee, 1999 of next generation to oversee Family Collection (George M. Fausold, Margaret Fausold Mazon, Martin Luther Houser, Marti Fausold Mowers, Charles J. Fausold)--correspondence and agenda. Charles J. Fausold wrote to MLF II: “IUP Collection now provides a physical and geographical focus for family history.”



### *Core Committee*

*Marti Mowers, Martin L Fausold II, George F, M L Houser*

3. Correspondence of Martin L. Fausold II and Alice Boyd Fausold Houser regarding their father's plaque in Ambridge, PA; family tour of IUP; correspondence to save John Sutton Hall, IUP
4. John and Samuel Fausold Alcove, IUP--1995--Portraits of both, biography of artist [Stanley Gordon], family correspondence of same; letters from Alums during S. Fausold presidency, ISTC; programs and images; see video, Box 32. MLF II reported that politics of PA public higher education, 1920-1970 had not been studied. IUP Pres. Pettit said IUP would get corner on such scholarship and tried to do so at 125<sup>th</sup> IUP Anniversary Celebration (See Folder 14).
5. IUP program, 125<sup>th</sup> Anniversary, "from Normal Schools to Universities . . ."--MLF II comments; IUP Magazine article; March 23, 2000, letter to panelists. See Box 11, Folders 26 & 27 MLF II researches MSS for attempt, unsuccessful, was to examine PA public higher education politics, 1930s-1980s.

### **Box 4 Books of Fausold Family**

#### **Lutheranism**

**MLF I and Samuel books. Both were committed Lutherans, doctrinally and in practice. Examples.**

### **Box 4 Books of Fausold Family** (cont.)

1. Lutherans in All Lands, 1846
2. Church Book for Use of Evangelical Congregations, 1846, 1869
3. Luther's Small Catechism, 1874
4. The Lutheran Pastor--1902, signed by MLF.
5. The Precious and Sacred Writings of Martin Luther, 1905-1906
6. Church Book for Use of Evangelical Lutheran Church, 1908

### **Political**

**M. L. Fausold I and Samuel read political materials prolifically.  
Examples.**

7. The First Battle--1896, by William Jennings Bryan (book read closely by MLF and his son, Samuel)
8. A Political Crime: The History of the Great Fraud--1885, signed by MLF.
9. Under Two Flags--1903, book of MLF regarding service of soldier under Napoleon and Lafayette in eastern PA in American Revolution.
10. Speech of Honorable John L. Dawson--1852, Congressman whose address John Fausold thought so important that he wanted his son, Harry, to inherit it.

### **Box 4 Folders** (cont.)

11. Masks in a Pageant--1939, by William Allen White (book of Samuel Fausold, given his son, MLF II. Book dealt with early 20<sup>th</sup> century political figures whose lives, son MLF II, learned about as an American historian.
12. Cycles of American History--1986, book by historian, Arthur Schlesinger, Jr., who refers to work of MLF II, especially on his scholarly work on Herbert Hoover.

### **Harry Fausold Educational Books**

**Harry and children relied on these basic educating works.**

13. Dean's Intermediate Arithmetic--1864, Estate of Charles R. Fausold
14. The New Union Spelling Book--1874, Estate of Charles R. Fausold
15. Brooks Primary Arithmetic--1876, Estate of Charles R. Fausold
16. Patterson's Advance Grammar--1887, Estate of Charles R. Fausold
17. School History of the United States--1887, Estate of Charles R. Fausold

### **Samuel Fausold**

**Purchased by Samuel Fausold while in college and presumably read then and thereafter.**

18. Modern Classical Philosophers--1908, signed by Samuel Fausold

### **Miscellaneous**

19. Old and New Westmoreland--1918, with some Fausold entries
20. War Memorial, Allegheny County Medical Society--1923, with entry of Dr. Clyde Fausold, WWI

### **Box 5 Folders**

**Miscellaneous Fausold Family: Ada, Alice, Charles D., Charles F., Charles J., Cynthia, Edna**

Folders:

**Fausold, Ada Hays and daughter Ada**



1. Handwritten letter from Ada to daughter, Ada poignantly describes her own deteriorating medical condition. (In 1995 a former Pittsburgh, Pa. Elementary student wrote as follows about Ada Fausold. [See letter in box.]): *"I will be forever grateful for Ms. Fausold for taking time to learn more about me than I know about myself, for giving me confidence in myself and helping me to direct my life. If I were asked to name five teachers who influenced my life she would be at the top."* (See total letter in box.) Official note re. Army Service, 1899 – 1901, Albert Danials 1<sup>st</sup> husband of Grace Fausold.

### **Fausold, Alice, daughter of Samuel Fausold**

2. Commencement program, Scottsdale High School, n.d., c1944. Autograph book of Alice Boyd Fausold. Letter J. Ray Houser, re. Mother Alice B. Fausold's death.

### **Fausold, Charles D.**

3. Papers--"Long Walk" – article describing walk of Charles and Samuel Fausold home from Gettysburg College, c1910; Last letter to Charles Fausold from brother, Samuel Fausold, as President of Indiana State Teachers College, 1939; plus some fine bio. material regarding Charles D. Fausold retirement, teaching and death. (Also, see Box 1, Folder 11 for lengthy typed conversation with MLF II, 1965.) Also, "The Lakes Country," by Arch Merrill.



Portion of article, “The Long Walk,” 1910, by Charles Fausold, The Mercury, Gettysburg College. Because the brothers Fausold were low in funds they walked home for Spring break. Here is a portion of the article.):

*No matter how deplorable our condition we had to walk. We had no alternative. Our treasury, low at the start looked hungry indeed. So we kept on, twitting each other with the remark now disrobed of its early glamour, “This is the trip that’s to make us famous.”*

*At four o’clock of Tuesday afternoon we began the ascent of the Allegheny Mountains. At the base of the mountains we asked for a draught of water and they gave us hard cider. Of course we didn’t want the cider but the requirements of hospitality were inexorable. We drank and the mountain-top was reached as by a single bound. At 3.30 (of the next day) we began the descent which is so gentle as to be hardly noticeable. At six o’clock we were overtaken by two young men in a spring wagon. We were taken in and rode about four miles into Buckstown. These gentlemen were even more hospitable than our friends of the mountain. They too showed the best sides of their nature and pure old rye was offered us. Being college lads we were perfectly innocent of the effects of this drug and again we drank; again the requirements of mountain hospitality were inexorable. Oh! Forever shall the people of these mountains be my friends. Why friends, don’t go to Europe to climb the Alps; climb the Alleghenies.*

*-Charles D. Fausold*

#### **Fausold, Charles F.**

4. Commencement Program, Gettysburg College, c1950

#### **Fausold, Charles J.**

5. (Co-author, Article, “The Economic (1990s) Value of Open Space: A Review and Synthesis,” by Charles J. Fausold, Executive Director, Cornell Cooperative Extension Association of Schuyler Co., NY. and Robert J. Lillieholm, Associate Professor, Utah University. [Charles Fausold, son of William Fausold and grandson of C. D. Fausold, great grandson of MLF]).

*“ABSTRACT/Communities increasingly face development pressures that can irreversibly alter open space lands. While the monetary costs*

*and benefits of development are typically known, the corresponding values of natural lands are complex and difficult to measure. This paper reviews different concepts of economic value in relation to open space, describes methods for quantifying these values, and presents examples of each from published literature. Included are fiscal impact studies, market value, enhancement value, natural system value, use and nonuse value, production value, the revenue generated by open space-related activities, and various intangible values. These values are not universally present within a given community, nor are they quantitatively additive. However, a comprehensive consideration of the multiple values of open space will better inform community decisions about land conservation and development."*

*- Charles J Fausold*

**Fausold, Cynthia Lynn**

6. Correspondence (Numerous letters home from College of Wooster and from a semester abroad on Columbia, S.A.) 1974. Extensive correspondence. (Cynthia is daughter of MLF II.) News from Bogota, Columbia, S.A.

**Fausold, Edna Breegle**

6. Correspondence--Many fine letters from family and friends to Edna on death of husband, Samuel Fausold; also letters on Samuel Fausold retirement as President, Indiana State Teachers College; also correspondence on monies, 1948 to 1951



*Edna Fausold with Daughters Patricia (Standing) and Alice E.*

8. Financial Papers, 1942 to 1952 - Insurance, stocks, bonds, real estate, etc.
9. Financial Papers, 1942 to 1950 - Insurance, stocks, bonds, real estate, etc.
10. Financial Papers, 1951 - Insurance, stocks, bonds, real estate, etc.
11. Funeral Book--overflow signatures of attendees, 1948
12. Genealogy of family of Edna Breegle, wife of Samuel Fausold. Well done and thoroughly documented.
13. Will--Edna Breegle Fausold, 1951

## **Box 6 - Fausold, George M. B. "Mac"**

Correspondence: This is important and rich correspondence of Samuel and Edna Fausold to and from son, George M. B. Fausold (Mac), as a student at Penn State in the mid 1930's. It is particularly important because Mac was the only Samuel Fausold family member away from home in the critical years of his father's Presidency at ISTC (Indiana State Teacher College). The collection has both serious and amusing aspects, and a combination of both, as when the father wrote to his son, who seemingly gallivanted, *"Except for serious illness or death I do not want you to leave State College before Easter under any circumstances."* Mac was thinking, handsome, gregarious and great fun. He was so loved, of course. He was the natural leader of the children. Following his graduation, when his father retired, the two corresponded at length regarding Mac's professional dairy work.

Folders:

1. "Success Rules" for Mac by Samuel Fausold, November 11, 1939. Several pages. Important, explicit: (1) *Be clean and Christian*; (2) *Work hard*; (3) *Learn by observing*; (4) *Be fair*; (5) *Plan work*; (6) *Say something good about others, or nothing*; (7) *Right attitude*; (8) *Don't get lost in red tape*; (9) *Be businesslike in personal affairs*; (10) *As Exec. look ahead*; (11) *Remember all things are relative*; (12) *Be humble*; (13) *Remember, always room at top*; (14) *Understand that distance between success and failure is short*. Samuel Fausold, newly in retirement, Pres., I.S.T.C. – Samuel Fausold
2. Mac "scrapbook"
3. Mac Fausold. Correspondence, 1934-36.
4. 1935-1946  
(pp. 3-10: Family, lovers, friends)
5. 1937 (Love letter in total, written by Sally Young to Mac Fausold, Nov. 13, 1937. It is a classic letter of a 1930s lady lover. Mac was a Penn State student, an awesome leader of his younger brother MLF (II))

*Nov. 17, 1937, Tuesday night*

*Dearest Mac,*

*Well, here I am back in dear old Northampton again. If this letter sounds a bit screwy, it is because I'm trying to write this at Toto's, an eating shop, where there are so many girls all talking at once and so much smoke in the air that I can't think straight – not that I want to.*

*Honestly, I don't know how to begin to thank you for the wonderful week – and I had a marvelous time. It was such fun seeing you again. Every minute with you was just like heaven. Of course, I don't know what heaven is like, but it couldn't be any nicer. I had heard so much about Penn State house parties and always wanted to go to one, and now I really have.*

*Love, Sally (Young)*



*George M. B. Fausold (Mac)*

- 7. 1937-1941
- 7. 1938
- 8. 1939
- 9. 1940

10. 1941
11. 1942
12. 1943
13. 1943
14. 1944
15. 1945-1954--Correspondence regarding Fausold Dairy Co. (Partners: Mac & MLF II)
16. 1955-1961--Mac as teacher
17. 1962
18. poignant but undated
19. Correspondence, Mac and Ann, 1945-52.
- 20-21 Mac, letters from home.
22. Diaries, 1932-36.

**Box 7 - Fausold, George M. B.**

1. Letters from Ann Fausold estate. 2002.
2. Photos from Mac and Ann Fausold.
3. News Clippings, 1934-1938--of Mac, MLF II, etc.
4. Conversation with Maggie Slonacher--Very important lengthy conversation, Mac with Maggie, a descendant of Kathern Fausold, sister of John Fausold. It is a rich story of family in the hill country, the "Ridge." Many notes, corres., etc. (See map, Box 1, Folder 1: Chestnut Ridge.) Very important information gathered by Mac regarding Casper and sisters, Elizabeth, and Catherine Fasold Snivly.

Information, notes, transcription very rough but probably invaluable sources; taken at Casper Fausold home.

5. Governor George H. Earle signature--secured by Mac.
6. Miscellaneous material from George M.B. Fausold estate.

### **Box 8, Harry and John Fausold**

#### **Fausold, Harry, Children**

##### Folders:

1. Post card album.
2. Post cards Ada to Josephine.
3. H.S. graduate program headlining cousins Josephine Fausold ("By Products of War") and Margaret Welty ("America and the Movement for Democracy"). A WWI letter home from soldier Charles R. Fausold from France. Death notice and obituary of Dr. Clyde Fausold (Josephine, Clyde, Charles R. were children of Harry.) Charles F. Fausold, grandson of Harry, statement for 1998 GFR at IUP. Some small John Fausold political advertisements found in Harry's homestead. Important rough Harry Fausold Family.

#### **Fausold, John**

4. Biographical material--Casper and John Fausold, 1918
5. Church Book (Very important and precious 1817 Lutheran Church book), 1817. Written in German.
6. Partial eulogy, John Fausold:

(This is a portion of the sermon, "The Pious Dead," delivered on Sunday, November 16, 1884, at the funeral of Hon. John Fausold by Rev. A. D. Potts, A.M., Pastor of St. Paul's Evangelical Lutheran Church, near Pleasant Unity, Pennsylvania):

## WORDS ON THE DEPARTED

*Such have been the characteristic features of him, who lies before us today, shrouded in the cold embrace of death. It is meet and proper that I should at this time revert to the early history of the deceased. Indeed, his long and eventful life has given others, who are much older than myself, a fuller knowledge of what he has been. His works, however, follow him. Brother Fausold, whose sudden and sad death we chronicle today, lived a life of public trust and great usefulness. He was born in Londonderry township, Bedford county, Pa. on the 23<sup>rd</sup> day of December, 1808, and died at his residence in Mt. Pleasant township on the morning of November the 14<sup>th</sup>, 1884, at the advanced age of almost 76 years. Early in life he sought the Savior of mankind and showed a willingness to espouse His cause. When twenty years of age he was confirmed at Donegal, Pa., by Rev. Mechling, and thus identified himself with the Evangelical Lutheran Church. Let both old and young be more concerned about heaven than earth; more anxious about eternity than time; more ready to die than live; let them put on the whole armor of God, and stand as faithful soldiers of Christ till the battle and strife with sin are over. Let them "quit themselves like men;" be strong in the power and might of God, and when their night of death shall come their end will be one of joy and peace. May they live true Christian lives, die true Christian deaths, and realize true Christian hopes! Having lived thus, and having passed into the great beyond, their deaths will be, most assuredly, precious in the sight of the Lord. May God add His special blessing. Amen. – A. D. Pritts*

Florence F. Welty  
"The Sycamore Shack"  
Weltytown Road  
Mt. Pleasant, RD #1, Pa. 15666

7. Josephine Fausold books. Miss Flora Broom and Sinbad the Sailor.

## **Box 9 - General Laws of PA**

The General Laws of Pennsylvania: (Important because all of the laws of the state were in one volume. John Fausold name is inscribed on leather cover.) 1847.



House Journal, House of Representatives, Commonwealth of Pennsylvania.  
(All votes recorded, including John Fausold), 1849

Justice of Peace John Fausold Docket Book, 1867-1878. Bastardy, etc.

**Box 10- Invaluable 19<sup>th</sup> Century Justice of the Peace Dockets of John Fausold and Miscellaneous, Martha Fausold and Marti C. Fausold**

Justice of Peace John Fausold Docket Books, 1836-1866; 1855-1867.  
Important grass roots story of American judicial behavior.

**Fausold, John II--son of MLF (I)**

Folders:

1. Church books (gift of mother, Ada, to son John)
2. Letter from John's daughter-in-law, Min, wife of Harry Fausold, son of John Fausold; probably only letter from John's daughter-in-law.

**Fausold, Marti Clement, daughter of MLF II**

3. Educational materials, including her University of Rochester Doctoral dissertation on family counseling, School-Based Family Counseling, 1998 (This is an abstract--Marti Fausold-Mowers' dissertation which advanced the idea of student counseling in BOCES, on east side of Rochester)

*"The survey study investigated families' views of effectiveness in regard to school-based family counseling. For purposes of this study, effectiveness was defined as what aspects of a school family counseling program were viewed as helpful or not helpful by the families who have used the program. It is very unique, as demonstrated in the literature, to assist children and families with school related issues through family counseling which is provided*

*-Marti Fausold Mowers*

4. Poems and miscellaneous (including marriage ceremony of Marti Clement Fausold and Steven Mowers, conducted by Reverend J. Ray

Houser, husband of Alice B. Fausold Houser, daughter of Samuel Fausold

5. MLF II about her (Marti) various schooling

**Box 11 - Martin L. Fausold Misc. and Diaries, 1873-1911, transcribed**

**Fausold, Martin L.**

Folders:

1. Original marriage certificate MLF I - Ada bond, picture of John's children (Martin, Harry, Mary, Martha); invitation to MLF I, Masonic Temple, genealogy. Biographical and miscellaneous (official documents) 1876-1894Box 11 Folders (**cont.**)
2. Original handwritten diaries, Martin L. Fausold, mostly 1873-1910

**Box 12**

Typed transcriptions of diaries in Box 11.

**Box 13 - Store Ledgers**

Volume Store Ledgers of MLF I (Lycippis store and Justice of Peace Office) 1880-1895 (some food and dry goods items)

**Box 14 - Store Ledgers**

Volume Store Ledgers (as above) 1884-1888

**Box 15 - Store Ledgers**

Volume Store Ledgers (as above) 1890-1899

**Box 16 - Fausold, Martin L. II, Son of Samuel, 1921-**

**Fausold, Martin L. II**

Folders:

1. Comment on Research and Teaching (as Chairman of State University of New York Awards Committee, Research Foundation); MLF (II) discusses symbiotic relationship between research and teaching, 1970s (This is the first paragraph of MLF (II) comment. It attracted attention outside of the State of New York.)

A Comment on Research and Teaching

*Can academicians teach without practicing their profession or their craft? Since history is what historians say happened, do professors of history repeat only what others say it is, or do they also teach what they, as historians have found history to be? Do artists tell students to use their imagination in creating their art, or do they attempt to instill an awareness of imagination not unlike what they themselves are experiencing in the studio “today”? Can a musicologist teach the significance of old scores without analyzing the old scores first-hand? Can a teacher of fiction teach writing without the whole sense of working from inside a writing problem? Can a chemist teach modern experimental techniques of organic chemistry without a research, “hands-on,” mastery of these techniques? Just as important as practicing our craft: do we as academicians attempt to make our contribution to our discipline? Do we as historians add to the store of knowledge in our discipline? –Martin L. Fausold II*

2. First Honors Convocation Address, SUNY Cortland (title: “The Three Challenges”) 1956--challenges of relationship of education, citizenship, leadership.

3-10. Articles, Programs, 1950s-1990s

11. Book reviews by and about MLF II (This book, *The Presidency Of Herbert Clare Hoover* is the best review done on any book by MLF II.)

Martin L. Fausold (II). The Presidency of Herbert C. Hoover. (American Presidency Series). Lawrence: University Press of Kansas, 1985. In American Historical Review:

*The University Press of Kansas has performed a valuable service in commissioning the volumes in its American Presidency Series. Far from simply a series of works chronicling the events of each presidency, the Kansas series seeks also, according to its editors, to look at how the office of president “developed and operated during the president’s tenure,” the relationships between the president and “his staff, the executive officers, Congress, foreign representatives, the judiciary, state officials, the public, political parties, the press, and influential private citizens” and to examine the views of the presidency held by its occupants.*

*This is a tall order, indeed, for the historian viewing any presidency, and certainly the presidency of Herbert Hoover presents more problems than most, for Hoover was a complicated man and his presidency dealt with complex problems.*

*To the credit of the editors of the series, they chose probably the only historian able to deal with the Hoover presidency so succinctly (only 246 pages) and yet with such depth and understanding. Martin L. Fausold brings to his work the background of having directed two scholarly conferences on the Hoover presidency, one of which resulted in the publication of The Hoover Presidency: A Reappraisal (1974).*

*The Presidency of Herbert C. Hoover is based on wide research in manuscript and other primary sources and shows the author’s familiarity with all of the relevant secondary literature. His description of the influences on Hoover’s public philosophy is thoughtful and persuasive, particularly in his examination of the Quaker influence, as is his analysis of that philosophy in a chapter titled “The Corporatist Balance.” The extravagant expectations that accompanied Hoover’s election to the presidency are described by Fausold, as well as the apparent fulfillment of those expectations during the first months in the White House. The early promise was aborted, however, by the economic slide that began with the stock market crash, and Fausold has written an excellent analysis of the milieu in which Hoover operated in attempting to deal with the unfolding depression—the president’s difficulties with the press, with Democrats, with insurgent Republicans, with the Federal Reserve Board, and with businessmen and bankers. Yet, Fausold points out, Hoover was largely successful in getting his antidepression measures put into effect, if only because even his severest critics had little to offer as alternatives.*

*Despite the unprecedented intervention in the economy that took place during his presidency, Hoover’s program did not end the depression, although a slight upturn began in the summer of 1932, nor did it win the support of the public. Hoover’s talents as a publicist failed him, and his*

*weaknesses as a politician bedeviled him. To Hoover's credit, however, his successor, Franklin Delanor Roosevelt, was no more able, in seven years of peacetime, to end the depression than was Hoover during the three years that he grappled with it.*

*This is the most important work on the subject yet published, and it is likely to rank as the standard source on the Hoover presidency for years to come.*

12. MLF (II) Kids, Educational Stuff
13. Professional Correspondence, 1950-2000--including SUNY Cortland, SOFI's (student evaluations); MLF II as viewed by SUNY Geneseo President R. MacVittie; 1963 Cortland Presidential run (some support by SUNY Cortland faculty); appreciative letter from SUNY Chancellor Samuel B. Gould regarding MLF II in SUNY; Margaret Fausold Mazon Samuel Fausold doctoral dissertation correspondence; Faculty Exchange Scholar; MLF II, Pres. Faculty Association, SUNY, (FASUNY) (see MLF II File, Pres. Faculty Association, SUNY, in archives, University at Buffalo for coverage of MLF II Presidency, Faculty Association, SUNY, 1960s).

Letter regarding MLF (II) Presidency, SUNY Cortland, 1978; Letter from Van Burd, Distinguished Professor of Lit. (Dr. Van Burd was the only SUNY Distinguished faculty member in SUNY Cortland. This paragraph is the beginning of a lengthy letter. MLF II did not achieve the presidency of SUNY Cortland.):

*October 19, 1978*

*Mrs. Jerrene M. Woods  
Chairperson, College Council  
State University College  
Cortland, N.Y. 13045*

*Dear Mrs. Woods:*

*I recommend Dr. Martin L. Fausold to be President of State University of New York at Cortland because I think he has exactly the right balance of experience. He has made his mark as a superior teacher, an historian of considerable distinction, a skillful administrator, and a fine*

*citizen of the communities in which he has lived. His rise at Cortland from assistant to full professor in a period of six years was meteoric, reflective of the breadth of his contributions. The college being relatively small in those days, we all had impressions of each other as teachers, and I remember well the enthusiasm of students for Dr. Fausold's classes. From time to time, as I recall, we were both members of the Faculty Executive Council (as the Faculty Senate was then known), and I worked with him in the development of a new Constitution for the faculty. I was not surprised when he was elected to the Chairmanship of the Faculty at Cortland a year or two before he left. We were all struck with the quality of his mind, his perception of faculty problems, his willingness to throw himself into the fray of faculty governance, his ability to express himself on the public platform, his tact and capacity for sympathy.*

*- Van Burd*

14. IUP Personnel and Correspondence, 1980-2000 (This is a beginning portion of a long letter written by J. Ray Houser, son of Alice Fausold Houser and grandson of Samuel Fausold. Jay Houser was brilliant and here reacts to an article written by MLF II which was published in the *Rochester D & C*. MLF II stated that Reagan as President could never match former President Herbert Hoover in intelligence. Therefore, Reagan could never play Hoover's role.)

*Letter to Martin L Fausold II from nephew  
J.R. Houser Jr. Son of Alice Fausold*

*January 11, 1988*

*Dear Uncle Martin,*

*Thanks for your letter and its enclosed article on Reagan and Hoover. I thought it might be worthwhile to respond to your article (and perhaps send a copy of article and this response to my Uncle Jimmy). I don't expect to change your mind about anything, and the following is not really an attempt at reasoned discourse; it's more a look at some general principles and reactions that tend to shape my thought.*

*I essentially agree with your thesis. Reagan is manifestly no Hoover, and is close to utterly lacking in intellectual ability. Also, Reagan's*

*romanticized version of a semi-mythic American past hardly compares to Hoover's coherent (if also idealized) vision of the corporatist state, with its ordered liberty (I'm thinking of your Hoover book). But . . .*

*Reagan-bashing usually takes one of two forms: the man is the duplicitous embodiment of capitalist evil, or he is a senile actor whose presidency is a triumph of style over substance. The two views are contradictory; the same person cannot at once be a cunningly nefarious plotter and an absent-minded simpleton. I think that your "style over substance" stance typifies an attitude that has cost the Democrats the White House for the last two elections and may destroy their chances in 1988. You (and Democrats in general) may dismiss as a "fantasy world" Reagan's notions of reduced taxes, government deregulation, law and order, and "Star Wars" against the "Evil Empire."*

*However, I contend that these are very real issues with great popular appeal, and that the Democrats' inability to acknowledge (much less articulate) them led to the breakup in 1980 of the New Deal coalition, with that year's massive defection of union households, Catholics, and Southerners. I agree with your oft-stated belief that American presidents are generally forced to the political center—Reagan's presidency has not embodied the untrammelled radicalism one would have expected from his fire-breathing. But the significance of his double election lies not in a national lurching to the right, but in the Democrats' steep leftward decline from the center. As long as Democrats sneer at concerns about taxation, big government, and Soviet expansionism (that is, at the "fantasy world"), they will alienate millions of voters who would have once regarded the GOP solely as the party of bankers and big business.*

*- J. Ray Houser*

15. ISTC Student Correspondence to MLF II regarding Samuel Fausold/ISTC Pres., 1936-1939
14. Personal Correspondence, 1937-1958 (This very thoughtful letter was written by wife of MLF II, Daryl Clement Fausold, at the time of the death of Samuel Fausold.)



*319 Hemlock St.  
Pittsburgh, Pa.  
August 31, 1948*



*My dear Mrs. Fausold,  
My thoughts have been constantly with you and your family.*

*I wanted to talk with you over the weekend, but had no opportunity to do so. I am so sorry that I didn't have a chance to become better acquainted with Dr. Fausold. He made a very deep impression upon me the first time that I met him and my respect and admiration for him increased with each successive meeting.*

*I wish that there was something that I could do to lessen your deep grief. May time heal this first unbearable suffering and leave only the tenderness of his memory to sweeten your life.*

*My deepest sympathy is yours.*

*Sincerely,  
Daryl*

15. Personal Correspondence, 1974-1994 (This is part of a letter to MLF II written by his niece and godchild, Margaret Fausold Mazon, who was worried much about her doctoral dissertation on grandfather Samuel Fausold. MLF II advised her on the writing of the dissertation. M. Mazon did well on the dissertation and received her doctorate from West Virginia University.)

*October 23, 1989*

*Dear Uncle Martin,*

*I am almost trembling as I write this to you. It must seem very silly to you, but I am beside myself with nervousness over this dissertation. I have finally forced myself to sit down and start to put some thoughts down on paper in some sort of form that should soon be submitted to my advisor. I'll never be able to research properly and put the package together intelligently and coherently and everyone will know that I am just not smart enough to finish the degree. So, having said that, I throw this poor offering to you, and ask for your comments.*

– “Margie” Fausold Mazon

18. Personal Correspondence, 1995-1996
19. Personal Correspondence, 1997 (This is a paragraph from a lengthy letter written to Austin Samuel Fausold Mowers on the day after he was born at 12:43 p.m., February 1, 1997.)

*Back to you, Austin. You did arrive at 12:43 p.m. We were all proud of you. Your father saw you arrive; and we saw you shortly thereafter. How your Grandmother Fausold would have enjoyed you. She loved babies, family babies especially. (She passed away about two years ago.) Tomorrow, I will, quite unnecessarily remind your mother of how much Grandmother Fausold would have enjoyed you this day. It will be quite unnecessary for me to say that because she will be thinking the very same thing. When I say this to her we will both weep a bit.*

-Martin L. Fausold II

20. Personal Correspondence, 1998
21. Personal Correspondence, 1999 (MLF II son-in-law, John Schwanz, Captain, USN, suffered from his leukemia, perhaps contracted for close to twenty-five years on a submarine. One of his crewmen thought well enough of him to write this poem about him.)

*Well Wishes*

*From the distance, we stand and admire  
Great men and women of the day.*

*Sometimes we are blessed to be directly affected  
By their leadership and pleasant presents  
Which is not always the case,  
But working for you is not good, it's great!*

*Our paths cross briefly, on this road of life  
We sometimes never stop to think about the people around us  
As people, but you have not been that way.  
The guys would always comment,  
He spoke to me today!*

*This simple act would put the entire crew at ease.  
Thank you for being the person and man that you are.*

*We really appreciate you and all that you have  
Done, we always look forward to your arrival,  
And never stood in dread  
As so many who've gone before  
Who'd rain down fear upon our head.*

*We lift up you and your family in prayer  
Each and everyday. May God bless you  
And keep you in Jesus name we pray.*

*By William O. Johnson*

22. Correspondence, Florence Welty--letter to MLF II regarding Mary Welty. Florence was daughter of Mary Welty. (This is the tail end of a letter written, on November 13, 1966, to MLF II by Florence Welty, daughter of Mary Fausold Welty. She describes her mother, and the whole family, in a warm and artistic way.)

*Nov. 13, 1966*

*The Sycamore Shack,  
Weltytown,*

*Mt. Pleasant, RD #1, Pa. 15666*

*I have a very vivid memory of playing “hide & seek” with Charlie, in the house, of all places, and Charlie once managed to pull himself up and balance himself on top of a door! I don’t recall John or Sam being there, but I well remember Aunt Addie, “Little Addie” and Grace. Uncle Luther had a squire’s office in the corner of the yard, and I was very curious about what was in there. Then Aunt Addie told me to go out and “. . . tell your Uncle Luther to come in to dinner.” I wasn’t brave or bold enough to go inside—I just went to the door—but I got a quick look and I don’t remember what I saw.*

*Much later, when Grace & Timmy Horner lived there I visited there often. It was always pleasant as Grace had a knack of making a room attractive and interesting with pictures and this and that, and she was an excellent cook. The last meal I ate there was Christmas dinner—I think it was the last Christmas before she died. She didn’t want to eat alone so she crossed the road to Ivan Cramer’s place and wanted them to come over and eat with her. Well, they had their dinner on cooking, and Ivan suggested calling me to come out. He called and said if I would come and eat with her he would run out and get me. Since then I have had a feeling that she thought it might be her last Christmas dinner and she didn’t want me to be alone.*

*Uncle Luther always seemed to me to be very much like his father, Hon. John Fausold. I never saw Grandpa Fausold—he died ten years before I was born—but I heard a lot about him. For instance, if anyone was sick, Uncle Luther was sure to come riding down the road on his horse to see if he could help. I well remember one time when my mother was sick, he came to see her and he wasn’t feeling so well himself. When he left, he stood leaning on the rail of the bridge for a time before he could mount his horse. During his last illness, Frank and my Mother and I went out. There were quite a few people around, including Sam and Charlie. When he died, there were quite a few people to go from our house, and only one Tin Lizzy. But there was a man in Pleasant Unity with a big seven passenger car which he used as a taxi when needed. My father hired him for \$5.00 to drive seven of us to the church!*

*I hope you will find some things of interest in the accompanying articles, and I wish you and your lovely wife and children the best of everything.*

*-Florence Welty*

(In 1974 Florence wrote a second letter to MLF II. A portion of this letter follows):



*Florence Welty*

*March 12, 1974*

*Dear Martin Luther,*

*I received your letter of Feb. 24 and I have been waiting for an opportunity to write to you without interruptions – but it seems I picked a wrong day. I have two boarders here – two cats – Winifred is thirteen years old – I found her as a little kitten up at my mailbox – and “Pinky” has been here for about four years – I call him “Pinky” because he is all white except he has “Pink ears, pink nose, green eyes, pink toes. . . .” Winifred managed to sneak out – it is cold and windy here today, and I am trying to keep “Pinky” in because it is windy and cold.*

*Well, so much for the cats. I was very glad to get your letter and to know that at least some of the family are interested in their forebears – and it is interesting that your given name is “Martin Luther” Fausold. Of course I know that your father was – you are Sam’s son? I hope I’m right – for Martin Luther Fausold was my Mother’s brother – I remember him quite well. His two sisters were called Mary & Martha – Mary was my mother and Martha her sister – please pardon my cat – he got up on my table and bumped by arm! . . .*

*There were stories they used to tell when I was a kid about Uncle Luther going to see the sick. No matter how bad the weather, Uncle Luther would follow through it to sit by the patient’s bed side. When my mother*

*was very sick when I was a little tot they used to say that Uncle Luther would come every day to sit at her bedside and help to cheer her up.*

*There was four children out of seven of my Grandpa Fausold who lived to see life: Harry, Luther, Mary and Martha (We called her Aunt Mattie). But I never saw her – she died quite young. My mother was 93 plus when she died in January, 1948. She was clear in her mind until she went unconscious. I came home from the WAC after two years in the service – in January, 1946. I saw at once that my mother was not in good health – so I immediately decided to drop everything else and care for her. She died as I mentioned two years later – January, 1948.*

*It was a pleasure hearing from you, Marty, and I hope you get out this way sometime. I live along here – except for my two cats, and I do enjoy the pleasure of being so free, and I also like company----so if you ever get out this way drop in – well, don't drop – that's too risky – just stroll in. I'll probably be here for I don't go away very much . . . . I just have one sister left – Madeline (Mrs. Charlie Struble), three brothers, Maurice, Frank and Cecil, and, of course, dozens of neices and nephews – who are great!*

*God bless you!*

*-Florence Welty*

*A Prayer for Beauty, by Florence Welty*

*God make me beautiful like my mother,--*

*I want to be*

*As thoughtful of others as she is of me.*

*Make my hands willing and kind and strong,*

*Teach me to sing her happy song.*

*God make me as beautiful as my mother,--*

*Help me to do*

*My every small duty as gracefully, too.*

*Fill me with tenderness, teach me to be*

*As constant and tender and faithful as she.*

*God make me as loved and loving, too—*

*Help me to see*

*That loving others is loving Thee.*

*Teach me to lose myself, God, in another,*

*Make me as beautiful as my mother.*

23. MLF (II) WWII letters home--letters from around world; European, American, Chinese theaters. (Letter home from MLF (II) written from Shanghai. Martin requested shore duty. He worked in Fleet Post Office and had a room in the Palace Hotel across from the Cathay Hotel where General Marshall stayed trying to bring the National and Communist forces in China together.)



*Lt (Jg) M. L. Fausold*

*7 October 1945*

*Dear Mother and Father,*

*At last we are tied up to a pier and it is really a wonderful feeling. But it takes the port city with more deck space than any other city in the world to give us the pleasure. And it's wonderful, especially for those men on board that haven't seen civilization in seventeen months.*

*Shanghai is everything that TIME magazine said it was in its early days of celebration. The city is not yet ruined by the array as most cities are. And although I've said that I've seen some fascinating things this is the cities (sic) of all cities. Four of us started out about two o'clock, crossed the Whangp River, hit the Fleet Landing and just started walking, taking it all in. Now it's hard to express just what we saw but after hearing about rickshaws and their*



*cookies, the kamonas, the long stem pipes, the incense and yet it is a very modern city. Its hotels are beautiful and the restaurants modern and so called night clubs like any in the states. This was the conclusion we came to after a day of seeing the city.*

*Martin Fausold*

24. MLF (II) WWII letters to and from home--European, American, Pacific, Chinese theaters.
25. MLF (II) WWII Invasion MSS--maps, detailed descriptions by US Navy historian--MLF II participation. Invasion of Southern France, August 15, 1944. (Here is a snippet of MLF (II) description of his naval duties and trip across the Atlantic in 1944.)

*I was assigned communication and commissary responsibilities; and additionally served as duty officer, doing 4 hours on and 8 hours off.*

*We Shook down in the Chesapeake, during which time we beached on the campus of a girls' school to what the girls dance around the May Pole, May 1, 1944.*

*Then, in convoy we crossed the Atlantic. On June 6, we headed for the Straights of Gibraltar just as our sister LCI (L)s went onto the Normandy beaches—the luck of the draw. God must have been on my side. In the Mediterranean, stopping off at Oran, Algiers and Tunisia—for certain ship overhauls, instructions and liberty (liberty is time ashore for fun). Then to Palermo, Sicily and on to Pozzuoli, a port of a few thousand population outside of Naples and across from the Isle of Capri (how many of you can remember “’Twas on the Isle of Capri that I met her.”) Did you know that Sophia Loren was raised in Pozzuoli? Surely our eyes met.*

*Out of Pozzuoli we trained troops of the 3<sup>rd</sup> Division of Gen'l Mark Clark's 5<sup>th</sup> Army in preparation for the invasion of Southern France.*

*-Martin Fausold*

26. MLF (II) Diaries, 1998-2002--Extensive, topical notations on sides--regarding wife Marge Alzheimers, relations to Dimpfl family/national current events, etc. (Hundreds of pages per year.)

- 27-28. MLF (II) Research Materials, PA Public Higher Ed, 1930s-1940s (compiled for IUP 125<sup>th</sup> Anniversary, 2000).
29. IUP 125<sup>th</sup> Anniversary Correspondence 2000. MLF II statement that the 1930s was period of “rampant” politics in PA, public higher education. Former IUP president suggested to MLF II that it was “only politics.” MLF II sees politics continuing. MLF (II) said in part (MLF II had wanted a real disclosure of the political infighting in the 1930s. Fausold lost his job as president of Indiana State Teachers College. Here is some commentary by MLF (II) at Indiana on that occasion):
- “Despite an auspicious start, Fausold became embroiled in controversy when he attempted to initiate some needed changes, beginning with the removal of the much beloved head of the college’s practicum, the centerpiece of the college at the time. She was without a college degree and, by Trustees’ records of 1926, was to have retired from the college before my father arrived. I am struck by the warmth with which my father praised her and offered her a position in charge of teacher placement at the same salary. But, a year long political storm erupted culminating in someone pouring emery dust in the crankcase of the family Studebaker. Rather than cast any blame President Fausold quietly replaced it with a much smaller Studebaker, into which is family scrunched.”* See address for full detail. (Fausold was removed in ’39.)
- Martin L Fausold II
30. Fausold Dairy Artifacts

### **Box 17**

1. 2002 Letter, MLF II to Pres. Pettit, IUP, regarding SUNY elimination of Training Schools, 1970s. Education in the town of Geneseo by Wayne Mahood, 1989.
- 1A. NYT letter to MLF (II) thanking him for \$500 for Sept. 11, 2001 fund.

2. From IUP June 20, 2002 correspondence to MLF II regarding “substandard teachers” including Jeanne Ackerman, who was to have retired, 1936, six months before S. Fausold became pres.
3. Letter, Dr. Margaret Fausold Mazon to M. F. Fausold II wife, Marge Dimpfl Fausold, illustrating members of Fausold family she will get to know. Some zeroxed notes in care takers re. Marge Fausold Alzheimers, 2003.
4. Daryl Clement Fausold. Memorial service program, obituary, monument arrangements.
5. Correspondence (1999) to MLF II re. his twelve NEH seminarians in 1979.
6. Resolution to MLF II on his retirement, 1992.
7. Marjorie Vickroy Clement. Reflections by and an article about Clement family.
8. MLF II Political campaign, 1954, for Cortland County Supervisor (Democrat)
9. MLF II Academe. Newsletters, clippings, etc.
10. Newsclippings re: MLF (II).
11. Newsclippings re: MLF (II).

### **Box 18 - MLF II**

#### **Martin L. Fausold II**

**WWII MLF II Scrapbooks (with USN supplied Kodak Medalist Camera, a hundred images from many war theaters). Also Scrapbook (on loan to Cynthia Lynn Fausold)**

**MLF II, Pres. Blairsville, PA, Kiwanis Club, 1949; (in 1949, Pa. Governor James Duff and Mrs. Duff participated.) honeymoon; MLF II and Daryl Clement and Fausold Dairy Co. Also Regulations, 1943, V-12 Unit, Seaman Martin L. Fausold (Muhlenburg College)**

**Three folders: “A Potpourri of Corres.” MLF (II), '99, '00, '01, '02, '03**

BOX 18A

Folder 1 Regulations For the Operation of the NAVGY V-12 Unit

Folder 2 A Touch Of Religion Martin L. Fausold 2000-2003

Folder 3 The Life and Career of Martin L. Fausold 2004 Rough Copy

Letters Home Gene H. Utterback

Register Rough Copy 2004

A Touch of Religion, MLF (II) 2002-2003 correspondence deals with issue of literal and non-literal briefs of Scripture. MLF (II) was asked to leave Central Presbyterian Church in Geneseo. He did not.

MLF (II) letter to Session, Central Presbyterian Church, regarding non-literal view of Biblical Scripture (“A Touch of Religion”—in the late 1990s and early 2003 MLF II waged a campaign to do what is stated. The letter is quoted at length because of the volume of correspondence to and from MLF II dealing with this subject matter. MLF II efforts in the late Spring 2003 were interfered with because of some self diagnosed emotional problems (wife’s Alzheimers, caretakers overtake home, attitude of all the Dimpfls, MLF II inability to see women, attitude of some at church, etc.):

*Nov. 25, 2002*

*Session, Central Presbyterian Church  
Geneseo, N. Y.*

*Dear Session Members:*

*I’ve been proud to have my family at Central for over nearly a half century – and very much Presbyterian connected: Presbyterian college, Elderships, finance drives, pulpit work.*

*In recent years, I've traveled a religious journey which, while enhancing my Christianity, has "baffled" some of my fellow parishioners. Much of my time entailed some portions of summers at the Chautaugua Institute. There Marge and I read or listened to theologians, Paul Tillich, John Shellby Spong, John Dominic Crosson, and Karen Armstrong. I fear I have foisted some of the same on fellow parishioners. Of course, I thought I was serving parishioners and God*

*Francois, your education (?) committee and, I believe, possibly, the Session last Spring, approved the effort to engage a dialogue, "Can one be a Christian without believing in the Resurrection?" The object was to look at Resurrection per se and Christ impacting singularly on western civilization for two thousand years. We intended to examine such interpretations of scripture as literal, non-literal, rhetorical, and as metaphor. We wanted a dialogue. (A wonderful Roman Catholic son-in-law of mine, overhearing daughter Cindy and me discuss this, interjected, "We have no trouble with dialogue. We have none.")*

*Since my Christianity has been so much enhanced by "my" Chautaugua views of scripture, I thought that dialogue (in a Reform church) would be productive. I had hoped that those with varying points of view might come closer to God, as I have. I was not assuming any "conversion." As Pastor Stimson has pointed out, scripture is viewed not just literally or non-literally but frequently as metaphor.*

*Of course, the most basic of literal and non-literal view of scripture is the definition of God. A well thinking nephew and godson of mine, Martin Luther Houser, a son of a Lutheran minister, is attracted to the Tillich/Spong-like "non-theistic definition of God . . . God is love." Martin cautions, however, "I have an ultimate distrust of the rational – mankind so often gets it wrong. So, I'm left with [our fathers] faith. But, I am uncertain." Martin and I are on the same journey. I seemingly am more certain.*

*It should be noted to readers that the Presbyterian Book of Order of the Presbyterian Church gives sanctions to all its parishioners to pursue this journey.*

*I write this memorandum as a token of appreciation to those who have lent an ear.*

*Sincerely,*

*Martin L. Fausold*

## **Box 19 - MLF II**

Books by MLF II:

Gifford Pinchot Bull Moose Progressive, 1961

James W. Wadsworth, the Gentleman from New York, 1975

The Hoover Presidency: A Reappraisal, 1974

The Constitution and the American Presidency, 1991

The Presidency of Herbert Clark Hoover, 1984 (MLF II, 1984. This is MLF II conclusion to his book. The book was a runner-up for Best Book on the American Presidency, 1985. It is the best book MLF II ever wrote.)

*It has often been said that the jury on the Hoover presidency is still out—that scholars who seek to assess American presidents react differently depending upon their sources of information, their times, and their values. In fact, however, the jury on the Hoover presidency is in, with a verdict that is compelling enough to make it unlikely that it will ever be overturned. The jury consists of three important constituencies: (1) Hoover's close associates of high stature at the close of his presidency; (2) the majority of Americans throughout the half-century following his presidency; (3) and historians at the half-century mark after his presidency. The constituencies agree that the Hoover presidency was a failed one. They do so notwithstanding three arguments in defense of the administration: that its goals and antidepression efforts were in many respects without precedent; that it was surely as much failed by American capital as by presidential leadership; and that probably no American elected in 1928 could have survived the nation's greatest depression. Ironically, Herbert Hoover's very success in pursuing his goals and antidepression efforts were probably paramount in creating the misfortunes of his presidency. His unalterable commitment to ordered freedom as a canopy for solutions to the depression proved to more telling to this jury than did either the iniquities of capital or the seeming facileness of his political opponents. Of course, Hoover's*

*friends of eminence saw the many magnificent qualities of the whole life of Hoover, if not of his singular presidency; and increasing numbers of historians, including this author, see them now. It is regrettable that as the twentieth century nears its end, many of the nation's citizens continue to see in the man Herbert Hoover what he himself frequently saw in his own presidency—"the dark side first." Given the emphasis that is placed on the presidency in American public affairs, it is improbable that this assessment will ever change.*

*-Martin L. Fausold II*

### **Box 20 - MLF II and Samuel Fausold, Jr.**

#### **Folders:**

1. 1939 MLF II Indiana High School Yearbook
2. MLF (II) Scrapbook
3. WOW! Warm, illustrated tribute to MLF II by niece and Godchild, Margaret Fausold Mazon (c2000)
4. Samuel Fausold, Jr. graduating yearbook. Dedicated to Samuel Fausold, Sr.
5. Newsclippings regarding Samuel Fausold, Jr. retirement from Midland School Board, of which he was a member.

### **Box 21 - Largely pre-1936 (Folders, etc.)**

#### **Fausold, Samuel (Sr.)**



These boxes and folders are the heart of the Fausold Family Collection. Samuel Fausold served in several western Pennsylvania school superintendencies (Irwin, Monessen, Ambridge) and Deputy Superintendent, State of Pennsylvania, President, Indiana State Teachers College. (He had been candidate for Presidency, Slippery Rock State Teachers College and Supt., Pa. Dept. of Public Instruction.)

Folders:

1. Address Book of attendees at his inauguration, presidency, Indiana State Teachers College, 1937
2. Wedding Chimes, book gift from pastor; and fine little humorous broodside about Breegle-Fausold wedding
3. 1936 Addresses and articles
4. Addresses and articles, n.d. (This is the early part of a Samuel Fausold speech on Educational Leadership.)

*“Every directive post over people is one of leadership.” Certainly teachers are leaders. They direct pupils. Again, they are followers. They are among the led. They have above them principals, supervisors, superintendents, school boards, and I almost said in facetious ven, janitors. Due to this crucial fact that a teacher is a leader and among the led, it has occurred to me that one might well consider some of the problems and responsibilities of leadership which teachers face and even offer a few suggestions and comments concerning them.*



*Need for Leadership: We are living in the midst of an evolving, changing society. In fact we are sure of one thing today and that is that life is changing. As life changes public education must change. Certainly it is trite to say that the public school is an evolving institution in an evolving society and as such demands leaders. You as teachers then must not only lead children but you must lead parents also to an understanding of this evolving society and the changes derived in school organization, curriculum, and method. In fact you must draw attention to changes demanded in teaching themselves.*

*-Samuel Fausold*

5. Addresses and articles, 1938
6. Samuel Fausold Inaugural Address, Presidency, ISTC, 1937
7. Addresses and articles, 1923-1937. (Samuel Fausold on country school, his country school experience, etc.
8. Addresses and articles, n.d.; Women in business, humor, community and college; the college student; first progressive schools in other lands; why pupils leave grammar grades, etc.
9. Articles, Case Study of School; centralized org. of Ambridge Plan; value of history

**Box 22 - Samuel Fausold – largely 1920s**



*Supervising Principle dictating mail from Irwin, Pa.*

## C. 1922

### Folders:

1. Ambridge Plan Material, 1923. Ambridge Plan, 1920's-1930's was "Progressive" teacher/student contract to have students learn at their own pace. Was in tradition of philosopher, John Dewey. Other such nationally known plans were Winnetka and Dalton. Fausold's conclusion on The Ambridge Contract Plan:

*The contract plan never fails to enlist the greatest interest when presented and discussed with community or professional groups. This may possibly be attributed to the fact that both those inside and outside the profession are conscious of the weaknesses of the mass recitation system and are hopefully looking for something to take its place.*

*To go back to mass instruction in our community, after two years' experience with contracts, would be unthinkable. The administrative, supervisory, and teaching advantages of the plan have so demonstrated themselves that even the occasional doubting Thomas has been convinced.*

*-Samuel Fausold*

2. Ambridge Plan Material, 1923. Used in education classes, Gettysburg College attended by MLF (II); H. Grose used in Erie, PA, etc.
3. Application, 1922 re: Ambridge position
4. Contract Teaching Method (letters from across nation, many from Wisconsin), 1927. Plan attractive in Wisconsin, Colorado, Idaho.
5. Ambridge Contract Teaching Method, 1927 - used in Wisconsin, Colorado, Idaho
6. Directories, 1924-1930
7. Miscellaneous, n.d.

8. News Clippings, 1927-1930--Monessen, PA
9. News Clippings, 1926-1935--Monessen and Harrisburg, PA
10. Publications, 1925-1926
11. Rotary Club, n.d.
12. Superintendent's File, 1923-1931
13. Superintendent's Notes, n.d.
14. Superintendent's Report, 1930
15. Samuel Fausold Biographical Material (much autobiographical reminiscing of Samuel Fausold), 1942
16. Samuel Fausold Biographical Material (classic pictorial image of S. Fausold), n.d. (As Deputy Supt. Of Public Instruction, Pennsylvania, 1935, Samuel Fausold was able to bring a public school in Norvelt, Pa., a low cost but substantial housing area. On the land where Samuel Fausold was born.)

Samuel Fausold reminiscences, purely from memory:

*I was born Jan. 21, 1888 in a brick farmhouse on a large farm in what is now Norvelt, Westmoreland Co., Pennsylvania. The farm was a large one, probably 150 to 200 acres. The soil is limestone and produced excellent crops. The land is fairly level as anyone can see who visits Norvelt. The Mt. Pleasant H.S. (usually known as Hursts High School) is only about 1,000 feet from the place of my birth. My sisters, older than myself, attended a one room school when they were youngsters on the site of the present High School. This one room school was known as Hursts, so named from people of that name who owned an excellent farm there, since taken over by Norvelt. Norvelt is sometimes referred to as Westmoreland Homesteads. This was one of the early experiments of the New Deal in which Mrs. Franklin D. Roosevelt took considerable interest. She personally visited the Homesteads several years ago. The man of good character, out of work, and who had a wife and children was permitted to*

*buy a home and pay for it like rent. As I understand it he also had an interest in the farm which produced milk and poultry products.*

*Since I am discussing Norvelt I might say that I had an interesting and probably helpful part to play in getting Uncle Sam to build an elementary school for the Norvelt project. It seems that the houses at Norvelt are sold to individuals but the title is held by the gov. till the last payment is made. It also seems that the local district cannot tax the U.S. government. Since this is so where is the money to come from to education the children of that area? This threw (sic) quite a burden on Mt. Pleasant Twp. And posed quite a problem. Supt. Lloyd Rumbaugh took the matter up with me, while I was Deputy Supt. Of Public Instruction and asked my help. Mr. Rumbaugh was Supt. Of Mt. Pleasant Twp. Schools. He told me that I was born on the land that was not the Homestead and that I should help. He saw me in Harrisburg; probably early in 1936 along with several members of his School Board. I took the problem up with the Federal Gov. Told them that Uncle Sam was helping thru P.W.A. (Public Works Administration) to build school houses all over America and that it was up to them to do something for their own child. On one occasion I saw some of the Federal Authorities in Washington, D.C. about it. I talked to a young Mr. Blair whose father had been State Supt. Of Schools of Illinois. This young man had already taken on the marks of the bureaucrat. He said that they knew about the problem and that he thought the Justice Dept. would hand down a decision making it possible somehow or other for these properties to be taxed by the local school district even if owned by Uncle Sam. He said smugly, "You know the mills of the gods grind slowly and they grind exceedingly fine." This smugness is typical of the bureaucrat. The bureaucrat was responsible for the fall of France and we should beware. I have a notion that half of the 5,000,000 civilian employees of the Federal, State, and Local governments of this country could be fired and our public business would be attended to better than ever. Our public services are loaded down with a lot of incompetents, relatives of congressmen, etc., etc. Some of them are competent but it behooves them to bury any original ideas if they are to hold their jobs. So before long a newcomer learns it is best to go along with things as they are. Woodrow Wilson once said that the Republican party had not had a new idea in 40 years. Well, the typical bureaucrat never has a new idea. France was operated by a vast bureaucracy and fell.*

*-Samuel Fausold*

17. Samuel Fausold Biographical Material, n.d.

18. Samuel Fausold Biographical Material, n.d.
19. Samuel Fausold Biographical Material, n.d.
20. Samuel Fausold Biographical Material, 1965 – Very extensive MLF II, conversation with Charles Fausold; very extensive; also on audiotape (to hear C.D.F.--see Box 32.)

**Samuel Fausold Correspondence (alphabetically, by group date)**  
**Pre 1930**

21. A-Z (Includes poignant letter of mother Ada to son, Samuel)
22. G-M
23. N-Z

**1930-1935 – Samuel Fausold Correspondence**

24. A
25. A--includes correspondence to State Superintendent Public Instruction, Lester K. Ade, regarding S. Fausold duties as Deputy Superintendent of the Department (Superintendent Without Portfolio--only Deputy)
26. B
27. B
28. Bare, Bruce M. (former roommate, Gettysburg College and brother-in-law). Much correspondence here regarding efforts of Samuel Fausold to become Superintendent of Department of Public Instruction, Commonwealth of Pennsylvania, Bruce Bare working Philadelphia
29. Boyd, T. Sutton--uncle of Samuel Fausold wife, Edna; business transactions with Samuel Fausold

30. C
31. C
32. Cressman, P. L.—advisor on candidacies, administrative positions; Assistant Superintendent, Public Instruction, Michigan State. He was close to S. Fausold and this letter represents one of the strongest representative letters written on Fausold's behalf. (Michigan State's Assistant Superintendent of Public Instruction wrote this important letter to Pa. Governor George H. Earle recommending that S. Fausold be appointed Pa. Supt. Of Public Instruction.)

*December 12, 1934*

*Hon. George H. Earle, Governor  
Harrisburg, Pennsylvania*

*Dear Governor Earle:*

*I have just sent you the following telegram in behalf of the appointment of Superintendent Fausold to the position of State Superintendent of Public Instruction:*

*“As a former Pennsylvanian may I respectfully call your attention to Doctor Samuel Fausold, Superintendent of Schools of Monessen, as a Pennsylvania school man eminently fitted for the position of State Superintendent of Public Instruction. Stop Doctor Fausold is recognized as an outstanding educational Leader both in Pennsylvania and throughout the nation.”*

*It has been my privilege in the years gone by to work very closely with Superintendent Fausold. I am personally acquainted with his ability as administrator and educator.*

*Two years ago Doctor Fausold called the school men to Harrisburg in an effort to secure the needed appropriations required by existing laws. The*

*present deficiencies in school appropriations are the exact amounts that he predicted at that time that they would be.*

*I am quite certain that the school men of Pennsylvania look to Doctor Fausold for leadership in school finance, school administration and education in general. I am certain that his appointment as Superintendent of Public Instruction would be a most splendid addition to the competent staff you have thus far selected. I trust that you will continue to exercise your good judgment in the selection of cabinet officers by the appointment of Doctor Fausold.*

*Very sincerely yours,*

*P. L. Cressman  
Assistant Superintendent*

- 33. D
- 34. D
- 35. Davis, Donald P.
- 36. Dennis, L. H.--became financial officer, PA Dept of Public Instruction
- 37. E
- 38. E
- 39. F
- 39A. G
- 40. G
- 41. Grose, C. Harmon--important protégé who followed in S. Fausold footsteps; Asst. Supt., Ambridge system under S. Fausold, Supt. Erie Public Schools, Deputy Supt., PA Dept. of Public Instruction, Pres., California State Teachers College. (When in 1952 MLF II talked to Deputy Supt. of Public Instruction, Dr. Grose took pride in sitting in

Mentor S. Fausold chair. He also reported that the new Democratic Governor George Leader considered eliminating party turnovers in the Dept. by “firing” one half of the Republican appointees in the Harrisburg dept. so that a new Republican Governor would keep one half of Democratic appointees.) (State college presidencies were by and large stabilized by the 1950s.)



*Samuel Fausold, Herman C. Grosse*

- 42. H
- 43. Haberlan, John C.--old family and professional friend; Supt. of Schools, Mt. Pleasant, PA
- 44. H, I, J
- 45. I, J
- 46. K
- 47. K, L
- 48. L
- 49. M
- 50. M
- (1) McKinney, Rev. W. W., Presbyterian Minister in Ambridge - letter to Governor Earle--typical of letters supporting S.Fausold to the PA Superintendent of Public Instruction (The paragraph below is



revealing of how people in Ambridge, Pa. Viewed his as Supt. Of Ambridge public schools. See full letter for other phases of S. Fausold life in the Ambridge school system.)

A Presbyterian Minister's Recommendation to Gov. George H. Earle:

*April 1, 1935*

*Honorable George H. Earle  
Governor, Commonwealth of Pennsylvania  
Harrisburg, Pennsylvania*

*Honorable Sir:*

*We in Ambridge cherish many pleasing memories of the splendid service which Dr. Fausold rendered to our community, during the eight years he served as the Superintendent of the Ambridge Schools. During that period he completely reorganized the entire system along most progressive and efficient lines. He established a course of study which has given Ambridge wide recognition and which has enabled its graduates to achieve distinction in the various colleges to which they have gone. When Mr. Fausold began his work in our midst, Ambridge was facing the necessity of building enlarged equipment to take care of the rapid growth in the school population of the community. With fine venturesome courage and with great skill in handling men, Dr. Fausold succeeded in giving to Ambridge two of the finest buildings in Western Pennsylvania. With the type of population which naturally comes to a rapidly developing industrial center, Mr. Fausold had grave problems to face in selling his vision to the leaders of the community. That he succeeded splendidly is evidenced by the fine spirit of harmony which resulted from his efforts and by the high rank which the Ambridge Schools have achieved.*

*(Rev.) W.W. Mc Kinney*

### **Box 23 - Samuel Fausold**

Folders: 1-15 (pre 1936)

1. Miller, Carroll--S. Fausold interest in becoming President, Slippery Rock State Teachers College; She was sister of U.S. Senator, Joseph Guffey; had much influence over administration of Slippery Rock

S.T.C. Is reputed to have “politically terrorized Slippery Rock.” In 1934, Samuel Fausold was a candidate for the Slippery Rock Presidency.

2. N, O
3. O, P
4. P
5. Pershing, Clarence H. Pershing was a close friend of Samuel Fausold. When running for Westmoreland County Commissioner, a Democrat, Fausold wished him well but said that as a “school man” he never took a public political position. Pershing won his election as Commissioner.
6. R
7. R, S
8. S
9. Snyder, J. Buell
10. T
11. T, U, V
12. U, V
13. Valley Realty Co.
14. W
15. X, Y, Z
16. Unidentified

17. Responses to Survey of Superintendent Contracts (reactions to Ambridge Plan). Very important for assessing this type of “progressive teaching” (somewhat patterned after Dalton plans)

### **1936-1939 – Samuel Fausold Correspondence**

18. A (Lester K. Ade as State Superintendent)
19. A
20. Ackerman, Jennie, Correspondence regarding removal of Ackerman as the head of Training School, ISTC, 1938 (to be instead in charge of placement of teachers). “Cause Celebre” of S. Fausold tenure as President, ISTC. For political contention, see Box 15, Folder 41; Box 16, Folders 5, 21, 45, 48, 61; Box 17, Folders 2, 10; Box 19, Folder 11; Box 20, Folders 12, 15

Letter from Indiana Normal School principal regarding Miss Ackerman removal as Principal, Training School, 1936, prior to S. Fausold presidency. See strenuous opposition of D. R. Tomb in 1938, Box 24, Folder 10. (The critical point of this letter is that S. Fausold was removed from the presidency of ISTC because, in fact, he followed the rule of Indiana Normal Principal John Keith in 1926. The letter is offered nearly in full as evidence of Samuel Fausold’s professional and non-political behavior.)

*February 3, 1926*

*Mr. Henry Klonower,  
Director of Teacher Bureau,  
Department of Public Instruction  
Harrisburg, Pennsylvania*

*Dear Mr. Klonower:*

*At a meeting of the Trustees of the Indiana State Normal School held January 30, 1926, the application of the Qualification-Salary Schedule to the faculty membership was considered. Copies of the Qualification-Salary Schedule were given the Trustees and the qualifications of teachers were presented. After discussion, the following resolution was passed:*

*“Resolved, That the Principal is authorized to proceed along the lines of his report in the employment of teachers for the ensuing year, with the qualifications as to sub-standard teachers as named in the report.” (There are, at present, twenty sub-standard teachers. Twelve of these are dropped, three will qualify by September 1926, and consideration is asked for five.)*

*In accordance with the foregoing, the suggestion made by you recently, and paragraph (b), page 3, of Supt. Haas’ letter of January 23<sup>rd</sup>, I present the following cases which, in our judgment, merit consideration:*

*Jennie M. Ackerman – Director of the Training School – Request for continuance until age sixty-two is reached.*

*Miss Ackerman, after a three year course at the DeGarmo Institute (a secondary school at Beacon, N.Y.), finished a two year course at the New Paltz, N.Y., State Normal School in 1894. She has spent two summers at Teachers College, Columbia University. Her teaching experience covers thirty-two years – three years at Red Bank, N.J., five years as head of the Training School at East Stroudsburg, Pa., and twenty-four years at Indiana. Of these twenty-four years at Indiana, twenty-two have been as Director of the Training School.*

*Miss Ackerman has been a student of her problems, a practical, sensible executive, and a fine illustration of womanly poise. The Training School at Indiana has expanded greatly in recent years and Miss Ackerman has been able to manage its growing complexity with efficiency and has secured fine spirit of cooperation on the part of all who are concerned therein.*

*We feel that Miss Ackerman’s “efficient service to the State over a long period of years” merits the consideration which is herein asked.*

*Summarizing the foregoing:*

- 1. One year extensions are asked for Mrs. Brew (Librarian), Mr. Gordon (Mathematics), and Miss McElhaney (Art).*
- 2. Extensions to age sixty-two are asked for Miss Hope Stewart (Dean of Women) and Miss Jennie M. Ackerman (Director of the Training School). Both are in administrative rather than teaching positions and both are vital parts of that “continuing tradition” which every institution should seek to conserve.*

*Respectfully submitted,*

*John Keith*



*Jennie M. Ackerman*

21. Ade, Lester K. Corres. (Supt. of Public Instruction) - information regarding political nature of '38 Alumni meeting ISTC
22. B
23. B
24. Boyd, Thomas S.--uncle of Edna Breegle Fausold
25. C
26. C
27. C
28. D
29. D
30. Davis, Donald C. - became Director of the Bureau of Ad. & Finance with S. Fausold help (position apparently assured because of Democratic Party affiliation)
31. E

32. Equitable Life Assurance
33. F
34. Farms
35. G
36. Glass, Lucy W.
37. Grose, Herman L. (Sam Fausold protégé)
38. G
39. H
40. Haberlen, John L. (family and professional friend)
41. Horner, Grace, sister of S. Fausold
42. H, I, J
43. I, J
44. K
45. Klonower, Harry--head of certification in Dept. of Public Instruction. Received letter from Indiana Normal School Principal, John Keith, that Jennie Ackerman, a “substandard” teacher, should be retired at age 62 (1936, prior to Fausold becoming President of ISTC). Such action was approved by the Board of Trustees, January 30, 1926 (although such minutes missing in IUP files).
46. K, L
47. L
48. Lauver, Guy C. (very close family and professional associate, ISTC) S. Fausold explains to Lauver that Indiana’s Dr. Stuart had

misdiagnosed S. F. physical as pleurisy, not coronary thrombosis, etc.  
Political implications of the affair.

49. Mo-McL
50. McCann, John H., Member, Bd. of Trustees, Indiana State Teachers College during S. Fausold presidency.
51. McKee-Nadler Inc.
52. McN-Mur
53. M
54. Miller, Horace N.
55. Miller Bros. and Co.
56. Milner, Mark T.
57. Mooney, James E.
58. N-O
59. Pa-Pf
60. Peoples National Bank and Trust
61. Pershing, Clarence (close professional and political friend). On April 29, 1931, S. Fausold wrote to Pershing, a candidate for Westmoreland County Supervisor, "Of course as a school man I am very careful to make it a rule in my life to keep out of politics."
62. Philson, R. H.
63. Ph-Q
64. Public Schools Employees Retirement Board
65. R

66. Rafter, Joseph L.
67. Record of Illness of Dr. (Samuel) Fausold

**Box 24 – Samuel Fausold Correspondence, 1936-1939**

Folders:

1. Sa-Sh
2. Sheehe, T. H. Very important information. Sheehe was President, Board of Trustees, ISTC, 1930s during S. Fausold's Presidency, ISTC. Discussion of political contention between Democrats Tomb, Spicher, Fee; corres. regarding political pressure.
3. Si-Sp
4. Smith, W. Wallace and Co.
5. Smith, William R.
6. Sq-St
7. Standard Life Insurance Co.
8. Student Co-op Association Report
9. T, U, V
10. Tomb, D. R. VERY IMPORTANT (Democratic Party ISTC trustee, opposed to President Fausold, especially on shifting of Jeanne Ackerman as Head of the Training School--to be in charge of "teacher placement." Lengthy correspondence of political contention, ISTC. See Box 16, Folder 20

(Letter of D. R. Tomb opposing Pres. Fausold on the Ackerman Affair. By order of Indiana Normal principal, John Keith, 1926, Miss Ackerman was to leave the training school principalship at age 62 [actually in 1936 before



Fausold became President of ISTC.] This letter is offered in full to S. Fausold's correct actions.)

*April 30, 1938*

*Samuel Fausold, President  
State Teachers College  
Indiana, Pennsylvania*

*Dear Doctor Fausold:*

*The more I think and hear about the matter, the more I am convinced that the request to Miss Ackerman to give up her present position at the end of the present school year, was a mistake, which if not corrected, will result in irreparable damage to both the School and your administration.*

*Furthermore, I must say frankly, that I cannot understand by what authority you made this request. It has always been my understanding that the authority to employ and discharge the members of the administrative staff and the members of the instructional staff is vested exclusively in the Board of Trustees of the College, and I believe you will agree that such is the case.*

*. . . I am sure you do not realize the situation, but it is my frank opinion that you are rapidly getting your administration into a position where the alumni, the students, the members of the instructional staff and the people of Indiana are dissatisfied and antagonistic, and with this condition existing, I believe it will be very difficult for you to administer the affairs of the College successfully.*

*I am fully convinced that you should take immediate action to correct the mistake which has been made in Miss Ackerman's case, and if you do so, I am fully convinced that such action will react to the benefit of the College and your administration. If such action is not taken it will be necessary for me to make public my views of the matter as I am unwilling to accept any responsibility for this mistake.*

*With best wishes, I am*

*Very truly yours,*

*D. R. Tomb  
Fee & Tomb, Attorneys at Law  
Indiana, Pa.*

11. Valley Realty Co.

12. Who's-Who
13. Wh-Z
14. Unidentified
15. 1936
16. 1936
17. 1936
18. 1937

**Post 1939 – Samuel Fausold, Correspondence**

19. A
20. B
21. C
22. D
23. E
24. F
25. G
26. H
27. J-K
28. L
29. M
30. N-P

- 31. R
- 32. S
- 33. T
- 34. U-Z
- 35. Unidentified
- 36. Department of Public Instruction
- 37. East Huntingdon Township

**Educational Materials – Samuel Fausold**

- 38. Journals, 1938-1939
- 39. Journals, 1936-1937
- 40. Journals, 1931-1937
- 41. Journals, 1936-1939
- 42. Journals, 1925-1929
- 43. Miscellaneous Publications, 1925-1929
- 44. Financial papers, 1942-1947
- 45. Financial papers, 1942-1945
- 46. Financial papers, 1939-1942
- 47. Financial papers, 1950-1952
- 48. Financial papers, 1939-1940

## **Box 25 - Samuel Fausold**

### **Folders:**

1. Financial materials, 1940-1942
2. Financial materials, 1930-1942
3. Financial materials, 1934-1944
4. Financial materials, 1945-1950
5. Financial materials, 1943-1951
6. Financial materials, 1921-1950  
Gettysburg College, College Bulletin, 1932-1938

## **Box 26 - Samuel Fausold**



1. Class reunion, 1920-1930 (Gettysburg College)
2. Correspondence, 1931-1936, Samuel Fausold, Supt. of Schools, Monessen, PA
- 2A. Gettysburg College Bulletins/Alumni
3. Miscellaneous, 1909-1936 - Gettysburg College miscellaneous

4. Recommendations, c1914 - S. Fausold received from Gettysburg faculty for School Superintendency in Irwin, PA
5. News Clippings, 1926-1936
6. Health, 1937 - Sample tests, etc. from Cleveland Clinic--Coronary thrombosis while President, Indiana State Teachers College
7. Health, 1948 - S. Fausold description of treatment of his coronary thrombosis condition
8. Housing, 1930  
Indiana State Teachers College
9. Papers, 1937 - Important speeches by Superintendent Ade and Samuel Fausold at Inaugural of Samuel Fausold. Fausold address lead article in School and Society, August 14, 1937.

## **Box 27 – Samuel Fausold - ISTC**

### **Folders:**

1. Papers, 1937-1938 - Mostly ISTC publications
2. Petition Class of '38 - 2/3 of the graduating class, 103 students signed as seniors walked out of annual meeting when non-alumnus son of former PA Governor John Fisher and others accused S. Fausold of playing "politics" in the shifting of Jeanne Ackerman to "placement" appointment and appointing Richard Madden, Ph.D. Governor Fisher had lived in Indiana.

*"We, the undersigned, members of the class of 1938, make this means of expressing our sincere and wholehearted admiration, respect, and esteem for Dr. Samuel Fausold, President of Indiana State Teacher's College, and his administration. We protest against certain ill-advised and unfounded attacks against him on the part of a small minority of the college alumni in a meeting today, May 21, 1938."*

3. Presidential Bulletins to Faculty Members--important S. Fausold communications to all faculty members
4. Oak Yearbook, 1937. Dedicated to Samuel Fausold, with his bookplate. Includes inaugural program.

**Box 28 - Samuel Fausold at ISTC**

Folders:

1. Papers, 1936
2. Irwin Public Schools, 1917
3. Marriage, 1912--important send off by Edna Fausold Uncle, Berkey Boyd
4. Miscellaneous, 1936--Year S. Fausold became president, PA Teachers College, Indiana, PA
5. Miscellaneous, 1914-1948. In one letter S. Fausold describes who is to be notified in case he does not return from the Cleveland Clinic in 1937. Also, S. Fausold analyzes national political situation.
6. Miscellaneous, 1939  
Retirement
7. Addresses, n.d.
8. Course Reviews, 1933 - Typical letter
9. Field Notes, n.d.
10. News Clippings, 1930-1936
11. News Clippings, 1916-1937
12. News Clippings, 1937-1948
13. News Clippings, 1936

14. News Clippings, 1936
15. Political materials--very important coverage of Samuel Fausold efforts to achieve Superintendency of Pennsylvania Dept. of Public Instruction in George E. Earle governorship, 1935. S. Fausold handwritten note on meeting of GOP with Governor Earle (candid discussion of Earle colloquy). List of important school members of Democratic persuasion "actively interested" in supporting S. Fausold to be Supt. of Public Instruction. Teams: Bulick (19); Chapman (14); Davis (21); Grose (20); Haberlen (20); Kurtz (10); Levy (15); McIlhatten (10); parenthetical numbers are non-partisan schoolmen to be contacted to support Samuel Fausold to be State Supt. of Public Instruction. (Listed below are S. Fausold's notes on a colloquy between Republican leaders who called upon Governor George H. Earle retention of Republican James M. Rule as Superintendent of Public Instruction.)

*On May 28<sup>th</sup> Ben Graham, Maxwell Foster, Dickey, McMasters, Laranine went to Harrisburg to see Earle. They had no date with Earle but he agreed to see them. Ben Graham was speaker. He said that Rule was popular. So the Governor said, "You would sacrifice efficiency for popularity. This man Rule recommends the dropping of 3 State Teacher Colleges and then goes out in those communities and makes speeches for them. I am . . . and am doing best I can. I don't propose to reappoint Rule. Graham said, "We assume you are . . ." Then the governor got mad. He said, "You assume! You assume! He halted Ben then and there and told him to sit down.*

*-Samuel Fausold*

16. Publications, 1933
17. Rotary Club, 1933-1934
18. School Reports, 1933-1936
19. New Deal, n.d.
20. Norwin High School, 1918-1923--S. Fausold, Supt.
21. Obituary and Memorial, 1948--death, Samuel Fausold

22. Miscellaneous--fraternity and Green St. Lutheran Church report, Green St., Harrisburg
23. Publication, "A Study of the Comparative Effectiveness of Single and Double Classes When Taught by an Individualized Technique"--This was Samuel Fausold's University of Pittsburgh Ph.D. dissertation. (Perhaps S. Fausold thought teaching should take form of large classes or of more independent contract form.)

S. Fausold Ph.D. dissertation finding, University of Pittsburgh (S. Fausold Ph.D. dissertation findings, University of Pittsburgh, regarding use of large class vs. small class. [See full list of findings in Papers]):

#### *Findings of the Dissertation*

1. *Large classes of approximately 75 pupils may be organized and taught without any statistically significant loss in such subjects as mathematics, social science, English usage, English literature, and general science in the grades of the junior high school.*
2. *It is probable that English literature and social science can be taught in large classes with a higher degree of effectiveness than mathematics, English usage, and general science.*
3. *Informational mathematics can be taught in large classes as effectively as in small classes at the junior high school level. Computational or the drill phases of mathematics, however, can be taught more effectively in small or single classes of approximately 40 pupils.*
4. *General science can be taught more effectively in small classes than in large classes. However, the advantage in favor of a class of 35 pupils over a class of 70 pupils is relatively slight and not statistically significant.*
5. *Class management with large groups should be such as to cause a minimum of delay in such routine activities as distributing textbooks and other teaching materials.*
6. *Teacher who have charge of large classes either should be given an off-period or clerical help in order to take care of paper work and certain routine duties.*
7. *Provisions should be made in all building programs to assure sufficient flexibility in school buildings to make possible the operation of large classes. --Samuel Fausold*



- 24. Religious materials, 1906
- 25. Religious materials, 1916
- 26. Resumes, n.d.
- 27. Scrapbook, 1939 (News accounts, S. Fausold background regarding Presidency, ISTC)



*Samue Fausold, ISTC Graduation  
May 29, 1939*

- 28. Scrapbook, March 18, 1939 – (S. Fausold's partial accomplishments; See Indiana Penn in Papers for full account.)

*The scholastic standards have been raised. Instructors with no degree have been retired. In case of vacancies young candidates of successful experience with M. A. or Ph.D. degrees have been secured. During this administration the number of faculty members with earned doctorates has increased 55 percent. Every possible stimulation has been given to students in the college to hold to a high level of achievement. The recent announcement of Dean Smith concerning the Dean's Honor list is an indication of the interest of the administration in high scholarship.*

*-Indiana Penn*

## **Box 29 - Samuel Fausold – Samuel Fausold, Miscellaneous**

### Folders:

1. Slippery Rock State Teachers College, 1934--Samuel Fausold, candidate for Presidency
2. Teaching Certificates, 1914
3. Teaching Materials, n.d.
4. Term papers, n.d.
5. Term papers, n.d. (M. F. Fausold II conversation with Judge John J. Driscoll regarding his early contact with Mary Fausold Welty. See Folder 5 in papers for full transcript.)
6. Thiel College, 1931-1935 (S. Fausold, trustee)  
University of Pittsburgh
7. Dissertation Material (Ph.D.), 1934-1935--comparative effectiveness, double and single size school classes
8. Dissertation, 1934, Abstracts
9. Thesis Material, 1910
10. Thesis Material, 1933  
Department of Education
- 11-15. A Summary Report of the Joint Educational Costs Survey Commission. Large Harrisburg Study overseen by S. Fausold as Deputy Superintendent, 1935; Approximately 500 pages raw data regarding correspondence findings regarding condition of PA public schools, 1935. This was a massive study to determine quality (or lack thereof) of Pennsylvania schools. One dissertation writer described Pennsylvania Dept. of Public Instruction in 1930s worst such in the nation.
16. Samuel Fausold ID Cards

17. Samuel Fausold lapel pins (in three ring binder)

### **Box 30 – Family Members**

Folders: (Relations and Related Families)

#### **Boyd, Berkey**

Diaries (Uncle Edna Breegle Fausold and friend of S. Fausold. Important Republican leader (PA legislator, cabinet member, etc.), 1903-1924.  
13 vols.

1. Papers, 1924 - regarding Boyd's ancestry and connection to Lt. T. Boyd of Boyd-Parker Massacre, Genesee Valley
2. Story of Daniel Boyd from original handwritten account.
3. Boyd Family, 1916-1924

#### **Caldwell, Donald Edward, Sr.**

4. Memorial service, 1988

#### **Driscoll, John**

5. Correspondence and news clips (Great grandson of Mary Fausold Welty, Westmoreland County Judge), 1995-1997--transcript of Driscoll and MLF II is deposited here.

(M. L. Fausold II conversation (partial) with Judge John J. Driscoll  
regarding  
his early contact with Mary Fausold Welty; only a few pages)

*September 28, 2000*

*J. Driscoll: As you had asked me, I'm the son of Jean Cook and Francis Driscoll. Jean was the daughter of Martha Welty and J. H. Cook, and Martha was the daughter of Mary Fausold. In a quick synopsis, my grandmother, Martha Welty, was a very strong figure in my life. She was*

*born in 1882. My grandfather, J. H. Cook, was born in 1876. They were married in probably around 1907 or 1908, and my grandfather went into the business of the lumber company, which he bought in 1909. He built homes and sold lumber for over 50 years, until his death in 1960.*

*M. Fausold II: Where did he get the money to buy that? How did he get into business?*

*J. Driscoll: Well, he'd done with a horse and buggy. He'd been a carpenter. He was born over in Bedford County and built homes. He kept a detailed financial diary in 1901 and would frequently make \$65 or \$70 per month gross and spent \$45 or \$50 a month and had \$25 or \$35 per month. He counted every penny and become quite a businessman and knew lumber intimately. He was very successful over his lifetime. Lived in Youngwood and had his lumberyard in Yukon. He used to get to work – he didn't have a car until the first seven or eight years after he started business – he would frequently hop an early train and then he would jump from the train down around Yukon and would transport the lumber by horse and wagon. I'm not sure when he bought the first lumber truck, but he didn't have a vehicle until . . . up in Wellintown, I think that was probably around 1915. I think it was a Buick, but I'm not sure of that. I'm not even sure Buicks were built at that time. At any rate, I know my grandfather, for his entire lifetime, would only go with Buicks. He always bought, about every other year, a new Buick, and then he would torture himself by calculating the miles per gallon that he would get. I remember one day when I was a child, some of these Buick Roadmasters getting 5 miles to a gallon. I remember him saying, "Well, this car's pretty expensive to drive." I'm sure it was, 5 miles per gallon. He once owned the Yukon Wealth Telephone Company, but disposed of it in 1946 because he viewed it as a nuisance. It got in the way of the lumber business. Shortly after he sold, actually gave it away to the man that ran it for him, his name was Francis Walker, or John Walker, I mean, the Westinghouse Plant moved in, and within a matter of 15 years, the lumberyard was out of business, and the Yukon Wealth was a thriving telephone exchange which produces great revenues to this day. We've always laughed about that. Martha Welty Cook was a very strong figure in our life. My grandmother virtually paid my way through college and law school and my sister's and brother's as well, at least in large part. She always assured me that I would be able to get a higher education and nothing would get in my way. I also remember that when I went to law school, she told me that my grandfather always wanted to have a lawyer in*

*the family. My grandfather had a fourth grade education, and of course did a great deal with it. His education stopped in the fourth grade in the schools down there, but he just learned from jump. My grandmother said that my grandfather was very happy to have a lawyer in the family, so I was always proud of that. My grandmother died in 1968, and I became their proxy until 1970. Oddly enough, I went to work for the lawyer that was handling my grandmother's estate, and I remember him giving me a check when I started to work for him, saying, "I hope to give you part of the fee from your grandmother's estate, the legal fee for your grandmother's estate." That was quite a sum of money. I received a check from Mr. Persian in the amount of \$4,200 in 1970, and I used that as part of the down payment on my home. So I was always quite taken by that—it's not like I owed her a great deal. She often spoke of her mother, Mary Fausold Welty, and she spoke of her with, not extensively or overtly, but she always communicated to me such respect for her mother, such a kind of regard, a reverence, a devotion, and lo and behold, I found through my mother that everybody in the family felt that way about Mary Welty, my great-grandmother. I have always treasured the most very favorite picture that I have. Of all the pictures that I have in my possession, it's a picture of me, taken as a child, maybe a year or so old. I think it was summer of 1943, sitting in Grandma Welty's lap.*

*-John Driscall  
Martin L. Fausold II*

5A. Transcription of conversation between Judge Driscoll and MLF (II)

**Box 31 – Family Members**

**Freeman, Philip (Great-granddaughter of Phillip Freeman married  
John Fausold)**

(the battles, etc.) Also see Box 1, Folder 6.



*Philip Freeman's Kitchen*

1. Papers, 1939, of "Revolutionary Fame"; P. Freeman Reunion, 1924

"Philip Freeman of Westmoreland County, 1743-1829" - Material by Paul Welty and Rebecca Kaminsky. (See excellent biography by Rebecca Welty Kaminsky of same title in Box 1), 1999; also, "Phillip Freeman, An Early Pennsylvania Pioneer, 1774-1829," 1998

*Short Biography of Phillip Freeman  
Revolutionary Fame  
(from Box 31, Welty mss.)*

*Phillip Freeman was born in 1743 and was of German ancestry. He married Barbara Bonjour, daughter of Andrew Bonjour, of Fairfield Township, Westmoreland County, Pennsylvania. The name of the wife was obtained from a deed executed by Phillip, dated January 7, 1775, both having signed it. This deed is on record in the Recorder's Office of Westmoreland County, Pennsylvania in Deed Book Volume A, page 49.*

*There are seven deeds on record that were executed by Phillip Freeman and Barbara Freeman, his wife. On all of these deeds, both sign their name by making their mark – this giving us reasonable grounds to believe that neither one could write – or if they could, could not write in the English language.*

*There is a tradition that has come down to us from our forefathers that Phillip Freeman's wife's name was Mary Link. There are two deeds on record in the Court House, one dated September 24, 1807 and recorded in Deed Book Volume 8, page 233; the other dated April 6, 1808, both signed by Phillip Freeman, tavern keeper of East Liberty, Pa. (now Laughlinstown, Pa.) and Mary Freeman, his wife. In both of these deeds, both parties signed by making their marks. It may be a mistake, but in going over the records, one would be inclined to believe that Barbara and Mary were one and the same person, and that her maiden name was Mary Barbara Bonjour.*

*Phillip Freeman at one time owned about four acres of land on what is now known in Greensburg as Academy Hill. On March 10, 1789, Deed Book D, page 91, he conveyed two acres of this land to the trustees of the Catholic Church. The large Catholic School and the beautiful new Cathedral on North Main Street, Greensburg, are now located on that land. The other two acres were later sold by Phillip and the title to the same eventually vested in the School District. The costly new High School of Greensburg is erected on that land. Phillip Freeman was not a Catholic. It has been hinted by many that he was a Catholic because he conveyed the land before mentioned to the church, but it was sold, and not a gift.*

*Phillip Freeman was the father of nine children. He was a soldier in the Revolutionary War, having enlisted in 1776 in Captain Samuel McCune's Company, Colonel Watts Regiment, in what was known as the "Flying Camp." After serving an enlistment of 6 months, he re-enlisted the same year in Virginia in a company commanded by Captain George Rice, next by Captain Charles Portfield, and afterwards by Captain Gamble. Phillip fought in the battles of Brandywine, Germantown, Monmouth, and Stony Point, serving three years, the full term for which he enlisted. His regiment was commanded by General Daniel Morgan, but upon Morgan's promotion it was commanded by Colonel Feelerger from whom he received an honorable discharge in Philadelphia. Correct information as to Phillip Freeman's Revolutionary War record was found in Pennsylvania Archives, Second Series, Volume XV, page 25, page 719, and Volume XXIII, page 518.*



### **Fry Family**

2. Family History, 1998
3. Family Reunion, 1948
4. "A History of the Fry and Marstellar Family," 1963 and William Pritts II material.

### **The Private War of John R. Houser (husband of Alice B. Fausold)**

5. Autobiography, "I never had it so good," n.d.; Home page, Internet, done by Houser son, M. L. Houser (caught attention of Tom Brokaw)

### **Newell family**

6. Newill family and Kecksburg history, n.d.

### **Box 32 (MSS of Shank family, Ann S., wife of GMB Fausold)**

#### **Folders:**

#### **Shank, Anne**

Anne Shank, student at ISTC, became wife of Mac Fausold. Her father, O. J. Shank, Windber, PA, Mr. Democrat, physician, very prominent citizen.

1. Correspondence, 1940
2. Correspondence, 1941

#### **Shank, O. J.**

3. Correspondence, 1927--see above

### **Welty family (Welty family of Mary Fausold Welty, daughter of John Fausold) – Sketches of family members**

**Box 33 Photographs (of Fausold reunions and individual Fausold family)**

Folder 1:

1. MLF
2. John Fausold (II)
3. Charles, Samuel, John Fausold (Brothers)
4. Grace Fausold
5. Samuel & John Fausold
6. Ada Fausold (II)
7. Ada Fausold (II)
8. Ada Fausold
9. M.L. Fausold homestead, Lycippis, PA
10. Hill Church windows
11. Philip Freeman home
12. MLF (II) & Springhouse
13. John Fausold residence, 1830-80
14. S.F. (Sr.) at Thiel College
15. S.F. (Sr.) at Thiel College
16. S.F. & Norwin H.S.
17. Edna Breedle Fausold

18. Ada Fausold
19. John & Harry Fausold
20. “Uncle Will”
21. Sam & John Fausold
22. Ellen Freeman Tombstone
23. Philip Freeman kitchen & house (18<sup>th</sup> Century)
24. S.F. (Sr.)
25. Views of spring house
26. Samuel Fausold at Gettysburg College
27. Samuel Fausold, Sr.
28. George Fausold
29. George Fausold
30. Sam & Charles F.—home from Gettysburg
31. Sam, with team
32. Sam home from college
33. MLF (I) homestead



34. MLF (I) homestead
35. Edna & Sam on spring house
36. MLF (II)
37. MLF (I) homestead
38. S.F. (Sr.)
39. 39 Oak St., S.F. (II)
40. Hillchurch
41. Portrait, John F. in painters

**Box 33 Folder 2 Background to Samuel Fausold and Forebears**

1. M.L. Fausold (I)
2. John Fausold (II)
3. Charles, Samuel, John Fausold (II)

4. Grace Fausold
5. Sam & John Fausold (II)
6. Ada Hayes Fausold
7. Ada Hayes Fausold



*Ada Hayes Fausold & Samuel Fausold  
Grace Fausold (left) & Ada Fausold (right)*

8. Ada Hayes Fausold
9. Ada Fausold
10. Church (Fausold) windows (Trauger)
11. Philip Freeman home

12. MLF (II) Spring House
13. John Fausold residence, 1830-80, Kecksburg, PA
14. Samuel Fausold, Sr. at Thiel College
15. Samuel Fausold, Sr. at Thiel College
16. Samuel Fausold, Norwin, PA
17. Edna Breegle
18. Ada Fausold
19. John & Harry Fausold
20. "Uncle Will"
21. Samuel & John Fausold (II)
22. Ellen Fausold Tombstone
23. Philip Freeman Tombstone
24. Samuel Fausold (Sr.)
25. MLF (I) spring house

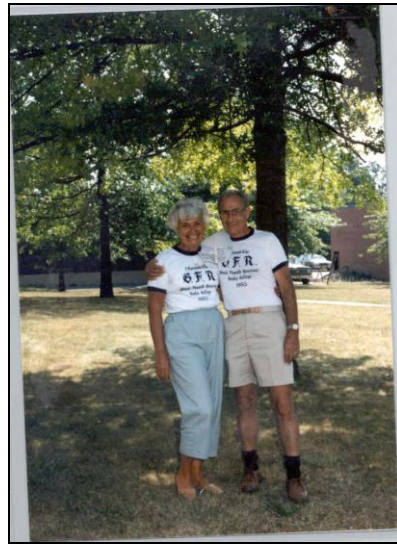
**Box 33 Folder 3 (Mostly Harry Fausold family)**

1. Helen Fausold family: daughter of Clyde, son of Harry Fausold, son of John
2. Harry Fausold gravestone, Hill churches, Trauger, PA
3. Ellen Freeman gravestone, wife of John Fausold, Trauger, PA
4. Vera Josephine gravestone, daughter of Harry

5. Charles Fausold gravestone, etc. – son of Harry Fausold
6. Hill Churches, Trauger, PA
7. Sally J. Fausold Jones & Paul Welty, 1984 IUP
8. Charles Foster Fausold, school gang
9. John Fausold tombstone

**Box 33 Folder 4 (Mostly 1984 Keuka College Reunion)**

1. Fausold Mich-Lu-Ca, Michigan Reunion, 1968
2. Fausold Reunion, Greensburg, PA, 1970s
3. Great Fausold Reunion, 1985 – Keuka College – descendants of Martin L., Mary & Harry Fausold
4. Informal group of photographer, GFR, 1985
5. Fausold Family, Keuka College, 1984
6. William Fausold family
7. Charles D. Fausold descendants
8. M.L. Fausold (II) and family
9. “Gray” Fausolds—“Ciddy” Weir, Patsy Fausold, Sally Jo Jones, Helen Fausold, Alice F. Houser
10. More photographers
11. Sally Fausold Jones & Martin Fausold, 1985. In 1985, after a separation of nearly 50 years, Sally Fausold Jones and Martin embraced again and recalled those Indiana, PA days when they went uptown and shared sundaes.



*1937 Sally Joe & Martin II 1984*

12. Sally Fausold & Martin Fausold, 1939
13. Brothers Martin & George M.B. Fausold, 1939
14. MLF (I) Blood grandchildren Alice, William, Martin (II), Mac, Ciddy, Patsy
15. Weltys – descendants of Mary Fausold Sherman
16. The William Weir family
17. Alice Eleanor Parish
18. Alice Shimshock, Ginny Bare Frances, James Frances
19. Fausold family in-laws
20. Sally Jo Jones and Helen Conley (daughter of Clyde Fausold)
21. Blood Fausolds
22. G.M.B. Fausold

**Box 33 Folder 5 (Reunions, Geneseo, 1995; IUP, 1998) - Photographs**



1. Identification of 1998 GFR-IUP
2. Reunion, GFR, Geneseo, 1995
3. GFR-IUP, 1998, David Sheaffer, Rebecca W. Kaminski, 1998
4. G.M.B. Fausold family, 1998, IUP
5. G.M.B. Fausold family, 1998, IUP
6. Jack Houser family, 1998, IUP
7. James Sheaffer family, IUP, GFR, 1998
8. MLF (II) and Judge Driscoll
9. Ciddy Fausold family, IUP
10. MLF (II) family
11. Weltys: Becky Kaminsky, John Driscoll, Bob Welty, Lucy Newhouse
12. MLF (II), Coe Dee Mowers, 1998
13. 1998 GFR-IUP
14. Martin & Marjorie Fausold with Larry Kroah (IUP Director of Library who launched whole alcove approach)
15. M & M Fausold and Phil and Donna Zorich
16. GFR Geneseo, 1995. MLF (II) lecturing
17. S. Fausold children at his grave site (identified)
20. IUP officials and Charles Fausold, 1999
21. Mazons & Denchys, 1998 – GFR, IUP, 1998

22. Charles Fausold, Phil Zorich (IUP officials), 1989 & MLF and company
23. Portrait of Samuel Fausold
24. 1998 – MLF & Patsy son
25. Adam McCaffery at GFR, 1998
26. Jack Houser, Jim Sheaffer, MLF (II), Ann Fausold, 1998, GFR, IUP
27. GFR, 1998, IUP, Sheaffers
28. Jim & Kathy Lingscheit, GFR, IUP
29. David Sheaffer, Marge F., Charles F., 1998, GFR, IUP
30. Ann Fausold Kids, 1998 GFR/IUP
31. Jim Lingscheits & Jim Floms, 1998 GFR/IUP
32. William Fausold & kids, 1998, GFR/IUP
33. Ann Fausold and kids, 1998, GFR/IUP
34. Edna J. Denchy & Alice Parish on guitar, 1998, GFR
35. MLF (II) GFR/IUP 1998 GR
36. MLF (II) Judge John Driscoll, GFR/IUP, 1998

**Box 33 Folder 6 (Misc. half of 20<sup>th</sup> Century)**

1. Edna, Pearl, and Hal Breegle
2. Edna Breegle
3. Edna Breegle
4. Edna Breegle

5. Sam F. at G-Burg, c1916
6. Sam & Edna, 1913
7. Sam at G-Burg, c1913
8. Sam with pony, c1902
9. Edna & Sam, 1918
10. Mother Howell & Martin, 1923
11. Patsy, 1920s
12. Mac
13. Martin & Patsy, 1925
14. Sam, Tim Horner (husband of Grace), Charles
15. Sam, Jr.
16. Classic picture of Charles D. Fausold
17. In Monessen – in back: MLF (II); in front: William Ciddy, Alice Fausold, 1933
18. Fred Daniels, Jr., & MLF (II), 1934
19. Bares & Fausolds, Monessen
20. Ciddy Fausold Weir



*Persilla Fausold Weir  
Fausold Family Genealogist*

21. Harrisburg
22. Valoris, NY
23. Old Dorm, G-Burg College
24. Dedication of Fausold Alcove

**Box 33 Folder 7 (Charles D. Fausold)**

1. Charles Fausold with family horse
2. Sally Jo & Chuck Fausold
3. Son Charles on pony
4. Charles, Olive, and son Charles with Mr. Schearer

**Box 33 Folder 8 Charles D. Fausold) – N.Y. Fausolds**

1. Charles D. Fausold (Press)
2. Charles D. Fausold, G-Burg College

3. *Charles D. Fausold, John Fausold, Samuel Fausold (Brothers)  
in NY 1945*



4. Same group (with MLF (II))
5. Alice & Ciddy F., 1951, in NY
6. Bill & Alice F., 1974, NY
7. Mac, Ciddy, Alice, Martin Fausold, c1948
8. Friends of Charles F.
9. Eleanor Fausold, c1970
10. Fausold cousins, 1972, NY
11. Charles & Eleanor Fausold, 50<sup>th</sup> Anniversary

**Box 33 Folder 9 (Mostly Harry Fausold Family)**

1. Josephine Fausold, daughter of Harry Fausold
2. John Fausold portrait in Fausold Glenshaw home

3. Clyde Fausold, Glenshaw home
4. Helen Fausold in sled
5. Marion, Chuck, Sally Jo feeding chickens in Kecksburg
6. Mary Willets Fausold
7. Sally Jo Fausold & family
8. MLF (II) & Sally Jo F. Jones
9. MLF (II) & Sally Jo F., 1985

**Box 33 Folder 10 (Mostly Margie Fausold Mazon Wedding)**

1. Margaret F. Wedding, '73
2. Dr. Mazon & Mac F. at wedding, '73
3. Mac Fausold at Margie's wedding
4. Edna Jane & Paul (husband), 1960s
5. Margie F. at wedding
6. George F. at wedding
7. Margie F. & Jose Mazon wedding
8. Margie F. & Jose Mazon wedding
9. Margie wedding – Ann & Mac
10. Ann Shank, sister of Ann F.
11. Margie Fausold
12. Daryl, Ann, Mac Fausold

13. Alice Eleanor Parish & Ann Fausold
14. Bill Weir, husband of Ciddy F.
15. Mac Fausold, 1937
16. Margie F. wedding
17. Margie F. wedding
18. Jose Mazon
19. Jose & Margie at wedding
20. Margie F. wedding
21. Jose Mazon
22. Margie wedding
23. Mac
24. Mac
25. Edna Jane Fausold

**Box 33 Folder 11 (At Harry Fausold Farm) – Photographs**



*Brother's Charles R. Fausold & Clyde  
Sons of Harry Fausold*

1. John & Harry Fausold, c1890
2. Josephine Fausold, 1906
3. John Fausold farm



*John Fausold Homestead  
Kecksburg Pa.*



4. Clyde Fausold
5. Josephine & Charles R. Fausold
6. Harry Fausold farm
7. Josephine Fausold on back port
8. Mary Willets Fausold, wife of Clyde Fausold
9. “old barn” – Harry Fausold farm
10. Josephine Fausold & “old farm” house
11. Recent shot of old farm
12. Picture and brother of Josephine Fausold
13. Sally Jo & Marion Fausold & “Aunt Olive”
14. Path to old spring house
15. Sally Jo Fausold Jones
16. Ed Jones, husband of Sally Jo
17. Ed & Sally Jo Fausold Jones
18. Ed Jones
19. Recent picture of “Bronc” & Sally Jr.
20. Grandchildren of Chuck & Betty Fausold

**Box 33 Folder 12 (Harry Fausold Family)**

1. Josephine Fausold, daughter of Harry Fausold
2. Harry Fausold farm

3. Reunion at Harry Fausold farm
4. Harry Fausold & Clyde & Josephine, 1910
5. Plate of Old Homestead – Harry Fausold and Son Harry
6. Harry Fausold
7. Lucien Clyde Fausold as an M.D., 1914. Clyde was a graduate of the Medical School, University of Pittsburgh. He interned at the Allegheny General Hospital in that city where he met a nurse, May Willits. The couple was married May 10, 1916, settled in Glenshaw, a suburb of Pittsburgh, and raised four daughters. Dr. Clyde practiced medicine for twenty-four years in Glenshaw.



*Sally Joe, Marian, May, Anna May, Helen Fausold  
The Glenshaw Fausold's*

8. *At White House – Sally Fausold Jones & Son Major Edward Clyde Jones, President Jimmy Carter, Mrs. Carter*



9. Sally Jo Fausold
10. Dr. Clyde Fausold, WWI



11. Sally Fausold-Jones family

12. Tin Type – Harry & Ann Fausold
13. Charles R. Fausold
14. Harry Fausold
15. Harry Fausold grandchildren at GFR, 1984
16. Josephine Fausold
17. Clyde Fausold, wife & children
18. Harry Fausold family
19. Harry Fausold & wife
20. Charles R. Fausold
21. Old image of Charles F. Fausold (Chuck), Aunt Mary Fausold Welty & Harry F.
22. Harry F.
23. Clyde F.
24. “Chuck” F.



*U.S. Marine Charles Foster Fausold*

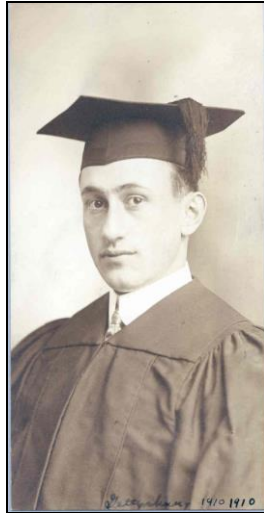
25. Clyde F. (footballer)

**Box 33 Folder 13 (Original John Fausold)**

1. John Fausold
2. Home of John Fausold
3. John Fausold
4. John & Harry Fausold home
5. Old homestead
6. Old homestead
7. Famous & only image of 4 Fausold children of John Fausold

8. John Fausold portrait
9. Charles R. Fausold, WWI

**Box 34 Folder 1 (Young Professional, Samuel Fausold) – Photographs**



1. Samuel Fausold, G-Burg grad
2. S.F. G-Burg, c1909
3. S.F. Young Administrator, c1920
4. S.F., 1918 Administrator
5. S.F., E. Huntington, c1913
6. S.F. Principal
7. S.F. Administrator, c1916

**Box 34 Folder 2 (Young Professional, Samuel Fausold)**

1. Berkey Boyd (Edna Uncle, Gov. Pinchot, Sec. Of Property and Supplies)

2. Mac as child
3. S.F., G-Burg grad, 1910
4. Classic picture, Grace, Samuel, Ada, Mother Ada
5. S.F., classic picture
6. S.F., classic picture
7. S.F., classic picture
8. PLATE
9. Cardboard plate
10. S.F. & school
11. S.F. & sons, ISTC
12. Ambridge J.H. School
13. Ambridge J. H. School
14. Ambridge J. H. School
15. Ambridge J. H. School
16. Ambridge J. H. School

**Box 34 Folder 3 (1920s)**

1. All images identified
2. All images identified
3. Irwin friends
4. S. F. classic of Samuel with family women

5. Mac & Sam, Jr. (portrait)

**Box 34 Folder 4**

1920's Fausold family shots 30+ all identified

**Box 34 Folder 5 (Indiana Years)**

Indiana years, 1930s

Approximately 100 images all identified

**Box 34 Folder 6 (MLF (II) Wedding; Family at NY) - Photographs**

1930s – MLF (II) at G-Burg wedding, family at NY.

Large picture of cousin, Martha Ann Bare, daughter of Pearl Bare, sister of Edna Fausold

**Box 34 Folder 7**

Indiana years, Samuel Fausold, Pres. (Indiana State College, 1936-39)

**Box 34 Folder 8**

S. Fausold, miscellaneous 1940s pictures identified

**Box 35 Folder 1**

Mostly 1940, S.F. (Sr.) family, identified

**Box 35 Folder 2**

S. Fausold family, 1940s, identified, Scottsdale, etc.

**Box 35 Folder 3**

Mostly 1960-1990, many Martin L. Fausold (II), identified

**Box 35 Folder 4**

MLF (II), 1940s-1990s, identified



### **Box 35 Folder 5**

Miscellaneous MLF (II), identified

### **Box 35 Folder 6**

Much of Marjorie F., c1990

**Box 35 Folder 7** – Photographs Martin II & Majorie Dimpfl Fausold on Honeymoon.

Marti Mowers' family & Sherry MucCaffery's family

### **Box 35 Folder 10**

(Dedication of Fausold Alcove, Indiana University of PA. Marti Fausold Mowers wrote this song about her grandfather at the dedication of the Fausold Alcove in 1995. Here is the first verse. All verses are in the Papers.



*Marti C. Fausold playing "One Fine Man" in 1995,  
Where Samuel sat in 1937*

#### *One Fine Man*

*My father he tells me of growing up in a time when people just didn't  
have enough. A fortunate child, the son of a man with a bible he held and a  
degree in the other hand. A righteous man, his wife by his side, with five*

*young children raising up with pride, for they knew he was a man of great stride.*

### **Box 36 Folder 1**

Martin Fausold II & Marjorie Dimpfl Fausold Honeymoon



### **Box 36 Folder 2**

Miscellaneous, identified

### **Box 37** - Photographs

Samuel Fausold—Diaries, mostly 1919-1948

### **Box 38 (Oversize)**

Military training certificate—Martin L. Fausold (II), 1940

Military scrapbook—Martin L. Fausold (II)

Scrapbook on Franklin D. Roosevelt—Martin L. Fausold (II) (kids' scrapbook, FDR)

Letter—Samuel Fausold to Beut Welty, 1940

Military Commission—Lucian Clide Fausold, 1918

Family Tree

Oversize novelty Telegram to Martin L. Fausold (II), 1998

Membership Certificate—Sons of the American Revolution—Samuel Fausold, 1949

Photograph—Samuel Fausold Family

Photograph—Great Fausold Reunion, 1985

Baptismal record—George M. B. Fausold, 1916

Diploma—Monessen H.S.—George M. B. Fausold, 1935

Certificate—“Palmer Method” Business Writing—Margaret Anne Shank, 1932

Great Fausold Reunion T-shirt, IUP, 1998

Compass Inn, wooden model

Diploma—Latrobe H.S. Samuel Fausold, 1906

Diploma—Gettysburgensis Collegii—Samuel Fausold, 1936,  
Doctorate

Diploma—Gettysburg College—Charles F. Fausold, 1951

Diploma- Mac

Marriage Certificate—Charley R. Fausold and Olive R. Bitner, 1920

Fausold Family and Homes, 18<sup>th</sup>-21<sup>st</sup> (carefully designed collage of family)

Freeman/Fausold Ancestors and Helen Gilmer Fausold Lineage

Diploma—University of Pittsburgh—Charles F. Fausold, 1958

### **Box 39**

Family Bible of John Fausold

### **Box 40**

Magnetic tapes.

- Ada Fausold discussing brothers Samuel Fausold, Aug, 6&7, 1957
- Charles Fausold discussing brother Samuel Fausold, May 7&8, 1965
- Speeches at Faculty Association of New York, Martin Fausold, Oct. 28&29, 1966
- Marti and Sam, Aug. 7, 1970, (2)

Audio Cassette Tapes

- Mac Fausold, discussing on public education, 3-27-99. Mac remembered
- Ann Shank Fausold interview, 3-26-99
- George Fausold and Maggie Slonecker, Aug. 1981
- Maggie Slonecker trip to Casper Fausold's farm, Sept. 1981

Photographs

- M.L. Fausold II and Judge John Driscoll, Greensburg, Pa, 9-28-00 (2 copies)
- Family Song, 1988

Video Tapes

- Ann Shank Fausold interview, 3-26-99
- George M. Fausold, Ma remembered, 3-27-99
- Alice Strong Wadsworth, conversation with Martin L. Fausold II, and Fausold conversation with Prof. Theodore Lowi, June 26, 2001

### **Box 41**

Video Tapes

- Martin L. Fausold II. Geneseo's Greatest Generation

- Fausold Family and Great Fausold Reunion, Kueka College, 1985 (3)
- John and Samuel Fausold Alcove dedication at IUP
- Fausold reunion banquet, Holiday Inn, Indiana, Pa., 1998 (2)
- Martin L. Fausold II interview for IUP Capital Campaign

## **Box 42**

Shoe molds of John Fausold

## **Box 43**

- Fry family photographs
- Pritts family- photocopies from William Pritts

### Epilogue & Rationales

“An Evolving Experiment in History: The Fausold Family in America”  
by  
Martin L. Fausold II  
An Understanding Of

1. The American origins of brothers Fausold with their 1792 landing in Philadelphia--Valentine to settle east of the Alleghany Mountains; Casper to cross the mountains to Bedford, Pennsylvania, thence to Westmoreland County.
2. The evolving story of family occupations/services/professions, from 18<sup>th</sup> Century to the present, variously in farming, tavern keeping, feed mills, lumber yards, law, education, medicine, invention, military, writing-- and various other undertakings. Family members manifested the above in such endeavors as: Justices of the Peace, county judge, county auditors, public school education, college president, White House physician, inventor, business proprietor.
3. The sociological conditions of family over time regarding ideology, religion, literature, art, occupation, class health; and other conditions, i.e., marriage, culture.
4. Some specific family identified institutions for study across time: Cook Lumber Yard, Pritts’ feed mills, Connellsville High School,

- Westmoreland County, Pennsylvania Department of Public Instruction, Indiana State Teachers College, State University of New York (the Family Collection expects to eventually include the records and materials of the above institutions pertinent to family members).
5. Via the indepth papers of Samuel Fausold, President, Indiana State Teachers College, 1936-39, the following segments are available for study:
    - a. The John Dewey “Progressive” idea of teaching as manifested by the “Ambridge Plan,” a contract system of education (similar to the Dalton and Yennette plans) carried out by Samuel Fausold in the Ambridge and Monessen public schools. Under such a system teachers would draw up contracts for students to sign. Students would then complete the contracts under “non-direct” teaching by teachers.
    - b. The study of the State of Pennsylvania public education in 1935 when Samuel Fausold, Deputy Superintendent of Public Instruction, oversaw the study.
    - c. The professionalization of public education in various Samuel Fausold superintendencies, Irwin, Ambridge, Monessen, Pennsylvania.
    - d. The transition of the Indiana State Teachers College from a normal school to a college, with political obstruction thereto.
    - e. The role of political identification in the selection of administrative staff at the state and college levels.
  6. The appreciation, especially by family, of the “feel” and content of their ancestors’ manuscripts and memorabilia, such as John Fausold’s Lawbook, the Pennsylvania House of Representatives Journal, the Justice of the Peace dockets, Martin L. Fausold’s diaries, Samuel Fausold’s handwritten autobiographies, George Fausold’s love letters, Cynthia Fausold’s (Schwanz’s) letters home from Bogata.
  7. Lastly, the Fausold Family Collection is to be enhanced by a widening of the papers’ reach to cover the Mary Fausold Welty and Martha

Fausold Fry branches. For the former family, Judge John J. Driscoll, James Cook and Rebecca Welty Kaminsky are committed supporters of the project, as is William E. Pritts II for the latter.

*-Samuel Fausold*