

INDIANA

1941

1942

G 50.6.1

STUDENT HANDBOOK

State Teachers College
Indiana, Pennsylvania



Volume XIV
1941 — 1942

IDENTIFICATION

Name

Home Address

Cottage Dormitory Room

Fraternity

Class Telephone

Curriculum

G50.6.1

TABLE OF CONTENTS

Foreword	3
The College	5
President's Message	7
General Information	9
College Government	31
Activities and Organizations	87
Athletics	127
Songs and Cheers	145
Scheduled Activities	157
College Calendar	164
Index	216

FOREWORD

When we present this issue of the Handbook to you, we feel proud that you have selected Indiana as your school — proud that Indiana will have the privilege of serving you — proud that this little book will be with you at all times, to answer the many questions which will confront you. By doing this, it has served its purpose.

Take this Handbook and go through it page by page. You will find it full of valuable information. Facts concerning college activities and organizations, athletics, scheduled activities, songs and cheers, and general information are only part of the questions you will find answered in these pages.

We urge you to become interested in one or more extra-curricular activities of the College. There are many organizations on the Campus which will develop you socially, mentally, and morally. By becoming affiliated with these organizations, you will be better qualified to enter the teaching profession.

Be friendly. It costs so little and is worth so much. Remember that "the only way to have a friend is to be one."

Please remember that students come and go, but "the College goes on forever." Each one of us is just a cog in this great collegiate wheel. Let each one do his part to make this great institution even greater than before.

Remember, "IT'S IN THE HANDBOOK."

THE COMMITTEE.

Paul A. Risheberger
Guy P. Davis
Clinton M. File
Harold W. Thomas
Paul J. Woodring

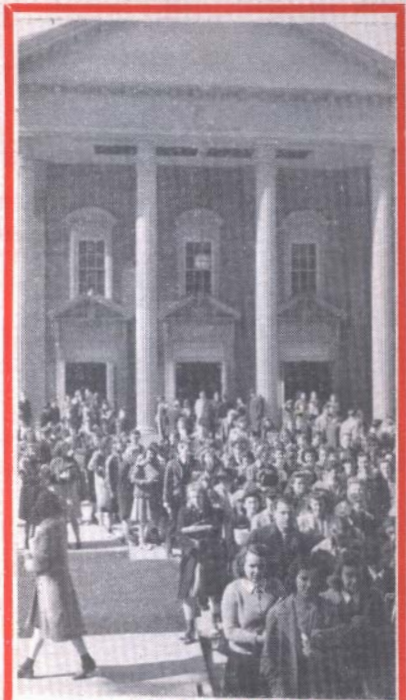


WINTER AT INDIANA

The College

1941

1942



ASSEMBLY IS OVER

PRESIDENT'S MESSAGE

Welcome to Indiana, Class of 1945!

You have selected Indiana as your home for the next four years, and we believe that you will be happy in your choice. When one enrolls in a college, he is making one of the most important decisions of his life. He is choosing an institution which will prepare him to battle life's great problems—a school which will always linger fondly in his memory during the years to come.

It is the duty of the administration and faculty of Indiana to give each student on our campus an equal chance to succeed. Economic, religious, and social differences have no effect upon your scholastic opportunities. Each of you may take advantage of the many campus activities carried on for your benefit, and of the close fellowship between students and instructors. In addition, the administrative offices will always welcome visits by the students of Indiana.

As a final word, I encourage each one of you to apply yourself faithfully, keep your personal life clean, and make the folks at home proud of you. By doing this we, too, will be proud of you.

Sincerely yours,

LeRoy A. King

HISTORY

From 1875 until 1927 this institution was organized as a State Normal School. In 1927 it became the State Teachers College at Indiana. Requirements for certification have gradually been raised with the result that all curricula are four years in length.

The college owns 34 acres of land, 23 of which are in the original campus. In the center of this campus is a historic oak grove about which are grouped the main buildings.

ALUMNI ASSOCIATION

Since its organization the school has graduated over eleven thousand students from its various curricula. Approximately twenty-two hundred degrees have been granted since Indiana was made a college in 1927. The support of these alumni is an important factor in the consistent growth of the College.

Alumni Associations are functioning in all parts of the country and they are definitely making valuable contributions to the college.

Through their efforts an organ will be in-

stalled in the College
date.

Alumni Day and
by class reunions
The President, Board
students welcome the

are issued from
of John Sutton
Mary L.
charge of
activities,
ome and
nel.

GENERAL INFORMATION

President

The office of LeRoy A. King, President of the College, is located on the first floor of John Sutton Hall.

Dean of Instruction

The office of Dean Walsh is located on the first floor of John Sutton Hall. The office is open daily.

M. J. Walsh is Dean of Instruction.

Registrar

The Registrar's Office contains the records and schedules of all students, Semester grades

are issued from this office on the first floor of John Sutton Hall.

Mary L. Esch is Registrar.

Bursar

All payments of fees and settlements of claims are made in this office located on the first floor of John Sutton Hall.

William Schuster is Bursar.

Dean of Men

The office of the Dean of Men is located on the first floor of John Sutton Hall. Office hours are posted. Conferences at other times may be had by appointment.

W. M. Whitmyre is Dean of Men.

Dean of Women

The office of the Dean of Women is located on the first floor of John Sutton Hall. Office hours are posted, and students may consult with her at these hours. Conferences at other times may be had by appointment.

Florence B. Kimball is Dean of Women.

Director of Personnel

The office of the Director of Personnel is located on the second floor rear of the gym-

nasium building and is open daily.

The Director of Personnel is in charge of student employment, extra curricular activities, and has charge of the social life of home and visiting athletic teams.

Paul H. Boyts is the Director of Personnel.

Director of Student Teaching

The office of the Director of Student Teaching is located on the first floor of the Laboratory School and is open daily.

J. M. Uhler is Director of Student Teaching.

Director of Laboratory School

The office of the Director of the Laboratory School is located on the first floor of the Laboratory School and is open daily.

John E. Davis is the Director of the Laboratory School.

Central Treasurer

The office of the Central Treasurer is located on the first floor of John Sutton Hall and is open daily for banking services.

The Central Treasurer supervises financial activities not directly concerned with the State, and is in charge of the student bank.

C. M. File is Central Treasurer.

Director, Extension and Saturday Campus Classes

The office is located on the second floor of Leonard Hall.

Harold L. Camp is Director.

Assistant to the President and to the Dean of Instruction

The office is located on the first floor of John Sutton Hall.

Ralph E. Heiges is Assistant to the President.

Assistant Dean of Women

The office is located on the first floor of John Sutton Hall.

Margaret I. Stitt is Assistant to the Dean.

Bookstore

The Bookstore carries all the textbooks used in the various classes. The management of the Bookstore is based on a co-operative student basis and is directed through the Student Co-operative Association. Classroom accessories are available at nominal prices. The Book-

store is open from 7:45 A.M. to 5:00 P.M. daily except Saturday, at which time it closes at 4:00 P.M.

Paul Woodring is in charge of this enterprise.

ABSENCE AND TARDINESS

Regular attendance is essential for satisfactory work. A student who is absent from class must bring an excuse from the Dean of Women, if a girl, or from the Dean of Men, if a boy. An unexcused absence means a mark of zero for the time missed.

ADVISORY SYSTEM

The three days prior to the beginning of college classes is known as "Freshman Week." During these days every new student has frequent contacts with his faculty adviser who assists him with his program, and advises him in curricular, scholastic, extra curricular, and other problems.

Students are expected to consult their advisers regularly. Advisers will assist the student in interpreting tests and other data and guide him to specialists in the several fields.

Every upper class student has an adviser from the field of his major interest who assists him in programming and advises him in personal, social, scholastic, and other matters.

ASSEMBLIES

College Assemblies are held weekly in the New Campus Auditorium. College Assemblies are usually held every Tuesday at 10:00 a.m. Students are urged to watch the daily bulletin and the INDIANA PENN for special Assemblies and dates.

To be well informed and to develop the co-operative attitude of a promising prospective teacher, it is desirable to make regular attendance a habit. While much outstanding entertainment is provided in assembly, its primary purpose is to reflect classroom activity and to supplement the work done in class by opportunities for developing sound appreciation of art, music, dramatics, and a fundamental knowledge of all the approaches to learning possessed by cultured people. Student participation in assemblies is encouraged. Regular attendance at class and assembly makes for scholarship and successful living.

Please Remember

- (1) Students should not carry on communication nor use text books during assembly.
- (2) The speaker shall always be given the courteous attention of the student body during the assembly.

COLLEGE VESPER SERVICES

The Vesper Services offer an opportunity for the students to gather together for a period of non-sectarian religious worship.

The services are conducted each Sunday evening by different campus groups. Religious questions are discussed from the viewpoints of the different groups.

These services have become an integral part of the religious life of every student.

Services begin at 6:15 p.m. Ralph B. Beard is chairman of the Vesper Committee.

CURRICULA

All curricula are four years in length, and all lead to the degree of Bachelor of Science in Education and the Provisional College Certificate in the appropriate field. The following curricula are offered:

- An Elementary Curriculum designed primarily to prepare for teaching in the kindergarten and in grades one to six.
- A Secondary Curriculum designed primarily to prepare teachers for teaching in junior and senior high schools.
- An Art Curriculum designed primarily to prepare teachers and supervisors of art in public schools.
- A Business Education Curriculum designed primarily to prepare for teaching commercial subjects in public schools.

- A Home Economics Curriculum designed primarily to prepare for teaching home economics in public schools.
- A Music Education Curriculum designed primarily to prepare teachers and supervisors of public school music.

CULTURAL LIFE PROGRAM

During the year the finest types of entertainments are provided for the students. Each semester there are brought to the campus distinguished lecturers and artists of the highest rank in music, drama, and the dance. These entertainments are available to the students at a small cost which is covered by the Student Activity Fee. Your "I" card admits you to these entertainments.

Watch the "Penn" for dates and for further information consult Lawrence C. Davis, Chairman of the Cultural Life Program Committee.

FIRE DRILL

A fire drill is observed one day each month by all college personnel. This is required by state regulations. Fire drill directions are posted in each hall of the college buildings. Students are expected to act promptly according to directions. Students should become acquainted with the proper exit from any location in the buildings on the campus.

Dormitory students please note regulations for Resident Women on page 52.

George P. Miller is College Fire Marshall.

GRADING SYSTEM FOR THE STUDENT

Explanation of Grades

"A" indicates an excellent grade of work.

"B" indicates a good grade of work.

"C" indicates a satisfactory grade of work.

"D" indicates a low grade of passing work.

"F" indicates a failure and no credit shall be given for the course so marked until it has been repeated in the regular way.

"I" is given to students who because of illness or other entirely satisfactory reasons have been unable to complete the required work, but have been doing in general a satisfactory type of work. This mark must be removed within two months after the opening of the next semester that the student is in school or become a failure. Upon completing the required amount of work the student may receive any mark to which the teacher feels he is entitled.

Quality Points

A system of quality points has been established as follows:

A grade of "A" gives three quality points for each semester hour of credit so marked; a

grade of "B" gives two quality points for each semester hour of credit so marked; a grade of "C" gives one quality point for each semester hour of credit so marked; and a grade of "D" gives no quality points.

Application of Quality Points

1. There are required for graduation or for permission to do student teaching a number of quality points equal to the number of semester hours' credit taken up to that time.

2. As many quality points as semester hours of credit also are required:

- a. For admission to a fraternity or sorority
- b. For holding an office in any school organization

3. In general a "C" average, that is, one quality point for each semester hour of credit, is the minimum requirement for being considered in good standing as a member of the student body. After the first year of attendance this shall mean an average of 16 semester hours and a minimum of 16 quality points for each semester of attendance.

ELIGIBILITY FOR STUDENT TEACHING

No student will be permitted to do student teaching until each of the following requirements is satisfied:

1. The number of quality points must equal or exceed the number of hours earned at Indiana. Students who have transferred from other colleges must have completed at least the equivalent of one semester at Indiana.
2. Candidates for the degree must have two semesters of work with a C-average and no failures in these semesters. One such semester shall be required for those who are seeking the State Standard Limited Certificate.
3. All required courses in English up to the teaching semester must be completed. The applicant must have a C-average in all these courses or he must have passed with a satisfactory rating a standard test in English form and usage, given by the College. Competency in English usage shall be demonstrated. Weakness in English skills, as shown by low grades and test scores, should be removed by repetition of courses, by regular attendance at the English Laboratory, or by both of these remedies. Each student is responsible for maintaining and improving his English skills.
4. A C-average in all courses that are to be used for certification in any particular field will be required.

Student teaching in the summer session is

restricted to those who have previous student teaching in this school or several years of actual teaching experience. Application must be made well in advance.

INFIRMARY HEALTH SERVICE

The College Infirmary is located on the fourth floor of John Sutton Hall. Students who become ill or who have been hurt are urged to report to the infirmary where competent registered nurses are always in attendance.

Physicians and surgeons are within easy reach.

Maude McDevitt is in charge of the Infirmary. Esther E. Snell is the Assistant in charge.

INFIRMARY HOURS

Week-day	Sunday
7:30—9:30 A. M.	9:30—10:30 A. M.
2:00—3:00 P. M.	7:00—8:00 P. M.
7:00—8:00 P. M.	

In case of emergency the Infirmary Health Service is available to students at all times.

LIBRARY INFORMATION

The College Library in Wilson Hall near North Gate, (Oakland Avenue entrance to the campus) will be open for visits of new and former students during registration week in order that everyone may early become acquainted with the new building and its pattern. New students are invited to come in

groups. Volunteer guides will be glad to explain briefly plans for the use of the library.

Library hours for the first semester of the college year, 1941-1942, are:

Monday to Friday: 7:45-5:30; 7:00-9:00

Saturday: 7:45-5:00

There will be due notice of further extension of hours. All residents of Indiana as well as college students are invited to use the library on Saturday afternoons from two to five o'clock. Materials of the Historical Society of Indiana County will be housed in the library.

Books from the reserve book room are borrowed for over-night use at 8:15 P. M., daily from Monday through Friday and are returned not later than eight o'clock the following morning. A waiting list for circulation of books on Saturday will be maintained. See direction sheets on file at the library desk.

Books from the open shelves are circulated for two weeks unless otherwise labeled or restricted at the discretion of the librarian. Penalties are imposed for late return of reserve and open-shelf books and periodicals. See directions sheets distributed at the library desk.

The new library provides a number of well lighted and comfortable reading rooms and the co-operation of all students is invited in maintaining them as quiet, pleasant spots for serious study and recreational reading.

Estella Slaven is in charge of the Library.

LOST AND FOUND

Students should report the loss of property in the dormitories immediately to the custodian of the building in which the articles were lost. Articles found should be handed to the Dean of Men and to the Dean of Women. A general lost and found department is maintained at the telephone office.

PLACEMENT SERVICE

The services of the Placement Bureau are available to all students of the College who receive certification. The directors of the various departments take an active interest in the placement of their graduates. Co-ordination of effort is secured through a central committee. The Bureau supplies credentials to employers who are seeking applicants for positions and serves as a center where graduates may keep their records up-to-date.

The Placement Bureau has offices in the Laboratory School.

J. M. Uhler is in charge of the Placement Service.

STUDENT EMPLOYMENT SERVICE

The Student Employment Service was organized in the Spring of 1940, the purpose being to help students find part time employment that will help in meeting their school expenses.

Efforts are made to find odd jobs about the town. All types of jobs are sought, especially those requiring unskilled labor, such as gardening, house-cleaning, janitor, furnaceman, etc. Other jobs include driving cars, washing cars, store jobs, stenographic, to the more skilled jobs of teaching the various musical instruments, show card writing, tutoring, butchering, etc.

Students who would like to obtain this help are asked to fill out an application blank in the Student Employment Office located on the second floor rear of the gymnasium. NYA application blanks may also be obtained in this office. This work is under the direction of the Director of Personnel.

COLLEGE POST OFFICE

The College Post Office is located on the first floor of John Sutton Hall. This is a branch of the City Post Office and is open each week day except Sunday. Mr. Paul Woodring is in charge of this service. Dormitory students please note regulations for Resident Women on page 52.

THE PSYCHO-EDUCATIONAL BUREAU

The Psycho-Educational Bureau is located in the Laboratory and Demonstration School of the college. Students are invited to avail themselves of the opportunities provided for a study

of their reading abilities, speech patterns, aptitudes, and personality-adjustment patterns. Opportunity is given for any student to come to the Bureau on his own initiative and to make appointment for conferences. It is the desire of the staff of the Psycho-Educational Bureau that its facilities be used by all individuals who wish to improve themselves in their preparation as teachers and as personalities.

The Bureau is in charge of Guy P. Davis and Ralph B. Beard.

RADIO BROADCASTING

Radio broadcasting constitutes an integral part of the instructional program of the College. Each semester, faculty members and students in various departments present several series of educational and entertainment broadcasts over Radio Station WHJB, Greensburg (620 on the radio dial). These broadcasts originate in the Little Theatre, located on the second floor of John Sutton Hall, and are transmitted directly to the broadcasting station over equipment owned and operated by the College. An elective course, Radio in Education, offered by the English Department but open to students throughout the College, provides necessary instruction in basic techniques. Educational broadcasts, planned especially for the public schools of Western Pennsylvania, are put on the air regularly and are open to students, faculty, and the public. Entertainment

broadcasts are presented at intervals throughout the year whenever a department has something of interest to the general radio audience. Students who are interested in engaging in these broadcasting activities should get in touch with Edna Lee Sprowls or C. C. Jones.

Please watch Bulletin for dates and time.

TELEPHONE OFFICE

This office is located on the first floor of John Sutton Hall. Addresses of the faculty members as well as the names and room numbers of the students may be obtained here. Telegrams are also received at this office for immediate delivery. Pay stations are located in John Sutton Hall. Dormitory students please note telephone service for Resident Women on page 55.

TENNIS COURTS

Tennis courts are open for play each weekday except Sunday. Students should consult with the Physical Education Department for permission and time schedule.

TRANSFER OF CREDITS

Credit will be given students transferring from other accredited colleges in so far as these credits will fit into the curriculum chosen by the student in this college. No credit can be approved for any course in which the grade received was the lowest passing grade in the school in which the work was taken.

CHURCH DIRECTORY

College students are always welcome at the religious services held in Indiana and are urged to attend regularly the church of their choice and to take an active part in its activities. Both morning and evening services may be attended.

A number of church organizations are to be found on the college campus. These organizations are social in character and students are invited to join the organization of their choice.

Baptist Chapel	North 9th St.
Rev. J. C. Doyle	
Christ Episcopal	902 Philadelphia St.
Rev. C. C. Belcher	
Christian Science	715 Philadelphia St.
Christian and Missionary Alliance	
52 Eleventh St.	
Rev. R. H. Burchell	
Church of God Mission	Reider School
Rev. H. W. Miller	
Evangelical	376 Church St.
Rev. H. L. Loveless	
First Regular Baptist	902 Church St.
Rev. Kenneth Estey	
First Christian	50 N. Fifth St.
Rev. Lawrence Maines	
First Church of God	314 Water St.
Rev. J. E. Hepburn	
First Presbyterian	760 Church St.
Rev. Harry B. Boyd	

First United Presbyterian	650 Church St.
Rev. S. A. Foster	
Free Methodist	418 Church St.
Rev. J. T. Logan	
Gospel Hall	Cor. Fifth and Locust Sts.
Rev. R. B. Baird	
Hebrew Unity Congregation.....	655 Phila. St.
J. H. Wagner, Rabbi	
Methodist Episcopal	703 Church St.
Rev. Chas. S. Applegath	
St. Bernard's Roman Catholic.....	216 N. 5th St.
Rev. James Brady	
Salvation Army	635 Water St.
William Hocking, Captain	
Seventh Day Adventist	672½ Phila. St.
Wesleyan Methodist	44 S. Twelfth St.
Rev. I. D. Swinehart	
Zion Lutheran	102 S. Sixth St.
Rev. Arthur J. Pfohl	

Services

Protestant

Sunday School	10:00 A.M.
Morning Service	11:00 A.M.
Evening Service	7:30 P.M.

Catholic

St. Bernard's Catholic Church holds four services each Sunday:	
8:30 A.M. 10:00 A.M. 11:00 A.M. 7:00 P.M.	

BUS SERVICE

Indiana is well served by several bus lines. Connections may be made in Indiana for points east, west, north and south. A few

of the bus lines operating in and out of Indiana are the Blue Ridge Lines, Edwards Stages, Harmony Short Line, and the Horrell Short Line. For information concerning bus schedules, please call the Indiana Hotel, The Moore Hotel, or Hess Restaurant.

MILEAGE LOG FROM INDIANA

Allentown	270 miles
Altoona	52 miles
Apollo	26 miles
Beaver Falls	97 miles
Bedford (via 56)	72 miles
Bellefont	114 miles
Blairsville	18 miles
Brookville	48 miles
Brownsville	70 miles
Butler	50 miles
Cambridge Springs	148 miles
Chambersburg	130 miles
Charleroi	63 miles
Clarion	62 miles
Clearfield	58 miles
Clymer	9 miles
Cresson	32 miles
Dubois	49 miles
Ebensburg	25 miles
Erie	174 miles
Franklin	97 miles
Gettysburg	155 miles
Greensburg	37 miles
Grove City	79 miles

Harrisburg	170 miles
Holidaysburg	48 miles
Johnstown	28 miles
Kane	103 miles
Kittanning	28 miles
Lancaster	215 miles
Latrobe	30 miles
Lewistown	121 miles
Ligonier (via 56 and 711)	40 miles
Lock Haven	143 miles
McKeesport	57 miles
Meadville	133 miles
Mercer	88 miles
Meyersdale	82 miles
New Bethlehem	45 miles
New Castle	80 miles
New Kensington	40 miles
Oil City	99 miles
Philadelphia	264 miles
Pittsburgh	60 miles
Punkstutawney	28 miles
Reading	235 miles
Scranton	263 miles
Somerset	60 miles
State College	102 miles
Tyrone	79 miles
Uniontown	73 miles
Vandergrift	28 miles
Warren	132 miles
Washington	81 miles
Wilkesbarre	246 miles
Williamsport	169 miles



DEMOCRACY AT WORK

College Government

1941

1942

STUDENT PARTICIPATION

The committee on Student Participation in College Management, organized in the school year of 1939-40, was composed of five faculty and five student members. During the college year 1940-41 the committee membership included twelve—five members from the faculty and seven students elected from the various departments and the Student Council. The purpose of the committee is to study existing conditions and to recommend methods for achieving, eventually, a maximum of student participation in college management. Certain parts of the committee's report have been put into practice. Student representatives have been elected from the various departments and the Student Council to the Athletic, Cultural Program, Assembly Program, and Participation Committees. These committees also have a faculty membership, but in all cases, there are more students than faculty representatives. Editors and Business Managers for this year's publications were nominated by a student-faculty committee and elected by the Student Council.

Last spring the complete report of the Participation Committee was presented before a college assembly.

The Student Council previously had approved certain parts of the report to be tried out. Consequently the Student Council for

this year has been enlarged with representatives elected from departments rather than classes. Following the election of these representatives, a college assembly was held in the form of a political campaign to present candidates for President of the student body, and for Vice-President. The officers were elected at an all-college election.

The Participation Committee will continue its study and recommend further changes in campus affairs.

LeRoy H. Snell is chairman of the Committee.

STUDENT COUNCIL

1941 - 1942

The Constitution of the Student Council printed on pages 35 - 39 is still the official constitution of that body. However, the council for the school year 1941-42 is organized along entirely different lines than set up in the constitution. As pointed out above (see Student Participation) last year's council accepted certain phases of the Student Participation Committee report and decided to suspend the Constitution temporarily and to experiment with the following:

1. Representatives to the Student Council were selected as follows:

Art Department	2
Business Education Department	3
Elementary Education Department	3

Home Economics Department	3
Music Department	2
Secondary Education Department	2
Departmental Total	15
Class Presidents	4
Presidents of	
Non-Resident Men's League	
Non-Resident Women's League	
Resident Men's League	
Resident Women's League	4
President Total	8

TOTAL MEMBERSHIP 23

2. Senior Departmental representatives were eligible for the office of President of the student body, and the person so elected became President of the Student Council.

3. Junior and Sophomore Departmental representatives were eligible for office of Vice-President of the student body and Vice-President of the Student Council.

4. The offices of President and Vice-President were filled by campus-wide election. They are:

Harry Mitchell, President.....Music Dept.
Paul Deane, Vice Pres.....Secondary Div.

5. The Student Cooperative Association, beginning the year 1941-42, is to be governed by a committee of six students appointed by the President of the Student Council and three

faculty members appointed by the President of the College, and will be called the Finance Committee.

The Student Council this year will consider changes in the following Constitution and in the Constitution of the Student Cooperative Association in the light of the above experimental changes.

THE STUDENT COUNCIL

Constitution

Article I—Name

The name of this organization shall be the Student Council of the State Teachers College, Indiana, Pennsylvania.

Article II—Purpose

The purpose of this organization shall be:

1. To promote in every way possible the best interest of the State Teachers College, Indiana, Pennsylvania.

2. To regulate all matters of student conduct which do not fall under the jurisdiction of the faculty, together with such other business as may be referred to it by the President of the College or the Faculty Committee composed of the Dean of Women, Dean of Men, and Dean of Instruction. All suggestions from students should first be presented to the Student Council.

3. To provide a more perfect organization which will maintain the ideals of the College

by student cooperation.

4. To promote the scholastic and moral tone of the College and thus to maintain high standards of honor, loyalty, and service.

5. To constitute a medium for the expression of initiative and the exercise of judgment in the management of student affairs.

6. To aid in the maintenance of good order in the College Community.

Article III—Membership

The membership of this Council shall be as follows:

1. Four representatives from the Senior Class, one of whom shall be a day student.

2. Four representatives from the Junior Class.

3. Three representatives from the Sophomore Class.

4. Two representatives from the Freshman Class.

5. One representative from the Women's Resident Student League.

6. One representative from the Men's Student League.

Article IV—Nomination and Election

Section I—Nomination

Each class shall elect a Nominating Committee of three members which committee

shall prepare a list of nominees for the Council. This list shall be published not less than one week before the election. There shall be no floor nominations.

Section II—Election

Election of the members of the Council shall be held during a regularly called meeting of the class during the last week in April; these members shall take office the following September.

Article V—Term of Office

The term of office shall begin the first day of school in September of each year, and continue until the close of the second semester.

Article VI—Qualifications

Each member must be a regularly enrolled student, carrying not less than sixteen (16) hours of work with at least a "C" average, and remaining in good standing.

Article VII—Vacancies

All vacancies shall be filled by a special election, except when six weeks unexpired term is left, in which case the remaining members of the Council shall elect a member for the unexpired term.

Article VIII—Officers

The officers of the Student Council shall be

President, Vice-President and Secretary-Treasurer. The officers shall be selected by the Council from its own membership, but the President must be a Degree Senior.

Article IX—Duties and Powers

1. It shall be the duty of the Council to consider such matters of student interest as may be presented by the students, either through recognized organizations or individually. The Council may also consider such matters of student importance as appear to offer an opportunity for helpful suggestions.

2. It shall be the duty of the Council to consider from the student viewpoint such matters as may be referred to it by the President of the College or by the Faculty Committee.

3. It shall be the duty of the Council to make suggestions and recommendations to the Faculty Committee concerning matters that have been considered.

4. It shall be the duty of the Council to deal with student problems and to make recommendations concerning matters of importance or interest.

5. Any action taken by the Council relating to legislation, administration, and disciplinary problems involving student relationships to the institution shall be subject to the veto powers of the President of the Institution.

Article X—Meetings

Regular meetings shall be held at least once

per month during the school year. Other meetings may be called by the President of the Council or by the Faculty Committee.

The Council may meet in joint session with the Faculty Committee whenever there are recommendations for consideration.

Ten members shall constitute a quorum.

MEMBERS OF THE STUDENT COUNCIL

1941- 1942

Music Department

Betty Hay, Junior Boarder
Harry Mitchell, Senior Commuter

Secondary Education

George Curley, Senior Boarder
Paul Deane, Sophomore Boarder

Home Economics

Martha Slack, Senior Boarder
Jane Lewis, Junior Boarder
Beth Grove, Sophomore Boarder

Business Education

Bill Reinish, Senior Boarder
Lon Bond, Sophomore Commuter
Paul Beckley, Junior Boarder

Art Department

Tom Brumbaugh, Junior Boarder
Roe Cunningham, Sophomore Boarder

Elementary Department

Vivian Sinclair, Senior	Boarder
Phyllis Hutchinson, Junior	Boarder
Don Gibson, Sophomore	Commuter

Classes

Donald Cassatt, Senior	Commuter
Marjorie Hill, Junior	Commuter
Arthur Price, Sophomore	Boarder

Non-Resident Men's League

President	James Dick
-----------------	------------

Resident Women's League

President	Ruth Wenerd
-----------------	-------------

Non-Resident Women's League

President	Mary Woodle
-----------------	-------------

Sponsor

Dean W. M. Whitmyre

STUDENT CO-OPERATIVE ASSOCIATION

The student co-operative association was organized in the fall of 1933, and is an organization that every student automatically joins when he pays his activity fee. The organization makes possible the College Bookstore, the Year Book (THE OAK), THE INDIANA PENN, lectures and entertainments, variety and intramural activities for men and women; and many other activities of equal value and rank.

The association is vitally concerned with promoting the welfare of the students in so far as this is involved in the activities of the college.

THE STUDENT CO-OPERATIVE ASSOCIATION

Constitution

See Item 5 under Student Council, Page 34.

Name

The name of this organization shall be the Co-operative Association of State Teachers College, Indiana, Pa.

Purpose

The purpose of this organization shall be

1. To have charge of the general activities of the school, such as lectures, entertainments, athletics, etc., which are supported by fees paid by the students.
2. To conduct a bookstore for the use of the students and faculty.
3. To receive and disburse the moneys received from the student activity fees and from all other sources from which revenues may be received.

Membership

The membership shall consist of fourteen students and seven members of the faculty. The student members shall be members of the Student Council and the faculty members shall

be the deans, the chairman of the Lecture Committee, the head of the Health Education Department, one member chosen annually by the Faculty Club, and one member chosen by the President of the College.

Officers

The officers shall consist of a president, a vice-president, and a secretary chosen from the membership of the organization and a treasurer who may not be a member of the organization.

Duties and Powers

It shall be the duty of this organization and it shall have power, subject to the veto of the President—

1. To appoint a Treasurer who shall handle the funds of the association and who must furnish a bond in the amount set by the association.
2. To appoint a manager of the bookstore and specify his duties and responsibilities.
3. To appoint on the recommendation of the manager such assistants in the bookstore as may be necessary and fix the compensation of the same.
4. To recommend to the President of the College the amount of the activity fee to be paid each semester by each student in the College.
5. To assign to each department, committee, group, or individual in control of any act-

ivity supported by the student activity fee the amount of money to be used by that department, committee, group, or individual. A tentative budget for the year, or, in the case of special requests, a written statement from the person responsible for the expenditure of the money, must be made before any money can be voted by the organization.

6. To require of any department, committee, group, or individual to which or to whom money has been voted, an itemized statement of all receipts and expenditures in connection with that activity over the period covered by the allotment of money. These itemized statements are to be accompanied by receipts or other evidence of all expenditures and are to form a part of the permanent records of the association.

Miscellaneous Provisions

1. Money shall be paid out by the Treasurer only upon the vote of the organization and upon the written order of the President and Secretary. These orders shall be retained by the Treasurer as his authority for payment.
2. No action of this organization shall become effective until approved by the President of the College.
3. The minutes of all meetings shall be kept by the secretary and shall include a record of all motions made and votes taken. These records shall be typed and one copy retained by the secretary as a part of the permanent re-

cords and one copy shall be filed with the President of the College. Both copies shall bear the signature of the President and shall show clearly whether any part or parts of the minutes have been approved.

RESIDENT WOMEN'S LEAGUE

Constitution

Preamble

In order to promote socialization of women students and their co-operation with faculty and administration, resident women have been organized and the following constitution and by-laws adopted.

Article I—Name

The name of this organization shall be "The Resident Women's League of State Teachers College, Indiana, Pennsylvania."

Article II—Objectives

1. The regulation of conditions for the promotion of happiness, good health, and right living.
2. The promotion of conditions for the development of courtesy, self-control, higher ethics and the earnest desire to strive toward higher standards of work.
3. The development of individual and group responsibility.
4. The stimulation of good fellowship and recognition of lawful authority.

5. The co-operation with faculty and administration in dealing specifically with interests and problems of all women boarding students.

Article III—Membership

All women students registered in the college who live in the dormitory under dormitory regulations are automatically members of the Resident Women's League.

Meetings

Regular meetings of hall groups shall be held on the second Tuesday of each month at 6:45 p. m. Special meetings may be called by hall president whenever necessary.

Article IV—Officers

The officers of the League shall be a president, vice-president, secretary nominated by League Council and elected by popular vote for term of one year. Election shall be held in April preceding opening of school in September.

Qualifications for Office

President and vice-president shall be juniors during their year of service; the secretary shall be a sophomore from the Business Education Department. Officers shall be of such personality and character as to command the respect and co-operation of the student body. Scholarship records shall be at least a "C" average.

Article V—League Council

Organization

The League Council shall act as the executive board representing resident women. It shall be composed of the presidents of each hall, elected by the hall groups, the officers of the organization, and the Dean of Women.

Meetings

Meetings of the Council will be held on the first and third Tuesday of each month at 6:30 in the office of dean of women, or at such other time and place as decided by the group.

Powers

1. The Council shall have full power to enforce the regulations of the Resident Women's League and to make new regulations as necessary.
2. Any student or student group not cooperating with League regulations shall first be reported to the president of the group, and if necessary be brought before the League Council for discussion and action.
3. Repeated offenses reported to the League Council shall be kept in files of the League and final action recommended to administration or Advisory Board on basis of these records.
4. The League Council shall act upon suggestions made by hall groups or refer these to the Advisory Board when such sugges-

tions are for the improvement of house and social relationships.

Article VI—Dormitory Organization

Membership

All resident students are members of the hall group in which they live.

Organization

A president and as many vice-presidents as are necessary to execute the duties on the hall shall be elected by the group at the beginning of the first and second semester. Nominations for hall officers shall be made by a committee appointed by the hall president in consultation with hall adviser, and all nominations shall be approved by hall adviser.

Temporary officers for each hall, to serve until end of September, shall be appointed the 1st week in May by the League president in consultation with hall adviser from the group reserving rooms on the respective halls.

Meetings

Regular meetings of hall groups shall be held on the 2nd Thursday of each month at 10:00 p. m. Special meetings may be called by hall president whenever necessary.

Article VII—Women's Advisory Board

Membership

Three seniors, two juniors and one sopho-

more, nominated by League Council, and elected by popular vote of resident women of each class in spring preceding opening of school in September; the League president; one resident faculty member appointed by President of the college for one year; the Dean of Women, and the president of Non-Resident Women's League shall make up the membership of the Advisory Board.

Meetings

The Advisory Board shall meet once every month at a time set by the group itself.

1. To develop standards of conduct suitable for college women.
2. To develop a friendly feeling among women, and to build a closer relationship between resident and non-resident students.
3. To consider and act upon recommendations from resident and non-resident women, to deal with infractions of rules at the request of the League Council, and to propose or suggest matters for League consideration.

Officers

Officers shall be a president, vice-president and secretary. President and vice-president shall be seniors. Secretary may be either a junior or senior.

Vacancies

If any Senior member elected is teaching off campus and unable to attend meetings,

a substitute shall be appointed by League Council until she returns to the campus.

BY - LAWS

Resident Women's League

ARTICLE I

Officers and Committees of Resident Women's League:

Section I—Duties of the President

1. To preside at League Council meetings.
2. To call regular and special meetings of the League Council.
3. To appoint temporary presidents of hall groups in May to serve until the end of September.
4. To appoint committees for League and make other appointments as necessary.
5. To call one general meeting of all resident women each semester.

Section II—Duties of the Vice-President

1. To preside at meetings in the absence of the president.
2. To head fire drill committee.

Section III—Duties of the Secretary

1. To keep minutes.
2. To carry on correspondence.
3. To post notices.
4. To prepare report for hall presidents.

5. To keep lists of all officers and committees.

Dean of Women

The Dean of Women shall be an ex-officio member of the League Council and the Advisory Board.

Section IV—Committees

1. Social Committee — to be in charge of entertainment and recreation for women students in co-operation with Student Council, to plan party for freshmen during Freshman Week.
2. House Committee — to receive all complaints and requests for better house conditions and report same to proper authorities.
3. Publicity Committee — to be in charge of all announcements and publicity for the League.
4. Fire Drill Committee — to plan and supervise all fire drills and to see that all fire officers function.
5. Hostess Committee — to act as hostesses to guests, visiting teams, entering students, etc.
6. Welfare Committee — to help members who are in trouble, sickness, or need.

Membership of Committees Appointed

Members of the League Council shall head committees and the other members shall be appointed from the group at large by the President of the Resident Women's League. Each committee shall function for one semester, but may be reappointed as the president wills.

Section V—Hall Officers

President

To preside at hall meetings and to be responsible for hall conditions.

1st Vice-President

To assist the president and be responsible for organizing fire drill, appointing assistants, assigning fire numbers, and making report of fire drills.

2nd Vice-President

Responsible for health conditions on hall and in charge of bathrooms.

3rd Vice-President

Responsible for study conditions, quiet and lights.

President of hall may appoint such other officers as are necessary for keeping living conditions on the hall at desirable standard.

Section VI—Amendments

Amendments to the by-laws may be made by a two-thirds vote of the total membership

of the League Council. Amendments to the constitution may be made with approval of hall organization.

OFFICERS

1941 - 1942

President	Ruth Wenerd
Vice-President	Dorothy Black
Secretary	Ruthe Carlson

ADVISORY BOARD

Seniors	Frances Crawford
	Ethel Hornick
	Dorothy Mulhollen
Juniors	Jean Good
	Ruth Pringle
Sophomore	Jean Dahlin
Sponsor	Florence B. Kimball

GENERAL INFORMATION FOR RESIDENT WOMEN

We believe in a life of loyalty, co-operation, and happiness. Through obedience we believe that we can secure liberty and safety for all. We believe in giving the best within ourselves so that we may uphold our own ideals and those of the college. The Resident Women's League has formulated the following guides for daily college life.

I. HOUSE RULES

A. Quiet Hours:

1. During all class hours.
2. Every evening except Saturday from 7:30 to 9:45 and after 10:00 until rising bell at 6:45.
3. Saturday after 11:00 P. M.

B. Lights:

1. Freshmen —
 - a. Each evening except Saturday until 10:30 P. M.
 - b. Saturday until 11:00.
 - c. Special permission may be received from freshman counselors to use lights once a week until 11:30.
2. Sophomores —
 - a. Each evening except Sunday until 11:00 P. M.
 - b. Sunday until 10:30.
 - c. By using light slips, special permission to study specific subjects may be used any night except Saturday and Sunday — on condition that the student has spent the evening in.
3. Juniors —
 - a. Two nights a week unrestricted lights in a room, to be reported to light proctor for recording.
 - b. Other evenings until 11:00 unless

lights slips for specific subjects are used.

4. Seniors —

Unrestricted lights.

C. Laundry and Shampoo Room:

1. For student use, a modern laundry and a shampoo room, equipped with basins, dressing tables, and electric dryers, are located in the basement of John Sutton Hall. Women are expected to do all personal laundry and shampooing in these rooms and not in bathrooms.

2. Hours (for use of above rooms)

Monday:10:00 a.m.—5:30 p.m.

Tuesday to Saturday: 8:00 a.m.—5:30 p.m.

Tuesday P. M.— 7:00 to 9:00 P. M.
for use of student teachers and those doing store service assignments, or those unable to use the room during the day.

3. The schedule for the distribution of bedding is as follows:

Tuesday morning

1st and 2nd floors John Sutton Hall

Wednesday morning

3rd floor John Sutton Hall

Wednesday morning.....Clark Hall

Thursday morning

4th floor John Sutton Hall

Saturday morning Cottages

On day designated, each girl should take one sheet and one pillow case to the laundry and receive fresh linen in return.

D. Care of Rooms:

1. Because of the importance of pleasant and orderly surroundings and the value in maintaining them, women are expected to keep rooms neat and clean and ready for inspection at all times. Damage to walls or furniture is settled with the Business Office. Tacks or nails in walls are not permitted.
2. Rooms are swept every two weeks, windows cleaned and beds sprayed at regular intervals. Notices will appear on hall bulletin board stating dates for these services, and rooms must be made ready if students wish room cleaned.

E. Telephones:

1. Calls are received or sent between the hours of 7:30 a.m. and 10:30 p.m. The student is informed of the call personally if she is in, but, if not in, a notice is placed on door of student's room.
2. In order to facilitate delivery of messages, girls are requested to always leave information as to their whereabouts by

signing out on halls and in register on first floor.

3. Pay phones are located on first floor of John Sutton Hall and may be used at any time.

F. Post Office:

1. A branch of the U. S. Post Office is located in the College Bookroom, from which out-going packages are sent, and stamps and government post cards can be purchased.
2. The school post office receives mail, notifies students of incoming calls and visitors, receives clothing returned from the cleaners, and local and C. O. D. packages.
3. Mail is sorted into hall sections and distributed by a member of that section who is responsible for its delivery.

G. Smoking:

On account of the fire hazard, smoking is not permitted in residence halls.

H. Guests:

1. Persons calling on students must be approved by the Dean of Women. In no case can visitors be allowed to interfere with college duties, and for this reason visits should be made during week-ends only.

2. House Guests:

- a. Any student entertaining a visitor in college buildings over night must register the visitor with the Dean of Women, have her approval, and notify the hall teacher that a guest is present. This privilege applies only to visitors of school age and should be used only on Saturday night when it is possible to use the bed of someone away for the week-end. Guests are under the same regulations as students, and the hostess is responsible for her guest. All meals are paid for at current transient rates.
 - b. Students may accompany mothers or near relatives to a hotel for meals or for the night if arrangements are made in advance with the Dean of Women.
- #### 3. Saturday Night Dance Guests:
- a. Secure guest card in the office of the Dean of Women and have guest approved before Saturday noon.
 - b. Present guest to hosts and hostesses at the dance.
 - c. The Saturday night dance is for students and out-of-town guests of boarding students. The privilege of inviting guests applies only to boarding students.

- d. The house is closed to guests at 10:30 p. m.

4. Sunday Visitors:

- a. On Sundays, mothers are permitted to visit students in rooms from 10:00 to 12:00 a. m. and from 2:00 to 5:00 p. m. At all other times guests are received in parlors on the first floor.
- 4. Men and boys are not permitted to visit women students' rooms or to be on dormitory floors at any time.
- 5. When students teaching off campus are planning to spend the night on campus, it is courteous to register in the office and it is expected that students do so, giving information as to where they are staying while in the dormitory.

I. Money and Valuables:

- 1. Sums of money should be deposited in school bank located in the Students' Central Treasury office on the first floor, north, of John Sutton Hall.
- 2. Keep room doors locked at all times when away from room.
- 3. In case of losses of any kind, report same to office immediately.

II. SOCIAL PRIVILEGES

A. Daily:

1. All Boarding Women

- a. Any woman student absenting herself from the dormitory for more than one hour during the day or after 7:30 p. m. is expected to sign out in the daily register in the telephone room and also on her hall, and to cancel her registration when she returns.
- b. When attending church on Sunday evening—sign out on hall register and daily register in telephone room.
- c. After evening campus activities students are expected to be in residence halls within fifteen minutes after close of activity.
- d. On nights of scheduled college activities students who do not attend are expected to maintain the regular routine as to study conditions, leaving and returning to the dormitory, etc.

2. Freshmen . . .

- a. May be off campus on Friday night each week until 9:55 p. m.

3. Sophomores . . .

- a. May be off campus any one evening each week until 9:55 p. m.

4. Juniors . . .

- a. May be off campus any two evenings each week until 9:55 p. m.
- b. Beginning second semester — two 11:00 o'clock permissions each month on Friday nights.

5. Seniors . . .

- a. May be off campus any one evening during the week until 10:00 o'clock.
- b. One 11:00 o'clock per week — on Friday night.

B. Week End:

1. All Boarding Women

- a. When leaving for week end students are expected to sign weekend register in the Office of Dean of Women and on their hall.
- b. Students are expected to return on Sunday evening by 9:00 p. m. If unavoidable circumstances prevent the student returning on time from week-ends and vacations, the Dean of Women should be notified to that effect as soon as possible.
- c. Success demands concentration of thought. This is prevented by frequent visits at home or elsewhere, and usually time thus spent greatly hinders the progress of the student.

The student must decide between sacrificing his school work and limiting the number of his visits. It is strongly advised that students do not go home oftener than once a month.

2. First and Second Year Students

- a. For convenience of parents, a form card may be filed with the Dean of Women permitting home visits at any time during the year. (Students may get card in office.) If such card is not on file, special permission must be sent for each visit home.
- b. Permissions for visits other than home necessitate a special permit from the parent to the Dean of Women, mailed directly to the office.

3. Third and Fourth Year Students

- a. Students may leave the campus week-ends by signing in office of Dean of Women and on their hall the name and address of person with whom they are visiting.

C. Automobile Riding:

1. Students may ride in cars daily until 6:00 o'clock if permission from parent or guardian is filed in office of Dean of women. Students using this privilege

should always be careful to sign out in daily register.

D. Overnight Permission:

1. No student may stay out of dormitory over night unless arrangement is made in office of Dean of Women, except for week-end as provided in section II-B.
2. Permission to stay in town over night is never given except in the case of staying with direct relatives and when arrangement is made with the Dean of Women's consent.
3. Students may spend the night in other rooms within the dormitory on Saturday night only if arrangement is made with sponsor of both halls.
4. Students are not permitted to leave for home after an evening college function of any kind.

E. Permission for Campus Organizations:

1. Blanket permissions are granted to groups for parties, trips, etc. Arrangements must be made before leaving and list of names of students participating must be filed in office of Dean of Women previous to leaving.

F. Vacation Regulations:

1. Students are expected to go directly

home at vacation recesses. Women students are under college jurisdiction from the time of arrival in Indiana in September until they leave in May, with the exception of Thanksgiving, Christmas, and spring vacations, and at all other times after they reach their homes.

2. All students are expected to return in time for classes after vacation, and if returning in evening are expected to arrive before 10:00 p. m. and check in on the hall bulletin board register immediately.
3. If at any time student cannot return as scheduled, she should notify the school by telephone at once.

G. Special Permissions:

1. Special requests not included in the above items will be taken care of as special permissions. Such requests must be made to the office of the Dean of Women during office hours. Scholarship, social record, and cooperative spirit will be considered in granting these permissions.

III. FIRE REGULATIONS

A. Fire Signals:

Fire drills are required twice each month.

All girls must participate, and greatest care must be taken to see that everyone follows orders implicitly.

SPEED is imperative — SILENCE is necessary

JOHN SUTTON HALL

1st bell is alarm — 2

2nd bell is floor — 1, 2, 3, 4

3rd bell is station — 1, 2, 3, 4, 5

Signal to re-enter building — 3

CLARK HALL

1st bell is alarm — 9

2nd bell is floor — 1, 2, 3

3rd bell is station — 1

Signal to re-enter building — 3

(Note: 5 rings designate basement in all buildings.)

B. Fire Drill Procedure:

1. Close all windows.
2. Turn on light.
3. Leave door open.
4. Take towel and coat.
5. Wear shoes instead of bedroom slippers.
6. Get into line — single file.
7. Leave by correct exit as quickly as possible.
8. No talking.

C. Appliances:

1. Any appliances for heat and fire, double sockets and extensions, are not permitted in the rooms. All extra connections must be installed and approved by the electrician.

IV. INFIRMARY HEALTH SERVICE

A. The Infirmary is located on fourth floor of John Sutton Hall. Registered nurses are on duty to look after the health of the students. Students are expected to consult the nurses before visiting a doctor or dentist in order that the infirmary will have a complete health record of the student.

B. If a student is ill and unable to attend classes, she is expected to report to the infirmary at once.

C. Infirmary hours, except in cases of emergency, are as follows:

1. Week days: 7:30 to 9:30 a.m.
2:00 to 3:00 p.m.
7:00 to 8:00 p.m.
2. Sunday: 9:30 to 10:30 a.m.
3. Visiting hours daily except Sunday:
4:00 to 5:00 p.m.

V. TYPEWRITERS AND RADIOS

A. Hours:

Typewriters and radios may be used weekdays between the hour of 7:00 a.m. and 10:00 p.m., and on Sunday from 9:00 a.m. to 10:00 p.m. Radios should be tuned down at all times so that they cannot be heard in hall or adjoining rooms.

B. Radios must be registered in the office of Dean of Women and be installed by the college electrician.

C. Radios will be removed from rooms of girls who do not cooperate in their use.

VI. DINING ROOM

A. General Information:

1. Regular tables will be assigned to students early each semester. Students may visit at other tables, beginning Friday evening through Saturday and Sunday.
2. Faculty and upper classmen occupy the heads of the tables. These places should be left vacant unless otherwise directed.
3. No service is begun until after the grace bell has rung. Correct procedure will be explained to new students.

4. Students are expected to change into appropriate clothes for dinner. Socks, saddle shoes, moccasins, informal campus clothes, bandannas, etc. should not be worn to dinner or on the dance floor.

B. Hours for Meals:

1. Week days: Breakfast—7:15 to 7:30
Lunch—12:10
Dinner—5:45
2. Sunday: Breakfast—8:00 to 8:30
Dinner—1:00
Tea—5:45

VII. SOCIAL ROOMS

A. A schedule for men students to be in the halls and social rooms of John Sutton Hall has been set up and is as follows:

1. For dancing:
 - a. Monday and Wednesday
6:30 to 7:15 p.m.
 - b. Saturday 6:30 to 10:00 p.m.
2. For calling (John Sutton and Clark Halls)
 - a. Daily (Except Sunday)
4:30 to 5:30 p.m.
 - b. Friday and Sunday
7:30 to 9:45 p.m.

3. At all other times, men are reminded that these are girls' dormitories; they are not expected to be around except as necessary, and are expected to leave at the times designated.
- B. On Friday night students are permitted to visit in the Women Commuters' Lounge and may play bridge and other games as desired. Student hosts and hostesses are in charge.
- C. Students who wish to play bridge may use the Women Commuters' Lounge in John Sutton Hall on Saturday evening. Faculty members and students are in attendance and will give instruction and help if desired.

VIII. MISCELLANEOUS INFORMATION

- A. Fraternity House Rules state that girls are permitted in the fraternity houses only for parties, and under chaperonage. Girls are expected to respect this regulation and not loiter in the vicinity of the houses.
- A. A check room adjoining Recreation Hall is available for use of guests and students while dancing and visiting. All coats, hats, rubbers, luggage, etc. should be left there.

- C. It has always been a custom at Indiana to dress formally for such occasions as Homecoming, Thanksgiving and Christmas Dinners.
- D. The second Saturday night in each month has been set up as a "dress up" night for dinner and dances. Long dinner dresses are appropriate.
- E. All girls are expected to attend hall meetings and no other activities are scheduled at that time.
- F. Cases of non-cooperation between other students and administration will be brought before the Advisory Board for action.
- G. Students are expected to attend the church of their choice on Sunday morning. In case of non-attendance, it is requested that they remain quietly in their own rooms during the church hours.
- H. Students who do not attend the Sunday evening Vesper Service are requested to be absolutely quiet during the service.
- I. On Sunday afternoon, John Sutton Hall parlors are reserved for the use of students in entertaining parents and out-of-town guests.

NON - RESIDENT WOMEN'S LEAGUE

Constitution

Preamble

In order to develop a closer social relationship among the women day students, the Non-Resident Women's League was organized and the following constitution and by-laws adopted.

Article I—Name

The name of this organization shall be the "Non-Resident Women's League of State Teachers College, Indiana, Pennsylvania."

Article II—Objectives

1. The regulation of conditions for the promotion of happiness, good health, and right living.
2. The development of individual and group responsibility in the management of women's affairs.

Article III—Membership

All women day students are ipso-facto members of the Non-Resident Women's League.

Article IV—Officers

The officers of the League shall be a president, vice-president, and secretary-treasurer, elected by popular vote. Election shall be held

in April preceding the opening of school in September. A majority vote shall be necessary for election to any office. Candidates for office shall be nominated by a nominating committee of four members appointed by the president of the organization. All nominees shall have the approval of the League adviser.

Qualifications—All candidates shall be students in good standing for regularity and punctuality, for conduct and scholarship, showing qualities of leadership, and standing for the best in college life. Scholarship records shall be at least a "C" average.

The president and vice-president shall be juniors during the year of service; the secretary-treasurer shall be a sophomore from the Business Education Department.

Article V—Meetings

The League shall hold a meeting once a month at a time and place decided upon by the Council and placed upon the Calendar.

Article VI—Amendments

This constitution is subject to amendment and ratification by a two-thirds vote of all members of the organization present at the meeting. Changes shall be recommended and posted one week in advance of the regular monthly meeting.

BY - LAWS

Article I—Officers and Committees

Duties of president: To preside at League Council meetings, to call and preside at regular and special meetings of the League, to appoint committees, and to represent non-resident women in the advisory board as provided in the constitution of the Resident Women's League.

Duties of the vice president: To preside at all meetings in the absence of the president, to head the fire drill committee.

Duties of the secretary-treasurer: To keep accurate minutes, to carry on any necessary correspondence, to post notices, to keep lists of all officers and committees, to collect any money.

Dean of Women: The Dean of Women shall be an ex-officio member of the League Council.

Committees

1. Social Committee—to be in charge of entertainment and recreation for women students, to plan for the reception of freshmen during freshmen week, to set up plans for hostesses during the year, and to supervise the monthly teas.

2. House Committee—to receive reports of conditions of the rooms and to see that they

are kept in good condition.

3. Publicity Committee—to be in charge of all announcements and publicity for the League.

4. Fire-Drill Committee—to plan and supervise all fire drills and to see that all fire officers function.

5. Welfare Committee—to help others in trouble, sickness, or need.

Article II—Dues

There shall be no dues collected. However, a small fee shall be collected for current expenses if the League Council deems it necessary. For outings or other social affairs, those attending will be assessed as in all organizations.

For the year 1941 - 1942, 10 cents will be assessed each member, such money to be used to defray expenses incurred by the group or to be used as the group decides.

Officers

1941 - 1942

President	Mary Woodle
Vice President	Jane Beck
Secretary-Treasurer	Gail Cline
Sponsor	Margaret I. Stitt

GENERAL INFORMATION

Accommodations

The following rooms have been provided on the ground floor of John Sutton Hall for the comfort and convenience of the women day students:

Main Lounge:

This room is very adequately furnished to promote social relationships among the students. Facilities for reading, and music afford opportunity for recreation. Racks for wraps and shelves for books are provided to keep the room neat.

Dining Room:

The Mexican Room makes a gay, pleasant place to eat lunch. Behind a partition at one end of the room are shelves for lunches. By using the doilies that are kept in the table drawers and removing them from the table after eating, the girls keep the room in order. At other times, this room provides a cheerful place for study.

Quiet Room:

Beds are provided with blankets for the girls' convenience. The Quiet Room adjoins the Mexican Room. The girls can rest here any time during school hours.

Rest Room:

This room is located opposite the main lounge and is beautifully decorated. Dressing tables are provided so that the girls may keep themselves attractive.

Responsibilities

It is the duty of each student to attend the monthly meetings.

At the post-office is a mail basket for communication. Each student is urged to look through it daily after 10:00 a.m. and 3:00 p.m. as important notices are placed in the basket.

Non-resident women are requested to cooperate with the House Committee in keeping the lounge, dining-room, and rest room neat and clean at all times, since guests often visit these new quarters.

Activities

Regular monthly teas are held in the main lounge. These are informal affairs where the girls drop in after class and meet their friends.

The Fall and Spring outings are held at the Lodge. The Non-Resident men join with the girls on these occasions.

Valuable Information

Cafeteria service is offered in the basement of Leonard Hall by the Department of Home

Economics. Five cents is the price for each item.

The hospitality committee arranges for "big sisters" to meet freshmen girls who are called "little sisters".

CUSTOMS FOR FRESHMEN WOMEN

1. Freshman women will observe customs on dates announced in bulletin.

2. Each freshman woman will buy the necessary identification in the college bookstore, to be worn for the full customs period.

3. A name sign, on a 3 x 5 card, with name printed in one-inch letters shall be worn on the right shoulder (front).

4. Freshmen shall carry "I" book at all times when name signs are worn.

5. Each woman will be required to know the following:

Alma Mater
Victory Song
Chant
Locomotive "I" Yell
Pep Yell

6. Freshmen will remain standing at the table until all teachers and upper-class women are seated; must enter and leave elevators last; and open and close doors for faculty and upper-class women.

7. When student is going off campus anytime during the day, only the designated identification is worn, and when out of town no identification is worn.

8. All customs (except 6) will be removed at 5 p.m. daily and from Saturday noon to Monday morning before breakfast.

9. At the end of the customs period each freshman will be given a test on her knowledge of school songs and cheers, table manners, and customs at Indiana. All freshman women will be required to take this test.

10. Freshmen are required to attend all meetings which are called by the administration and Customs Committee; also to attend assemblies, Vespers, and athletic events.

11. The Sophomore Customs Committee will consist of ten girls appointed by the Resident Women's League. They will enforce and direct freshman customs.

MEN'S STUDENT LEAGUE

This group made up of all the men students, co-operates with the administration in managing the affairs of men students.

Constitution Article I—Name

The name of this organization shall be "The Men's Student League of the State Teachers College, Indiana, Pennsylvania."

Article II—Purpose

The purpose of this organization shall be to co-operate with the administrative authorities of the college for the promotion of personal and group responsibility in the guidance and regulation of the affairs of all men students.

Article III—Membership

Members in this league shall consist of all men students registered in the college.

Article IV—Officers

1. The Executive Board of the league shall be composed of two representatives from each of the Senior, Junior, Sophomore, and Freshmen classes.

2. The members of the Executive Board must each be a regularly enrolled student carrying not less than sixteen (16) hours of work with at least a "C" average, and in good standing.

3. The Executive Board shall be elected at a meeting of the men students called during the first four weeks of the school year.

4. The term of office shall begin the first week of October of each year, and continue until the close of the second semester.

5. The Executive Board shall choose its own president.

6. The quorum requirement shall be six members.

7. The members of the Executive Board may choose another representative from the same class in case of a vacancy.

8. The Dean of Men shall be an ex-officio member of the Executive Board.

9. The President of the Executive Board shall be the Men's Student League representative to the Student Council.

Article V—Meetings

1. The League shall consider and act upon such matters as may be brought before it by the Dean of Men, or any other male student.

2. Meetings may be called by the officers of the league or by the Dean of Men.

Article VI—Duties and Powers

1. The function of the League is to deal with the problems of men students in a way which is consistent with the policies of responsible authority.

2. The league is authorized to make a complete list of Freshman customs.

3. The League is authorized to appoint five members of the Sophomore class who will act as a tribunal in the enforcement of the Freshmen customs.

Sponsor W. M. Whitmyre

NON-RESIDENT MEN'S STUDENT LEAGUE

This club promotes social contacts and activities of non-resident students.

Constitution

Article I—Name

The name of this organization shall be the "Non-Resident Men's Student League of State Teachers College, Indiana, Pennsylvania."

Article II—Purpose

1. To secure more campus recognition and to promote the general welfare of the non-resident men students.
2. To regulate conditions in the Men's Commuters' Room.
3. To stimulate good fellowship.

Article III—Membership

All non-resident men students registered in the college shall be automatically members of the league.

Article IV—Commuters' Room

1. The Commuters' Room shall be an exclusive function of the non-resident students.

2. Any other students who come into the room shall consider themselves as guests and should act accordingly.

3. The room shall be used primarily as a lunch room and lounge.

Article V—Officers

1. The Executive Board shall consist of a President, Vice-President, Secretary-Treasurer, Sergeant-at-Arms, and the Dean of Men.
2. The officers shall be elected by the members at a meeting which shall be called during the first five (5) weeks of the school term.
3. The term of office shall continue from election until the next election date in the following year.
4. The President of the Executive Board shall be the Non-Resident Men's Student League's Representative to the Student Council upon recognition by that body.

The Sergeant-at-Arms shall appoint three (3) men in each semester to aid him.

Article VI—Duties and Powers of the Officers

1. The Sergeant-at-Arms shall have the power to reprimand any person at any time who fails to conduct himself properly in the

Commuters' Room; and this officer shall be supported in his actions by the Executive Board.

2. The President shall call meetings upon the petition of ten members of the organization or upon the appearance of matters pertaining to the League.

3. The Executive Board shall have the power to make arrangements with the organization of Non-Resident Women for any co-educational activities.

4. Dues may be collected from members only for functional activities.

Article VII—Quorum

Twenty-five (25) members shall constitute a quorum.

Article VIII—Amendment

The Constitution may be amended upon a three-fourths vote of the members at a regular meeting.

Officers

1941 - 1942

President James Dick

Sponsor W. M. Whitmyre

DRESS FOR MEN

Dress and manners are very important factors in one's college life. Be well groomed at all times and for all occasions.

The following principles of dress have long been recognized as customary on the campus.

1. A coat and tie must be worn to dinner and dances.
2. Sweaters may be worn to classes and to the dining room at lunch time.
3. Tuxedos should be worn for all formal dances.

MEN'S LOUNGE SMOKING REGULATIONS

Men students may smoke on the campus or in the men's lounge room.

Smoking is not permitted in buildings, halls, lavatories, or on porches.

AUTOMOBILE REGULATIONS — MEN

Men boarding students having automobiles at the college must report and register same at the office of the Dean of Men.

CUSTOMS FOR FRESHMEN MEN

1. Freshmen men must begin customs on the day dinks are offered for sale.

2. Freshmen must wear dinks, red ribbon ties, and black socks at all times except after 12 noon on Saturday through Monday morning.

3. Freshmen shall keep coats completely buttoned when in public.

4. Freshmen must not use tobacco in any form when in public.

5. Every Freshman shall wear, during the first week of customs, a card upon which is legibly printed his name in large black letters, not less than one inch high.

6. There shall be no dating on or off the campus.

7. Freshmen must attend all assemblies and Vesper services.

8. Freshmen must attend all athletic contests at home.

9. Freshmen shall learn the VICTORY SONG and the ALMA MATER.

10. Freshmen shall always be neatly dressed and have shoes shined.

11. No upper-classman has the right to excuse any freshman from customs.

12. All upper-classmen are to be respected and obeyed.

13. Freshmen **must** dance on Monday, Wednesday, and Saturday nights.

14. Freshmen shall be the last ones to enter the dining hall.

15. Freshmen must not cut across campus grove in going from one building to another.

16. The Sophomore Tribunal consists of five (5) men appointed by the Men's Student League. This Tribunal is a Sophomore organization only and shall see that Freshmen Customs are enforced.



DANCING IN RECREATION HALL

Activities — Organizations

1941

1942

THE COLLEGE LODGE

The Lodge plays an important part in the instructional and recreational life of the college. Owned by students and faculty, this 100 acres of wooded hillside, with its rustic lodge and three shelter houses, not only offers opportunity for study by nature and conservation classes, but is in demand for picnics, meetings, and winter sports.

Organizations are invited to use these facilities. All arrangements for the use of the Lodge should be made through the office of the Dean of Women.

Groups Eligible to Use Property

1. Any student group (social, educational, etc.) with a faculty sponsor.
2. Alumni — any organized unit or group.
3. Faculty — as an organized group, as a group with faculty predominating, and as a family group.
4. Students with their families may be permitted to use outside shelters on occasion, if arrangements have been made and permit granted.

Conditions for Use of Property

1. Permit card must be presented to the caretaker whenever shelters or lodge buildings are used.
2. Reservations to be made in advance with office of the Dean of Women so that care-

taker can be notified of any necessary preparation.

3. Permit card to be obtained in office of Dean of Women.

4. Caretaker is held responsible for enforcing regulations for use of lodge property, and those using property are responsible to him for its use.

5. Anyone on the property at any time must be ready to identify themselves at the request of the caretaker ("I" card).

6. In order to discourage outsiders, a chain will be placed across the road during the night unless there is a reservation for evening.

7. A bulletin board is placed on the porch on which regulations, reservations, and notices may be posted.

Board of Directors

LeRoy A. King.....President of the College
 Florence B. Kimball.....Dean of Women
 John E. Davis

Director of Laboratory School
 Donald Cassatt.....President of Senior Class
 Marjorie Hill.....President of Junior Class

FRATERNITY RUSH REGULATIONS

By

Inter-Fraternity Council

The articles of the Constitution of the Inter-Fraternity Council which govern Fraternity rushing are printed below.

Article V—Fraternity Membership

(a) Every student must have a "C" average on the full number of hours required for the year and semester in which he is listed and must be carrying the normal load for his department or curriculum (or the number of hours approved by the Dean of Instruction in exceptional cases) in order to be eligible for pledging or initiation. Irregular students must have a "C" average for all work taken at Indiana. An exception to the cumulative requirements may be made with approval of the Dean of Instruction in case the student has transferred from one department to another.

Article VI—Time for Pledging

(a) There shall be two regular pledging periods each year, beginning on November 1st. and April 1st. respectively. Freshmen students who have transferred from other schools shall not be eligible for pledging until the first regular pledging period after the successful completion of one semester's scholastic work on the campus.

Article VIII—Rushing

(a) There shall not be more than two regular rush parties during any one semester by each fraternity, and there shall be no regular rush party the first semester.

(b) A regular rush party is a fraternity social function to which every guest must have a written invitation. It must be planned in fraternity meetings beforehand, and it must be put on the calendar in the office of the Dean of Women at least three weeks before the date for which it is scheduled. The money must come directly or indirectly from the treasury of the fraternity. The period during which regular rush parties may be held shall expire one week preceding the hour at which the freshmen are to meet with the registrar.

(c) For a period of forty-eight (48) hours preceding the hour at which the freshmen are to meet with the registrar, there is to be a period of quier during which no fraternity member is to communicate with a freshman.

INTER-FRATERNITY COUNCIL

The Interfraternity Council consists of ten men: the Dean of Men who acts as chairman; the presidents and sponsors of Phi Sigma Pi, Phi Alpha Zeta, and Sigma Tau Gamma; and one representative from each.

Fraternity Members

Chairman W. M. Whitmyre

Phi Alpha Zeta

Sponsor Tobias O. Chew
 President Milton Carter
 Representative James Purdie

Phi Sigma Pi

Sponsor Lawrence C. Davis
 President Wayne Scott
 Representative Elwood Sheeder

Sigma Tau Gamma

Sponsor Ralph S. Rowland
 President Orest A. Zorena
 Representative Anthony S. Perfilio

STUDENT PUBLICATIONS

THE INDIANA PENN

THE INDIANA PENN represents the daily activities of the college scene. In it can be found the weekly recording of the past, present and future events on the campus. THE PENN is the official college publication.

THE PENN offers an opportunity to every student for participation in a worthwhile out-of-class activity. The staff is selected on the basis of experience, executive ability, interest and willingness to devote untiring efforts toward making the paper successful, and an

average or better than average scholastic standing.

An effort is made to start freshmen who show promise so they might rise to higher positions as they gain in experience and amount of service.

THE PENN is issued every Saturday morning and is free to every student enrolled in the college. It is your college paper—read it.

Editor-in-Chief George Curley

Assistant Editor James Smith

THE OAK

THE OAK is the college annual and contains a written and pictorial account of the activities of the year and features pictures of the Senior Class.

Positions on the staff of THE OAK are obtained by appointment. Students of the college are urged to participate in the publication of this unique annual. THE OAK is cherished by every student at Indiana.

THE OAK is free to every student who has made the payment of the activity fee for two semesters. THE OAK is distributed during the month of May of each year.

Editor-in-Chief Richard Pearson

Business Manager John Olshock

THE SCROLL

This publication is the work of the American College Quill Club and is published once every year. THE SCROLL is an outstanding literary publication and may be purchased from any of the Club members at a nominal price. Students having creative literary talent are urged to investigate the opportunities and qualifications necessary for the publication of their material in THE SCROLL.

TEACHERS COLLEGE BULLETIN

THE TEACHERS COLLEGE BULLETIN is published four times a year. It is issued twice as a college catalogue and twice as an educational bulletin.

THE STUDENT HANDBOOK

This Handbook is free to every student enrolled in the college. READ and STUDY your Handbook most carefully. Orient yourself with your new environment. This Handbook is filled with information that is vital to every student attending the college.

CARRY it with you and when in need of information, CONSULT it.

THE DAILY BULLETIN

This is issued each week-day by the college. The bulletin contains valuable information for each day and is distributed to every classroom each morning. Faculty members

are expected to read it to all classes. Watch for it and insist upon hearing it—it is most important.

ORGANIZATIONS

1941 - 1942

Alpha Omega

Alpha Omega is an honorary geography fraternity whose purpose is to further professional interests and to furnish contacts in the field.

To be eligible students must have at least 9 hours of geography with a "B" average. In addition to the scholarship requirement, applicants must submit and have accepted a paper or project on some important phase of geography work.

Officers

President	Boblyn Quail
Vice-President	John Bober
Secretary-Treasurer	Elsie Hedfors
Corres. Secy.	Naomi Vanderpool
Reporter	Evelyn Streams
Sponsor	Norah E. Zink

Alpha Phi Gamma

Alpha Phi Gamma is an honorary, co-edu-

cational, journalistic fraternity of national standing. Its purpose is to serve directly or indirectly the publications committee and all publications at the college. The group investigates make-up and typography of newspapers, books, and magazines; the printing trade and publishing business, freedom of the press, propaganda, art as applied to printing, and the problems relating to sponsorship of high school journalism.

Students with a total B average and having no D's or F's the semester preceding, are eligible if they have served for one semester in a major office or for two semesters of general work on THE PENN or THE OAK. Members have the same scholastic qualifications as those of Kappa Delta Pi

Officers

President	Walter Hill
Vice-President	Craig Swauger
Secretary	Orest Zorena
Treasurer	Thomas Brumbaugh
Bailiff	Catherine Lentz
Sponsor	Ruth Knowles

Alpha Sigma Alpha

The purposes of Alpha Sigma Alpha are
(1) to establish pleasant social relations for

its membership, and (2) to provide for the intellectual, social, and spiritual development of its members.

Women students with a C average or better are eligible, by invitation.

Officers

President	Rhoda Hunter
Vice-President	Eleanor Shaffer
Secretary	Bette Jane Lyon
Treasurer	Martha Brewer
Chaplain	Marie Beard
Registrar	Janet Waring
Editor	Lois Walton
Panhellenic Repres.	Dorothy Howe
	Dorothy Black
Sponsor	Ethel A. Belden

Alpha Sigma Tau

The purpose of Alpha Sigma Tau is to develop the character of each member in an effort to aim at true womanliness, to help each girl to enjoy the cultural advantages of life, to develop in each member the social graces, to maintain high standards of scholarship, and to promote self-sacrificing friendship one for another.

In order to be eligible for membership a girl must have a good social record and at least a C average in all work taken at Indiana.

Officers

President	Ruth Englehart
Vice-President	Ruth Wenerd
Treasurer	Eileen Brooks
Recording Secy.	Jean O'Hara
Corres. Secy.	Peggy McCafferty
Editor	Emmie Lou Wetzel
Chaplain	Ada Betz
	Georgia Rea
Pledge Mother	Eleanor Boon
Sponsor	Alma M. Gasslander

American College Quill Club

The Quill Club is a national student organization whose members are interested in creative writing. It is neither social nor honorary in its primary purpose, but is devoted to the encouragement of good original writing among college students. Among the fifteen groups, called Runes, Ger-Rune at I. S. T. C. is the only one installed in a teachers' college.

Membership is drawn from all departments and any student or faculty member may submit under a pen name an original manuscript for the consideration of the membership committee. If accepted, the candidate then presents to the group in person a second qualifying manuscript. Tryouts are conducted each semester.

Quill meets twice a month. It publishes annually SCROLL, a magazine containing the best of the year's literary output.

Officers

Chancellor	Thomas Brumbaugh
Vice-Chancellors	Helen F. Egleston
	Louise A. Macdonald
Scribe	Gracella Shaull
Keeper of Parchments	Mildred Hart
Warden of Purse	Ruth Pringle
Sponsor	Helen F. Egleston

Art Club

The Art Club was founded in 1925 for the purpose of stimulating and directing interest in art.

All students and faculty of the art department are eligible for full membership, and other students may be associate members.

A picnic and masquerade in the fall and a banquet in the spring are the annual social events. A two-hour period on Tuesday evenings is devoted to crafts, painting, or other art performance, both associate and full members participating.

Officers

President	Walter J. Kipp
Vice-President	Mary Elena Wilgus
Secretary	George E. Zimmerman
Treasurer	Alice Ruth Cunningham
Sponsor	Alma M. Gasslander

Biology Club

The purpose of the Biology Club is to stimulate professional interest through association with each other in special problems. It provides an opportunity for individual activity on special projects.

Selected upper classmen of special ability are eligible for membership.

At present there is no formal organization of officers.

Sponsors Dwight E. Sollberger
Thomas Smyth

Camera Club

The Camera Club endeavors to allow persons to satisfy their desires relative to the learning of how to make good pictures. This includes the study of the camera, how to take well balanced, pleasing pictures, developing films, and the making of prints and enlargements.

The work is primarily that of an individual nature rather than that of the group.

Any person in the college is eligible to membership in the organization and may become a member by enrolling and paying a very small membership fee.

Sponsor Wilber Emmert

College Choir

This organization is devoted to the study of choral music and a demonstration of methods and procedures for the attainment of superior choral singing. Essentials of singing are stressed including posture, breath control, elimination of tension, proper resonance, distinct and natural pronunciation, phrasing, style, and interpretation. Required for Juniors and Seniors in the Music curriculum. Elective and selective for Sophomores and Freshmen in the Music Curriculum, and to students in the rest of the college.

Sponsor Mary H. Muldowney

College Marching Band

This organization is open to all men in the college who can perform the music. It is uniformed in the colors of the school. Appearances are made at all local college football games, community parades, and at least one trip is made away with the football team. Members of the band study marching tactics, and trick field maneuvers.

Sponsor Irving Cheyette

College Pilots' Club

This club was organized by students who have taken the course in Civil Pilot Training sponsored by the Federal Government.

The College Pilots' Club has as its objective the fostering of aeronautics.

CLASS OFFICERS**1941 - 1942****Senior Class**

President	Donald Cassett
Vice-President	Eugene DeMatt
Secretary	Henry Weisen
Treasurer	Elmer Nickolas
Sponsor	Leroy H. Schnell

Junior Class

President	Marjorie Hill
Vice-President	Russell Santangelo
Secretary	Jeanette Barnhart
Treasurer	Raymond McNaughton
Assistant Treasurer	Vera Baumgardner
Sponsor	Orval Kipp

Sophomore Class

President	Arthur Price
Vice-President	Donald Corey
Secretary	Eloise Englehart
Treasurer	William Cutler
Assistant Treasurer	Thomas Anon
Sponsor	Inez E. Buchanan

Freshman Class**Officers to be elected this semester**

President	
Vice-President	
Secretary	
Treasurer	
Assistant Treasurer	
Sponsor	Lyle O. Willhite

Membership is limited to those who have graduated from the course in aviation and who have as a result received their private pilots' license. Meetings are held monthly.

Officers

President	Edwin Nelmes
Vice-President	William Wine
Secretary	Ray Jones
Treasurer	James Quinn

College Symphonic Band

This organization is open to all students, both men and women, who can perform proficiently on their instruments. Appearances are made frequently both in the college and community, as well as for radio broadcasts. The literature studied includes both transcriptions for symphonic band and works written especially for the band. This organization also serves as a laboratory group to survey available literature for Class A, B, and C as published for senior high school bands.

Sponsor Irving Cheyette

College Symphony Orchestra

The Symphony Orchestra performs a repertoire of classic and romantic compositions as well as the works of contemporary composers. The orchestra contributes to the cultural life of the college and community by public recitals and radio broad-

casts. Membership is open to any student in the college who can perform the music. Students with orchestral experience are encouraged to bring their instruments and apply for membership in this organization. The orchestra also serves as a laboratory for surveying materials for senior high school and college performance.

Director Lawrence Stitt

Debate Club

The Debate Club is a recent organization at Indiana. Its purpose is three-fold: to give an opportunity to study the principles underlying effective debating, to give practice in organizing and presenting materials under various styles of debating, and to encourage sound criticism. The benefits to be derived are many and offer unequalled opportunity for training in accurate thinking and effective expression. Participation is in both non-decision contests and in tournaments. The organization is open to all students of the college.

Officers

Debate Manager Robert Beezer
Sponsor Reba N. Perkins

Delta Sigma Epsilon

Delta Sigma Epsilon is a national educational sorority. A group of women, each of whom is dedicated to the highest ideals of friendship,

character formation, social and cultural progress, make up the sorority.

Women maintaining a C average or better are eligible to join. Membership by invitation.

Officers

President Jane Lewis
Vice-President Dorothy Braffette
Recording Secretary Alverda Carlson
Treasurer Margaret Dare
Corresponding Secretary Dorothy Dowd
Chaplain Louise Lindberg
Sergeant-at-Arms Barbara Watson
Historian Barbara Watson
Keeper of the Archives Dorothy Braffette
Panhellenic President Louise Lindberg
Panhellenic Representatives Jane Lewis
Alverda Carlson
Sponsor Lillian McLean

Elementary Club

All students of the Elementary Division automatically become members of this club. The Kindergarten, Primary, and Intermediate Departments are in the Elementary Division.

The objectives of this club are the cultural, social, and professional advancement of its members.

The club meets regularly on the second Tuesday of each month.

Officers

President	Charity Caulkett
Vice-President	Marthagene Allen
Secretary	Sarah Hawkins
Treasurer	Lois Vogel
Student Council	Phyllis Hutchinson
	Donald Gibson
	Vivian Sinclair
Sponsors	Jane McGrath
	Lillian McLean

Gamma Rho Tau

The purpose of Gamma Rho Tau is to promote scholarship and character, to advance the professional attitude of the prospective commercial teacher in the classroom, and to forward the democratic ideal in education.

Gamma Rho Tau is a national honorary and professional fraternity for men. Only teachers in business education and those students who have completed one-half of a four-year course in the field are eligible for membership, which is achieved only by invitation. Membership implies a high scholastic standing such as 1.4 quality points per semester hour at the close of the fourth semester, in addition to distinct ability as a future teacher.

Officers

(Election first Semester)

President	
Vice-President	
Secretary	
Treasurer	
Sponsor	Ralph Rowland

Home Economics Club

The purpose of this club is to establish a means of uniting the department into a closer social relationship; to train girls for leadership and parliamentary practice; to develop responsibility, dependability, and co-operation. The club co-operates with the State Home Economics Association.

All students in the Home Economics Department are eligible to membership.

Officers

President	Patricia Fausold
Vice-President	Fred Stokes
Secretary	Helen Shaffer
Treasurer	Bertha McDowell
Assistant-Treasurer	Billie Bright
Sponsor	Rachel Moss
Financial Advisor	A. Pauline Sanders

**Intercollegiate Conference
on Government**

The purpose of this Conference is to study state and national problems and discuss them freely.

The organization is open to the students of the college who show an interest and have a C average.

Meetings are held monthly during the first semester after which weekly meetings are inaugurated and held until the last week in

April when the Conference meets at Harrisburg. The 1942 Conference will meet as a Model Constitutional Convention for the Commonwealth of Pennsylvania.

The final delegation numbers approximately 24 members.

President Frank Buchanan
Sponsor C. M. Johnson

International Relations Club

The purpose of this club is (1) to assist students to gain an understanding of world affairs; (2) to provide an opportunity for student participation in the discussion of world affairs; (3) to provide leaders for the Open Forum.

Members are selected by the club. This selection is based upon manifested interest in international affairs, scholarship in the field of Social Studies and qualities of leadership.

Officers

President William Reinish
Vice-President Eugene Trimarchi
Secretary Jane Rairraigh
Treasurer Arthur Price
Sponsor Ethel Belden

Junior Chamber Of Commerce

This organization offers frequent opportunities for public discussion on current popular topics applicable to commercial work. It



fosters the formation of commercial clubs in the high schools, wherever assistance is desired, and helps to promote the work of such organizations. The officers are elected from the members of the student body in the Department of Business Education.

All Business Education students are eligible for membership.

Officers

President	Robert McGrew
Vice-President	William Cutler
Recording Secretary	Helen Shea
Corresponding Secretaries ..	Theda Crissman
	James Trainer
Treasurer	Jack Ritter
Assistant Treasurer	Donald Corey
Sponsor	E. J. McLuckie

Junior Choir

This is a required choral organization for Freshmen and Sophomores in the Music Department of the College.

This organization is also open to all students in all departments of the college who enjoy singing as an extra-curricular activity. The Junior Choir is the Vesper Choir of the College, providing the sacred music for the Sunday Vesper Services.

Sponsor James H. Remley

Kappa Delta Pi

The purpose of Kappa Delta Pi is to foster high standards of preparation for teaching and to invite into the organization those who have attained excellence of scholarship and achievement in education.

In this college the upper ten per cent of the junior and senior classes of each department are eligible for membership. A student must have slightly better than a B average and desirable personal qualifications to be considered by the committee on membership, which is composed of the Dean of Instruction, the Head of the Department of Education, the sponsor of Kappa Delta Pi and four members of the organization.

Officers

President	Jane Beacom
Vice-President	Jess Hartley
Corresponding Secretary	Jane Rairigh
Recording Secretary	Kathleen Danner
Treasurer	Richard Pearson
Assistant Treasurer	Dorothy Karabinus
Historian	Mary Wilgus
Sponsor	Joy Mahachek

Kappa Omicron Phi

Kappa Omicron Phi is a national honorary Home Economics sorority. This sorority was established to further the best interests of Home Economics by developing women

with higher ideals of sane living; with broader social, higher intellectual, and cultural attainments; with a definite responsibility for solving social and economic problems; with a deeper appreciation for the sanctity of the home; and with a scientific attitude toward home-making.

Members must have better than a "B" average in Home Economics. No member can have a "D" or "F" recorded in any subject.

Officers

President	Rebecca Allison
Vice-President	Alice Whittaker
Second Vice-President	Virginia Wall
Corresponding Secretary ..	Rosanna Cowan
Recording Secretary	Helen Lightcap
Treasurer	Emmy Lou Wetzel
Keeper of Archives	Olga Kolcum
Sponsor	Mrs. Thelma Lappen

Leonard Literary Society

The purpose of this society is to provide opportunities for literary and dramatic experience. The society also aims to acquaint its members with professional talent in literary and dramatic art.

All students and faculty members are eligible for membership.

Officers

President	William Siebert
Vice-President	Patty Shaw
Secretary	Helen Solanik
Treasurer	Ruth Hepner
Financial Secretary	Jane Yeager
Sponsor	Edna Lee Sprowls

Men's Glee Club

This organization aims to afford personal enjoyment to its members through participation in ensemble singing, and contributes to college life by appearing publicly on the campus at concerts and assemblies. Membership is required of all men in the music department and is open to all other men in the college who enjoy singing.

Sponsor James H. Remley

Music Educators Club

All students of the Music Education Department are automatically members of the Music Educators' Club. This organization sponsors trips to Johnstown and Pittsburgh to hear the major symphony orchestras and world renowned concert artists and ensembles. Each class within the club sponsors student recital teas periodically. Such activities provide opportunities for a desirable type of social intercourse and educate students in accepting responsibility and acquiring social

graces so essential to the music educator. Student representatives selected by the Club sit in as a part of the Music Education Council of faculty and students, which determines the policies of the Department within the framework of the College.

Officers

President	Charles Coulter
Secretary-Treasurer	Ruth Landis
Sponsor	Irving Cheyette

Newman Club

The stimulation of greater Catholic activity on the part of its members is the primary purpose of the Newman Club. As a member of the National Federation, the club receives many worth-while ideas from the various colleges throughout the United States.

Besides its various smaller activities, the club sponsors these main features during the year: Spring and Fall outings, Dinner-dances, and the Communion Breakfast.

All members of the Catholic faith are eligible for membership.

Officers

President	Dolores Quinn
Vice-President	Leonard Litzinger
Secretary	Emily Puskar
Treasurer	John Balog
Assistant Treasurer	Mary Jane Bifano
Historian	Dorothy Dibrasky
Sponsor	Estella M. Slaven

Open Forum

The purpose of the Open Forum is to provide an opportunity for all students who are interested in national and international affairs to discuss current problems of vital significance.

This organization is open to all students.

Sponsor Ethel Belden

Panhellenic Association (Sororities)

The Panhellenic Association serves as a clearing house for inter-sorority problems. It has charge of inter-sorority activities such as the Panhellenic dance. It publishes, subject to the approval of the Dean of Women, a book containing sorority regulations for the year.

Its membership consists of representatives selected by the various sororities on the campus. There are seven national professional sororities represented.

Officers

President	Louise Lindberg
Treasurer	Eileen Kramer
Corresponding Secretary	Thelma Jones
Recording Secretary	Charity Caulkett
Chairman	Florence B. Kimball

Representatives

Alpha Sigma Alpha

President	Rhoda Hunter
Representative	Dorothy Howe
Representative	Dorothy Black

Alpha Sigma Tau

President	Ruth Englehart
Representative	Eileen Cramer
Representative	Virginia Roberts

Delta Sigma Epsilon

President	Jane Lewis
Representative	Alverda Carlson
Representative	Louise Lindberg

Pi Delta Theta

President	Betty Routh
Representative	Billy Bright
Representative	Dorothy Mulhollen

Pi Kappa Sigma

President	Frances Harshberger
Representative	Charity Caulkett
Representative	Phyllis Pearson

Sigma Sigma Sigma

President	Martha Hindman
Representative	Helen Ely
Representative	Patricia Graham

Theta Sigma Upsilon

President	Katherine Lentz
Representative	Betty Kane
Representative	Thelma Jones

Phi Alpha Zeta

Phi Alpha Zeta is a national educational, social, and athletic fraternity having for its objectives home, social, and personality training. Good fellowship, fraternalism, character, and scholastic endeavor are fostered by this group of men.

Men students, by invitation, with a C average or better, are eligible.

Officers

President	Milton J. Carter
Vice-President	Francis Patt
Treasurer	Robert Davis
Assistant Treasurer	Hugh Robertson
Corresponding Secretary	Ray Jones
Recording Secretary	Lee Roup
Sergeant-at-Arms	John Hrezo
Chaplain	Winston Ritter
Sponsor	Tobias O. Chew

Phi Sigma Pi

Phi Sigma Pi is a national professional educational fraternity fostering the ideals of fellowship, scholarship, and training. The national order of Phi Sigma Pi now numbers more than 5,500 men in all walks of life.

To be eligible, a student in the sophomore, junior, or senior classification must have 19 quality points per 16 hours. Membership is by invitation.

Officers

President	Wayne Scott
Recording Sec.	Raymond McNaughton
Corresponding Secretary	Jack Ritter
Treasurer	John Olshock
Asst. Treasurer	Richard McAfoose
Historian	Allan Reed
Librarian	John Freed
Sergeant-at-Arms	Markle DeMezza
Chaplain	James Hess
Parliamentarian	John Bober
Sponsor	Lawrence C. Davis

Pi Delta Theta

Pi Delta Theta is a national educational sorority. It was established to foster close friendships between its members and to stimulate social, intellectual, and spiritual life. Membership is by invitation.

Officers

President	Betty Routh
First Vice-President	Elsie Hedfors
Second Vice-President	Rose Woods
Secretary	Helen Salonik
Treasurer	Lillian Durbin
Chaplain	Dorothy Mulhollen
Registrar	Edna Smider
Panhellenic Representative	Billie Bright
Panhellenic Alternate ..	Dorothy Mulhollen
Editor	Martha Jane Nesbitt
Sponsors	Reba N. Perkins
	Lena Ellenberger

Pi Kappa Sigma

Pi Kappa Sigma is a professional education sorority and the motto is "In Fun and in Earnest." This organization has for its ideal the highest type of professionalism in young teachers.

Officers

President	Frances Harshberger
Vice-President	Phyllis Pearson
Secretary	Dorothy Ross
Treasurer	Lucille Russell
Panhellenic Representatives	

Frances Harshberger

Charity Caulkett

Sponsor

Mary L. Hart

Pi Omega Pi

The Kappa Chapter of Pi Omega Pi, a national honorary fraternity, was established at Indiana in 1929. Its purpose is to encourage, promote, extend, and create interest and scholarship in commerce; to aid in civic betterment in colleges; to encourage and foster high ethical standards in business and professional life; to teach the ideal of service as the basis of all worthy enterprise.

Members of Pi Omega Pi are students who have fifteen semester hours in commerce and education and maintain high standing in com-

mercial studies and average standing in other college studies.

At the end of the sophomore year or at any time thereafter when the qualifications are attained, students may be pledged.

Officers

President	Ethel Hornick
Vice-President	Jean Whitney
Secretary	Elizabeth Corcoran
Treasurer	Betty Brandon
Sponsor	A. E. Drumheller

Proms

A. In addition to the Saturday night dances there are four class proms. The hours for these dances are 7:30 to 11:30 p.m. It is understood that boarding girls do not go home or out of the house after the dances. Arrangements for any guests staying in the house must be made beforehand.

B. The Inter-Fraternity dance is held on the eve of the Thanksgiving vacation and the Panhellenic dance at the beginning of the Christmas vacation. These dances are under the direction of the sorority and fraternity sponsors and all arrangements as to hours, going home, etc. are made by them.

Edwin Arlington Robinson Club

The Edwin Arlington Robinson Club holds Open House from 3:00 to 5:30 on the fourth

Friday of every month. This is the only club in college with no dues, no formal program, no regulations. It is primarily a reading club, and the members spend an hour or so with new books, beautifully illustrated or rare editions, and old favorites. The club has presented its poetry books (over 100) to the college library, where they are housed as the Edwin Arlington Robinson collection.

Sponsors	Carrie Belle Norton.. Ruth Knowles
----------------	---------------------------------------

Secondary Education Club

The purpose of the Secondary Education Club is to weld the department into a more unified organization. It encourages this through a few professional meetings and two social events each year.

Any student registered in the Secondary Education Department is eligible to membership upon payment of the annual dues.

Officers

President	John Bober
Vice-President	Helen Jacobson
Secretary	Helen Uhler
Treasurer	Andrew Paul
Sponsor	Ralph Heiges

Sigma Sigma Sigma

The purpose of the organization is to further professional and social group co-operation; to give experience in original and independent action; to develop in the members a strong womanly character, and to impress them with the high standards of the teaching profession.

Officers

President	Martha Hindman
Vice-President	Barbara Ritenbary
Secretary	Mildred Weston
Corresponding Secretary	Helen Ely
Treasurer	Betty Gilmore
Assistant Treasurer	Eleanor Burns
Keeper of Grades	Jeanette Barnhart
Panhellenic Representatives	
Patricia Graham, Martha Hindman	
Sponsor	Edna Lee Sprowls

Sigma Tau Gamma

Sigma Tau Gamma is a national, social, and professional fraternity for men in teacher's colleges.

Sigma Tau Gamma fosters a social and professional brotherhood among its members. The fraternity offers many rewards for scholarship.

To be eligible the student must have at least a C average plus qualities that will mark him as an excellent teacher.

Officers

President	Orest A. Zorena
Vice-President	Jess Hartley
Treasurer	Anthony Perfilio
Recording Secretary	Frank Alcamo

Corresponding Secretary	John Metzler
Sergeant-at-Arms	Jess Badger
House Manager	Tulio Pignani
Chaplain	Robert Swanson
Sponsor	Ralph S. Rowland

Theta Sigma Upsilon

The dominant thought in Theta Sigma Upsilon is growth — growth of the kind that comes from right living and clear thinking and which makes for a sane and wholesome outlook on life.

Members are elected by the group.

Officers

President	Katherine Lentz
Vice-President	Martha Ward
Treasurer	Margaret King
Recording Secretary	Jane Yeager
Corresponding Secretary	Ann Davis
Editor	Barbara Lehman
Sergeant-at-Arms	Myrtis Karle
Panhellenic Representatives	
Thelma Jones, Betty Kane	
Sponsor	Irma H. Marlin

Travel Club

The Travel Club functions solely for its annual spring trip. It is for those persons interested in taking a three or four-day trip to some place geographically important.

Anyone in the geography department and any others going on the trip are considered members of the club.

Officers

President	Mary Lois Shaffer
-----------------	-------------------

Secretary-Treasurer John Hargraves
 Sponsor Lawrence C. Davis

Women's Choral Club

A girls organization consisting of the women who are members of the Junior Choir and the College Choir plus any other women on the campus who enjoy singing. This club will study literature for women's voices and will assist in the presentation of sacred and secular concerts in the school and community.

Sponsor Mary Lowman

Y. M. C. A.

The Y. M. C. A. is organized to correlate religion with college life and to foster good fellowship among men on the campus.

The Y. M. C. A. is open to all men who have paid the membership fee of one dollar per year.

Meetings are held on the first and third Wednesday of each month.

Officers

President Frank Alcamo
 Vice-President Robert Sudor
 Secretary Dale Milligan
 Treasurer Sam Bernunzio
 Chaplain John Benson
 Religious Chairman Robert Beezer
 Freshman Chairman Walter Hill
 Publicity Chairman Jess Badger
 Dramatic Chairman Frank Buchanan
 Campus Affairs Chairman Fred Craft
 Public Affairs Chairman Walter Hill

Athletic Chairman Wilbur Searle
 Music Chairman Tullia Pignani
 Sponsors Messrs. Iams, Johnson,
 Dimit, Remley

Y. W. C. A.

The Young Women's Christian Association sponsors various types of activities. Religious interests find expression in group discussions and in the Morning Watch Services held each Monday morning; in the special Thanksgiving and Easter Watch Services and in the Annual Thanksgiving Pageant. Social functions such as the Freshman party in September; the annual dinner in November, the Tea-dance in January, and the frequent teas held during the year give opportunity for making new friendships. Community service reaches a climax in the White Gift Service at Christmas time.

Exchange programs with other colleges, attendance at regional conferences and the Eagles Mere summer convocation, and membership in the world Student Christian Movement provide contacts with the larger issues of state, national and world problems.

Membership is open to all women students and faculty upon payment of dues.

Officers

President Vivian Kennedy
 Vice-President Marie Hetager
 Secretary Janet Waring
 Treasurer Virginia Roberts
 Assistant Treasurer Faye Glessner
 General Sponsor Dorothy Murdock



BASKETBALL AT INDIANA

Athletics

1941

1942

FOOTBALL SCHEDULE**1941**

September 27—Lock Haven	Away
October 4—Mansfield	Away
October 11—Edinboro	Home
October 18—Slippery Rock	Home
(Homecoming)	

October 25—West Chester	Home
November 1—Clarion	Home
November 8—California	Away
November 15—Shippensburg	Home

BASKETBALL SCHEDULE**1941 - 1942**

December 13—St. Francis	Away
December 16—St. Vincent	Home
December 19—Slippery Rock	Away
January 9—Waynesburg	Away
January 10—California	Away
January 17—Lock Haven	Home
January 20—St. Vincent	Away
January 24—Lock Haven	Away
January 27—Edinboro	Home
January 31—California	Home
February 3—Clarion	Home
February 7—Slippery Rock	Home
February 11—Pitt	Away
February 23—Waynesburg	Home
February 27—Edinboro	Away
February 28—Clarion	Away
March 6—Millersville	Away
March 7—Shippensburg	Away

BOXING SCHEDULE**1942**

January 24—Columbus University	Home
February 9—Murray State T. C.	Home
February 14—Lock Haven	Home
February 28—Western Maryland	Home

WRESTLING SCHEDULE**1942**

February 12—Kutztown	Home
February 14—Clarion	Away
February 20—Clarion	Home
February 25—Kent University	Away
March 6—State Meet—Lock Haven	Away

SWIMMING SCHEDULE**1942**

January 31—Slippery Rock	Home
February 7—Edinboro	Away
February 13—Carnegie Tech	Away
February 21—Greensburg Y	Home
February 25—Greensburg Y	Away
February 28—Allegheny College	Away

BASEBALL SCHEDULE**1942**

April 16—Shippensburg	Away
April 17—West Chester	Away
April 18—Lock Haven	Away
April 22—Frostburg, Md.	Home

April 25—University of Pittsburgh	Away
May 1—St. Vincent College	Away
May 5—St. Francis College	Home
May 9—Lock Haven	Home
May 12—St. Francis College	Away
May 15—Fairmont (W. Va.)	Home
May 16—West Liberty (W. Va.)	Home
May 20—Duquesne University	Home
May 23—St. Vincent College	Home

TENNIS SCHEDULE

1942

April 28—St. Vincent	Home
April 30—Clarion	Home
May 2—University of Pittsburgh	Home
May 5—Shippensburg	Away
May 9—Slippery Rock	Home
May 11—Grove City	Away
May 13—Carnegie Tech	Away
May 16—California	Away
May 22—Duquesne University	Away

TRACK SCHEDULE

1942

April 25—Carnegie Tech	Away
May 2—Slippery Rock	Away
May 9—Lock Haven	Away
May 16—Tri-State Meet	Away
Geneva College	

ATHLETIC BOARD

1941 - 1942

Faculty

LeRoy A. King, President, Ex-Officio;
George P. Miller, Director of Health Education;
R. W. Timmons, C. K. Ewing, P. H. Boyts, L. Ellenberger, E. E. Prugh, H. W. Thomas.

Students

Russell Santangelo, Milton Carter, Fred Craft, Robert Sliker, Matthew Hohn, Serenus Dossi, Fred Stokes.

VARSITY SPORTS

1941 - 1942

Football
Basketball
Track
Baseball
Boxing
Wrestling
Tennis
Swimming

WOMEN'S SPORTS

1941 - 1942

Field Hockey
Volleyball
Basketball
Softball
Tennis
Archery
Swimming

ATHLETIC COMPETITION REGULATIONS 1941 - 1942

Rules and Regulations governing Athletic Competition of State Teachers Colleges as approved by the Board of Presidents and State Superintendent of Public Instruction.

Section 1.

The president of each college shall be responsible for its athletics. He or his authorized representative shall accompany any team which represents the college in any athletic contest.

Section 2

No student who has completed the number of credits required for graduation in his curriculum, or who has been in attendance more than three years in his curriculum, or, who is not maintaining a passing grade in at least twelve (12) semester hours of work, in accordance with provisions of section 3, shall be eligible to compete in any contest.

Section 3.

A student to be eligible must have secured a passing grade in at least 12 credit hours of work in the regular reporting period for all students. It is permissible for a college to have a regular reporting system involving more frequent reports. Such periods shall not be less than three weeks in length.

Section 4.

No student who has competed under a false name or is receiving money or other valuable consideration, either directly or indirectly, for competing in athletic contests is eligible to take part in any contest during the semester in which such infraction took place.

Section 5.

No student shall be permitted to compete who did not enter his or her respective college on or before October 1st, in the first semester, or on or before February 20th in the second semester.

Section 6.

No member of a college team shall be permitted to engage in athletic activity or any other team in the same sport during the playing season in which he is participating on a team representing the college.

Section 7

At least four days before every official game eligibility lists, certified by the Presidents of the competing colleges shall be exchanged.

Section 8.

No student transferring from any four-year institution of collegiate rank, except from a regularly accredited Junior College, to a State Teachers College shall be eligible for any intercollegiate competition until after a year of residence.

Where one year intervenes between attend-

ance at an institution of collegiate rank and matriculation in a State Teachers College, a student so enrolled is not to be considered as a transfer and shall be eligible for participation in athletics.

Section 9.

The student who trains at a training camp with a college before the football season opens but who does not register at the college is eligible to enter a State Teachers College and play that season.

Section 10

The maximum number of hours which a student may be employed by a Teachers College shall be twenty hours per week, and the maximum amount of money per hour shall be thirty cents; provided, that in case of students who are not taking the regular amount of school work a proportionate increase in the number of working hours is permissible; and provided further, that students employed by the Teachers Colleges for more than twenty hours per week are not eligible to compete in athletic sports. This regulation shall include all types of payrolls under the direction of the college.

Section 11

All matters relating to intercollegiate athletic questions and which require interpretation shall be referred to the Committee on Athletics.

Section 12

A Teachers College varsity team may not play a high school, a college or a university freshman or junior varsity team either in a practice or scheduled game.

Section 13

These regulations shall apply in all intercollegiate contests.

ATHLETIC AWARD SYSTEM

The Varsity "I" is awarded in baseball, basketball, football, track, boxing, tennis, and wrestling for participation in at least one-half of the games and upon the recommendation of the coach.

Numerals are awarded to members of the squad who have been regular in attendance at practice and who have shown cooperation throughout the season.

Sweaters are awarded to each player after he has won his second "I" in the same sport.

Service awards such as gold footballs, basketballs, etc., are given to senior members of each varsity squad who have participated for three years, during which time attendance at practice has been faithful and at least one letter has been earned by participation in one-half or more of the games.

Team Managers and Cheerleaders and the Indiana Indian win numerals their first year.

The Varsity "I" their second year and a jacket their third year of service.

Note: No athlete can earn more than one sweater regardless of the number of sports he has been in and the letters he has won.

Awards are symbolical of work well done.

INTRAMURAL SPORTS

The varsity and intramural athletic programs, improved and organized as they are today, offer many advantages to all students desiring to participate in them. It is wise for every college student to take part in a branch of athletics suited to his physical ability and needs. Many students are physically unable to participate in the more strenuous competitive program, but every student can find some activity to suit his physical capacity in the Intramural Program. A careful study of one's physical condition and needs, supplemented by the advice of a leader in the field, puts one in a position to make a wise choice from the various activities offered in the Intramural program.

The chief aims of the Intramural sports program as developed at Indiana are—

1. Athletics for present enjoyment and improvement of health.
2. To teach and train students in athletic activities in which they can participate in after school life as a profitable use of leisure time.

3. To develop habits of good sportsmanship and fair play.
4. To acquire a knowledge of the rules and skills required and to prepare students to organize and promote Intramural sports in the public schools.

Awards

Awards are given to three members of the senior class who have been most active in the Intramural program. These awards consist of beautiful Intramural jackets. The awards are based on a point system in addition to which the recipient must have proved his knowledge of major sports by the passing of tests on the rules and regulations of the games. The recipient must have served as an organization manager in addition to the above requirements.

The following sports are included in the Intramural Program:

- | | |
|---------------------|-------------------|
| 1. Badminton | 11. Rifle |
| 2. Basketball | 12. Soccer |
| 3. Boxing | 13. Speedball |
| 4. Cross Country | 14. Swimming |
| 5. Football (6 man) | 15. Tennis |
| 6. Foul Shooting | 16. Track |
| 7. Hiking | 17. Volleyball |
| 8. Horseshoes | 18. Winter Sports |
| 9. Softball | 19. Wrestling |
| 10. Ping Pong | |

MEN'S VARSITY "I" CLUB

I—Purpose and Objectives

- A. To promote and foster good fellowship, sportsmanship, and friendly feeling or co-operation among the athletes of this and rival colleges.
- B. To stimulate interest in athletics of the college.
- C. To provide competent and capable athletic aggregations to admirably represent the college in inter-collegiate athletic engagements.
- D. To consider a qualified scholastic standing a noteworthy requisite for a Varsity "I" member.
- E. To interest outstanding athletes to enter our school.
- F. To sponsor worthwhile entertainment in one form or another, for the benefit and enjoyment of the general student body, as well as of the club.

II—Membership

- A. The organization shall include and comprise those individuals who have been certified by the College Athletic Committee as having won their letter (Varsity "I") in any one of the major or minor sports of the college.
- B. The President of the college appoints an Athletic Committee or Council. The male

members of this committee automatically become members of this club.

- C. Honorary membership may be granted to any individual by a two-thirds vote of the active membership of the club.
- D. Alumni members — graduates who have won a Varsity "I" in any major or minor sport—shall have full rights and privileges except that of voting. The right to vote is reserved for active members only.

WOMEN'S VARSITY "I" CLUB CONSTITUTION

Article I—Purpose

Section 2

- A. To continue the promotion of athletics on the part of the girls who have already won their letters.
- B. To promote the activities of the Women's Athletic Association and to act as a service organization for other girls in the college.
- C. To bind the active members closer together by means of occasional social functions.
- D. To keep in touch with Alumnae.

Article II—Membership

Section 1

- A. Membership in this organization is auto-

matically attained by earning 1000 points in accordance with the point system as adopted by the Women's Athletic Association.

Officers

President	Ethel Hornick
Vice-President	Isobel Opel
Secretary	Elsie Hedfors
Alumni Secretary	Pauline Weed
Treasurer	Lois Teeter
Sponsor	Malinda Hamblen

Awards of the Women's Varsity "I"

These awards are given only to girls who have received their "I's" but should be worked for during the entire four years.

Efficiency Award

A sweater shall be given to those active members who show their all-around excellence by having fulfilled the following requirements:

1. Pass Intermediate Red Cross Swimming test.
2. Receive a grade of C in at least two team sports.
3. Participate in an extra-curricular tournament of at least one team sport. (Hockey, soccer, basketball, baseball, volleyball).

4. Receive a C rating in at least one individual or dual sport.
5. Participate in an extra-curricular tournament or meet in one individual or dual sport. (Tennis, golf, archery, swimming.)
6. Receive a C rating in one dancing class.
7. Officiate or serve as manager in one extra-curricular sport or assist in any class or activity.
8. Maintain a C scholastic average.

Service Award

How attained:

1. On the basis of personality and character.
2. On scholastic standing.
3. On the basis of participation.
4. On the basis of service.

The service award committee shall be composed of the sponsors of the Women's Athletic Association and the Women's Varsity "I" Club.

WOMEN'S ATHLETIC ASSN.

The purpose of the Association is to promote interest in all sports and physical activities as a means of securing recreation, physical efficiency, scholarship and good fellowship.

Membership is open to all women students in the college. Membership entitles the holder to try out for teams, and to earn points for athletic awards such as numerals and varsity letters.

Sponsor Lena Ellenberger

WINTER SPORTS CLUB

The Winter Sports Club was organized during the winter of 1939-1940. The purpose of this club is to provide an opportunity for its members to engage in hiking, skating, skiing, snobogganing, and tobogganing.

Numerous trips are made to the College Lodge during the winter months where students may enjoy many types of winter sports and get together for a socially good time.

Several trips are usually made to Cook's Forest, Kiski, and Johnstown for the purpose of enjoying skating, skiing, and tobogganing.

The Winter Sports Club is an All-Campus organization and membership is open to all students and faculty. The annual dues are 75 cents per year.

Sponsor Paul H. Boyts

THE RIFLE CLUB

The purpose of the Rifle Club is to train people in the safe and proper use of firearms, especially the rifle. Those who are interested in this type of sportsmanship, who possess the necessary mental and physical requirements are eligible as members. Officers for each year are elected early in the fall.

Sponsor G. G. Hill

FLY CASTING AND PLUG CASTING CLUB

The purpose of this club is to teach people the proper method of casting flies and other light lures with the fly rod and plug, and heavier lures with the casting rod. There are no officers in this organization. Those who show a genuine interest in fishing are eligible for this club.

Sponsor G. G. Hill



COLLEGE SPIRIT AT INDIANA

Songs and Cheers

1941

1942

CHEERLEADERS

The Cheerleaders are the main functionaries in building and maintaining student spirit and morale at its necessary high peak. Try outs for positions are held early in the fall and all candidates are welcome. Give these hard-working people a boost with your support.

SONGS

The Beacon Light

In the ages long departed
 Slowly grew the need of light;
 Beacons now illumine each highroad
 Showing ways of Truth and Right.
 Years ago our Indiana
 Raised her tower to the sky
 Here a glowing beacon lifted
 Kindling hearts to purpose high.

CHORUS

Then it's hail to Indiana!
 From the East to boundless West.
 Never burned a beacon brighter,
 Never was a way more blest
 For the far off goal of learning;
 We who seek and catch her beam,
 Send it forth to darkened byways
 In an ever-widening stream.

Our forefathers found the trail here
 Blazed where red men softly trod,
 Patiently subdued the forest,
 Plowed and sowed the virgin sod;

And at last from labors lessened
 Looked they upward for the light,
 Flaming from the beacon tower
 Where our college crowns the height.
 Words—Margaret Hawkins
 Music—Carolyn Gessler

Pennsylvania

Pennsylvania, my native state,
 To you we pledge our devotion.
 Pennsylvania, our loyalty is boundless as the ocean.

REFRAIN

Pennsylvania, Pennsylvania, strong and true
 Pennsylvania, Pennsylvania, hear our song to you.

There is beauty in your mountains,
 There is peace upon your hills,
 And where e'er I roam
 My only home is Pennsylvania.

Pennsylvania, we thrill with pride
 To be your loyal descendants,
 Pennsylvania, all hail to you,
 The foundation of Independence.

School Song

Come and join our song of triumph,
 Bring to Indiana's fame
 Laurels of each new endeavor
 That will glorify her name.
 Forward then for Indiana!
 Make these hills and valleys ring,

Lift her crimson and her silver gray
Honor to your Alma Mater bring,
Come, ye sons and daughters of her heart
Each to his own valiant part,
Fight till you've won.
Then, the strife of battle done,
Sing, sing on for Indiana!

Evelyn Jones

Alma Mater

To our noble Alma Mater's name
We, her children, sing a joyful lay,
And to her a new allegiance pledge,
That lives beyond a day.

REFRAIN

Sing, O, sing! Our Alma Mater's praise,
Hail, O, hail! her color's gleaming hue!
Give to her our homage and our love
And to her name be true.

A prayer for her who sheltered us,
A hope no child her name will stain,
A cheer thrice giv'n with hearty voice,
And now the sweet refrain.

Of loyalty are symbols twain,
Her colors, crimson and the gray,
"Dear Indiana Mother Fair,"
The burden of our lay.

Words and music by
Mrs. Hamlin E. Cogswell

Spirit of Indiana

On! On! On! On to victory,
Everyone expects to see you win today.
Fight to win! "Play the game square!"
Always for your Alma Mater do and dare
Now then go! Give them not a show,
You have skill and daring, that we know.
For not only will you score, but will add a
few points more.

Just to show them how we do at Indiana.
Indiana, don't you hear our cheer?
That you'll honor us we have no fear.
See your pennant floating o'er the field!
Unto foemen you will never yield.
You will hear us as we shout and sing,
Other teams will know their fate,
When they meet the "Red and Slate."
It's the way we always do at Indiana.

Victory! Victory! Victory!
Victory! Victory! Victory!
With your faces ever towards the foe.
Pressing forward down the field you go!
Victory! Victory! Victory!

Every man is finding every play,
For 'tis written on your shield,
"Unto foemen never yield."
We will always do our best for Indiana.
Words—Mrs. Hamlin E. Cogswell
Music Mr. Hamlin E. Cogswell

God Bless America

While the storm clouds gather
Far across the sea,

Let us swear allegiance
 To a land that's free;
 Let us all be grateful
 For a land so fair,
 As we raise our voices
 In a solemn prayer.

God bless America.
 Land that I love,
 Stand beside her and guide her
 Thru the night with a light from
 above;
 From the mountains, to the prairies,
 To the oceans white with foam,
 God bless America
 My home sweet home.

America

1. My coun - try, 'tis of thee,
 Sweet land of lib - er - ty,
 Of thee I sing.
 Land where my fa - thers died!
 Land of the Pil - grim's pride!
 From ev - 'ry moun - tain side,
 Let free - dom ring!
2. My na - tive coun - try, thee,
 Land of the no - ble free,
 Thy name I love.
 I love thy rocks and rills,
 Thy woods and tem - pled hills;
 My heart with rap - ture thrills
 Like that a - bove.

3. Let mu - sic swell the breeze,
 And ring from all the trees
 Sweet free - dom's song.
 Let mor - tal tongues a - wake;
 Let all that breathe par - take;
 Let rocks their si - lence break,
 —The sound pro - long.
4. Our fa - thers' God, to thee,
 Au - thor of lib - er - ty,
 To Thee we sing.
 Long may our land be bright
 With free - dom's ho - ly light;
 Pro - tect us by Thy might,
 Great God, our King!

The Star-Spangled Banner

1. Oh, . . . say! can you see,
 by the dawn's ear - ly light,
 What so proud - ly we hailed
 at the twi - light's last gleam - ing?
 Whose broad stripes and bright stars,
 thro' the per - il - ous fight,
 O'er the ram - parts we watched,
 were so gal - lant - ly stream - ing?
 And the rock - et's red glare,
 the bombs burst - ing in air,
 Gave proof thro' the night
 that our flag was still there.
 Oh, . . . say, does that Star-span - gled
 Ban - ner yet wave
 O'er the land of the free
 and the home of the brave?

2. On the shore dim - ly seen
thro' the mists of the deep,
Where the foe's haugh - ty host
in dread si - lence re - pos - es,
What is that which the breeze,
o'er the tow - er - ing steep,
As it fit - ful - ly blows,
half con - ceals, half dis - clos - es;
Now it catch - es the gleam
of the morn - ing's first beam,
In full glo - ry re - flect - ed,
now shines on the stream;
'Tis the Star-span - gled Ban - ner;
oh, long may it wave
O'er the land of the free
and the home of the brave!
3. Oh, . . . thus be it ev - er
when free - men shall stand
Be - tween their loved home
and the war's des - o - la - tion.
Blest with vic - t'ry and peace,
may the heav'n-res - cued land
Praise the Pow'r that hath made
and pre-served us a na - tion!
Then . . . con - quer we must,
when our cause is just,
And . . . this be our mot - to:
"In God is our trust!"
And the Star-span - gled Ban - ner,
in triumph shall wave
O'er the land of the free
and the home of the brave!

America, the Beautiful

1. O beau - ti - ful for spa - cious skies,
For am - ber waves of grain, . . .
For pur - ple mountain maj - es - ties
A - bove the fruit - ed plain.
A - mer - i - ca! A - mer - i - ca!
God shed His grace on thee,
And crown thy good with broth - er - hood
From sea to shin - ing sea.
2. O beau - ti - ful for pil - grim feet
Whose stern impassioned stress . . .
A thor - ough - fare for free - dom beat
A - cross the wil - der - ness.
A - mer - i - ca! A - mer - i - ca!
God mend thine ev - 'ry flaw,
Con - firm thy soul in self - con - trol,
Thy lib - er - ty in law.
3. O beau - ti - ful for he - roes proved
In lib - er - at - ing strife, . . .
Who more than self their coun - try loved,
And mer - cy more than life.
A - mer - i - ca! A - mer - i - ca!
May God thy gold re - fine
Till all suc - cess be no - ble - ness
And ev - 'ry gain di - vine.
4. O beau - ti - ful for pa - triot dream
That sees be - yond the years . . .
Thine al - a - bas - ter cit - ies gleam
Undimmed by hu - man tears.
A - mer - i - ca! A - mer - i - ca!

God shed His grace on thee,
And crown thy good with broth - er - hood
From sea to shin - ing sea.

CHEERS

- 1 **Pep Yell**
Your pep—your pep
You've got it, now keep it,
Doggone it, don't lose it,
Your pep—your pep
You've got it, now keep it,
Doggone it, don't lose it,
Your pep—your pep
You've got it, now keep it,
Doggone it, don't lose it,
Your P—E—P.

- 2 **Rah Yell**
rrrrrRah — In-Di-An-A — rrrrrRah

- 3 **Divided Team Yell**
T E A M
T E A M
T E A M
Team, Team, Team

- 4 **Individual's Yell**
Yea (Coach) Yea (Miller)
Yea Coach Miller ! !

- 5 **Alleganic—Ganic—Ganac**
Alleganic—ganic—ganac
Alleganic—ganic—ganac
Hoo—rah Hoo—rah
IN—DI—ANNN—A
I-N-D-I-A-N-A (Spell)

- 6 **Locomotive "I" Yell**

I-N-D-I-A-N-A (slow)
I-N-D-I-A-N-A (faster)
I-N-D-I-A-N-A (fast)

- 7 **Fight**
Fight T-E-A-M Fight
Fight T-E-A-M Fight
Fight T-E-A-M Fight
FIGHT FIGHT FIGHT

- 8 **Indiana Chant**
In-Di-An-A Fight
In-Di-An-A Fight
In-Di-An-A Fight

- 9 **Sky Rocket**
(Whistle) Z — Z — Z — Z — Z — Z
Boom AH
Team Team Team

- 10 **Go, Indiana, Go!**

Go, Indiana, go;
Go, Indiana, go;
Hit 'em high,
Hit 'em low,
Go, Indiana, go;

- 11 **Go!**
Alle ga zip
Zippy Zam!
Yea! Indiana!
Make 'em scram.

READY TO GO!



Scheduled Activities

1941

1942

REGULARLY SCHEDULED ACTIVITIES for each month

First Monday

- 7:00 A.M.—Y.W.C.A. Morning Watch
11:00 College Choir in J.S. Aud.
7:30 Leonard Literary in J.S. Aud.

Second Monday

- 7:00 A.M.—Y.W.C.A. Morning Watch
11:00 College Choir in J.S. Aud.
8:00 I. R. C.—Room 30 L. Hall
5:00 Advisory Council of Res. W. L. in Dean Kimball's office

Third Monday

- 7:00 A.M.—Y.W.C.A. Morning Watch
11:00 College Choir in J.S. Aud.
7:30 Leonard Literary in J.S. Aud.
7:30 Newman Club

Fourth Monday

- 7:00 A.M.—Y.W.C.A. Morning Watch
11:00 College Choir in J.S. Aud.
6:45 Kappa Omicron Phi
7:30 Open Forum

First Tuesday

- 4:00 Orchestra in J. S. Aud.
5:00 Resident Women's League in Dean Kimball's office
6:30 Pan-hellenic Association meets
7:30-8:30 I.C.G. — 26 L. Hall
7:30 Alpha Omega Geog. — 1 L. Hall
7:30-9:00 Art Club (weekly) in dept.

Second Tuesday

- 4:00 Orchestra in J. S. Aud.
6:45 Hall meetings
7:30 Home Ec. Club in dept.
Elementary Club in J. S. Aud.
Art Club in Department
Photography Club — 4 L. Hall
Secondary Club (Oct., Dec., etc.)
Pi Omega Pi

Third Tuesday

- 4:00 Orchestra in J. S. Aud.
5:00 Resident Women's League in Dean Kimball's office
7:30 Art Club in Department
I.C.G. — 26 L. Hall

Fourth Tuesday

- 4:00 Orchestra in J. S. Aud.
7:30 Art Club in Department

First Wednesday

- 11:00 College Choir in J.S. Aud.
- *4:10 Men's Glee Club in C-2
- 4:10 Women's Choral Club in J.S. Aud.
- 4:10 String Quartet in Music Dept.
- 5:15 Freshman Hall Counselors in Dean Kimball's office
- 7:00-9:00 Rifle Club in Gym
- 7:30 Y.M.C.A.—Jr. High Aud.
- Y.W.C.A.—Cabinet Meetings

Second Wednesday

- 11:00 College Choir in J.S. Aud.
- *4:10 Men's Glee Club in C-2
- 4:10 Women's Choral Club in J.S. Aud.
- 4:10 String Quartet in Music Dept.
- 6:30 Women's Varsity "I"
- 7:00-9:00 Rifle Club in Gym
- 7:30 Faculty Meeting in Rec. Hall

Third Wednesday

- 11:00 College Choir in J.S. Aud.
- *4:10 Men's Glee Club in C-2
- 4:10 Women's Choral Club in J.S. Aud.
- 4:10 String Quartet in Music Dept.
- 7:00-9:00 Rifle Club in Gym
- 7:30 Y.M.C.A.—Jr. High Aud.
- *Marching band during football; Glee Club after football.

Fourth Wednesday

- 11:00 College Choir in J.S. Aud.
- *4:10 Men's Glee Club in C-2
- 4:10 Women's Choral Club in J.S. Aud.
- 4:10 String Quartet in Music Dept.
- 6:30 Women's Varsity "I"
- 7:00-9:00 Rifle Club in Gym
- 7:00 Erskine Club
- *Marching band during football; Glee Club after football.

First Thursday

- 10:00 Advisory Meetings
- 3:00 Instrumental Methods in Music Ed. dept.
- 4:00 Jr. Choir in J.S. Aud.
- 4:00 Student Council
- 6:45 Sororities & Fraternities

Second Thursday

- 10:00 Advisory Meetings
- 3:00 Instrumental Methods in Music Ed. dept.
- 4:00 Jr. Choir in J.S. Aud.
- 6:45 Sororities & Fraternities

Third Thursday

- 10:00 Advisory Meetings
- 12:40 Non-Resident Women in Lounge
- 3:00 Instrumental Methods in Music Ed. dept.
- 4:00 Jr. Choir in J.S. Aud.
- 6:45 Sororities & Fraternities

Fourth Thursday

- 10:00 Advisory Meetings
- 3:00 Instrumental Methods in Music Ed. dept.
- 4:00 Jr. Choir in J.S. Aud.
- 6:45 Sororities & Fraternities

First Friday

- 11:00 College Choir in J.S. Aud.
- 3:00-5:00 Concert Band in J.S. Aud.
- 4:00 Student Cooperative Association
- 7:00 Kappa Delta Pi
- 7:30 Methodist Club at Church

Second Friday

- 11:00 College Choir in J.S. Aud.
- 3:00-5:00 Concert Band in J.S. Aud.
- 4:00 Y.W.C.A. Tea
- 7:30 Quill Club

Third Friday

- 11:00 College Choir in J.S. Aud.
- 12:45 Non-Resident Students in J.S. Aud.
- 3:00-5:00 Concert Band in J.S. Aud.
- 3:00-5:30 Robinson Poetry Club
- 6:45 Alpha Phi Gamma

Fourth Friday

- 11:00 College Choir in J.S. Aud.
- 3:00-5:00 Concert Band in J.S. Aud.
- 4:00 Y.W.C.A. Tea
- 7:30 Quill Club

First Saturday

- 8:00 Jr. Choir in J.S. Aud.
- 10:00-12:00 Orchestra in J.S. Aud.
- 7:00-10:00 All College Dance in Rec. Hall

Second Saturday

- 8:00 Jr. Choir in J.S. Aud.
- 10:00-12:00 Orchestra in J.S. Aud.
- 7:00-10:00 All College Dance in Rec. Hall

Third Saturday

- 8:00 Jr. Choir in J.S. Aud.
- 10:00-12:00 Orchestra in J.S. Aud.
- 7:00-10:00 All College Dance in Rec. Hall

Fourth Saturday

- 8:00 Jr. Choir in J.S. Aud.
- 10:00-12:00 Orchestra in J.S. Aud.
- 7:00-10:00 All College Dance in Rec. Hall

COLLEGE CALENDAR

1941 — 1942

SEPTEMBER

MON. 8

Faculty Meeting
Freshmen arrive

TUES. 9

Final date for entrance exams

WED. 10

Registration and classification of
Freshmen

THURS. 11

Registration and classification of all other
students

FRI. 12

CLASSES BEGIN
Home Economics Picnic—Lodge

SAT. 13

YWCA—Big-Little Sister Party in Gym

SEPTEMBER

SUN. 14

MON. 15

TUES. 16

WED. 17

YWCA Meeting in "Y" Room
YMCA Meeting

THURS. 18

Faculty Club Picnic—Lodge

FRI. 19

Art Club Picnic—Lodge
Kappa Omicron Phi Picnic—(Shelter at
Lodge)
English Department Reception

SAT. 20

Panhellenic Tea for Freshmen Women
Pi Lambda Theta dinner Meeting—
(faculty group) 6:00 p. m.

SEPTEMBER

SUN. 21

YMCA sponsors out-door Vespers

MON. 22

TUES. 23

WED. 24

THURS. 25

FRI. 26

Educational Conference (2 days)
 Alpha Sigma Alpha Pledge Party
 Activities Cottage
 Varsity "I" Party for Freshmen in G-1
 YWCA Tea—"Y" Room
 Jr. Chamber of Commerce Outing at
 Lodge

SAT. 27

Educational Conference, cont'd
 Football—Lock Haven—Away
 Phi Delta Kappa—Lodge—afternoon
 Founders Day Luncheon—1:00 p. m.

SEPTEMBER

SUN. 28

MON. 29

TUES. 30

OCTOBER

WED. 1

YWCA—Candlelight Service
 YMCA Outing—Lodge

THURS. 2

FRI. 3

All Church Parties for Students

SAT. 4

Football—Mansfield—Away
 YWCA Country Party—Lodge
 YMCA and YWCA Retreat—Lions
 Health Camp

OCTOBER

SUN. 5

Rev. Ralph W. Sockman, D. D.
Minister Christ Church, New York City

MON. 6

TUES. 7

WED. 8

Faculty Meeting— Dr. King

THURS. 9

FRI. 10

Kappa Omicron Phi— pledging and initiation in Home Ec. Dept.
YWCA Novelty Tea— "Y" Room
Non-Residents' Outing— Lodge

SAT. 11

Football—Edinboro—Home
Newman Club Spaghetti Dinner—Lodge

OCTOBER

SUN. 12

MON. 13

TUES. 14

WED. 15

Coop. Assn. presents Pasquale Opera,—
Evening—New Auditorium
YWCA Meeting—"Y" Room
YMCA Meeting: Movies

THURS. 16

FRI. 17

Women's Varsity "I"—Lodge

SAT. 18

HOME COMING
Football—Slippery Rock at Indiana

OCTOBER

SUN. 19

MON. 20

TUES. 21

WED. 22

THURS. 23

FRI. 24

YMCA—Old Fashioned Hay Ride
YWCA—Witches' Tea—"Y" Room
Theta Sigma Upsilon—Minerva Day
Banquet

SAT. 25

Football—West Chester—Home

OCTOBER

SUN. 26

MON. 27

TUES. 28

WED. 29

THURS. 30

FRI. 31

Alpha Sigma Tau Founders' Day Banquet
Hallowe'en Party—Recreation Hall

NOVEMBER

SAT. 1

Football—Clarion (Home)
Senior Prom

NOVEMBER

SUN. 2

MON. 3

TUES. 4

WED. 5

YWCA—Membership Dinner—Dining
Room
YMCA Meeting—Book Review

THURS. 6

FRI. 7

Phi Sigma Pi House Party
Theta Sigma Upsilon Rush Party

SAT. 8

Alpha Sigma Alpha—Rush Party—Lodge
Football—California (Away)

NOVEMBER

SUN. 9

MON. 10

TUES. 11

WED. 12

Faculty Meeting—Dr. King
YMCA—All male cast play in auditorium

THURS. 13

YMCA—All male cast play in auditorium

FRI. 14

Kappa Omicron Phi—Dept. Professional
Meeting
Pi Kappa Sigma—Founders Day—Country
Club
Alpha Sigma Tau—Rush Party

SAT. 15

Football—Shippensburg at Indiana
Sophomore Prom

NOVEMBER

SUN. 16

MON. 17

TUES. 18

WED. 19

YWCA—"Y" Room
YMCA—Activity Night

THURS. 20

Theta Sigma Upsilon—Professional Meet-
ing, Activities Cottage

FRI. 21

Faculty Club Dinner

SAT. 22

NOVEMBER

SUN. 23

The Burning Altar—Auditorium

MON. 24

TUES. 25

WED. 26

Inter-Fraternity Dance
YWCA Sunrise Service—Recreation Hall
Thanksgiving Recess begins—12 M.

THURS. 27

FRI. 28

SAT. 29

NOVEMBER

SUN. 30

DECEMBER

MON. 1

Thanksgiving Recess ends—12 M.

TUES. 2

WED. 3

YMCA and YWCA—Joint Meeting

THURS. 4

FRI. 5

Home Economics Christmas Party

SAT. 6

DECEMBER

SUN. 7

MON. 8

TUES. 9

WED. 10

Faculty Meeting—Dr. King

THURS. 11

FRI. 12

Kappa Omicron Phi Banquet
YWCA Christmas Tea—"Y" Room
Jr. Chamber of Commerce Party for
Willard Home Children in Rec. Hall

SAT. 13

Basketball—St. Vincent—Away

DECEMBER

SUN. 14

White Gift Service—Auditorium

MON. 15

TUES. 16

Basketball—St. Vincent—Home

WED. 17

Christmas Dinner in Dining Room

THURS. 18

FRI. 19

Panhellenic Dance
Basketball—Slippery Rock—Away

SAT. 20

Christmas Recess after last class.

DECEMBER

SUN. 21

MON. 22

TUES. 23

WED. 24

THURS. 25

FRI. 26

SAT. 27

DECEMBER

SUN. 28

MON. 29

TUES. 30

WED. 31

JANUARY

THURS. 1

FRI. 2

SAT. 3

JANUARY

SUN. 4

MON. 5

12 M.—Christmas Recess ends

TUES. 6

WED. 7

YWCA Meeting—"Y" Room
YMCA Meeting—Hobby Night

THURS. 8

FRI. 9

Phi Sigma Pi—Founders Day Banquet—
Country Club
Kappa Omicron Phi—Professional Meet-
ing—Department
Basketball—Waynesburg—Away

SAT. 10

Basketball—California—Away

JANUARY

SUN. 11

MON. 12

TUES. 13

WED. 14

Faculty Meeting—Dr. King

THURS. 15

FRI. 16

YWCA Hobby Tea—"Y" Room

SAT. 17

Basketball—Lock Haven (Home)

JANUARY

SUN. 18

MON. 19

TUES. 20

Basketball—St. Vincent—Away

WED. 21

YMCA Meeting

THURS. 22

FRI. 23

SAT. 24

First Semester Ends—after last class
Basketball—Lock Haven—Away

JANUARY

MON. 26

Second Semester—Classes begin

SUN. 25

TUES. 27

Basketball—Edinboro—Home

WED. 28

THURS. 29

FRI. 30

SAT. 31

Basketball—California—Home
YWCA Tea Dance—afternoon—Recreation
Hall

FEBRUARY

SUN. 1

Spiritual Life Week begins
Dr. Paul E. Scherer, Holy Trinity Church
New York City

MON. 2

TUES. 3

Basketball—Clarion—Home

WED. 4

YMCA meeting
Spiritual Life Week Ends

THURS. 5

FRI. 6

Winter Sports Carnival—Lodge

SAT. 7

Winter Sports Carnival
Basketball—Slippery Rock—Home

FEBRUARY

SUN. 8

MON. 9

TUES. 10

WED. 11

Faculty Meeting—Dr. King
Basketball—Pitt—Away

THURS. 12

FRI. 13

Kappa Omicron Phi—Pledging and
Initiation
Episcopal Club Party
YWCA Valentine Tea—"Y" Room
YMCA Snow Frolic—Lodge—Pancake
Supper

SAT. 14

Freshman Prom

FEBRUARY

SUN. 15

MON. 16

TUES. 17

WED. 18

YWCA—"Y" Room
YMCA Meeting

THURS. 19

FRI. 20

SAT. 21

Faculty Club Party—J.S. Aud.

FEBRUARY

SUN. 22

MON. 23

Basketball—Waynesburg (Home)

TUES. 24

WED. 25

THURS. 26

FRI. 27

Basketball—Edinboro—Away

SAT. 28

Basketball—Clatsion—Away
YWCA Swim Party—Gym Pool

MARCH

SUN. 1

MON. 2

TUES. 3

WED. 4

YWCA Meeting—"Y" Room
YMCA Meeting—Medical Talk

THURS. 5

FRI. 6

Basketball—Millersville—Away

SAT. 7

Basketball—Shippensburg—Away

MARCH

SUN. 8

MON. 9

TUES. 10

WED. 11

Faculty Meeting—Dr. King

THURS. 12

FRI. 13

Kappa Omicron Phi—Professional Meeting (Department)
YWCA St. Patrick's Day Tea—"Y" Room

SAT. 14

MARCH

SUN. 15

MON. 16

Leonard Literary Production

TUES. 17

WED. 18

YWCA Meeting—"Y" Room
YMCA—Election of Officers
Merchandise Fair (Gym)

THURS. 19

Merchandise Fair (continued)

FRI. 20

SAT. 21

Junior Prom

MARCH

SUN. 22

MON. 23

TUES. 24

WED. 25

THURS. 26

FRI. 27

Theta Sigma Upsilon
Founder's Day Banquet—6:00 o'clock

SAT. 28

MARCH

SUN. 29

MON. 30

Lenten Watch Service—"Y" Room

TUES. 31

Lenten Watch Service—"Y" Room

APRIL

WED. 1

Easter Sunrise Service—Rec Hall
YMCA April Fools Novelty Meeting
Easter Recess begins—12 M.

THURS. 2

Vacation

FRI. 3

SAT. 4

APRIL

SUN. 5

MON. 6

TUES. 7

Easter Recess ends—12 M.

WED. 8

Faculty Meeting—Dr. King

THURS. 9

FRI. 10

Kappa Omicron Phi—Senior Dance
Home Economics Dept.

SAT. 11

APRIL

SUN. 12

MON. 13

TUES. 14

WED. 15

YWCA Meeting "Y" Room

YMCA Meeting—Installation of Officers

THURS. 16

Theta Sigma Upsilon—Professional
Meeting—Activities Cottage

FRI. 17

Non-Resident Outing—Lodge
YWCA Tea—"Y" Room

SAT. 18

Commercial Tea—Recreation Hall
Newman Club Dinner Dance—Country
Club
YMCA Cabinet Ret eat—Lodge
Sophomore examinations

MAY

SUN. 3

MON. 4

TUES. 5

WED. 6

YWCA-YMCA Meeting—"Y" Room

THURS. 7

Faculty Club Spring Meeting

FRI. 8

Installation of Officers—K.O.P. Dept.

SAT. 9

May Day Breakfast—Home Ec. Dept.
 Track—Lock Haven—Away
 Alpha Sigma Alpha Mothers' Day Tea—
 College Inn
 Swing Out
 Pan-American Club—Lodge, 4:10 P. M.

MAY

SUN. 10

MON. 11

TUES. 12

Home Economics Fashion Show—
 College Auditorium

WED. 13

Faculty Meeting—Dr. King

THURS. 14

FRI. 15

Phi Sigma Pi House Party
 Theta Sigma Upsilon Farewell to Seniors

SAT. 16

MAY

SUN. 17

MON. 18

TUES. 19

WED. 20

YMCA—Farewell to Seniors

THURS. 21

FRI. 22

After last class, Second Semester ends

SAT. 23

Alumni Day

MAY

SUN. 24

Baccalaureate

MON. 25

Commencement

JUNE

Summer Session—1942

FIRST SEMESTER

1941-1942

Faculty Meeting	Monday, Sept. 8
Final date for entrance examinations	Tuesday, Sept. 9
Registration and Classification of all Freshmen	Wednesday, Sept. 10
Registration and Classification of all other Classes	Thursday, Sept. 11
Classes Begin	Friday, Sept. 12
Alumni Homecoming	Saturday, Oct. 18
Thanksgiving Recess Begins	Wednesday, 12M, Nov. 26
Thanksgiving Recess Ends	Monday, 12M, Dec. 1
Christmas Recess Begins	After last Class, Saturday, Dec. 20
Christmas Recess Ends.....	Monday, 12M, Jan. 5
First Semester Ends	After last Class Saturday, Jan. 24

SECOND SEMESTER

1941-1942

Classes Begin	Monday, Jan. 26
Easter Recess Begins.....	Wednesday, 12M, Apr. 1
Easter Recess Ends.....	Tuesday, 12M, Apr. 7
Second Semester Ends	After last Class Friday, May 22
Alumni Day	Saturday, May 23
Baccalaureate Sermon	Sunday, May 24
Commencement	Monday, May 25

ADDRESSES OF FACULTY

1941-1942

State Teachers College Phone 711
 King, LeRoy A., President.....J. S. Hall—1860

Alden, Esther H.....	610 Wayne Ave.—1143-J
Anderson, Lois.....	1676 Phila. St.—749-R
Arntz, Mrs. Florence C.....	14 Clark Hall—711
Ayers, Nelle Wren.....	205-A J. S. Hall—711
Beard, Ralph B.....	640 Grant St.—333-W
Beelar, Lola A.....	402 S. 11th St.—711
Belden, Ethel A.....	120 S. 7th St.—1949
Bieghler, E. W.....	West Pike, Box 208—591-J
Borge, Aagot M. K.....	272 S. 7th St.—1529-R
Boys, Paul H.....	1315 School St.—1818
Brenneman, Ruth V.....	561 School St.—1337-R
Buchanan, Inez E.....	405-A J. S. Hall—711
Camp, Harold L.....	44 N. 10th St.—515-R
Chew, Tobias O.....	401 S. 13th St.—919-R
Cheyette, Irving.....	646 Locust St.—1956
Coughlin, Ethel G.....	1052 Grant St.—711
Davis, Guy P.....	667 S. 6th St.—1155-J
Davis, John E.....	1148 School St.—1895
Davis, L. C.....	974 Church St.—542-J
Denniston, Kathryn R.....	911 School St.—915-M
Dimit, Beatty H.....	1094 Oakland Ave.—544-R
Drumheller, Albert E.....	1078 Church St.—1119-R
Duncan, Laura Belle.....	930 Wayne Ave.—966-M
Dunlap, Mary E.....	272 S. 7th St.—1529-R
Egleston, Mrs. Helen.....	922 Church St.—1845-J
Eicher, James E.....	773 Locust St.—541-W
Ellenberger, Lena.....	134 N. 6th St.—1376-R
Emmert, Wilbur.....	1156 Washington St.
Ewing, Charles Kermit	East Pike, R. D. 3—1145-R
Farrell, Ethel L.....	469 J. S. Hall—711
File, Clinton M.....	R. D., Indiana—711
Finter, Elizabeth.....	410 S. 11th St.—711

Gasslander, Mrs. A. M.
 917 Church St.—1078-J
 Graham, Marie Corbett, Twolick Rd.—4112-3
 Gray, Amy.....120 S. 7th St.—1949
 Griffith, Katherine E.....134 N. 6th St.—1376-R
 Hamblen, Malinda.....1020 Washington St.—711
 Hart, Mary.....220 S. 10th St.—454-R
 Hartsock, Margaret.....827 Wayne Ave.—384-R
 Hayes, Leola T.
 Heiges, R. E.....1130 Grant St.—536-R
 Hesse, Myrtle L.....57 Clark Hall—711
 Hill, G. G.....400 S. 11th St.—1969-J
 Hillstrom, Ellen
 Hitchcock, Richard C.....711
 Hughes, Thomas J.....1245 Wash. St.—1266-J
 Iams, Merrill B.....650 Grant St.—1375-M
 Johnson, C. M.....1039 Wash. St.—682-J
 Jones, Carleton C.....1388 Phila. St.—1338-J
 Kimball, Florence B.....J. S. Hall—711
 Kipp, Orval.....1122 Grant St.—1884
 Knowles, Ruth.....24 S. 10th St.—1916-J
 Kough, Irene L.....351 J. S. Hall—711
 Lacy, Kate.....1056 Grant St.—711
 Lappen, Mrs. Thelma.....561 School St.—1317-J
 Littlefield, Lucille.....957 Oakland Ave.—638-J
 Lowman, Margaret Jane
 468 S. 11th St.—648-W
 Lowman, Mary R.....725 School St.—195-J
 McDevitt, Mrs. Maude—400 (Infirmary)—711
 McGrath, Jane L.....J. S. Hall—711
 McLean, Helen.....545 Church St.—471-W
 McLean, Lillian I.....415N J. S. Hall—711
 McLuckie, E. J.....Indiana R. D. 5, —4117-31
 Macdonald, Mrs. L. A.....343 S. 13 St.—91-R
 Mahachek, Joy.....545 Church St.—471-W
 Marshall, Angie.....315N J. S. Hall—711
 Merriman, Helen C.....525 School St.—1167-M
 Miller, George P.....1031 Wash. St.—708-R
 Miller, M. Lincoln.....766 South St.—1658-R
 Montgomery, Mrs. W. L.
 62 Shady Lane, Johnstown—F53713
 Moore, M. Ella.....917 Church St.—1340-R
 Moss, Rachel.....475 S. 7th St.—1502
 Muldowney, Mary H.....215N J. S. Hall—711

Murdock, Dorothy.....1043 Wash. St.—1549-J
 Norton, Mrs. C. B.....1122 Grant St.
 O'Toole, Kathryn.....406 S. 11th St.—711
 Overman, Osie.....42 N. 7th St.—201-M
 Oxley, Ethyl V.....545 Church St.—471-W
 Perkins, Reba Niles.....1127 Grant St.—1159
 Porter, Mrs. Elfa M.....651 Locust St.—1085-R
 Price, Mrs. Lillian H.
 1126 Oakland Ave.—667-R
 Prugh, Earl Elwood.....709 South St.—699-M
 Prutzman, Helen Clare.....119 N. 9 St.—1487-J
 Rankin, Mary I.....42 S. 6th St.—720-M
 Reece, Mrs. Cleaves M.....909 Oakland Ave.
 Reed, Pearl R.....545 Church St.—471-W
 Remley, James.....280 S. 13th St.—612-R
 Remsberg, Laura M.....462 S. 11th St.—543-W
 Reynolds, Ralph W.....363 S. 3rd St.—110-M
 Ridenour, Florence.....1043 Wash. St.—1549-J
 Rink, Ruth M.....450 Church St.—724-R
 Risheberger, Paul A.....1020 Wash. St.—1870
 Rose, Helen.....475 S. 7th St.—1502
 Rowland, Ralph S.....1257 Wash. St.—677-R
 Russell, Mary L.....919 Oakland Ave.—954
 Sanders, A. Pauline.....24 S. 10th St.—1916-J
 Schnell, LeRoy H.....640 Locust St.—1802-R
 Simpson, Vera.....434 J. S. Hall—711
 Skog, Esther M.
 Slaven, Estella M.....116 N. 9th St.—368-J
 Smyth, Thomas.....1050 Wash. St.—1517-R
 Snell, Esther E.....422 (Infirmary)—711
 Sollberger, Dwight E.....734 Wayne Ave.—27-R
 Sprowls, Edna Lee.....231 J. S. Hall—711
 Stabley, Rhodes R.....621 Grant St.—333-M
 Stitt, Lawrence C.....271 S. 13th St.—762-R
 Stitt, Margaret I.....105A J. S. Hall—711
 Thomas, Harold W.....820 Church St.—1985-R
 Thomas, Ruth I.....220 S. 10th St.—454-M
 Thompson, Anna J.....1080 Grant St.—711
 Timmons, Robert W.....1336 School St.—692-M
 Uhler, J. M.....218 S. 11th St.—491-M
 Wallace, M. Florence
 931 Oakland Ave.—896

Walsh, M. J.	282	S. 7th St.	—835
Webb, R. F.	346	S. 13th St.	—183-R
Whitmyre, W. M.	430	S. 11th St.	—1519
Willhite, Lyle O.	420	Oak St.	—499-J
Wills, Marion	305A	J. S. Hall	—711
Zimmerman, Martha E.	953	Wayne Ave.	
Zink, Norah E.	919	School St.	—319

Bursar

Schuster, William.....644 Wayne Ave.—1840

Registrar

Esch, Mary L.....399 S. 6th St.—1403

Secretary to the President

Russell, Martha.....940 Water St.—968

Bookkeeper

Price, John W.....1126 Oakland Ave.—667-R

Treasurer Cooperative Assn.

Woodring, Paul J.....I146 School St.—1179

Supt. of Buildings and Grounds

Butler, C. H.
Office.....112N J. S. Hall—717
Home Address.....1258 School St.—1335-M

Mechanical Director

Eicher, Ward W.
Office.....Basement J. S. Hall—711
Home Address.....1077 Church St.—152

Dietitian

Folger, Mrs. Olive
Office.....J. S. Hall—711
Home Address.....Cottage, Grant Street

House Director

Daugherty, Mrs. H. B.
Office.....J. S. Hall—711
Home Address.....116 N. 9th St.—368-J

Officers

Little, Joe College—711
Home Address.....1187 Grant St.—1489
McFarland, Allen College—711
Home Address.....1125 South Ave.—681-M
Doubles, Leonard College—711
Home Address.....1152 School St.—973-1

Building Custodians

Auditorium.....	Archibald, Andrew
Art, Business, Home Economics	
	Sterling, Edward
Clark Hall.....	Adamson, Irwin
Gymnasium.....	Vinton, Roy
John Sutton Hall House Director	
	Daugherty, Mrs. H. B.
Leonard Hall.....	Compton, Clarence
Training School.....	Sarra, Wilbur
Library.....	
Greenhouse.....	Willis, Ralph A.

ADDRESSES

Name

Street

City

Telephone No.

Name

Street

City

Telephone No.

Name

Street

City

Telephone No.



MEMORIES

ADDRESSES

Name

Street

City

Telephone No.

Name

Street

City

Telephone No.

Name

Street

City

Telephone No.

ADDRESSES

Name

Street

City

Telephone No.

Name

Street

City

Telephone No.

Name

Street

City

Telephone No.

SCHEDULE FIRST SEMESTER

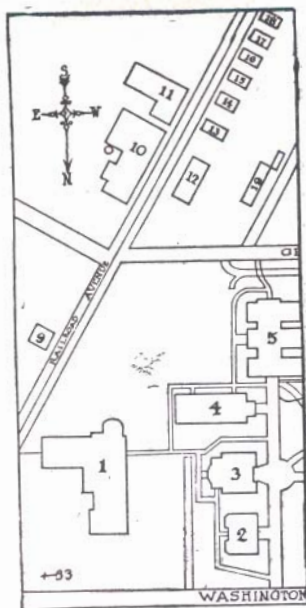
Hours	Monday	Tuesday	Wednesday	Thursday	Friday	Saturday
8:00 - 8:50						
9:00 - 9:50						
10:10 - 11:00		Assembly				
11:10 - 12:00						
		Noon				
1:10 - 2:00						
2:10 - 3:00						
3:10 - 4:00						

No student is permitted to add or drop any subject or to change sections without presenting to his instructor a statement from the Dean's office authorizing the same.

SCHEDULE SECOND SEMESTER

Hours	Monday	Tuesday	Wednesday	Thursday	Friday	Saturday
00: 4 - 01: 3						
00: 5 - 01: 2						
00: 2 - 01: 1			Noon			
00: 21 - 01: 11						
00: 11 - 01: 01		Assembly				
05: 6 - 00: 6						
05: 8 - 00: 8						

No student is permitted to add or drop any subject or to change sections without presenting to his instructor a statement from the Dean's office authorizing the same.

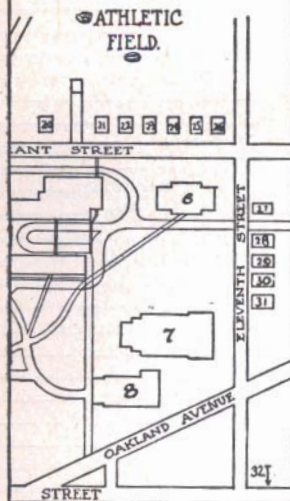


KEY TO BUILDINGS

State Teachers College, Indiana, Pa.

- | | |
|--|----------------------------|
| 1. Laboratory and Demonstration School | 7. Auditorium |
| 2. Wilson Hall - The College Library | 8. Gymnasium |
| 3. Leonard Hall | 9. Phi Sigma Pi Fraternity |
| 4. Arts Building | 10. Power House |
| 5. John Sutton Hall | 11. Shop Building |
| 6. Clark Hall | 12. Greenhouse |

Map Of The Campus



- | | |
|-----------------------------------|-------------------------------|
| 13. to 18. Boys Cottages | 27. Whitmyre Cottage |
| 19. Garages | 28. Learn Cottage |
| 20. Team House and Boys' Cottages | 29. Home Management House |
| 21. Hood Cottage | 30. Holic Cottage |
| 22. Jamison Cottage | 31. Home Management House |
| 23. Activities Cottage | 32. Phi Alpha Zeta Fraternity |
| 24. Vinton Cottage | 33. Sigma Tau Gamma |
| 25. Kunkle Cottage | |
| 26. Brant Cottage | |

INDEX

Absence and Tardiness	13
Activities - Organizations	87
Addresses	209
Advisory System	13
Alumni Association	8
Assemblies	14
Athletics	127
Athletic Award System	135
Athletic Board	131
Athletic Competition Regulations	132
Automobile Regulations—Men	83
Baseball Schedule	129
Basketball Schedule	128
Boxing Schedule	129
Bus Service	27
Cheerleaders	146
Cheers	154
Church Directory	26
Class Absence—Tardiness	13
Class Schedules	212
College Calendar	164
College Government	31
College Lodge	88
College Post Office	23
College Telephone Office	25
College Vesper Services	15
Cooperative Association, Student	40
Cultural Life Program	16
Curricula	15
Customs for Freshmen Men	84

Customs for Freshmen Women	76
Degrees	15
Dress for Men	83
Employment Service, Student	22
Entertainment Course	16
Faculty Addresses	203
Fire Drill	16
Fly Casting and Plug Casting Club	143
Football Schedule	128
Foreword	3
Fraternity Rush Regulations	90
General Information	9
Assistant Dean of Women	12
Assistant to the President and to the Dean of Instruction	12
Bursar	10
Central Treasurer	11
College Bookstore	12
Dean of Instruction	9
Dean of Men	10
Dean of Women	10
Director, Extension and Saturday Campus Classes	12
Director of Laboratory School	11
Director of Personnel	10
Director of Student Teaching	11
President	9
Registrar	9
General Information for Resident Women	52
Dining Room	66
Fire Regulations	63
House Rules	53

Miscellaneous Information	68
Social Privileges	59
Social Rooms	67
Infirmiry Health Service	65
Typewriters and Radios	66
Grading System	17
Application of Quality Points	18
Explanation of Grades	17
Quality Points	17
Health Service	20
History of the College	8
Identification	Inside Cover
Index	216
Infirmiry Health Service	20
Interfraternity Council	91
Intramural Sports	136
Library Information	20
Lodge, College	88
Lost and Found	22
Maps of Campus	214 - 215
Men's Lounge	83
Men's Student League	77
Men's Varsity "I" Club	138
Mileage Log from Indiana	28
Non-Resident Men's Student League	80
Non-Resident Women's League	70
Organizations	95
Alpha Omega	95
Alpha Phi Gamma	95
Alpha Sigma Alpha	96
Alpha Sigma Tau	97
American College Quill Club	98

Art Club	99
Biology Club	100
Camera Club	100
Class Officers	102
College Marching Band	101
College Choir	101
College Pilots' Club	101
College Symphonic Band	103
College Symphony Orchestra	103
Debate Club	104
Delta Sigma Epsilon	104
Edwin Arlington Robinson Club	120
Elementary Club	105
Gamma Rho Tau	106
Home Economics Club	107
Intercollegiate Conference on Govern- ment	107
International Relations Club	109
Junior Chamber of Commerce	109
Junior Choir	110
Kappa Delta Pi	111
Kappa Omicron Phi	111
Leonard Literary Society	112
Men's Glee Club	113
Music Educators Club	113
Newman Club	114
Open Forum	115
Panhellenic Association	115
Phi Alpha Zeta	117
Phi Sigma Pi	117
Pi Delta Theta	118
Pi Kappa Sigma	119

Pi Omega Pi	119
Secondary Education Club	121
Sigma Sigma Sigma	122
Sigma Tau Gamma	122
Theta Sigma Upsilon	123
Travel Club	123
Women's Choral Club	124
Y.M.C.A.	124
Y.W.C.A.	125
Placement Service	22
President's Message	7
Proms	120
Psycho-Educational Bureau	23
Radio Broadcasting	24
Regularly Scheduled Activities	158
Resident Women's League	44
Rifle Club	143
Scheduled Activities	158
Smoking Regulations, Men's Lounge	83
Songs	146
Schedule, Student Individual	212
Songs and Cheers	145
Student Advisory System	13
Student Co-operative Association	40
Student Council	33
Student Employment Service	22
Student Participation	32
Student Publications	92
Daily Bulletin	94
Indiana Penn	92
Oak	93
Scroll	94

Student Handbook	94
Teachers College Bulletin	94
Student Teaching, Eligibility for	8
Swimming Schedule	129
Table of Contents	2
Track Schedule	130
Tennis Courts	25
Tennis Schedule	130
Transfer of Credits	25
Varsity Sports	131
Vesper Service	15
Telephone Office	25
Winter Sports Club	142
Women's Athletic Association	141
Women's Sports	131
Women's Varsity "I" Club	139
Wrestling Schedule	129

MEMORANDA

MEMORANDA

MEMORANDA

CALENDAR 1941-1942

SEPTEMBER

S	M	T	W	T	F	S
--	1	2	3	4	5	6
7	8	9	10	11	12	13
14	15	16	17	18	19	20
21	22	23	24	25	26	27
28	29	30	--	--	--	--
--	--	--	--	--	--	--

OCTOBER

S	M	T	W	T	F	S
--	--	--	1	2	3	4
5	6	7	8	9	10	11
12	13	14	15	16	17	18
19	20	21	22	23	24	25
26	27	28	29	30	31	--
--	--	--	--	--	--	--

NOVEMBER

S	M	T	W	T	F	S
--	--	--	--	--	--	1
2	3	4	5	6	7	8
9	10	11	12	13	14	15
16	17	18	19	20	21	22
23	24	25	26	27	28	29
30	--	--	--	--	--	--

DECEMBER

S	M	T	W	T	F	S
--	1	2	3	4	5	6
7	8	9	10	11	12	13
14	15	16	17	18	19	20
21	22	23	24	25	26	27
28	29	30	31	--	--	--
--	--	--	--	--	--	--

JANUARY

S	M	T	W	T	F	S
--	--	--	--	1	2	3
4	5	6	7	8	9	10
11	12	13	14	15	16	17
18	19	20	21	22	23	24
25	26	27	28	29	30	31
--	--	--	--	--	--	--

FEBRUARY

S	M	T	W	T	F	S
1	2	3	4	5	6	7
8	9	10	11	12	13	14
15	16	17	18	19	20	21
22	23	24	25	26	27	28
--	--	--	--	--	--	--

MARCH

S	M	T	W	T	F	S
1	2	3	4	5	6	7
8	9	10	11	12	13	14
15	16	17	18	19	20	21
22	23	24	25	26	27	28
29	30	31	--	--	--	--
--	--	--	--	--	--	--

APRIL

S	M	T	W	T	F	S
--	--	--	--	1	2	3
4	5	6	7	8	9	10
11	12	13	14	15	16	17
18	19	20	21	22	23	24
25	26	27	28	29	30	--
--	--	--	--	--	--	--

MAY

S	M	T	W	T	F	S
--	--	--	--	--	--	1
2	3	4	5	6	7	8
9	10	11	12	13	14	15
16	17	18	19	20	21	22
23	24	25	26	27	28	29
30	31	--	--	--	--	--

JUNE

S	M	T	W	T	F	S
--	1	2	3	4	5	6
7	8	9	10	11	12	13
14	15	16	17	18	19	20
21	22	23	24	25	26	27
28	29	30	--	--	--	--
--	--	--	--	--	--	--

JULY

S	M	T	W	T	F	S
--	--	--	--	1	2	3
4	5	6	7	8	9	10
11	12	13	14	15	16	17
18	19	20	21	22	23	24
25	26	27	28	29	30	31
--	--	--	--	--	--	--

AUGUST

S	M	T	W	T	F	S
--	--	--	--	--	--	1
2	3	4	5	6	7	8
9	10	11	12	13	14	15
16	17	18	19	20	21	22
23	24	25	26	27	28	29
30	31	--	--	--	--	--

