

The
NORMAL HERALD

Published Quarterly by the State Normal School of Pennsylvania

SUPPLEMENT TO VOL. XXIV · No. 2

*Being the Book of Information
About the Indiana State Normal School
of Pennsylvania*

NINTH NORMAL SCHOOL DISTRICT

INDIANA · PENNSYLVANIA



EXPLANATORY FOREWORD



THIS BOOK OF INFORMATION about the Indiana State Normal School of Pennsylvania is issued to inform prospective students and their parents as to what kind of school it is. It is not intended that this book shall take the place of the annual catalog in any way. It therefore does not give catalog information. Full information as to faculty, trustees, courses of study, expenses, etc., is contained in the catalog which will be sent to any address on request. This book is designed to give a clear and accurate idea of the campus, the buildings, the executive arrangements, the commons, student rooms, the dining hall, student recreations, the infirmary, the conservatory of music, and student organizations, as these are related to and make possible the real work of a school. Young people are not only preparing to live; they are living a part of life while preparing—and Indiana seeks to make student life, day by day, a worth-while life. Having one of the most beautiful of locations, Indiana seeks to organize and conduct a school that is strong and healthy in its every requirement; a school which former students and alumni remember with satisfaction—a school that makes a real contribution to human welfare.

The Indiana School offers the following Courses:

1. THE REGULAR COURSE FOR TEACHERS, which graduates of four-year High School Courses may reasonably expect to finish in two years.
2. MUSIC COURSES:
 - a. Public School Music Supervisors' Course—two and three years beyond High School graduation.
 - b. Four-year courses in Piano, Violin, Organ, Voice.
3. COMMERCIAL COURSES:
 - a. Commercial Teachers' Course—two years beyond High School graduation.
 - b. A short course in Bookkeeping.
 - c. A short course in Stenography.
4. ART COURSES.
5. DOMESTIC SCIENCE COURSE, to train teachers for Public School work—two years beyond High School graduation.

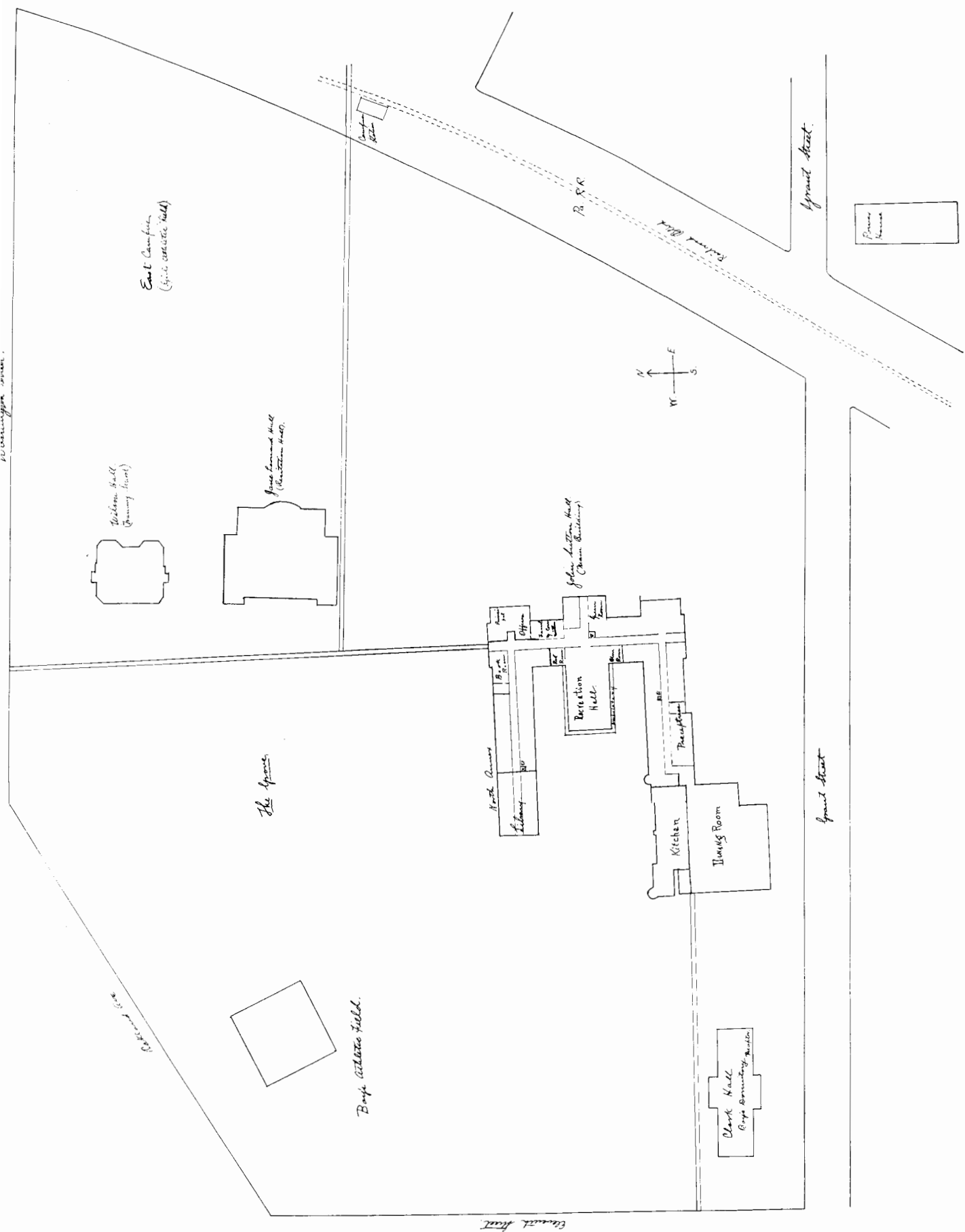
Send for the Annual Catalog if you desire complete information. Address

STATE NORMAL SCHOOL, INDIANA, PA.

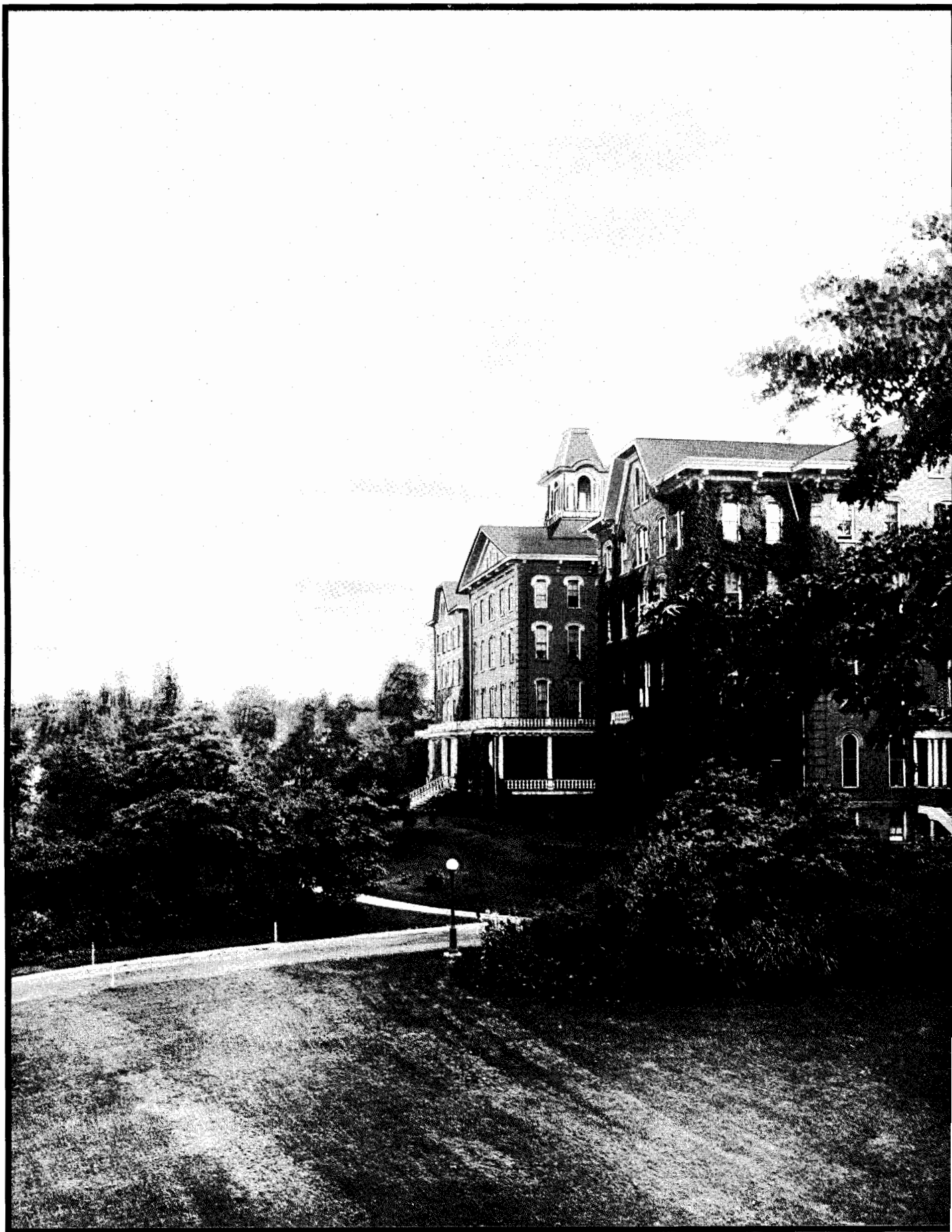


Jane E. Leonard

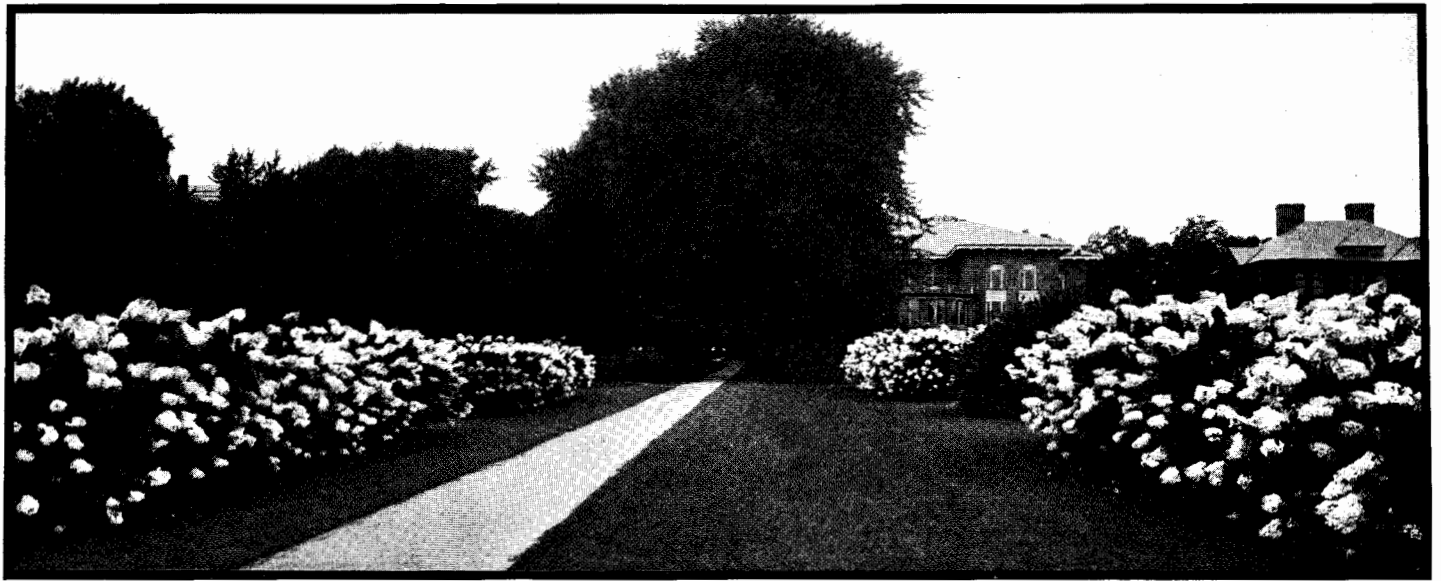
MISS LEONARD has been Preceptress at Indiana ever since the school opened its doors in 1875. She knows personally every graduate of the school and thousands of fathers and mothers. To her, more than to anyone else, is to be credited what is called "The Indiana Spirit and Culture." Inducements have come, but to Indiana she has been steadfast, devoted, and true; giving to this school the energy and refinement and idealism of her life.



A SKETCH OF THE GROUNDS
Showing the location of Buildings, Drives, Walks, Etc.



JOHN SUTTON HALL
as seen from the Northeast



The building just to the right of the walk is Leonard Hall, in which nearly all classes recite.
Farther to the right is Wilson Hall, the Training School



Students who arrive on the Pennsylvania Railroad get off at the Campus and follow this walk to the building (toward the West)



A view of the Northeast Campus from the Training School



Shrubbery Just to the Northeast of the Main Building



A Bed of Hydrangeas on the East Campus



These Greek Seats are on the North Campus just West of Wilson Hall and Form an Entrance into the Oak Grove (Shown Below)



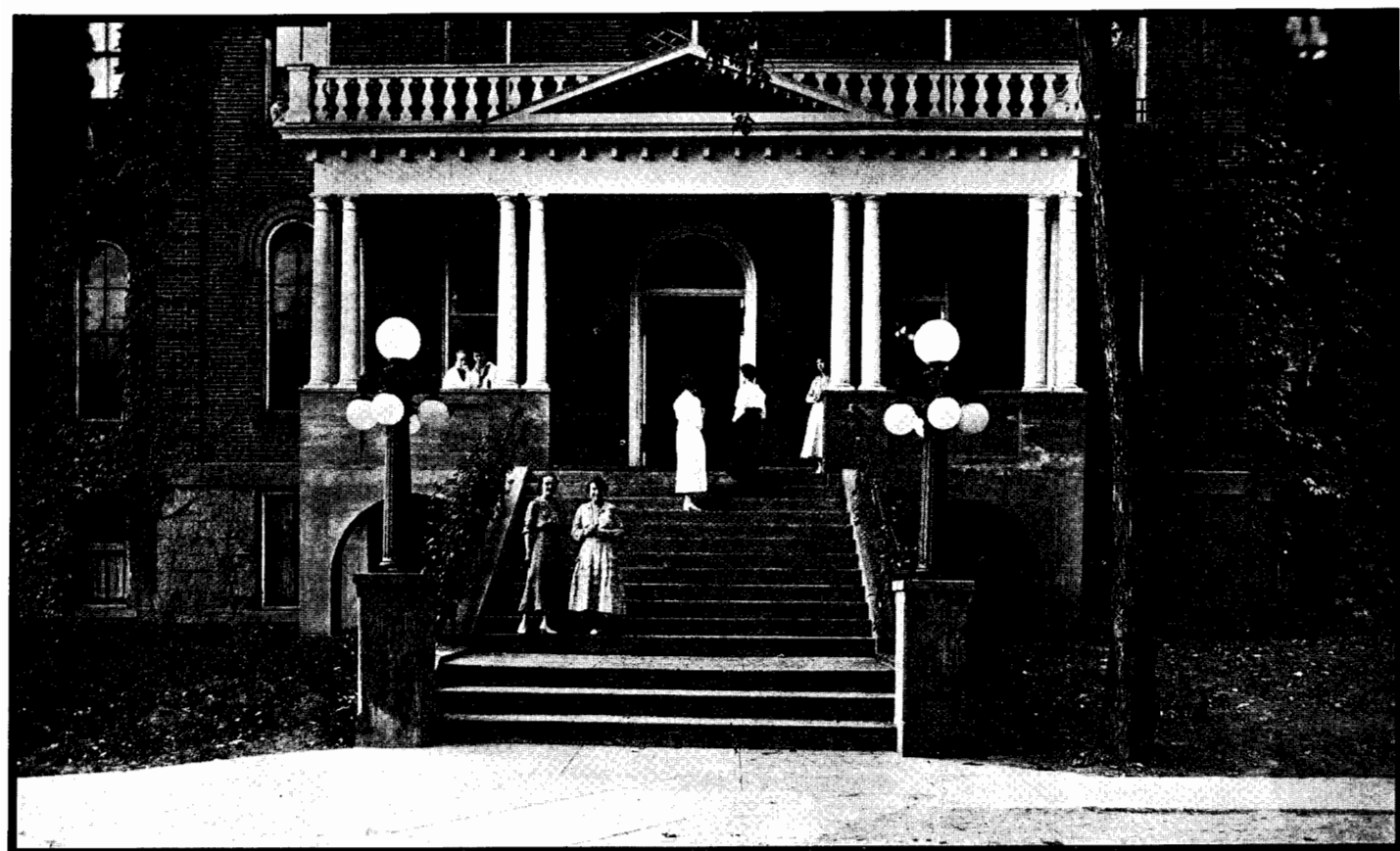
The Boys' Walk Through the Oak Grove from Leonard Hall to the Boys' Dormitory (Looking Southwest)



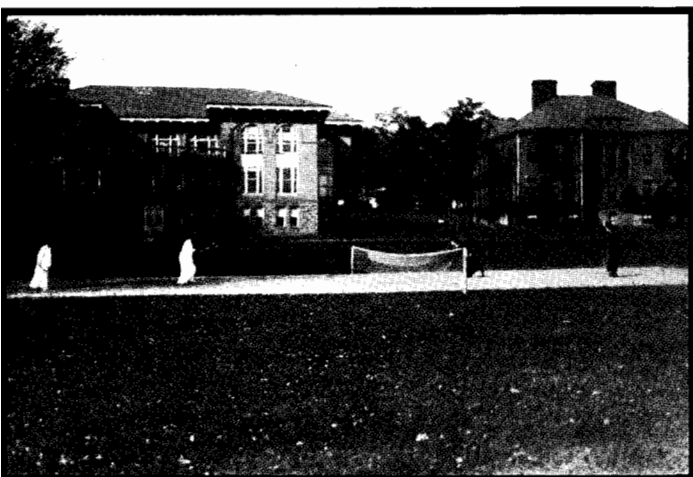
On the North Campus



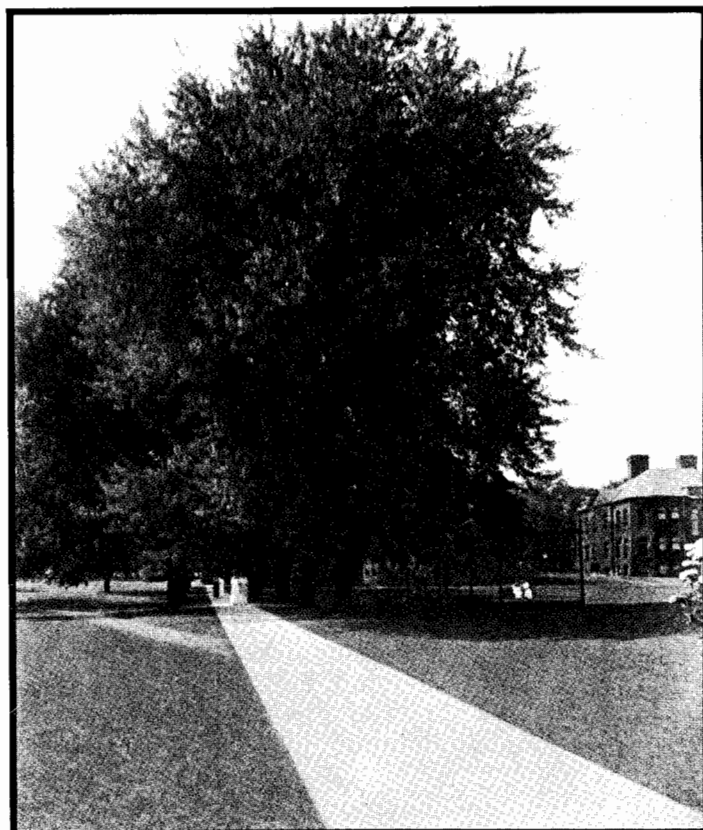
Model School and Recitation Building



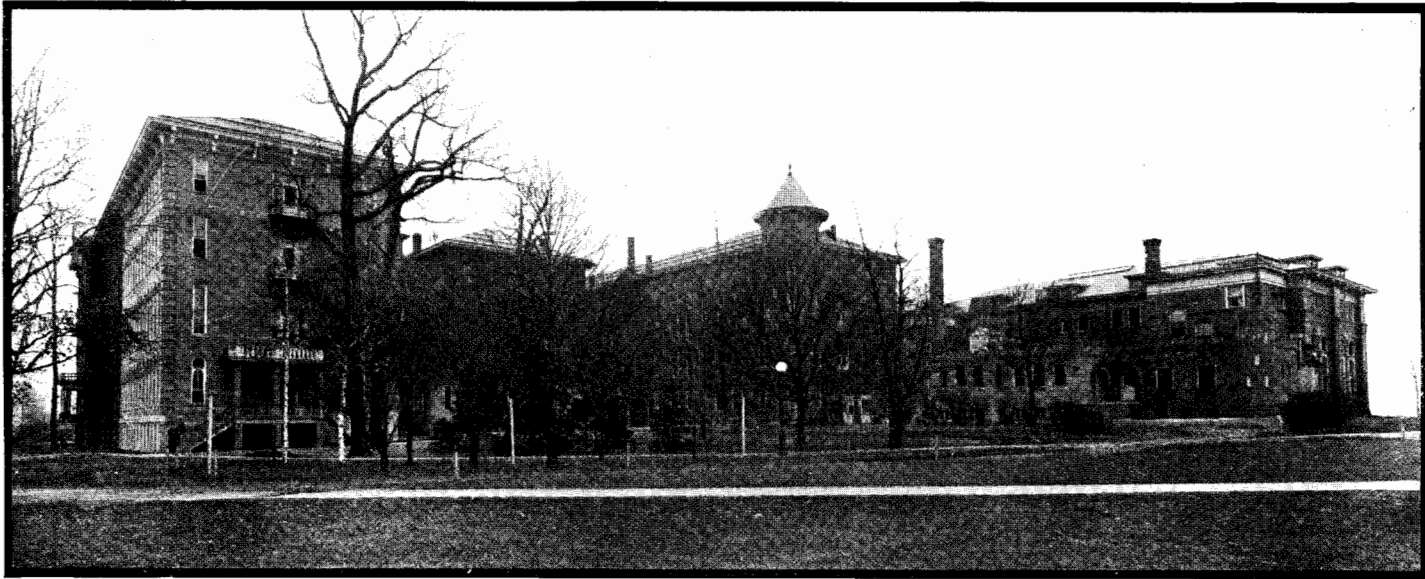
The North Entrance



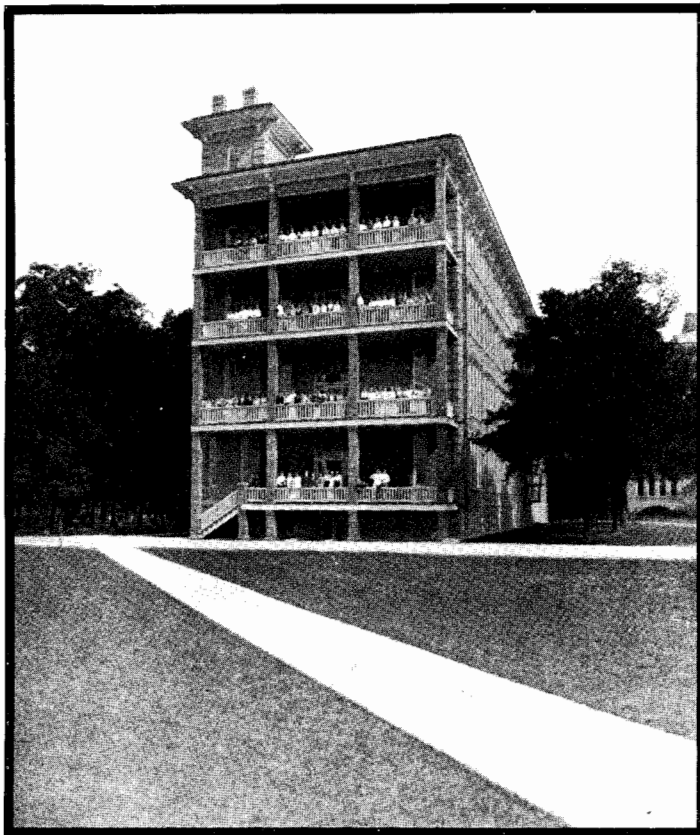
Girls' Tennis Court



From the East Gate



A General View of the Main Buildings from the Northwest (i. e. from the Boys' Athletic Field)



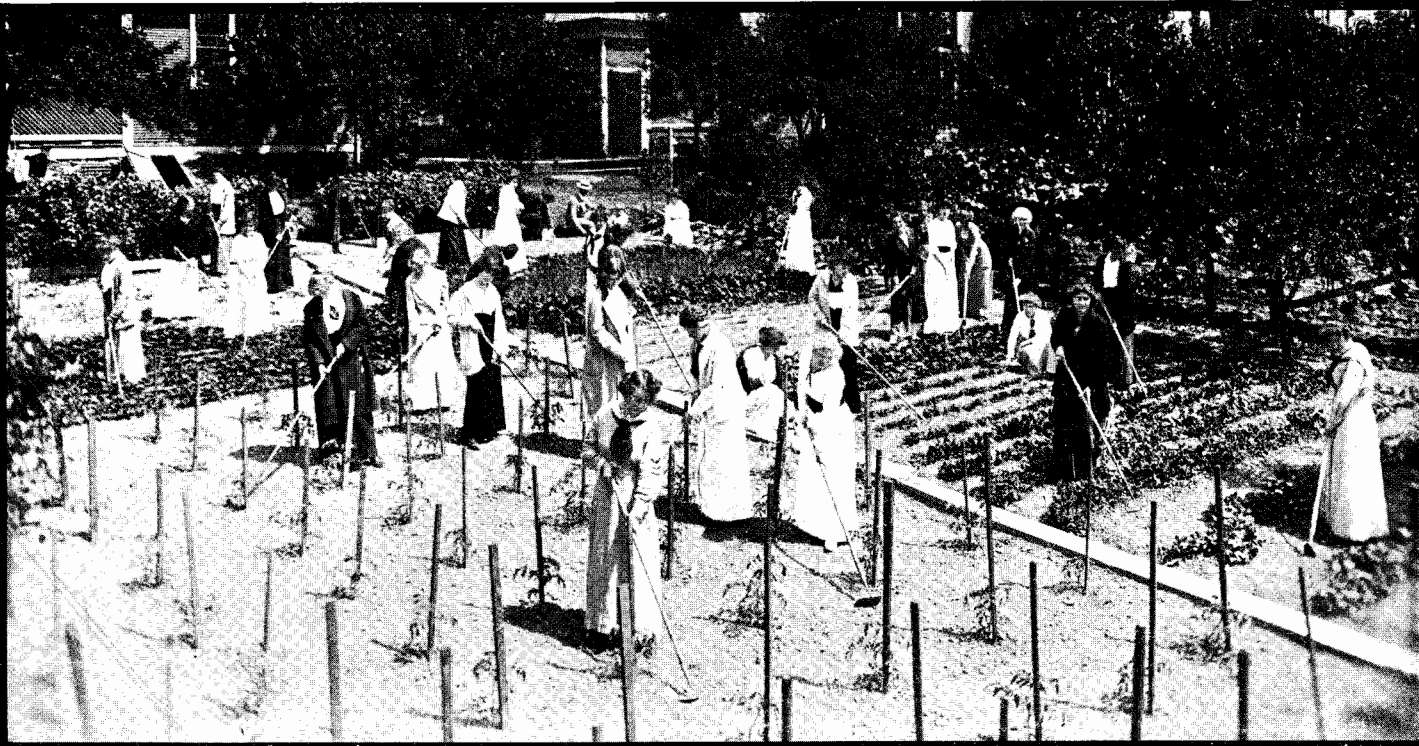
This Building, the New Annex, has recently been added to the Building shown just above it



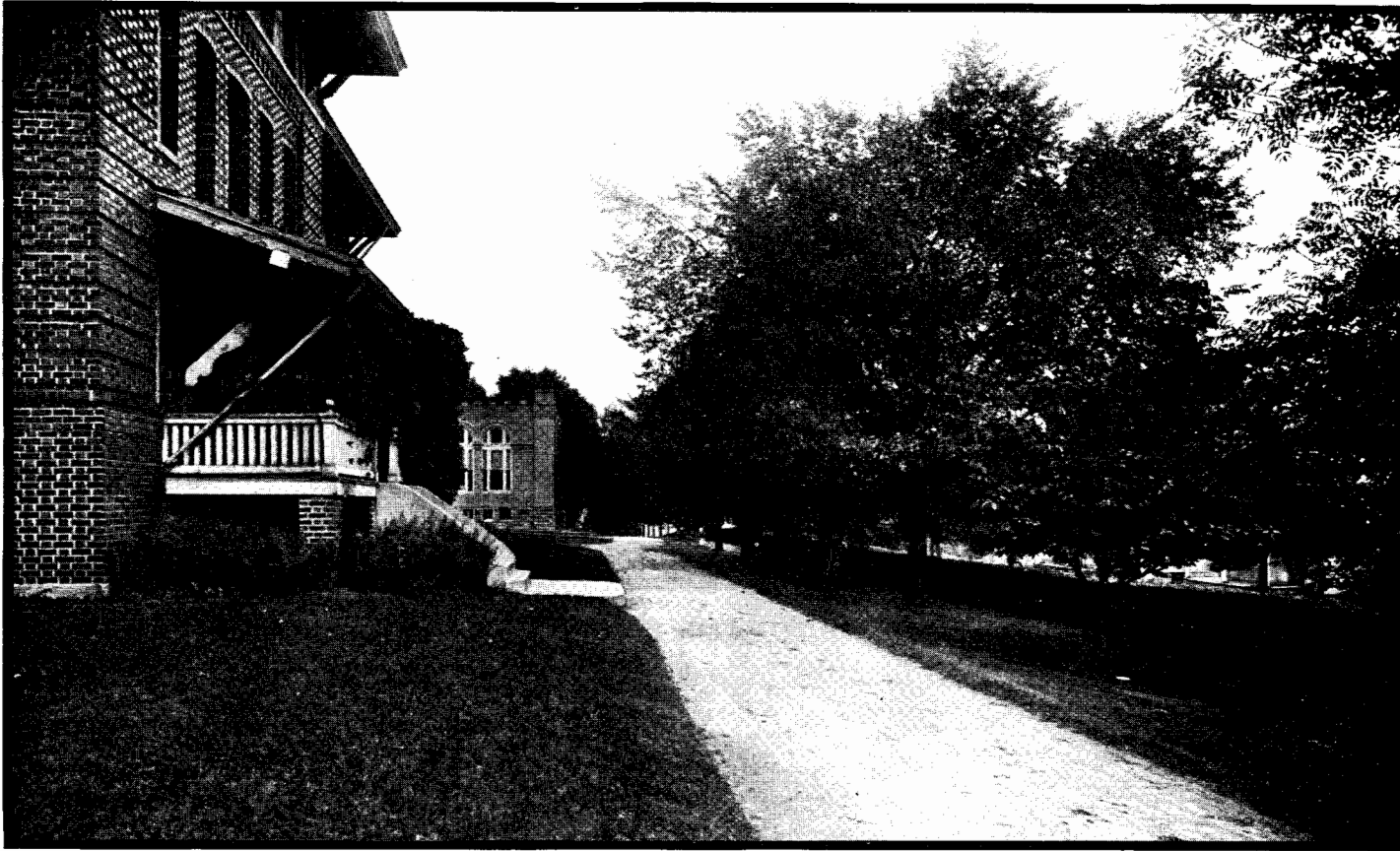
This shows the Balconies of the South Annex Hall. (Conservatory and Dining Hall in the Rear)



Hollyhocks between the Boys' Dormitory and the Dining Hall



A Class in the School Garden - producing Wealth, Health and Knowledge



Looking East and Past the South Side of Clark Hall, the Boys' Dormitory, to Thomas Sutton Hall in Which are the Dining Hall and Conseratory



A Bend in the Road—East Campus, Looking South



The Boys' Athletic Field—Looking North from the Boys' Dormitory. Indiana Stands for Clean, Manly, Wholesome Athletic Sports



The Hockey Field



A Typical "Swing Out Day," on the Girls' Athletic Field—Northeast Campus



This Building, Wilson Hall, is entirely devoted to the uses of the Model Department. A Complete School of Nine Grades is Maintained.
Seniors Learn to Teach by Teaching Under Skilled Supervision



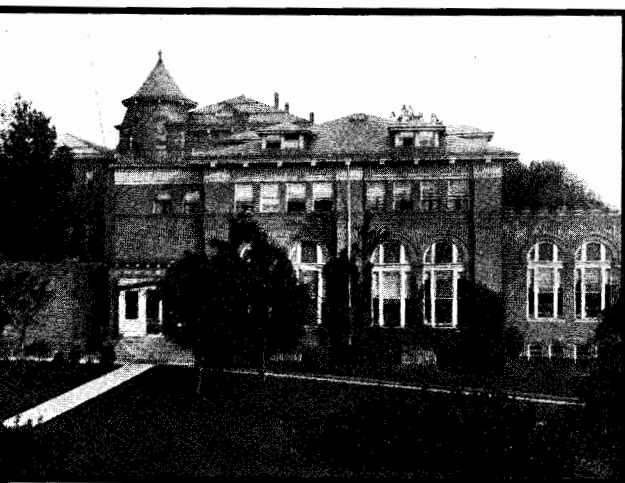
Leonard Hall is the Recitation Building for Normal Department Students



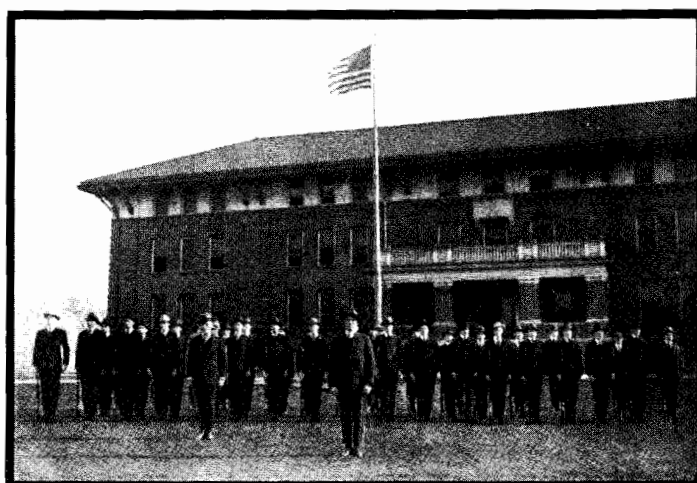
Model School Children at Play on the Greek Seats and Terrace



Recreation Hour on the East Campus



A Closer View of Thomas Sutton Hall



In Front of the Boys' Dormitory—Soon after Our Country Entered the War



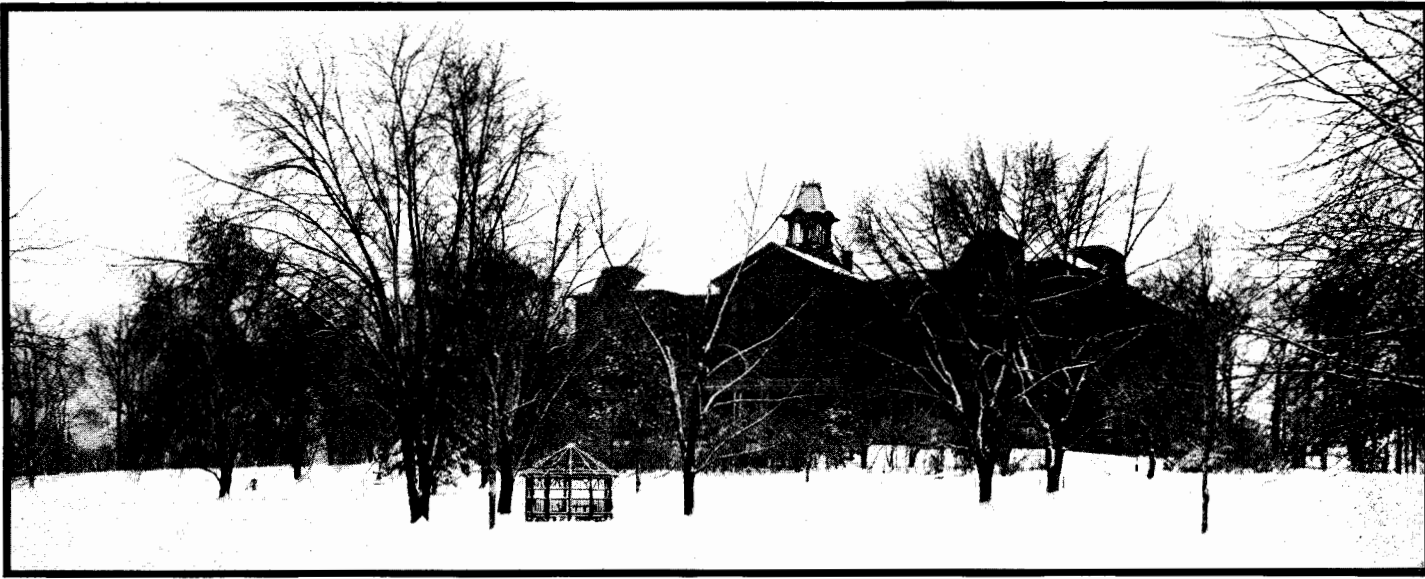
It Sometimes Snows in Indiana



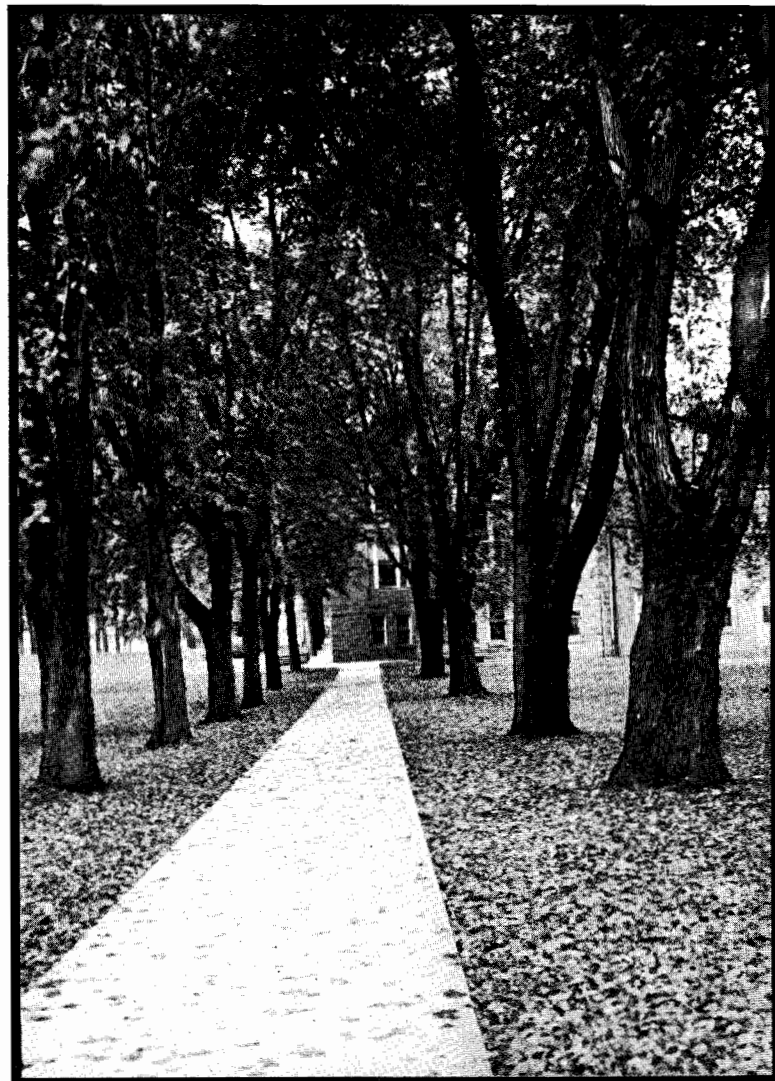
Path Makers



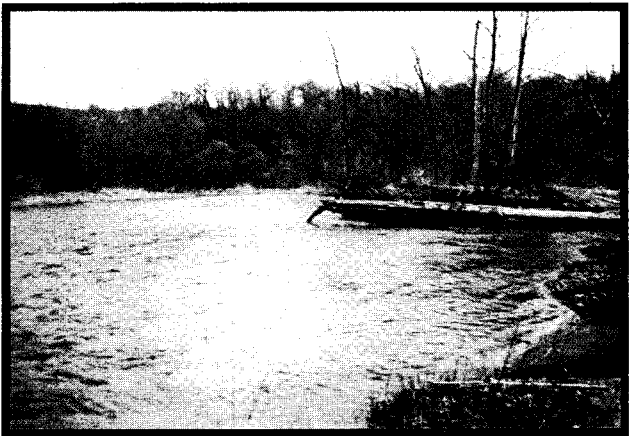
The Pennsylvania Trains Stop at the East Campus Gate



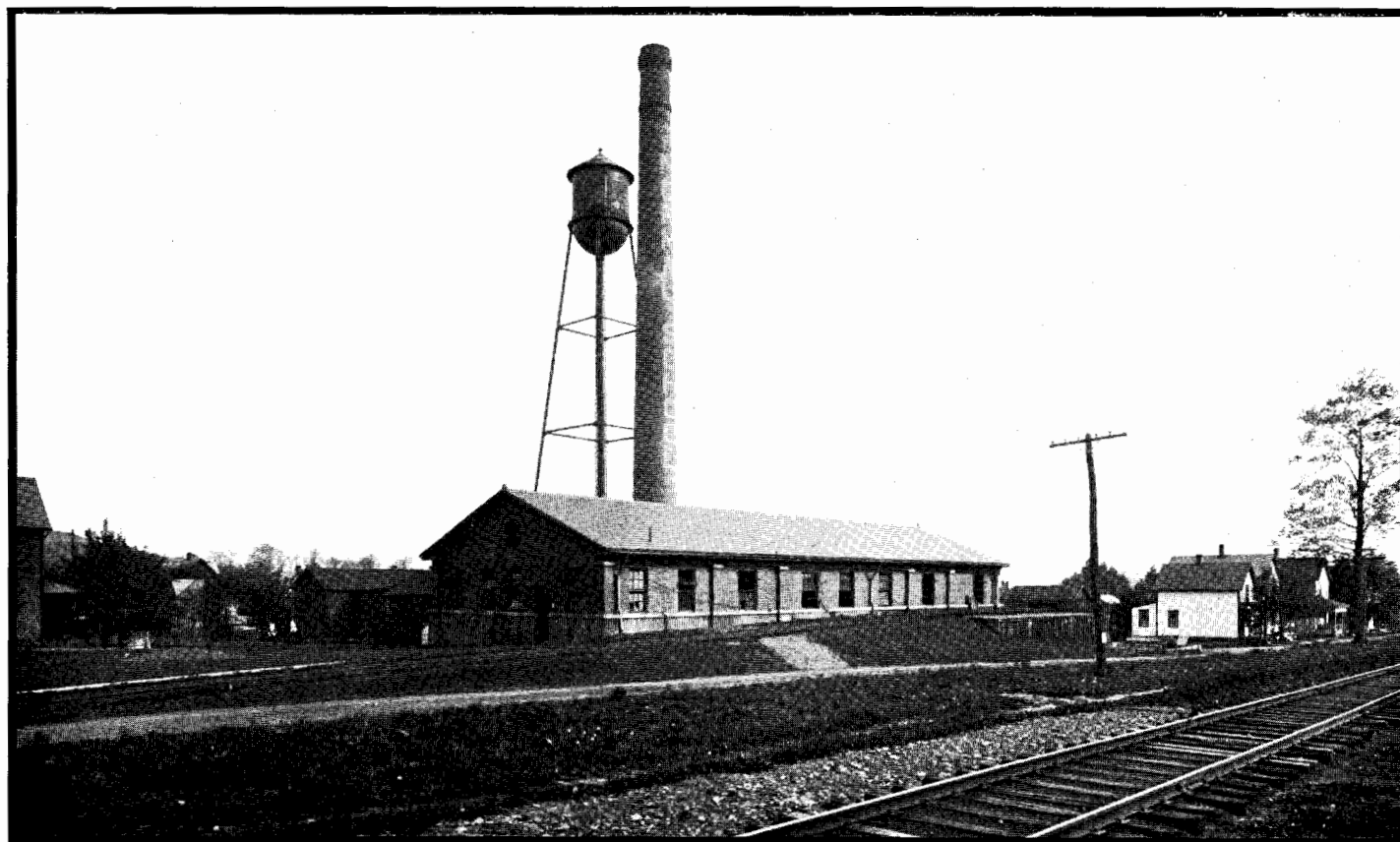
John Sutton Hall from the East in Winter



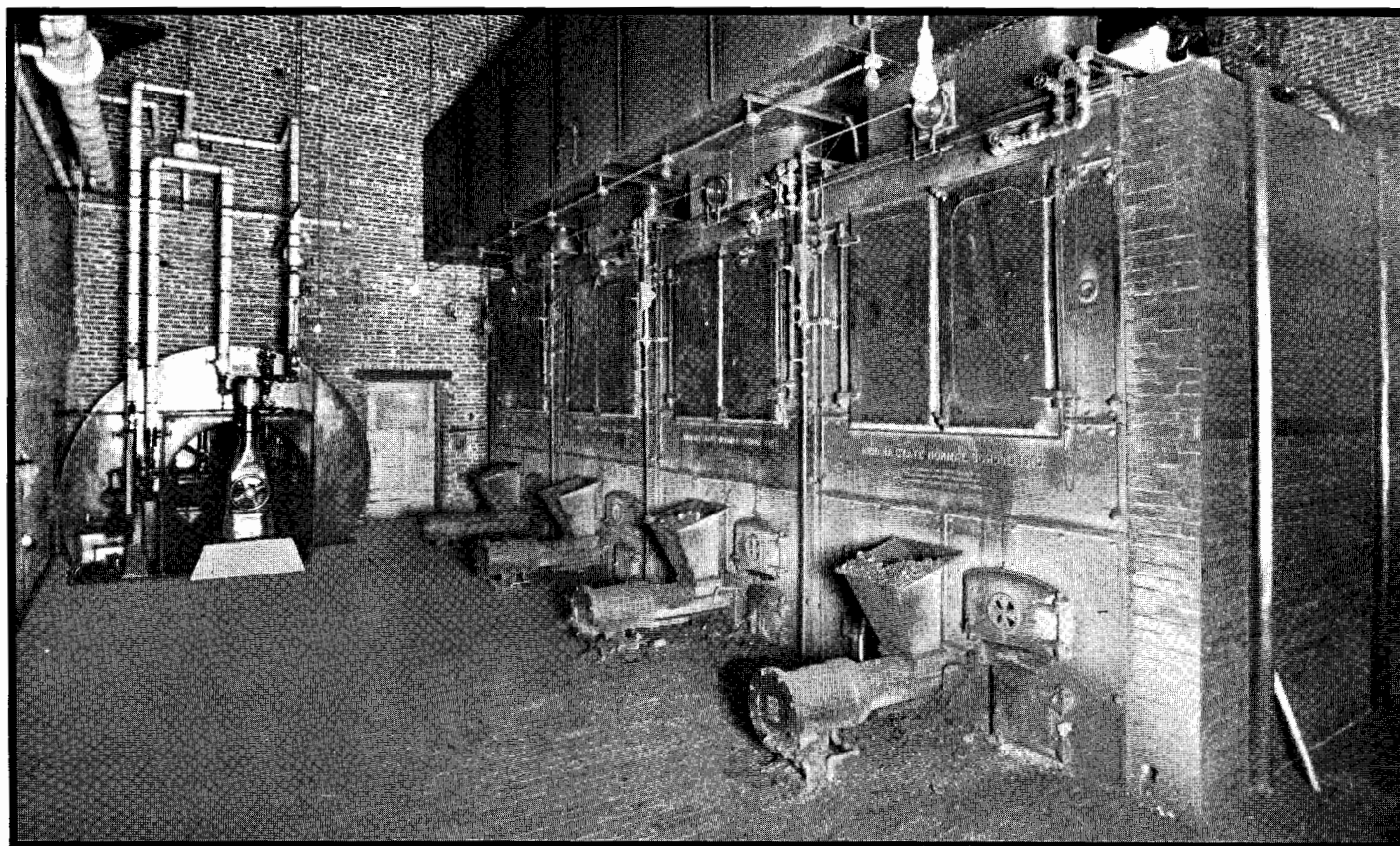
The First Fall of Maple Leaves



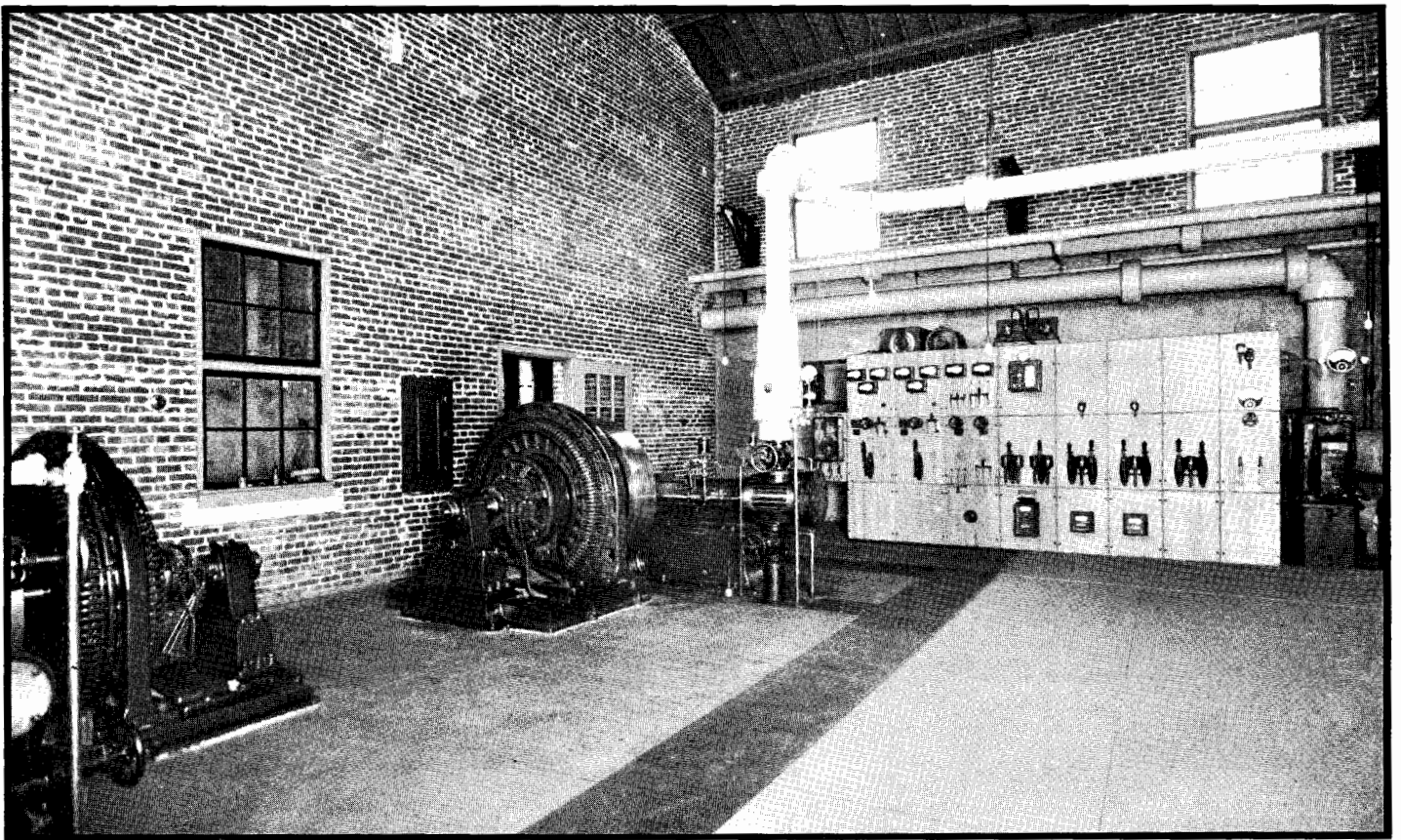
Some Beauty Spots Within Easy Walking Distance of Indiana



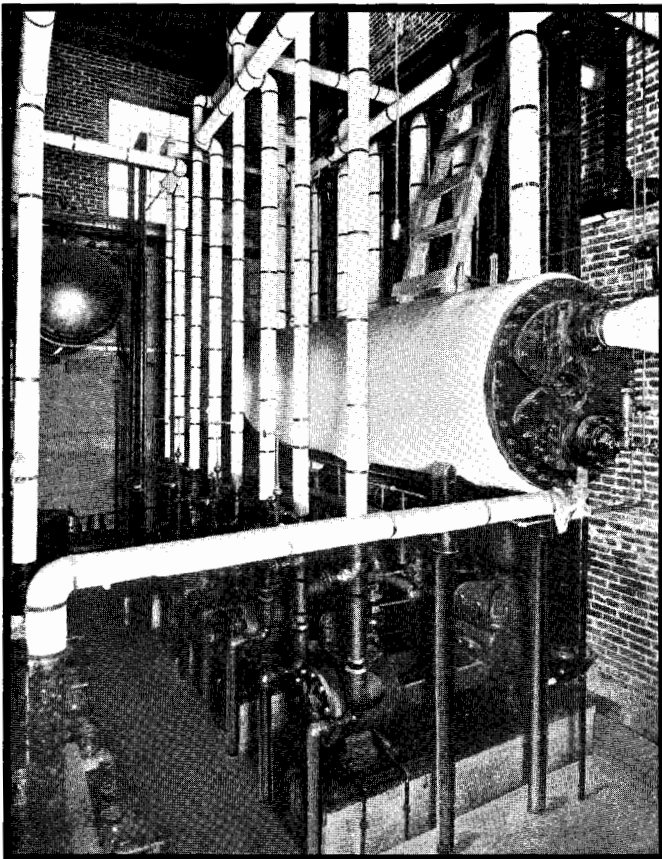
The School's Power Plant is Complete in Every Particular



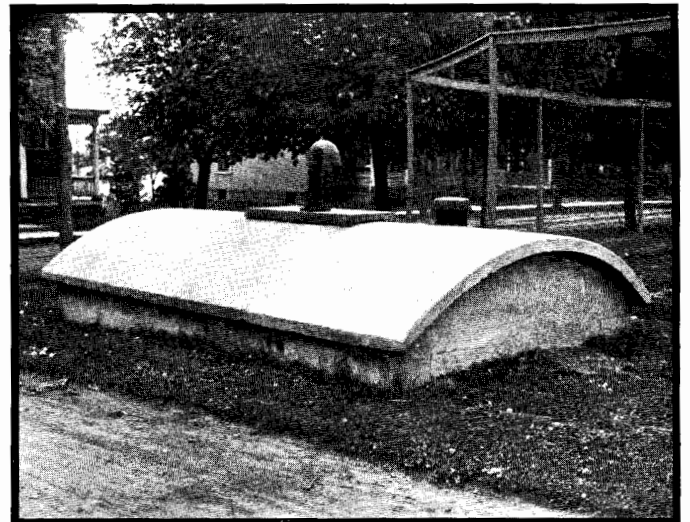
This Battery of Boilers is the Source of the School's Heat, Light and Power



These Electric Generators Furnish the Light and Power



These Pumps Fill the Huge Water Tank



From Such Deep Wells, the School's Supply of Water is Drawn