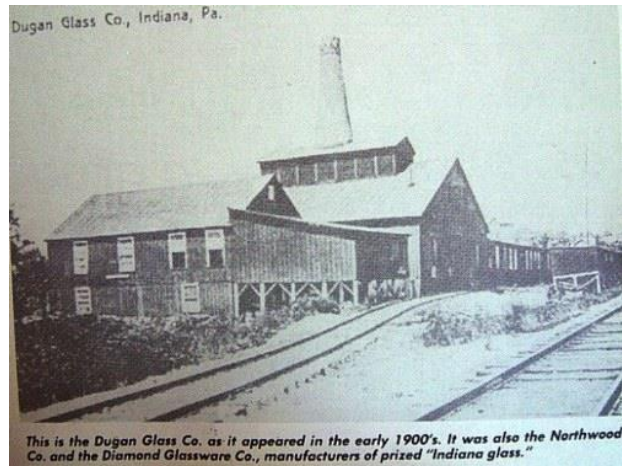




Special Collections and University Archives

---

**Manuscript Group 173**  
**Indiana Glass and the Glass Companies of Indiana, Pennsylvania**



Opalescent Glassware produced by the Dugan Glass Company in Indiana, Pennsylvania, circa 1904-1913  
Postcard of the Dugan Glass Company, courtesy of the [Indiana Gazette \(July 28, 1984\)](#)

**For Scholarly Use Only**  
**Last Modified October 18, 2021**

---

**Indiana University of Pennsylvania**  
**302 Stapleton Library**  
**Indiana, PA 15705-1096**  
**Voice: (724) 357-3039**  
**Fax: (724) 357-4891**

**Indiana Glass and the Glass Companies of Indiana, Pennsylvania, Manuscript Collection 173  
Indiana University of Pennsylvania, Special Collections and University Archives  
2 boxes; 2 linear feet**

**Historical Note**

Between 1892 and 1931, five different glass companies manufactured what has become known as Indiana Glass in the same factory building in Indiana, Indiana County, Pennsylvania. Not to be confused with Indiana Glass made in Dunkirk, Indiana, the glass companies based out of Indiana, Pennsylvania included the Indiana Glass Company, 1892-1896; Northwood Glass Company, 1896-1899; the Northwood Works of the National Glass Company of Pittsburgh, 1899-1904; the Dugan Glass Company, 1904-1913; and the Diamond Glassware Company, 1913-1931. The Indiana glassworks factory was built along the railroad line at the location of the former State Experimental Farm near the present location of the Miller Stadium and the Eberly College of Business parking lot at Indiana University of Pennsylvania. It was at this factory in 1897 where Northwood Glass Company owner Harry Northwood first made opalescent or translucent pressed glassware in the United States, which originated in England in the 1870s.

According to Indiana County historian Clarence Stephenson, glassware, vases, dishes, and many other items made from glass in colors ranging from white to pastels are recognized as prized Indiana Glass. The story of Indiana glassware began on January 1, 1892 when a group of Indiana community leaders met in the office of attorney and former state senator George W. Hood to consider a proposal by a visiting glass expert Mr. Nevill, who had patented pressed glass molds. Nevill recommended that a glass factory be built to manufacture glass in Indiana, Pennsylvania. After the meeting, \$35,000 in stock was raised to form the Indiana Glass Company.

The Indiana Glass Company was formally organized on January 28, 1892 with the following directors Harry White, W.B. Marshall, Griffith Ellis, Thomas Sutton, John S. Hastings, H.W. Wilson, and Delos A. Hetrick. Harry White was elected president and authorized capital stock to be increased to \$50,000. The Indiana glass factory was located on the old State Experimental Farm. The Indiana Glass Company was incorporated on April 14, 1892. It cost \$29,000 to build and equip the factory, however, the Indiana Glass Works was not a financial success. After three years, it was sold at the Sheriff's sale in October 1895.

English immigrant Harry C. Northwood (1860-1919) founded the Northwood Glass Company. His father, John Northwood, was an innovator in acid etching of glass and inventor of a template machine for decorating. John Northwood also invented a glass crimping device and designed different patterns or motifs to be made with hot pressed glass molds. After having worked as a glass etcher for the Hobbs-Brochunier Plant in Wheeling, West Virginia, Harry Northwood went onto establish glass factories in Martins Ferry, Ohio, 1888-1893; Ellwood City, Pennsylvania, 1894-1895; Indiana, Pennsylvania, 1896-1899; and later the H. Northwood & Co., which operated out of the old Hobbs-Brochunier Plant in Wheeling, West Virginia, from 1901 to 1925.

In February 1896, Harry Northwood leased the glass plant in Indiana, Pennsylvania, and it became known as the Northwood Glass Company. Glass production resumed in Indiana, Pennsylvania, on March 25, 1896. Northwood employed his cousin Thomas E. A. Dugan (1865-1944) as Indiana plant foreman, whose father and younger brothers had also emigrated from England and worked with Harry Northwood. By February 1897, Harry Northwood had considered moving his

glassworks to Blairsville, Pennsylvania. But in 1898, an agreement was reached with the Indiana Borough Council, so that Thomas Dugan, and Harry and Clara Northwood could purchase the Indiana factory for the Northwood Glass Company and keep the company in Indiana. On September 4, 1899, the Northwood Glass Company was sold to the National Glass Company of Pittsburgh. Thomas Dugan remained in charge of the Indiana factory, and he operated the Northwood Works of the National Glass Company at the Indiana site from 1900-1904. In 1904, Thomas E. A. Dugan and several investors, purchased the Indiana factory and created the Dugan Glass Company, which operated in Indiana until 1913.

The Dugan Glass Company produced carnival glass from 1909-1913 and introduced designs including the Farmyard bowls, Butterfly & Tulip, Wishbone & Spades, Four Flowers, Wreathed Cherry, Apple Blossom Twigs, and Persian Gardens. Most Indiana Glass is unmarked, but [Dugan glassware used the Diamond "D" trademark](#). On February 5, 1912, a fire caused \$20,000 in damage to the Indiana factory mold shop and destroyed many expensive glass patterns. In 1913, Thomas Dugan sold the Indiana factory to the Diamond Glassware Company and moved his company to Lousconing, Maryland.

From 1913 to 1931, the Indiana factory was operated by the Diamond Glassware Company, which produced carnival glass using many molds and patterns originally created by Thomas E. A. Dugan. Diamond Glassware Company also introduced new patterns including the Stork in Rushes, Peacock at the Fountain, Windflower, Double Stemmed Rose, Weeping Cherry, and Pony and Golden Harvest. The company continued to produce carnival glass during World War I and into the Great Depression, but disaster struck on June 27, 1931, when a fire destroyed most of the factory including the stockroom and \$30,000 of finished glassware. The total loss to the Diamond Glassware Company was \$100,000, and the Indiana glass factory closed permanently. The building was razed and the property was later purchased by Indiana University of Pennsylvania.

For more information:

- Hartung, Marion T. (1969). *Northwood Pattern Glass in Color, clear, colored, custard, and carnival*. Call Number: NK 5112 .H34 Special Collections
- Burns, Carl O. (1998). *Dugan & Diamond Carnival Glass, 1909-1931*.
- Heacock, William, Measell, James, and Wiggins, Berry. (1993). *Dugan/Diamond: The Story of Indiana, Pennsylvania, Glass*.
- History of the Northwood Glass Company, <http://theantiquarian.us/Hist.%20Northwood.htm>
- Clarence Stephenson, "A look at the Dugan Glass Plant," *Indiana Gazette (July 28, 1984)*, and <http://www.carnivalheaven.com/carnivalglass101/id89.htm>
- Diamond Glass Company, <http://www.carnivalheaven.com/carnivalglass102/id241.htm>

### Scope and Content

This collection is organized in two series; Series I contains photocopies of information from newspaper advertisements and catalog brochures about "Indiana Glass" that was produced by Indiana Glass Company, Northwood Glass Company, Dugan Glass Company, and later the Diamond Glassware Company at the same factory in Indiana, Pennsylvania. The collection has eight pieces of clear and opalescent pressed glassware made in Indiana between 1892 and 1931. Series II contains glassware donated by Carol Buterbaugh and made by Northwood Glass Company; Dugan Glass Company; and Diamond Glassware Company – at the same factory in Indiana, Pennsylvania.

### Provenance

Series I Unknown; Series II donated by Carol Buterbaugh.

### Restrictions

No restrictions, this collection is available for research.

### Processed

This collection was processed by Harrison Wick and the finding aid was created on October 18, 2021.

### Series List

**Series I: Glassware from Glass Companies in Indiana, Pennsylvania (provenance unknown) 2 Boxes**

**Series II: Glassware from Glass Companies in Indiana, Pennsylvania donated by Carol Buterbaugh (2020-2021) 15 Boxes stored at IUP (shared in collaborative agreement with the Historical and Genealogical Society of Indiana County)**

### Content List

#### Series I

##### Box 1 (3 folders and 6 pieces of pressed glassware)

1. Advertisements and Catalog brochures of Indiana glassware (photocopies)
  - a. Indiana Glass Company, 1892
  - b. The Northwood Company of Indiana, Pennsylvania, 1899
  - c. Dugan Glass Company of Indiana, Pennsylvania
  - d. Diamond Glassware Company, Indiana, Pennsylvania, 1914 and 1922
2. Background information about glass companies in Indiana, Pennsylvania
  - a. Northwood Glass Company (1896-1899)
  - b. Dugan Glass Company (1904-1913) and [Thomas Dugan](#) (1865-1944)
  - c. Diamond Glassware Company (1913-1931)
3. "The Story of Northwood/Dugan/Diamond: Fragile Fragments" by Vicky Lynn Barrell, 1994

##### Pressed Glassware (6 pieces)

4. Clear pressed glass punch bowl with three fruit design including grapes and cherries (6x12x12 inches), no markings, possibly Northwood Glass Company, circa 1896-1899



5. Opalescent pressed glass Swan dish (4x5x4 inches), identified as Dugan Glass Company with [Diamond "D" trademark](#), circa 1904-1913



6. Clear pressed glass pitcher (5x4x4 inches) with opalescent floral pattern over Apple Blossom design, probably Northwood Glass Company, circa 1898, no markings (left)
7. Milk glass pitcher (5x4x4 inches) with painted Apple Blossom design (possibly made with the same mold as item 5), Northwood Glass Company or Dugan Glass Company, after 1898, no markings (right)



8. Clear pressed glass dish with floral wreath pattern and crimped opalescent design (2.5x8x8 inches), Northwood Glass Company or Dugan Glass Company, no markings, circa 1896-1913



9. Opalescent pressed glass basket with floral pattern (5x7x9 inches), no markings, probably Dugan Glass Company or Diamond Glassware Company, circa, 1904-1913 or 1913-1931



**Series I****Box 2 Pressed Glassware (2 pieces)**

1. Milk glass bowl with oak leaf pattern (4x8x8 inches), no markings, possibly Northwood Royal Oak pattern pressed glass (Hartung, 1969, p. 53), Northwood Glass Company, circa 1896-1899 (left)
2. Clear pressed glass handled lunch plate and painted rim with floral pattern (4x12x12 inches), possibly Dugan Glass Company or Diamond Glassware Company, no markings, circa 1904-1913 or 1913-1931 (right)



**Series II: Glassware made in Indiana, Pennsylvania, donated by Carol Buterbaugh  
Boxes 1-15 (see Excel Document)**

**Box 1 Pieces (0001-0006)**

1. (0001) Northwood / Alaska shallow pitcher. Part of Alaska table set. White opalescent glass. Square base. Horizontal line design on sides. Branch motif on handles and feet. 1897, dimensions 3.25" H 4.5" W 4.5" D, related to (0002)
2. (0002) Northwood / Alaska dish. Part of Alaska table set. White opalescent glass. Square base. Horizontal line design on sides. Side edges have branch motif. 1897, dimensions 3.25" H 6.25" W 4" D, related to (0001)
3. (0003) Carnival glass (marigold) flower frog. Cylinder with domed top. Eight holes appear on the domed top. No date, dimensions 1.5" H 2.5" W 2.5" D
4. (0004) No. 566 pump. White opalescent glass pitcher. Northwood creamer. Tree trunk/branch motif. Cylindrical body on four legs. Ruffled edge with stamped design. Handle affixed to one side. Opposite side has a decorative spigot. Part of Northwood creamer and sugar set. No date, dimensions 6.75" H 4.5" W 3.75" D, related to 0005
5. (0005) No. 567 trough. White opalescent glass dish. Northwood sugar. Tree trunk motif. Cylindrical trough with four feet. Dimensions 2.25" H x 5" W x 2.75" D, related to piece 0004
6. (0006) Crystal cut glass vase. Hexagonal base. Conical interior with hexagonal, tapering walls. Cut glass design on edges of vase (including star pattern). 1914, dimensions 10.5" H x 4" W x 4" D

**Box 2 Pieces (0007-0015) – note Pieces (0016-0031) are in the HGSIC Collection**

1. (0007) Blue opalescent Klondyke candy dish. Circular dish supported by three feet. Horizontal bands design. Ruffled rim. 1897, dimensions 3.5" H x 7.5" W x 7.5" D
2. (0008) Blue opalescent Intaglio (no. 0235) jelly compote. Circular bowl, stem, clover shaped base. Compote is decorated with floral and leaf motif. Ruffled rim. 1898, dimensions 5" H x 5" W x 5" D
3. (0009) Blue opalescent covered bon bon/ candy dish. Base with dish suspended on stem. Lid with raised dome shaped knob. Vertical indentations throughout. Gold trim along upper edge of dish and edge of base. No date, dimensions 6.5" H x 5.5" W x 5.5" D. Note, there are two pieces, a base and lid.
4. (0010) Green glass jar with lid. Cylindrical body with three horizontal bands. Floral decorations in yellow, orange, and white. Remnants of gold leaf. Lid with slightly pointed knob. Lid shows upper edge of dish and edge of base. No date, dimensions 8.5" H x 5" W x 5" D. Note, there are two pieces, a base and lid.
5. (0011) Blue opalescent glass candy dish shaped as a swan. The swan head is slightly clouded. Possibly carnival glass. No date, 4" H x 4.5" W x 3" D
6. (0012) Green opalescent bowl. Bowl with interlocking geometric pattern and ruffled edge. Floral shaped foot. No date, dimensions 3.25" H x 7" W x 7" D
7. (0013) Green glass diamond victory serving plate. Circular plate divided into 5 sections using short walls. Radiating line design. 1928, dimensions 1" H x 10.25" W x 10.25" D
8. (0014) Green opalescent pitcher. Victor (Jeweled Heart) style. Circular base, cylindrical body with heart and dot designs. Edge decorated with beaded trim. No date, dimensions 8.75" H x 8.5" W x 5.5" D
9. (0015) Opalescent green vase in diamond spearhead design. Cylindrical vase with cut glass bottom and ruffled rim. 1901, dimensions 6" H x 3.64" W x 3.75" D

**Box 3 Pieces (0032-0041b)**

1. (0032) Northwood's Maple footed jelly compote in light green opalescent glass. Suspended on three twig stem. No date, dimensions 4.25" H x 5" W x 5" D
2. (0033) Light green opalescent glass rose bowl. Ruffled edge. Suspended on three scrolled feet. No date, dimensions 5.25" H x 5.75" W x 5.75" D
3. (0034) Light green glass decorated with pink, white, and green enamel. Vertical indents on interior. No date, dimensions 4" H x 3" W x 3" D. Note, two of the same pieces.
4. (0035) Light green opalescent glass ruffled dish with two handles. Shallow dish. Molded leaf pattern. No date, dimensions 3.5" H x 7.75" W x 6.75" D
5. (0036) Northwood Tree trunk vase in light blue opalescent glass. Ruffled rim. No date, dimensions 11" H x 4" W x 4" D
6. (0037) Northwood Tree trunk vase in clear glass. Ruffled rim. No date, dimensions 11.75" H x 4.25" W x 4.25" D
7. (0038) Palisades fluted vase in opalescent green. No date, dimensions 3.5" H x 6.25" W x 6.25" D
8. (0039a) Light green lid. Gilded knob and edge. Enameled floral designs in yellow, orange, purple, green, and black. Fits on base of similar design. No date, dimensions 2.5" H x 4.5" W x 4.5" D
9. (0039b) Light green bowl with gold band around upper edge. A lid with enameled flowers fits on top. No date, dimensions 2.5" H x 4.5" W x 4.5" D



10. (0039c) Light green glass bottle. Small urn-shaped bottle with circular base. Enameled floral designs in yellow, orange, purple, green, and black. Four vertical gold bands. A stopper fits on top of the bottle. No date, dimensions 4.5" H x 2" W x 2" D
11. (0039d) Light green glass stopper topped with a knob painted gold. Fits onto small bottle with similar design. 2" H x 1.5" w x 1.5" D
12. (0040) Dugan's Diamond Maple Leaf creamer with silver filigree on emerald green glass. 4.25" H x 6.5" W x 4.5" D
13. (0041a) Cobalt blue bottle with white enameled flowers and a vertical gold band. Urn shaped bottle topped with metal spout of some kind. A metal lid fits over the metal spout. 4.25" H x 3" W x 3" D. Note, contains powdery material.
14. (0041b) Metal lid that fits over the metal spout on 0041a. No date, dimensions 1" H x 2" W x 2" D. Note, mild rust overall.

**Box 4 Pieces (0042a-0051) – note Pieces (0052-0073) are in the HGSIC Collection**

1. (0042a) Beaded Shell (New York). Large bowl (berry bowl) in cobalt blue glass. Decorated with gold paint. 1904, dimensions 5.75" H x 8.25" W x 8.25" D
2. (0042b) Beaded Shell (New York). Small bowl (sauce bowl) in cobalt blue glass. Decorated with gold paint. 1904, dimensions 2.5" H x 4.5" W x 4.5" D
3. (0042c) (0042b) Beaded Shell (New York). Small bowl (sauce bowl) in cobalt blue glass. Decorated with gold paint. 1904, dimensions 2.5" H x 4.5" W x 4.5" D
4. (0042d) (0042b) Beaded Shell (New York). Small bowl (sauce bowl) in cobalt blue glass. Decorated with gold paint. 1904, dimensions 2.5" H x 4.5" W x 4.5" D
5. (0042e) (0042b) Beaded Shell (New York). Small bowl (sauce bowl) in cobalt blue glass. Decorated with gold paint. 1904, dimensions 2.5" H x 4.5" W x 4.5" D
6. (0042f) (0042b) Beaded Shell (New York). Small bowl (sauce bowl) in cobalt blue glass. Decorated with gold paint. 1904, dimensions 2.5" H x 4.5" W x 4.5" D
7. (0043a) Dugan & Northwood Nautilus or Argont Shell Jelly compote in light blue opalescent glass. 1900-1913, dimensions 5.5" H x 4.75" W x 3.5" D
8. (0043b) Dugan & Northwood Nautilus or Argont Shell Sauce dish in light blue opalescent glass. 1900-1913, dimensions 3" H x 5.25" W x 3.5" D
9. (0044a) Jeweled Heart (victor) spooner in light blue glass. 1904, dimensions 4" H x 3.75" W x 3.75" D
10. (0044b) Jeweled Heart creamer in light blue glass. Small pitcher. 1904, dimensions 5" H x 5.5" W x 3.75" D
11. (0045) No. 900 line (Adams Rib) fan vase in light pink glass. No date, dimensions 6.5" D x 5.5" W x 3.25" D
12. (0046a) Adams Rib (No. 900) teacup in blue glass. 1925, dimensions 2.5" H x 4.5" W x 3.5" D
13. (0046b) Adams Rib (No. 900) teacup in blue glass. 1925, dimensions 2.5" H x 4.5" W x 3.5" D
14. (0046c) Adams Rib (No. 900) teacup in blue glass. 1925, dimensions 2.5" H x 4.5" W x 3.5" D
15. (0046d) Adams Rib (No. 900) teacup in blue glass. 1925, dimensions 2.5" H x 4.5" W x 3.5" D
16. (0046e) Adams Rib (No. 900) teacup in blue glass. 1925, dimensions 2.5" H x 4.5" W x 3.5" D

17. (0046f) Adams Rib (No. 900) teacup in blue glass. 1925, dimensions 2.5" H x 4.5" W x 3.5" D
18. (0047a) Jeweled Heart Cruet in light blue glass. No date, dimensions 4.5" H x 4" W x 3.75" D
19. (0047b) Clear glass stopper that fits to cruet. No date, dimensions 2.5" H x 1.25" W x 1.25" D
20. (0048) Bon bon (candy dish) in satin blue glass with iridescent finish. No date, dimensions 3.75" H x 5.5" W x 5.5" D. Note, missing lid.
21. (0049) Green Button and Panels Rose bowl. 1899, dimensions 4.25" H x 4.5" W x 4.5" D
22. (0050) Wild bouquet sugar bowl. No date, dimensions 4.5" H x 5.5" W x 4.5" D
23. (0051) Blue glass compote in Nestor pattern. 1902, dimensions 4.5" H x 4.75" W x 4.75" D

**Box 5 Pieces (0074-0086)**

1. (0074) Candy dish (?) in light blue opalescent glass. Alaska pattern. Ruffled rim that slants inward. No date, dimensions 4" H x 4.5" W x 4.5" D
2. (0075) Sauce bowl in light blue opalescent glass. Alaska pattern. Squiggle design along rim. No date, dimensions 3.5" H x 4" W x 4" D
3. (0076) Candy dish (?) in white/flint opalescent glass. Alaska pattern. Tall ruffled rim. Dugan/ Button Panels. No date, dimensions 4.5" H x 5" W x 5" D
4. (0077) Square lid in white/flint opalescent glass. Alaska pattern. Fits onto a piece of the Alaska table set. No date, dimensions 2.74" H x 4" W x 4" D
5. (0078) Small pitcher in blue opalescent glass. Part of Klondyke table set. No date, dimensions 5" H x 5.75" W x 4" D
6. (0079) Small vase in blue opalescent glass. Possibly Klondyke pattern. Horizontal bands, floral decorations, rim imprinted with shell pattern, base imprinted with leaf motif. No date, dimensions 6" H x 3" W x 3" D
7. (0080) Corn vase in blue opalescent glass. No date, dimensions 8" H x 3" W x 2.5" D
8. (0081) Adams Rib (No. 900) footed dish. Foot and body in gray glass. Rim in opaque black glass. 1925, dimensions 3.5" H x 6" W x 6" D
9. (0082) Blue opalescent Daisy and Fern tumbler. No date, dimensions 3.75" H x 3" W x 3" D
10. (0083) Tumbler in blue glass with enamel decorations. Floral motifs in white enamel. No date, dimensions 4" H x 3" W x 3" D
11. (0084) Tumbler in blue glass with enamel decorations. A horizontal band of light blue enamel is outlined in orange enamel and decorated with yellow enamel dots. White enamel dots forming scrolls appear above and below the band. No date, dimensions 4" H x 3" W x 3" D
12. (0085) Tall, skinny pitcher in blue glass with satin finish. Body molded with vertical indentations. No date, dimensions 8" H x 2.5" W x 2.5" D
13. (0086) Cobalt blue glass vase decorated with amber frit. Possibly a part of Dugan's iridescent line. White, yellow, light blue, and metallic decorations. No date, dimensions 6.25" H x 3.75" W x 3.75" D

**Box 6 Pieces (0087-0097)**

1. (0087) Cobalt blue enameled barber bottle. Enamel decorations in white and orange floral motifs. Does not have stopper/spout. No date, dimensions 8.25" H x 3.5" W x 3.5" D

2. (0088) Amethyst enameled barber bottle. Enamel decorations in white, orange, and yellow floral motifs. Remnants of gold paint. Ceramic spout. No date, dimensions 8" H x 3.5" W x 3.5" D. Note, very similar to 0089 design.
3. (0089) Green enameled barber bottle. Enamel decorations in white, yellow, and orange floral motifs. Ceramic spout wrapped in string. No date, dimensions 7.75" H x 3.75" W x 3.75" D. Note, very similar to 0088 design.
4. (0090) Dugan enameled lemonade pitcher. Clear glass pitcher with enameled floral designs in pink, blue, green, and yellow. Body flares out near the base. Tall spout. No date, dimensions 11.5" H x 7" W x 7" D. Note, Label on underside of pitcher that reads "C. Buterbaugh/ 1526 Woodland Rd./ Indiana, PA 724-349-2337.
5. (0091) Dugan enameled wine decanter in blue glass. Body enameled with yellow, white, green, orange, and periwinkle floral motifs. Remnants of gold leaf. 1907, dimensions 9.25" H x 6.5" W x 6.5" D. Note, Label on underside of pitcher that reads "C. Buterbaugh/ 1526 Woodland Rd./ Indiana, PA 724-349-2338
6. (0092) Large bottle stopper in blue glass. Poor condition. No date, dimensions 4" H x 1.5" W x 1.5" D. Possibly paired with 0091 (decanter), however they don't fit well together.
7. (0093) Woodpecker wall vase in opaque black glass. Conical shape impressed with the design of a woodpecker. Hole in back for mounting. No date, dimensions 8.15" H x 2" W x 1.5" D
8. (0094) Opaque black glass stand/base. Short, circular. No date, dimensions 1.25" H x 4.75" W x 4.75" D. Note, chip on rim.
9. (0095) Diamond Adams Rib sandwich serving platter in pink glass. 1925, dimensions 5.25" H x 10.75" W x 10.75" D
10. (0096) Diamond. Green glass handled relish dish with three compartments. 1927, dimensions 3.5" H x 10.75" W x 10.75" D. Note, design for this piece was registered by H. Wallace Thomas in 1927.
11. (0097) Serving bowl in clear glass. Underside of bowl is painted/ enameled with an overall ombre from green to yellow. The edges of the bowl are decorated with two black bands which contain three flowers in orange and green. No date, dimensions 2.25" H x 10.25" W x 10.25" D

**Box 7 Pieces (0098-0110)**

1. (0098) Signed Northwood Tree Trunk vase in green carnival glass. 1905, dimensions 9.5" H x 3.5" W x 3.5" D
2. (0099) Signed Northwood Stippled Rays compote in green carnival glass. 1909, dimensions 5" H x 6" W x 6" D
3. (0100) Dugan fan handled nappy in peach opalescent carnival glass. 1907, dimensions 3.75" H x 7.5" W x 5.25" D
4. (0101) Signed Northwood flute handled nappy in marigold carnival glass. 1908, dimensions 2.5" H x 5.75" W x 4.75" D
5. (0102) Small bowl in Dugan Fishscale & beads design. Marigold carnival glass. No date, dimensions 2.5" H x 6" W x 6" D
6. (0103) Dugan stippled flower design on bowl in peach opalescent carnival glass. NO date, dimensions 2.5" H x 7" W x 7" D
7. (0104) Bowl in Dugan Single Flower design. Peach opalescent carnival glass. 1909, dimensions 3" H x 9" W x 9" D

8. (0105) Dugan/ Caroline & Smooth Rays bowl in peach opalescent carnival glass. 1910, dimensions 3.25" H x 8" W x 8" D
9. (0106) Dugan/ PO Flowers & Frames bowl in peach opalescent carnival glass. 1910, dimensions 4" H x 8" W x 8.25" D
10. (0107) Dugan Maple Leaf compote in marigold carnival glass. 1910, dimensions 3.25" H x 4.25" W x 4.25" D
11. (0108) Dugan Stork & Rushes punch cup in marigold carnival glass. 1914, dimensions 2.25" H x 3.75" W x 3" D
12. (0109a) Dugan Vintage Powder Jar in marigold carnival glass. Sides decorated with grape and leaf design. A lid fits on top of the jar. No date, dimensions 2.75" H x 3.75" W x 3.75" D
13. (0109b) Dugan Vintage Powder Jar in marigold carnival glass. Sides decorated with grape and leaf design. A lid fits on top of the jar. No date, dimensions 0.75" H x 4" W x 4" D
14. (0110a) Clear glass enameled tumbler. Decorated with white, blue, green, and red enamel in a floral motif. Remnants of gold paint on rim. No date, dimensions 4" H x 3" W x 3" D
15. (0110b) Clear glass enameled tumbler. Decorated with white, blue, green, and red enamel in a floral motif. Remnants of gold paint on rim. No date, dimensions 4" H x 3" W x 3" D
16. (0110c) Clear glass enameled tumbler. Decorated with white, blue, green, and red enamel in a floral motif. Remnants of gold paint on rim. No date, dimensions 4" H x 3" W x 3" D
17. (0110d) Clear glass enameled tumbler. Decorated with white, blue, green, and red enamel in a floral motif. Remnants of gold paint on rim. No date, dimensions 4" H x 3" W x 3" D

**Box 8 Pieces (0111-0119)**

1. (0111) Dugan Opal Open or Beaded Panels card receiver in peach opalescent carnival glass. No date, dimensions 3.5" H x 7.25" W x 5.25" D
2. (0112) Dugan Question Mark two handled compote in marigold carnival glass. 1910, dimensions 3.5" H x 7.25" W x 5.25" D
3. (0113) Dugan Raindrops & Keyhole bowl in peach opalescent carnival glass. 1910, dimensions 4.25" H x 8" W x 8" D
4. (0114) Dugan Raindrops & Keyhole bowl in peach opalescent carnival glass. 1910, dimensions 2.25" H x 6" W x 6" D
5. (0115) Dugan Twig vase in clear and marigold carnival glass. Tall and skinny. No date, dimensions 8.25" H x 2.5" w x 2.5" D
6. (0116) Dugan Honeycomb & Beads bowl in peach opalescent carnival glass. 1909, dimensions 2" H x 6.75" W x 6.75" D
7. (0117) Dugan Pony ruffled bowl in marigold carnival glass. No date, dimensions 2.75" H x 8.75" W x 8.75" D
8. (0118) Diamond Cosmos Variant bowl in marigold carnival glass. Large bowl. 1922, dimensions 2.25" H x 9" W x "9" D
9. (0119) Flower frog in marigold. No date, dimensions 1.5" H x 3.5" W x 3.5" D. Note, May be peach or marigold color glass. No carnival patina.

**Box 9 Pieces (0120-0126)**

1. (0120) Dugan Target short vase in white carnival glass. 1909, dimensions 5.75" H x 5.5" W x 5.5" D

2. (0121) Dugan Question Mark two handled nappy in white carnival glass. 1912, dimensions 3.5" H x 7.25" W x 5" D
3. (0122) Northwood Stretch Carnival Hat in white carnival glass. Possibly a vase. No date, dimensions 3.5" H x 5.75" W x 5.75" D
4. (0123) Dugan Persian Garden small plate in white carnival glass. 1910, dimensions 1" H x 7" W x 7" D
5. (0124) Dugan Grapevine Lattice small plate in white carnival glass. 1912, dimensions 1.5" H x 7" W x 7" D
6. (0125) Dugan Constellation on Seafoam compote in white carnival glass. 1912, dimensions 5" H x 5.75" W x 5.5" D
7. (0126) Dugan Grape Delight rose bowl in white (light purple?) carnival glass. 1913, dimensions 4" H x 5.25" W x 5.25" D

**Box 10 Pieces (0127-0145)**

1. (0127) Northwood Chrysanthemum Sprig/or Pagoda, pale green, individual sauce or berry bowl. 1989, dimensions 2.8" H x 3.5" W x 5.2" D. Note, also known as Louis XV berry bowl.
2. (0128) Northwood button paneled rose bowl, canary opalescent ice green glass. 1989, dimensions 4" x 4" W x 4" D
3. (0129) Northwood Apple Blossom, white and light blue spattered green rose bowl. 1901, dimensions 3.8" H x 4.8" W x 4.8" D. Note, similar to 0128 rose bowl.
4. (0130) Opalescent ice green fruit bowl. 1900, dimensions 3" H x 5.5" W x 7" D.
5. (0131) Northwood Fluted Scrolls Vaseline Glass Cruet with painted daisies. 1896, dimensions 6.3" H x 3.5" W x 2.5" D
6. (0132) Dugan decorated tumbler, translucent with green and gold bands around top. 1901, dimensions .4" H x 2.3" W x 2.8" D
7. (0133) Dugan olive green tumbler with painted lilies. 1901, dimensions 4" H x 2.5" W x 2.8" D. Note, 0133, 0134, 0135 are all of the same set.
8. (0134) Dugan olive green tumbler with painted lilies. 1901, dimensions 4" H x 2.5" W x 2.8" D. Note, 0133, 0134, 0135 are all of the same set.
9. (0135) Dugan olive green tumbler with painted lilies. 1901, dimensions 4" H x 2.5" W x 2.8" D. Note, 0133, 0134, 0135 are all of the same set.
10. (0136) Dugan white opalescent spiralex vase. 1907, dimensions 10.8" H x 2.4" w x 4.8" D. Note, may also be called a twig vase.
11. (0137) Green opalescent glass footed Klondyke pattern ruffled edged fruit bowl. 1898, dimensions 3.5" H x 6.5" x 7.3" D
12. (0138) Northwood canary opalescent twig vase. 1989, dimensions 4.7" H x 2.2" W x 2.3" D
13. (0139) Dugan white opalescent glass swan. 1905, dimensions 4.2" H x 4.5" W x 3" D
14. (0140) Dugan ice green opalescent swan. 1909, dimensions 4.2" H x 4.5" W x 3" D
15. (0141) Northwood Hilltop Vines, ice green opalescent. 1906, dimensions 5" H x 4" W x 5" D
16. (0142) Northwood Vaseline Opal Open, dome footed, bead paneled, white opalescent rosebowl. 1909, dimensions 5.8" H x 2.9" W x 3.5" D
17. (0143) Northwood Louis XV ivory spooner or sugar bowl with gold décor. 1898, dimensions 4.6" H x 3.5" W x 4" D

18. (0144) Northwood Louis XV ivory berry dish with gold décor. 1898, dimensions 2.5" H x 5" W x 3.7" D. Note, similar to 0127 berry bowl with some variation.
19. (0145) Dugan Diamond Spearhead, canary opalescent decorative toothpick holder. 1901, dimensions 2.5" H x 1.9" W x 2" D

**Box 11 Pieces (0146-0158)**

1. (0146) Dugan Nestor pattern light green/apple green toothpick holder. 1906, dimensions 2.5" H x 1.8" W x 2" D
2. (0147) Dugan Beaded Shell and Beaded Ovals in the Sand, light green/apple green creamer. 1906, dimensions 4.4" H x 5.8" W x 3.8" D
3. (0148) Dugan Beaded Shell and Beaded Ovals in the Sand, light green/apple green spooner or sugar bowl. 1906, dimensions 4.5" H x 3.7" W x 3.7" D
4. (0149) Dugan Beaded Shell and Beaded Ovals in the Sand, light green/apple green covered spooner or sugar bowl. 1906, dimensions 7.5" H x 4.3" W x 4" D. Note, Complete with Beaded Shell and Beaded Ovals in the Sand lid.
5. (0150) Dugan Beaded Shell and Beaded Ovals in the Sand, light green/apple green butterdish. 1906, dimensions 1.9" H x 6.8" W x 7" D
6. (0151) Dugan Venetian pattern green water pitcher. No date, dimensions 9.2" H x 5.5" W x 6.2" D
7. (0152) Northwood Intaglio pattern white opalescent tumbler. 1898, dimensions 4" H x 2.2" W x 2.9" D
8. (0153) Northwood Jackson pattern, ice canary opalescent card receiver. 1890, dimensions 3" H x 8" W x 7" D
9. (0154) Dugan Keyhole pattern opalescent glass, dome base with goofus painted on white. 1905, dimensions 3.5" H x 9" W x 8.2" D
10. (0155) Dugan Swan dish opalescent green. 1930, dimensions 3.5" H x 7" W x 7" D
11. (0156) Northwood Jefferson, ruffles and rings pattern, cobalt blue, candy ribbon edge, three footed bowl. 1900, dimensions 3.1" H x 8.8" W x 8.8" D. Note, 0156-0158 contain similar pattern of the Northwood Jefferson's ruffles and rings.
12. (0157) Northwood Jefferson, ruffles and rings pattern, white opalescent with daiy band, three footed bowl. 1900, dimensions 3" H x 7" W x 8" D
13. (0158) Northwood Jefferson, ruffles and rings pattern, ice green opalescent, crimped edge, three footed bowl. 1900, dimensions 3.6" H x 7.8" W x 9" D

**Box 12 Pieces (0159-0174)**

1. (0159) Dugan Fanciful white Carnival glass big basketweave with ruffled edge bowl. 1912, dimensions 2" H x 9" W x 9" D. Note, 0159-0162 white carnival glass also called "Pearl."
2. (0160) Dugan Roundup, white Carnival glass big basketweave with ruffled edge bowl. 1912, dimensions 2" H x 8.4" W x 9" D
3. (0161) Dugan Six Pearls white Carnival glass with crimped edge. 1912, dimensions 2.8" H x 8.5" W x 8" D
4. (0162) Dugan Double Stem Rose white Carnival glass with crimped edge bowl. 1910, dimensions 3.2" H x 9.5" W x 9.5" D
5. (0163) Dugan Stippled Petal and Long Leaf, peach Carnival glass with ruffled edge bowl. 1911, dimensions 3.5" H x 9" W x 8.5" D

6. (0164) Dugan PO Ski Star & Compass peach Carnival glass with crimped edge bowl. 1910, dimensions 3.8" H x 8.5" W x 7.5" D
7. (0165) Dugan Leaf Rays peach Carnival glass nappie. 1912, dimensions 2.2" H x 6.8" W x 6" D
8. (0166) Dugan Daisy Dear marigold Carnival glass crimp edge bowl. 1912, dimensions 2.8" H x 7" W x 7" D
9. (0167) Northwood Grape & Cable marigold Carnival glass basketweave two handled card receiver. No date, dimensions 2" H x 6" W x 8" D
10. (0168) Dugan Fishscale & Beads marigold Carnival glass ruffled edge bowl. No date, dimensions 1.8" H x 6" W x 6.8" D
11. (0169) Beads marigold Carnival glass ruffled edge bowl. No date, dimensions 4" H x 2.5" W x 4.5" D
12. (0170) Dugan Hat Whimsey peach Carnival glass tumbler. No date, dimensions 2.8" H x 1.5" W x 3.5" D
13. (0171) Dugan Beaded Basket marigold Carnival glass. 1914, dimensions 5.2" H x 5.1" W x 4" D
14. (0172) Singed Northwood Beaded Cable peach opal Carnival glass three footed rosebowl. 1903, dimensions, 4" H x 4.5" W x 3.5" D
15. (0173) Dugan Pulled Loop marigold Carnival glass vase. 1912, dimensions 7" H x 3" W x 3.8" D
16. (0174) Dugan PO Honeycomb peach Carnival glass bowl. 1909, dimensions 4" H x 4" W x 2.3" D

**Box 13 Pieces (0175-0184)**

1. (0175) Northwood Greek Key amethyst iridescent basketweave ruffled edge bowl. 1911, dimensions 3" H x 8.5" W x 8.5" D
2. (0176) Dugan Windflower amethyst iridescent nappie. 1911, dimensions 3.5" H x 7.5" W x 6.5" D
3. (0177) Dugan Holly and Berry peach Carnival glass nappie. 1909, dimensions 3.2" H x 7.2" W x 6" D
4. (0178) Dugan Single Flower Framed and Smooth Ribs peach Carnival glass bowl. 1909, dimensions 2.2" H x 6.8" W x 7" D
5. (0179) Dugan Cherry peach Carnival glass crimped edge three footed bowl. 1910, dimensions 4.5" H x 9" W x 7.5" D
6. (0180) Dugan Vineyard or Grape and Leaf marigold tumbler. 1910, dimensions 4" H x 2.5" W x 2.6" D
7. (0181) Dugan Vineyard or Grape and Leaf marigold tumbler. 1910, dimensions 4" H x 2.5" W x 2.6" D
8. (0182) Dugan Vineyard or Grape and Leaf marigold tumbler. 1910, dimensions 4" H x 2.5" W x 2.6" D
9. (0183) Dugan Vineyard or Grape and Leaf marigold tumbler. 1910, dimensions 4" H x 2.5" W x 2.6" D
10. (0184) Dugan Vineyard or Grape and Leaf marigold water pitcher. 1910, dimensions 9.8" H x 7.5" W x 4.2" D

**Box 14 Pieces (0185-0192)**

1. (0185) Northwood Twig Bud clear vase. No date, dimensions 8" H x 2.2" W x 1.2" D
2. (0186) White opaque lamp base. 1907, dimensions 5" H x 3.8" W. Note, lamp base comes with white opaque lamp cover with same design.
3. (0187) Small white opaque lamp base. No date, dimensions 4" H x 3.5" W. Note, small lamp base comes with white opaque lamp cover with same design.
4. (0188) Dugan Crocodile Tears white opaque miniature oil lamp. 1904, dimensions 5.7" H x 4" W
5. (0189) Dugan Crocodile Tears ice green miniature oil lamp. 1904, dimensions 5.7" H x 4" W
6. (0190) Dugan Crocodile Tears ice blue miniature oil lamp. 1904, dimensions 5.7" H x 4" W. Note, ice blue cover comes with lamp as separate piece.
7. (0191) Dugan Crocodile Tears dark purple miniature oil lamp. 1904, dimensions 5.7" H x 4" W
8. (0192) Dugan dark purple decorated night lamp. 1907, dimensions 62" H x 4.7" W. Note, 5 clear glass flutes for the lamps accompanied items within this box.

**Box 15 Shards (Box 15A-15F) (Note, the smaller boxes contain shards of glass sorted by color. Boxes are labeled A-F and one bag of green shards.)**

1. (Box 15A) Contains 35 shards: 28 ice blue, 3 opaque blue, and 4 celeste blue. Detailed description: two pieces of swan bowl (ice and celeste blue); shard from corn vase, two Daisy and Fern shards, two Alaska shard, one Spanish Lace shard (opaque blue); two pagoda shards (opaque blue); two Klondyke shards, one Hobnail shard (opaque blue); one Jeweled Heart shard, three foot and stem shards, and two cruet toppers.
2. (Box 15B) Contains 21 shards: 1 opaque green, 8 ice green, 2 dark green, and 10 emerald green. Detailed description: open O shard (opaque green); Klondyke shard and foot stem (dark green); two Jeweled Heart shards, two toppers, and one handle (ice green); two Seagull bowl shards and two Swan bowl shards (emerald green).
3. (Box 15C) Contains 16 shards: 5 ruby opalescent, 3 marigold opalescent, 6 peach opalescent, 1 pink, 1 amethyst iridescent. Detailed description: two Daisy/Fern shards and one Chrysanthemum Swirl shard (ruby); Seagull bowl shard and topper (marigold); Flowers Frogs shard, two Three Fruits shards, and basket handle (peach); amethyst S-repeat shard (amethyst).
4. (Box 15D) Contains 30 shards: 6 clear, 7 white, 9 white opaque, 4 yellow opalescent, and 4 ice yellow. Detailed description: two topper shards and one Klondyke shard (clear); Klondyke shard, one Daisy/Fern shard, one Chrysanthemum shard (white); two topper shards (white opaque); Twig Vase shard, one Speckled shard, and one handle (yellow opalescent); two Klondyke shards (ice yellow).
5. (Box 15E) Contains 10 shards, all cobalt blue. Detailed description: four Klondyke shards, one topper shards, one handle, one beaded base shard, and one Speckled shard.
6. (Box 15F) Contains 9 shards: 3 black, 1 amethyst iridescent, and 5 dark amethyst. Detailed description: one Three Fruits shard (black); Fountain Water shard (amethyst iridescent); S-repeat shard, topper shard, one handle, foot stem shard, and Swan bowl shard (dark amethyst).